

Company Southern Triangle Oil Co.
 Address Alum Bridge, West Va.
 Farm N. B. Cox "E"
 Tract _____ Acres 78 Lease No. _____
 Well (Farm) No. One Serial No. _____
 Elevation (Spirit Level) 1173
 Quadrangle Vadis NC
 County Doddridge District Greenbrier
 Engineer W. Steel Jr.
 Engineer's Registration No. 1227
 File No. _____ Drawing No. _____
 Date June 1962 Scale 1" = 300' 495'

STATE OF WEST VIRGINIA
 DEPARTMENT OF MINES
 OIL AND GAS DIVISION
 CHARLESTON

WELL LOCATION MAP
 FILE NO. Dod-819
DRILLING CANCELED

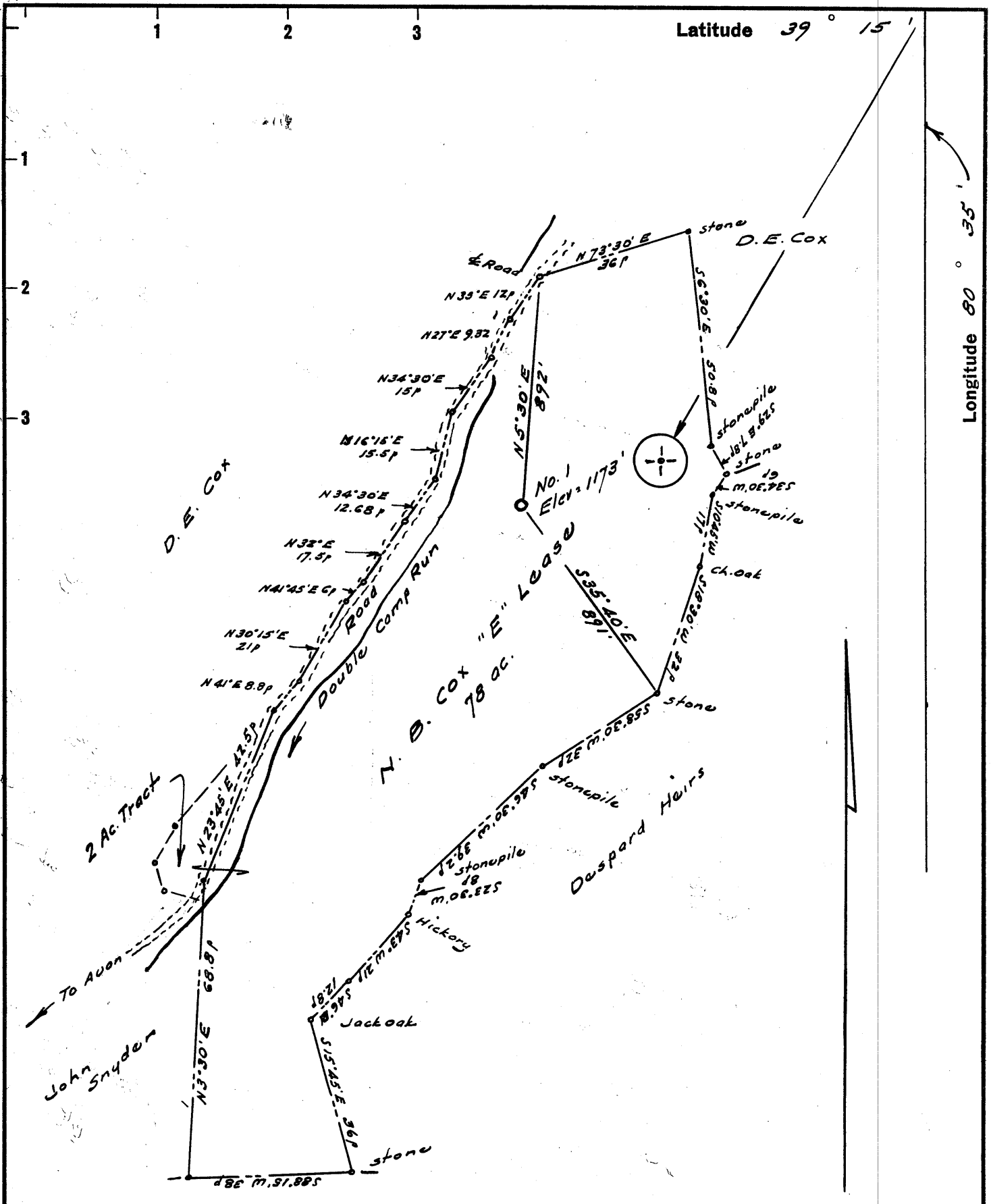
+ Denotes location of well on United States Topographic Maps, scale 1 to 62,500, latitude and longitude lines being represented by border lines as shown.

- Denotes one inch spaces on border line of original tracing.

DEC 1 1975

Latitude 39° 15'

Longitude 80° 35'



- New Location
- Drill Deeper
- Abandonment

S. B. & E. Cox.

Company Southern Triangle Oil Co.
 Address Alum Bridge, West Va.
 Farm N. B. Cox "E"
 Tract _____ Acres 78 Lease No. _____
 Well (Farm) No. One Serial No. _____
 Elevation (Spirit Level) 1173
 Quadrangle Vadis NC
 County Doddridge District Greenbrier
 Engineer W. B. [Signature]
 Engineer's Registration No. 1227
 File No. _____ Drawing No. _____
 Date June 1962 Scale 1" = 300' 495'

STATE OF WEST VIRGINIA
 DEPARTMENT OF MINES
 OIL AND GAS DIVISION
 CHARLESTON

WELL LOCATION MAP

FILE NO. Dod-819

+ Denotes location of well on United States Topographic Maps, scale 1 to 62,500, latitude and longitude lines being represented by border lines as shown.

- Denotes one inch spaces on border line of original tracing.