

Company C.N.G. TRANSMISSION CORP.

Address CLARKSBURG, W. VA.

Farm J.W. SMITH

Tract \_\_\_\_\_ Acres 4862 Lease No. 41979

Well (Farm) No. \_\_\_\_\_ Serial No. 10456

Elevation (Spirit Level) 1092'

Quadrangle OXFORD 7 1/2'

County DODDRIDGE District WEST UNION

Engineer Jackson M. Jarvis

Engineer's Registration No. 2397

File No. \_\_\_\_\_ Drawing No. \_\_\_\_\_

Date 10-31-62 Scale 1" = 80 POLES

STATE OF WEST VIRGINIA  
 DEPARTMENT OF MINES  
 OIL AND GAS DIVISION  
 CHARLESTON

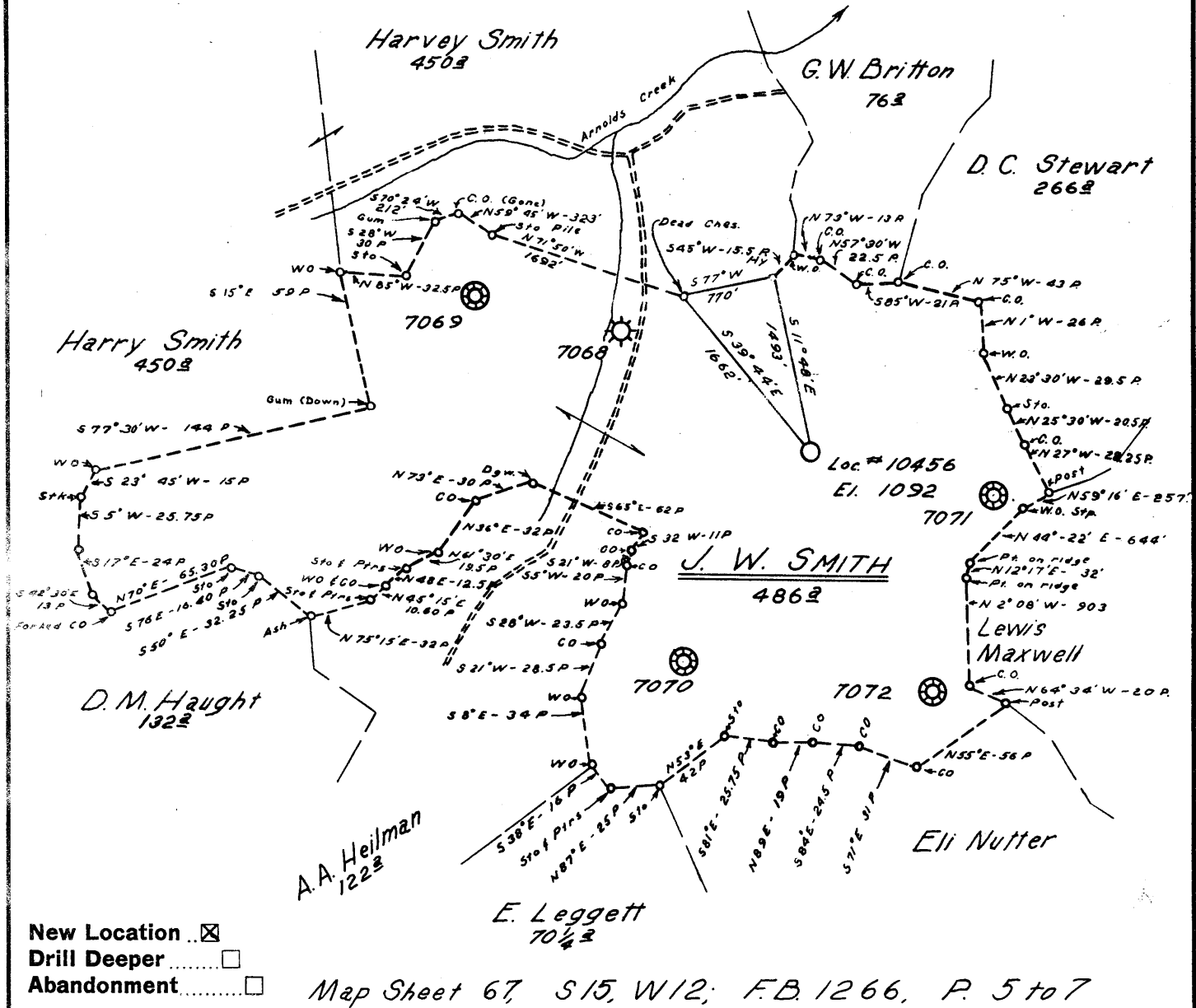
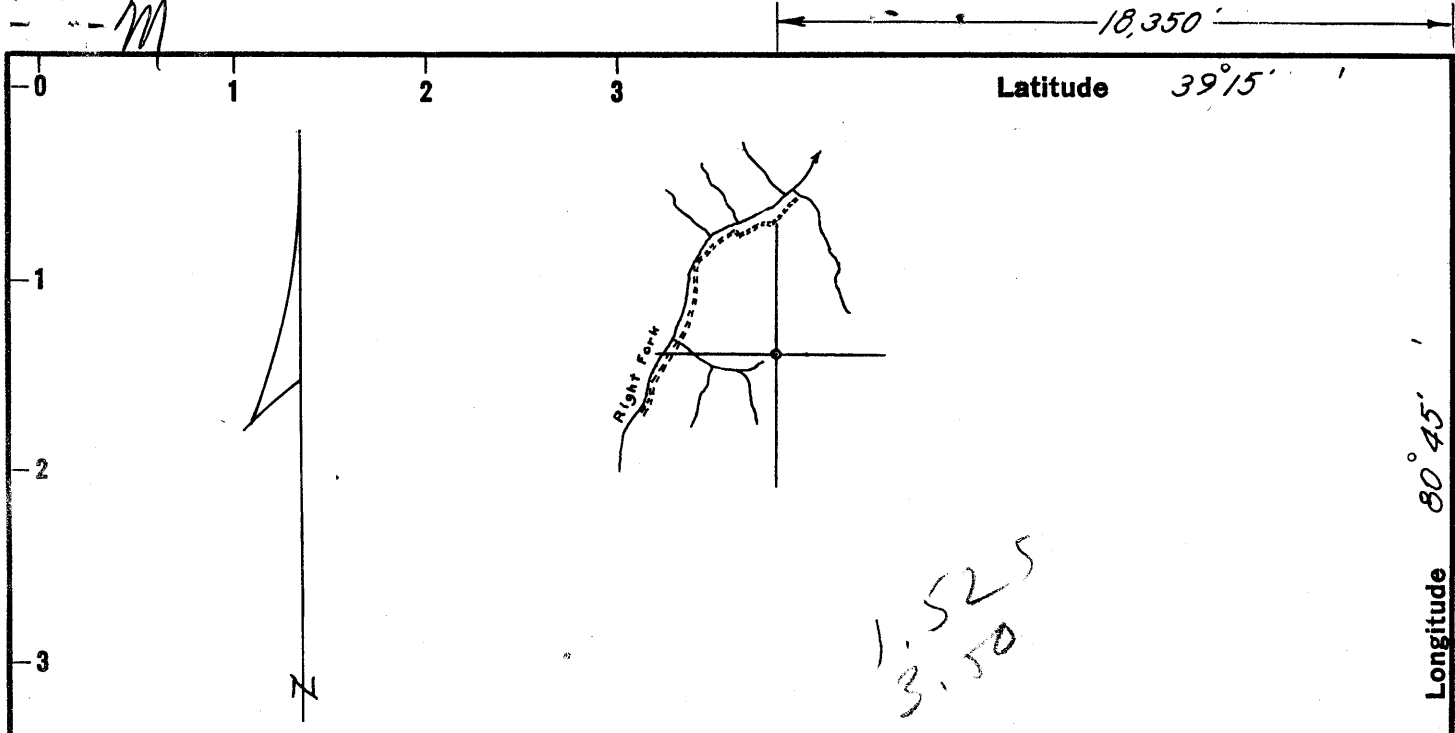
WELL LOCATION MAP  
 FILE NO. 47 017 00909 W

+ Denotes location of well on United States Topographic Maps, scale 1 to 24000 latitude and longitude lines being represented by border lines as shown.

- Denotes one inch spaces on border line of original tracing.

1968

Dodd 0909 W



Company HOPE NATURAL GAS Co.  
 Address CLARKSBURG, W. VA.  
 Farm J. W. SMITH  
 Tract \_\_\_\_\_ Acres 486± Lease No. 41979  
 Well (Farm) No. \_\_\_\_\_ Serial No. 10456  
 Elevation (Spirit Level) 1092'  
 Quadrangle HOLBROOK (N.E.)  
 County DODDRIDGE District WEST UNION  
 Engineer Jackson M. Jarvis  
 Engineer's Registration No. 2397  
 File No. \_\_\_\_\_ Drawing No. \_\_\_\_\_  
 Date 10-31-62 Scale 1" = 80 POLES

STATE OF WEST VIRGINIA  
 DEPARTMENT OF MINES  
 OIL AND GAS DIVISION  
 CHARLESTON

**WELL LOCATION MAP**  
 FILE NO. DOD-909

+ Denotes location of well on United States Topographic Maps, scale 1 to 62,500, latitude and longitude lines being represented by border lines as shown.

- Denotes one inch spaces on border line of original tracing.

NR-35

05-Aug-98  
API # 47- 17-00909 W

State of West Virginia  
Division of Environmental Protection  
Section of Oil and Gas

Well Operator's Report of Well Work

Farm name: HASSLEY HARDWOOD LUMBER Operator Well No.: CNGT 10456

LOCATION: Elevation: 1,092.00 Quadrangle: OXFORD

District: WEST UNION County: DODDRIDGE  
Latitude: 7600 Feet South of 39 Deg. 15Min. 0 Sec.  
Longitude 6800 Feet West of 80 Deg. 47 Min. 30 Sec.

Company: CNG TRANSMISSION CORP.

445 W. MAIN ST., P.O. BOX 2450  
CLARKSBURG, WV 26302-2450

Agent: JAMES D. BLASINGAME

Inspector: MIKE UNDERWOOD  
Permit Issued: 08/05/98  
Well work Commenced: 09/15/98  
Well work Completed: 09/24/98  
Verbal Plugging \_\_\_\_\_  
Permission granted on: \_\_\_\_\_  
Rotary Cable Rig \_\_\_\_\_  
Total Depth (feet) \_\_\_\_\_  
Fresh water depths (ft) \_\_\_\_\_  
Salt water depths (ft) \_\_\_\_\_  
Is coal being mined in area (Y/N)? \_\_\_\_\_  
Coal Depths (ft): \_\_\_\_\_

Casing & Tubing Size	Used in Drilling	Left in Well	Cement Fill Up Cu. Ft.

OPEN FLOW DATA

Producing formation Maxton SALT SAND Pay zone depth (ft) 1664-1678(14)  
Gas: Initial open flow \_\_\_\_\_ MCF/d Oil: Initial open flow \_\_\_\_\_ Bbl/d  
Final open flow 94 MCF/d Final open flow \_\_\_\_\_ Bbl/d  
Time of open flow between initial and final tests 4 Hours  
Static rock Pressure \*420 psig (surface pressure) after 12 Hours  
\*Commingle with existing production  
Second producing formation \_\_\_\_\_ Pay zone depth (ft) \_\_\_\_\_  
Gas: Initial open flow \_\_\_\_\_ MCF/d Oil: Initial open flow \_\_\_\_\_ Bbl/d  
Final open flow \_\_\_\_\_ MCF/d Final open flow \_\_\_\_\_ Bbl/d  
Time of open flow between initial and final tests \_\_\_\_\_ Hours  
Static rock Pressure \_\_\_\_\_ psig (surface pressure) after \_\_\_\_\_ Hours

NOTE: ON BACK OF THIS FORM PUT THE FOLLOWING: 1). DETAILS OF PERFORATED INTERVALS, FRACTURING OR STIMULATING, PHYSICAL CHANGE, ETC. 2). THE WELL LOG WHICH IS A SYSTEMATIC DETAILED GEOLOGICAL RECORD OF ALL FORMATIONS, INCLUDING COAL ENCOUNTERED BY THE WELLBORE.

For: [Signature] CNG TRANSMISSION CORP.  
By: Senior Staff Engineer  
Date: 10-05-98

OCT 26 1998

0000 0909 W

CNGT WEWV10456

~~08/14/98~~ PREPARING LOCATION FOR WORKOVER.

09/15/98 MEEKS WIRELINE RAN CBL. TOC - 1350'

09/16/98 MEEKS PERFORATED AND BJ FRACED AS FOLLOWS:

MAXTON, 1664-1678, 14 HOLES, B.D. 2300#, AVG RATE 8.3 BPM, AVG  
PRESS 2623#, 254 BBLS, TOT SAND 14,200#, ISIP 1400#

SALT SAND, 1598-1610', B.D. 3200#, AVG RATE 1.5 BPM, AVG PRESSURE  
3178#, 75 BBLS, ISIP 1900# COULD NOT GET SALT SAND FRACED, ONLY  
X-LINK PAD IN FORMATION.

09/24/98 SICP = 420#. DRILLED OUT BRIDGE PLUG. TD WELL AT 1960'. GAS TEST  
84 MCFD.

09/25/98 T.B.I.L.



STATE OF WEST VIRGINIA  
DEPARTMENT OF MINES  
OIL AND GAS DIVISION 4

Rotary   
Spudder   
Cable Tools   
Storage

Quadrangle HOLBROOK

Permit No. DOD-909

WELL RECORD

Oil or Gas Well Gas  (KIND)

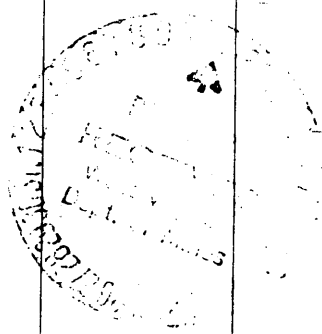
Company Hope Natural Gas Company  
Address Clarksburg, W. Va.  
Farm J. W. Smith Acres 486  
Location (waters) \_\_\_\_\_  
Well No. 10456 Elev. 1092  
District West Union County Doddridge  
The surface of tract is owned in fee by \_\_\_\_\_  
Address \_\_\_\_\_  
Mineral rights are owned by \_\_\_\_\_  
Address \_\_\_\_\_  
Drilling commenced 5-28-63  
Drilling completed 7-8-63  
Date Shot \_\_\_\_\_ From \_\_\_\_\_ To \_\_\_\_\_  
With \_\_\_\_\_  
Open Flow \_\_\_\_\_ /10ths Water in \_\_\_\_\_ Inch  
\_\_\_\_\_ /10ths Merc. in \_\_\_\_\_ Inch  
Volume 175 M Cu. Ft.  
Rock Pressure 24 hours lbs. 300# hrs.  
Oil None bbls., 1st 24 hrs.  
WELL ACIDIZED No  
WELL FRACTURED 7-1-63

Casing and Tubing	Used in Drilling	Left in Well	Packers
Size			Kind of Packer _____
16			
13			
10	336	336	Size of _____
8 1/4	1056	1056	
6 3/4			Depth set _____
5 3/16			
<del>XX 4 1/2"</del>	2018	2018	Perf. top _____
2			Perf. bottom _____
Liners Used			Perf. top _____
			Perf. bottom _____

CASING CEMENTED \_\_\_\_\_ SIZE \_\_\_\_\_ No. Ft. \_\_\_\_\_ Date \_\_\_\_\_  
4 1/2" casing cemented with 150 bags  
COAL WAS ENCOUNTERED AT None FEET \_\_\_\_\_ INCHES \_\_\_\_\_  
FEET \_\_\_\_\_ INCHES \_\_\_\_\_ FEET \_\_\_\_\_ INCHES \_\_\_\_\_  
FEET \_\_\_\_\_ INCHES \_\_\_\_\_ FEET \_\_\_\_\_ INCHES \_\_\_\_\_

RESULT AFTER TREATMENT 2,768 M ✓  
ROCK PRESSURE AFTER TREATMENT 14 days 280#  
Fresh Water See log Feet \_\_\_\_\_ Salt Water \_\_\_\_\_ Feet \_\_\_\_\_

Formation	Color	Hard or Soft	Top	Bottom	Oil, Gas or Water	Depth	Remarks
Clay			0	8			
Sand			8	29			
Red Rock			29	55			
Slate (Brown)			55	82			
Red Rock			82	96			
Slate & Shells			96	114			
Sand			114	135			
Slate & Shells			135	150			
Sand			150	185			
Red Rock			185	208			
Slate & Shells			208	244			
Red Rock			244	303			
Slate & Shells			303	328			
Sand			328	375			
Lime			375	408			
Red Rock			408	418			
Lime			418	460			
Slate & Shells			460	480			
Lime			480	536			
Sand			536	565			
Slate & Shells			565	585			
Lime			585	605			
Red Rock			605	643			
Lime			643	675			
Red Rock			675	680			
Slate & Shells			680	735			
Lime			735	760			
Sand			760	785			
Slate & Shells			785	825			



Formation	Color	Hard or Soft	Top 4	Bottom	Oil, Gas or Water	Depth Found	Remarks
Red Rock			825	865			
Slate & Shells			865	888			
Black Slate			888	903			
Slate & Shells			903	917			
Sand			917	950			
Slate			950	953			
Sand			953	975	Gas	970	Show
Slate & Shells			975	1012			
Slate & Shells			1012	1056			
Lime			1056	1060			
GAS SAND			1060	1198			
Lime			1198	1212			
Slate & Shells			1212	1245			
FIRST SALT			1245	1292			
Slate & Shells			1292	1310			
Sand			1310	1340			
Slate (Black)			1340	1397			
Sand (Broken)			1397	1429			
SECOND SALT			1429	1505			
Slate & Shells			1505	1560			
Lime (Gritty)			1560	1584			
THIRD SALT			1584	1609	Gas	1584-94'	
Slate Shells (Black)			1609	1632			
Lime			1632	1653			
MAXTON			1653	1735			
Slate			1735	1755			
LITTLE LIME			1755	1773			
PENCIL CAVE			1773	1775			
BIG LIME			1775	1867			
INJUN SAND			1867	1947	Gas	1908-28	
Slate & Shells			1947	2018			
TOTAL DEPTH			2018				

Date December 10, 1963, 19\_\_

APPROVED Hope Natural Gas Company, Owner

By Jack Bailey  
(Title)