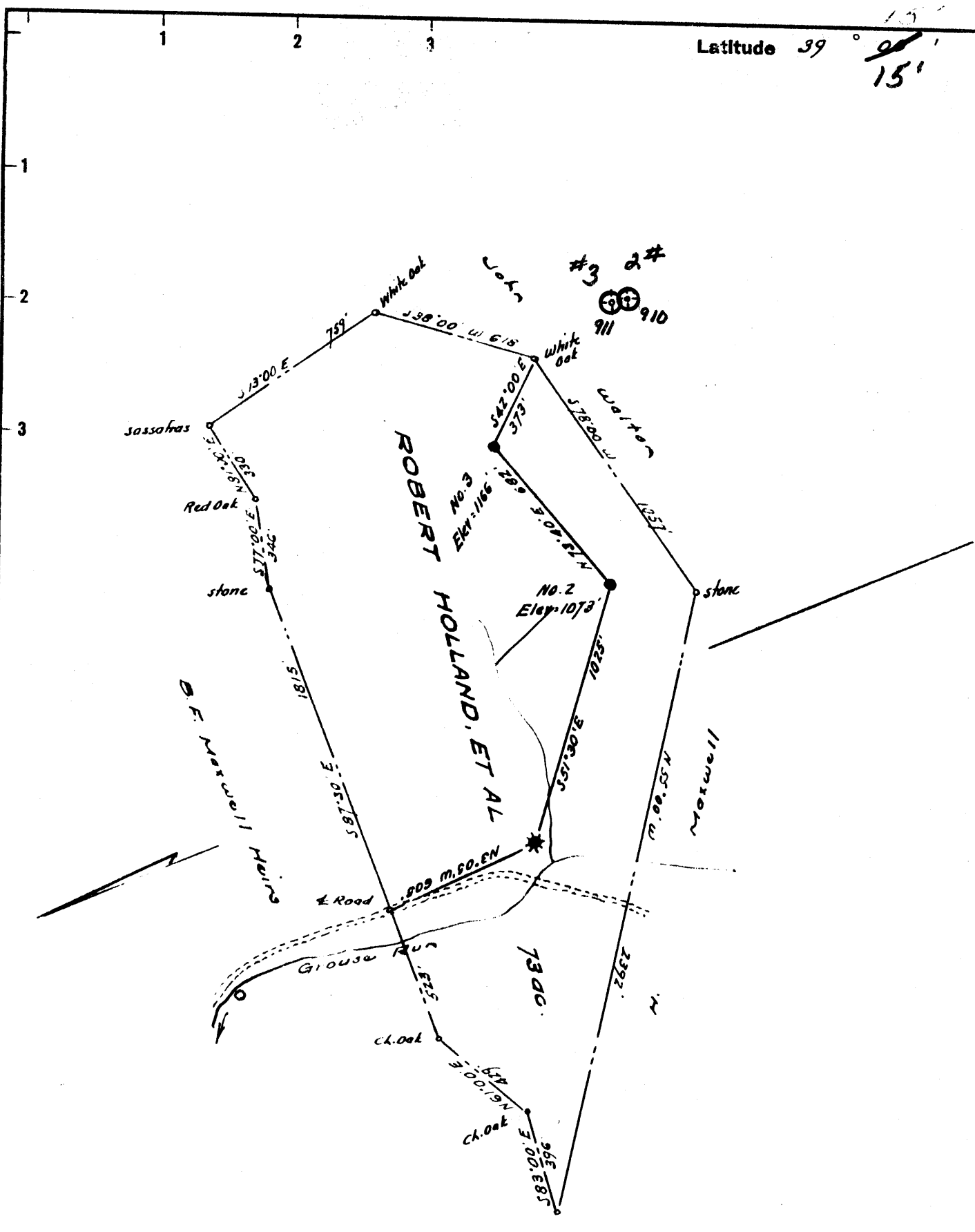


Latitude 39° <sup>15'</sup>

Longitude 80° 40'



New Location   
 Drill Deeper   
 Abandonment  issued 7/12/74

*Q. D. Puraley - d bo Puraley Picking & Co.*  
 Company **PRIOR OIL COMPANY**  
 Address *Box 514, Parkersburg, W. Va 25252*  
 Farm Robert Holland  
 Tract \_\_\_\_\_ Acres 73 Lease No. \_\_\_\_\_  
 Well (Farm) No. Two & Three Serial No. \_\_\_\_\_  
 Elevation (Spirit Level) No. 2 - 1073 No. 3 - 1166  
 Quadrangle Yadis NW  
 County Doddridge District New Milton  
 Engineer W. H. ...  
 Engineer's Registration No. 1227  
 File No. \_\_\_\_\_ Drawing No. \_\_\_\_\_  
 Date Dec 3, 1962 Scale 1" = 500'

STATE OF WEST VIRGINIA  
 DEPARTMENT OF MINES  
 OIL AND GAS DIVISION  
 CHARLESTON

**WELL LOCATION MAP**

FILE NO. Dod-910-#2-P  
Dod-911-#3-P

+ Denotes location of well on United States Topographic Maps, scale 1 to 62,500, latitude and longitude lines being represented by border lines as shown.

- Denotes one inch spaces on border line of original tracing.

**47-017**



STATE OF WEST VIRGINIA  
DEPARTMENT OF MINES  
OIL AND GAS DIVISION 5

Quadrangle Vadis

Permit No. DOD-910

WELL RECORD

Oil or Gas Well Oil  
(KIND)

Company Ferrell L. Prior  
Address 720 Union Trust Bldg., Parkersburg, W. Va.  
Farm Holland Acres 73  
Location (waters) \_\_\_\_\_  
Well No. Two Elev. 1075  
District New Milton County Doddridge  
The surface of tract is owned in fee by Robert Holland  
Address West Union, W. Va.  
Mineral rights are owned by Robert Holland  
Address West Union, W. Va.  
Drilling commenced 2-4-63  
Drilling completed 2-11-63  
Date Shot \_\_\_\_\_ From \_\_\_\_\_ To \_\_\_\_\_  
With \_\_\_\_\_  
Open Flow \_\_\_\_\_ /10ths Water in \_\_\_\_\_ Inch  
\_\_\_\_\_ /10ths Merc. in Not taken Inch  
Volume Not taken Cu. Ft.  
Rock Pressure Not taken lbs. \_\_\_\_\_ hrs.  
Oil Show bbls., 1st 24 hrs.  
WELL ACIDIZED 300 Gal.

Casing and Tubing Va.	Used in Drilling	Left in Well	Packers
Size			Kind of Packer
16			
13			
10			Size of
8 5/8	30'	30'	Depth set
6 3/4			
5 3/16			
X 4 1/2"		1970'	Perf. top 1929
2			Perf. bottom 1930
Liners Used			Perf. top
			Perf. bottom

CASING CEMENTED 4 1/2 SIZE 1970 No. Ft. 2-11-63 Date  
44 sks. cement (H.E.) - 6 sks. reg. cement -  
Dowell  
COAL WAS ENCOUNTERED AT None FEET \_\_\_\_\_ INCHES  
\_\_\_\_\_ FEET \_\_\_\_\_ INCHES FEET \_\_\_\_\_ INCHES  
\_\_\_\_\_ FEET \_\_\_\_\_ INCHES FEET \_\_\_\_\_ INCHES

WELL FRACTURED 600 Bbls. Wtr. 40,000# Sand  
Drilled with rotary circulating gel.

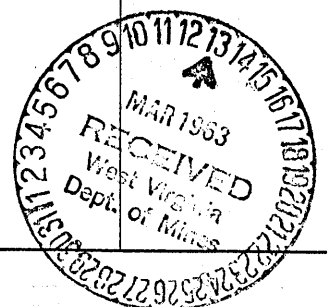
RESULT AFTER TREATMENT 50 Bbls. oil - 24hrs.

ROCK PRESSURE AFTER TREATMENT 645 # - 24 hrs.

Fresh Water \_\_\_\_\_ Feet \_\_\_\_\_ Salt Water \_\_\_\_\_ Feet \_\_\_\_\_

Formation	Color	Hard or Soft	Top	Bottom	Oil, Gas or Water	Depth	Remarks
Surface			0	18	Water-None recorded with Rotary		Drilled
Red rock			18	43			
Sand & shale			43	87			
Sand			87	119			
Shale			119	153			
Sand			153	181			
Shale			181	278			
Sand			278	365			
Sand & shale			365	612			
Sand			612	637			
Sand & shale			637	722			
Sand			722	745			
Sand & shale			745	862			
Shaley Shale			862	1149			
Sand			1149	1231			
Sand & shale			1231	1310			
Shaley sand			1310	1392			
Sand & shale			1392	1417			
Shaley X sand			1417	1452			
Sand			1452	1491			
Shaley sand			1491	1562			
Sand & shale			1562	1603			
Shale			1603	1685			
Shaley sand			1685	1749			
Sandy lime			1749	1765			
Sand & lime			1765	1806			
Lime			1806	1832			
Sand lime			1832	1879			
Sand			1879	1888	Oil		

(over)



Formation	Color	Hard or Soft	Top <sup>5</sup>	Bottom	Oil, Gas or Water	Depth Found	Remarks
Sand & lime			1888	1901			
Sand			1901	1935	Oil		
Shale			1935	1970	T.D.		

Date Mar 12, 1963  
 APPROVED Paul C. Co., Owner  
 By Joe W. Langhorne  
 (Title)