

New Location
 Drill Deeper
 Abandonment

Company Southern Triangle Oil Co.
 Address 104 Bank St., Weston, W. Va.
 Farm J. W. Gum
 Tract _____ Acres 260.868 Lease No. _____
 Well (Farm) No. Four Serial No. _____
 Elevation (Spirit Level) 1162
 Quadrangle Vadis WC
 County Doddridge District Cove
 Engineer W. H. H. H.
 Engineer's Registration No. 1227
 File No. _____ Drawing No. _____
 Date April 8, 1963 Scale 1" = 400' = 660'

STATE OF WEST VIRGINIA
 DEPARTMENT OF MINES
 OIL AND GAS DIVISION
 CHARLESTON

WELL LOCATION MAP
 FILE NO. Dad-956
 DRILLING CANCELED

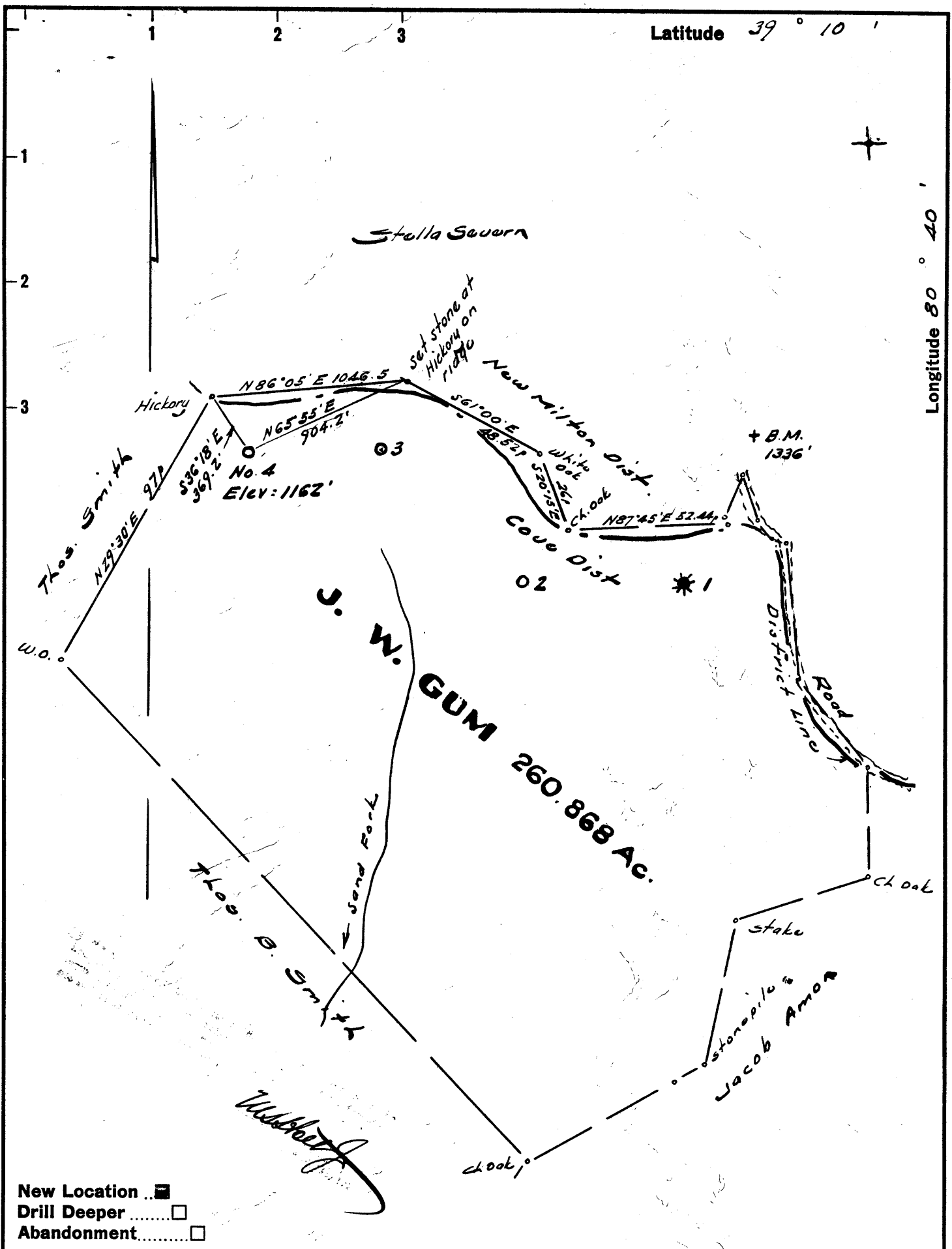
+ Denotes location of well on United States Topographic Maps, scale 1 to 62,500, latitude and longitude lines being represented by border lines as shown.

- Denotes one inch spaces on border line of original tracing.

SEP 11 1978

Latitude 39° 10'

Longitude 80° 40'



New Location
 Drill Deeper
 Abandonment

Company Southern Triangle Oil Co.
 Address 104 Bank St., Weston, W. Va.
 Farm J. W. Gum
 Tract _____ Acres 260.868 Lease No. _____
 Well (Farm) No. Four Serial No. _____
 Elevation (Spirit Level) 1162
 Quadrangle Yodis WC
 County Doddridge District Cove
 Engineer W. H. H. H.
 Engineer's Registration No. 1227
 File No. _____ Drawing No. _____
 Date April 8, 1963 Scale 1" = 400' = 660'

STATE OF WEST VIRGINIA
 DEPARTMENT OF MINES
 OIL AND GAS DIVISION
 CHARLESTON

WELL LOCATION MAP
 FILE NO. Dod-956
Cancelled

+ Denotes location of well on United States Topographic Maps, scale 1 to 62,500, latitude and longitude lines being represented by border lines as shown.

- Denotes one inch spaces on border line of original tracing.