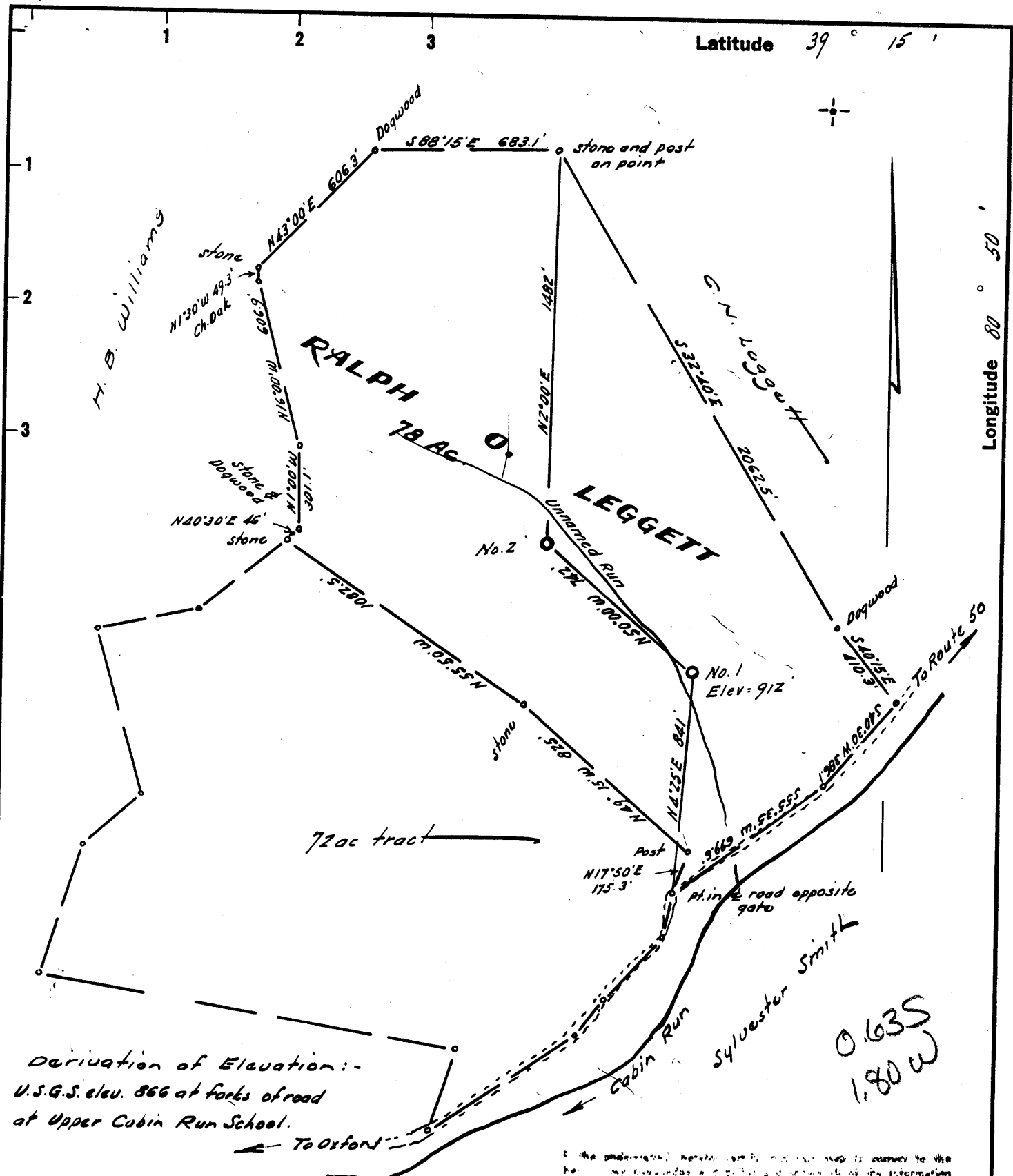


Latitude 39° 15'

Longitude 80° 50'



Derivation of Elevation:-
 U.S.G.S. elev. 866 at forks of road
 at Upper Cabin Run School.

The underground water and gas in this area is owned by the
 holder of the mineral and drilling operations in this information
 is based on the geologic and topographic maps and reports of the oil and
 gas section of the mining laws of West Virginia.

W. H. Smith
 R. P. S. No. 1227

New Location
 Drill Deeper
 Abandonment Error in Closure:- Less than 1/200

Company KEYSTONE GAS AND OIL CO.
 Address 111 S. Highland, Du Bois, Penna.
 Farm Ralph O. Leggett
 Tract _____ Acres 78 ac Lease No. _____
 Well (Farm) No. One Serial No. _____
 Elevation (Spirit Level) 912
 Quadrangle Holbrook NC
 County Doddridge District Central
 Engineer W. H. Smith
 Engineer's Registration No. 1227
 File No. _____ Drawing No. _____
 Date May 25, 1963 Scale 1" = 500'

STATE OF WEST VIRGINIA
 DEPARTMENT OF MINES
 OIL AND GAS DIVISION
 CHARLESTON

WELL LOCATION MAP
 FILE NO. Dod - 991

+ Denotes location of well on United States
 Topographic Maps, scale 1 to 62,500, lat-
 itude and longitude lines being represented
 by border lines as shown.

- Denotes one inch spaces on border line
 of original tracing.