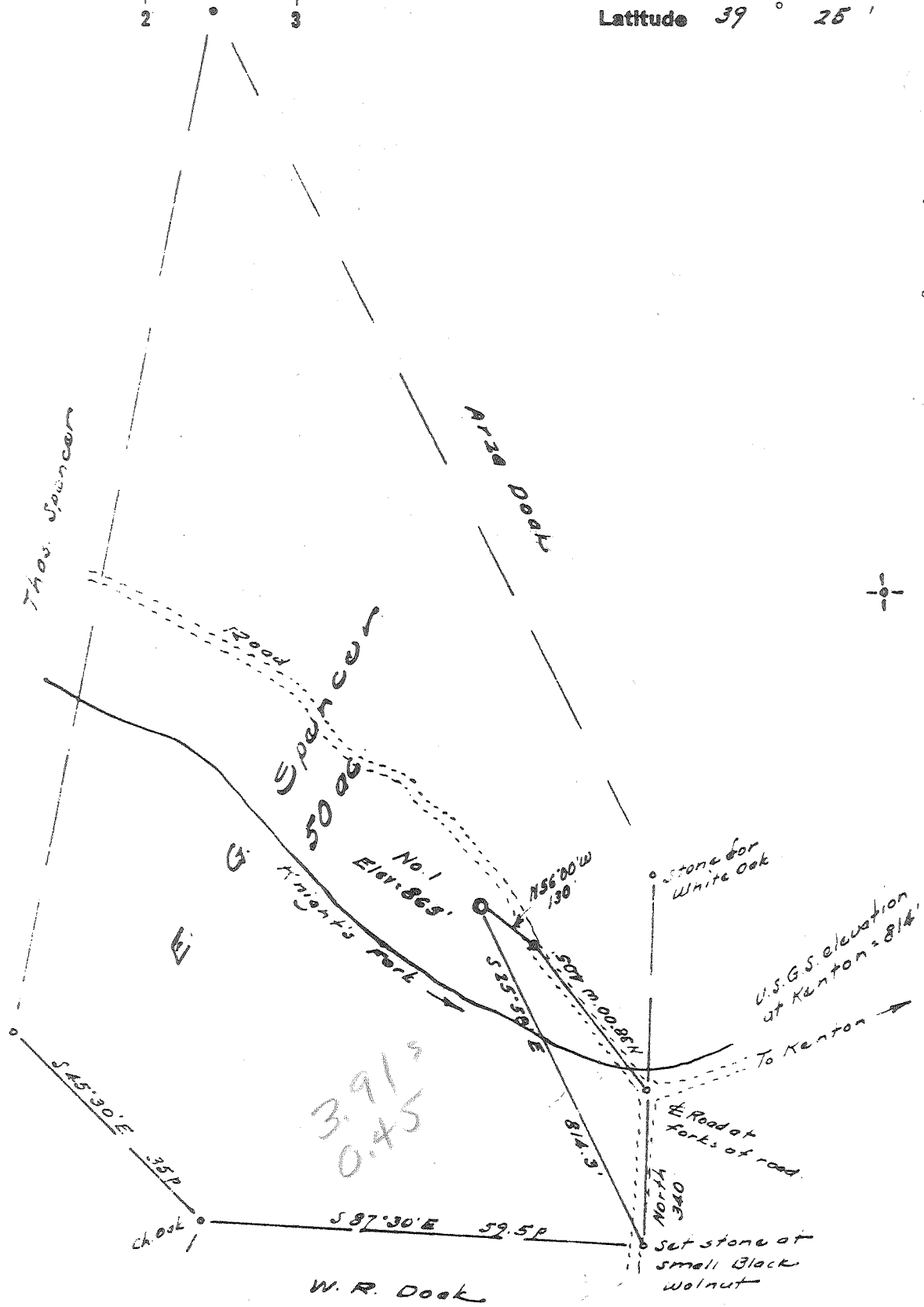


Latitude 39° 25'

Longitude 80° 45'



I, the undersigned, hereby certify that this map is drawn to the best of my knowledge and belief and in accordance with the provisions required by paragraph 6 of the rules and regulations of the oil and gas section of the mining laws of West Virginia.

W. R. Dook
R. P. E. No. 1227

Error in closure = Less than 1/200'

- New Location
- Drill Deeper
- Abandonment

| | |
|-----------------------------|--------------------------------------|
| Company | NATIONAL PRODUCERS |
| Address | Box 218, Pennsboro, West Va. |
| Farm | E. G. Spencer |
| Tract | Acres 50 Lease No. |
| Well (Farm) No. | One Serial No. |
| Elevation (Spirit Level) | 865 |
| Quadrangle | West Union EC |
| County | Doddridge District Grant |
| Engineer | <i>W. R. Dook</i> |
| Engineer's Registration No. | 1227 |
| File No. | Drawing No. |
| Date | June 12, 1963 Scale 1" = 20 p = 330' |

STATE OF WEST VIRGINIA
DEPARTMENT OF MINES
OIL AND GAS DIVISION
CHARLESTON

WELL LOCATION MAP
FILE NO. Dod-1014

⊕ Denotes location of well on United States Topographic Maps, scale 1 to 62,500, latitude and longitude lines being represented by border lines as shown.

— Denotes one inch spaces on border line of original tracing.



STATE OF WEST VIRGINIA
DEPARTMENT OF MINES
OIL AND GAS DIVISION

Rotary
Spudder
Cable Tools
Storage

Quadrangle Center Point

WELL RECORD

Permit No. DOD-1014

Oil or Gas Well Oil & Gas
(KIND)

Company National Producers Inc.
Address Box 218, Pennsboro, W. Va.
Farm E G Spencer Acres 50
Location (waters) Knights Run
Well No. 1 Elev. 865
District Grant County Doddridge
The surface of tract is owned in fee by E G Spencer
Address West Union RFD W. Va
Mineral rights are owned by E G Spencer
West Union RFD Address W. Va
Drilling commenced 11-1-64
Drilling completed March 1965
Date Shot 9-8-65 From _____ To _____
With _____

| Casing and Tubing | Used in Drilling | Left in Well | Packers |
|-------------------|------------------|--------------|----------------|
| Size | | | Kind of Packer |
| 16 | 40' | 40' | |
| 13 | | | |
| 10 | | | Size of |
| 8 3/4 | | | |
| 6 3/4 | | | Depth set |
| 5 3/16 | | | |
| X 5 1/2 | 2195' | 2195' | Perf. top |
| 2 | | | Perf. bottom |
| Liners Used | | | Perf. top |
| | | | Perf. bottom |

Open Flow _____ /10ths Water in _____ Inch
_____ /10ths Merc. in _____ Inch
Volume 83,000 Cu. Ft.
Rock Pressure 420 lbs. hrs.
Oil Light Well .bbils., 1st 24 hrs.
WELL ACIDIZED _____
WELL FRACTURED 1; 200 Bbls Halliburton

CASING CEMENTED 5 1/2" SIZE 2195 No. Ft. 3-4-65 Date
COAL WAS ENCOUNTERED AT _____ FEET _____ INCHES
_____ FEET _____ INCHES
_____ FEET _____ INCHES

RESULT AFTER TREATMENT 10 Bbls Oil/Day
ROCK PRESSURE AFTER TREATMENT 50 lbs
Fresh Water _____ Feet Salt Water _____ Feet

83,000 cu ft/gal daily

| Formation | Color | Hard or Soft | Top | Bottom | Oil, Gas or Water | Depth | Remarks |
|-----------|-------|--------------|-----|--------|-------------------|-------|---------|
|-----------|-------|--------------|-----|--------|-------------------|-------|---------|

| Formations: | Top: | Bottom: | Formations: | Top: | Bottom: |
|----------------|------|---------|---------------------|------|---------|
| Clay | 0 | 8 | Red Rock | 770 | 810 |
| Sand | 8 | 19 | White Slate | 810 | 870 |
| Red Rock | 19 | 25 | Blue Shale | 870 | 880 |
| Slate | 25 | 40 | Red Rock | 880 | 925 |
| Red Rock | 40 | 46 | Slate & Shells | 925 | 973 |
| Lime | 46 | 58 | Sand | 973 | 1004 |
| Slate | 58 | 84 | White Slate | 1004 | 1020 |
| Red Rock | 84 | 90 | Slate & Shells | 1020 | 1068 |
| Lime | 90 | 96 | Sand | 1068 | 1135 |
| Shale | 96 | 120 | Slate & Shells | 1135 | 1145 |
| Red Rock | 120 | 138 | Black Slate | 1145 | 1190 |
| Slate | 138 | 145 | Slate & Shells | 1190 | 1297 |
| Red Rock | 145 | 152 | Sand | 1297 | 1400 |
| Lime | 152 | 157 | Shale | 1400 | 1405 |
| Red Rock | 157 | 165 | Sand | 1405 | 1470 |
| Slate & Shells | 165 | 180 | Black Slate | 1470 | 1508 |
| Red Rock | 180 | 185 | Sand | 1508 | 1610 |
| Slate | 185 | 205 | Black Slate | 1610 | 1630 |
| Sand | 205 | 215 | Lime | 1630 | 1645 |
| Slate | 215 | 220 | Black Slate | 1645 | 1650 |
| Lime | 220 | 225 | Sand | 1650 | 1690 |
| Slate | 225 | 255 | Slate & Shells | 1690 | 1743 |
| Red Rock | 255 | 263 | Red Lime | 1743 | 1764 |
| Slate | 263 | 305 | Slate | 1764 | 1783 |
| Lime | 305 | 335 | Little Lime | 1783 | 1807 |
| Red Rock | 335 | 360 | Slate (Pencil Cave) | 1807 | 1811 |
| Slate & Shells | 360 | 405 | Big Lime | 1811 | 1884 |
| Red Rock | 405 | 409 | Sand | 1884 | 2018 |
| Slate & Shells | 409 | 474 | Slate & Shells | 2018 | 2168 |
| Sand | 474 | 482 | Sand | 2168 | 2189 |
| Slate | 482 | 500 | Lime | 2189 | 2210 |
| Red Rock | 500 | 510 | Sand | 2210 | 2258 |
| Slate & Shells | 510 | 550 | Slate & Shells | 2258 | 2482 |
| Lime | 550 | 575 | Pink Rock | 2482 | 2490 |
| Slate | 575 | 608 | Slate & Shells | 2490 | 2606 |
| Sand | 608 | 637 | Sand | 2606 | 2610 |
| Slate & Shells | 634 | 645 | Shale | 2610 | 2630 |
| Lime | 645 | 660 | Sand | 2630 | 2632 |
| Red Rock | 660 | 668 | Shale | 2632 | 2805 |
| White Slate | 668 | 718 | Sand | 2805 | 2810 |
| Red Rock | 718 | 734 | Shale | 2810 | 2820 |
| Sand | 734 | 770 | Sand | 2820 | 2825 |
| | | | Shale | 2825 | 2960 |
| | | | Black Lime | 2960 | 3000 |