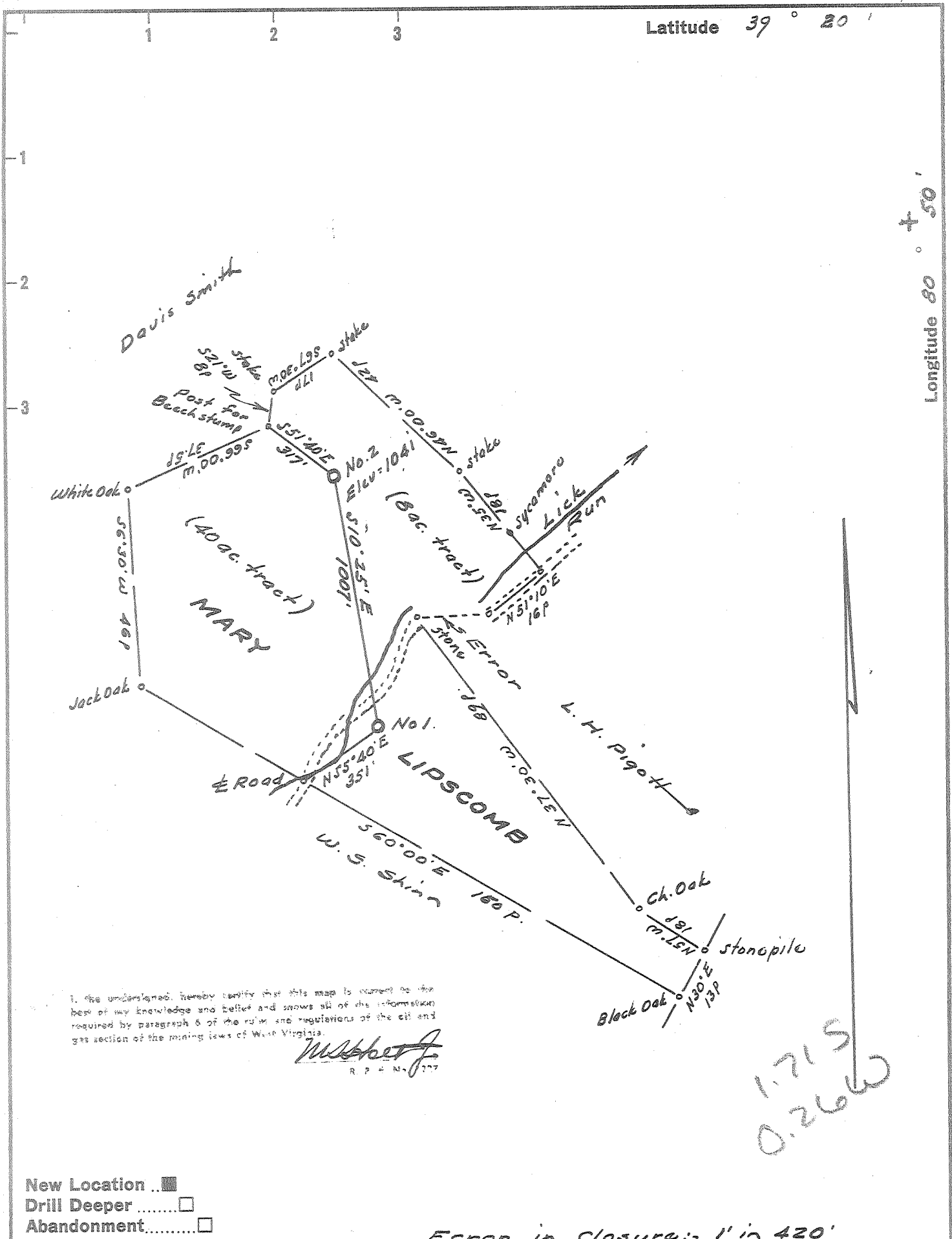


Latitude 39° 20'

Longitude 80° 50'



I, the undersigned, hereby certify that this map is correct to the best of my knowledge and belief and shows all of the information required by paragraph 5 of the rules and regulations of the oil and gas section of the mining laws of West Virginia.

W. S. Shinn
R. P. & N. 1177

1.715
0.26W

- New Location
- Drill Deeper
- Abandonment

Error in closure: 1' in 420'

Company Farrall L. Prior
 Address 720 Union Trust Bldg., Parkersburg
 Farm Mary Lipscomb
 Tract Acres 48 Lease No.
 Well (Farm) No. Two Serial No.
 Elevation (Spirit Level) 1041'
 Quadrangle West Union SC
 County Doddridge District Central
 Engineer W. S. Shinn
 Engineer's Registration No. 1227
 File No. Drawing No.
 Date Aug 23, 1963 Scale 1" = 300' = 495'

STATE OF WEST VIRGINIA
 DEPARTMENT OF MINES
 OIL AND GAS DIVISION
 CHARLESTON

WELL LOCATION MAP
 FILE NO. Dod-1057

- + Denotes location of well on United States Topographic Maps, scale 1 to 62,500, latitude and longitude lines being represented by border lines as shown.
- Denotes one inch spaces on border line of original tracing.