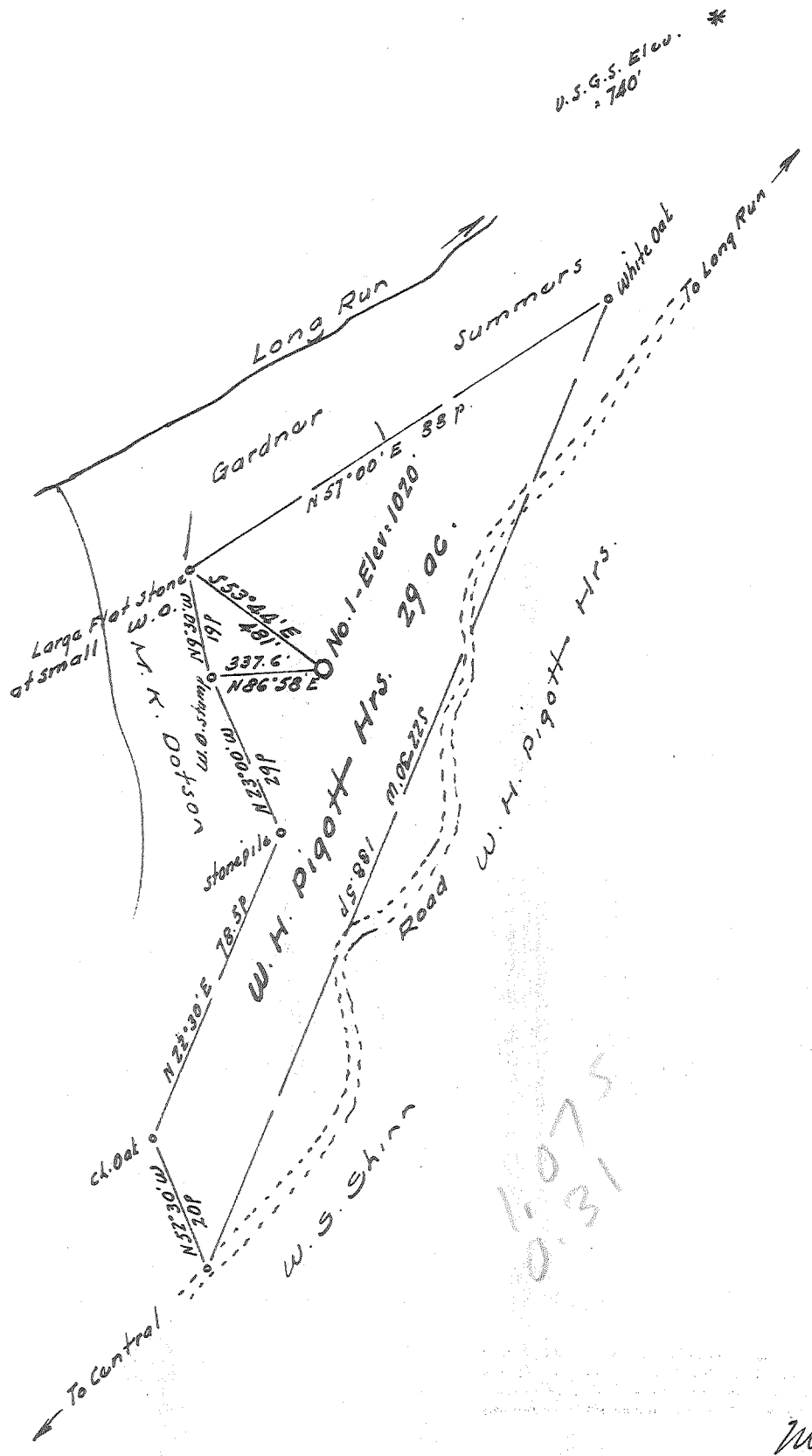


Latitude 39 ° 20 '

Longitude 80 ° 50 ' P



New Location
 Drill Deeper
 Abandonment

Error in Closure: - less than 1' in 300'

W. S. Shinn

Company Ferrill L. Prior
 Address 720 Union Trust Bldg. Parkersburg, W. Va.
 Farm W. H. Pigott Hrs. 29 ac tract
 Tract _____ Acres 29 Lease No. _____
 Well (Farm) No. One Serial No. _____
 Elevation (Spirit Level) 1010
 Quadrangle West Union - 50
 County Doddridge District Control
 Engineer W. S. Shinn
 Engineer's Registration No. 1727
 File No. _____ Drawing No. _____
 Date Oct 9, 1963 Scale 1" = 300' = 495'

STATE OF WEST VIRGINIA
 DEPARTMENT OF MINES
 OIL AND GAS DIVISION
 CHARLESTON

WELL LOCATION MAP
 FILE NO. Dod-1065

+ Denotes location of well on United States Topographic Maps, scale 1 to 62,500, latitude and longitude lines being represented by border lines as shown.
 - Denotes one inch spaces on border line of original tracing.

66 89



STATE OF WEST VIRGINIA
DEPARTMENT OF MINES
OIL AND GAS DIVISION

Rotary
Spudger
Cable Tools
Storage

Quadrangle WEST UNION

WELL RECORD

Permit No. DOD-1065

Oil or Gas Well OIL (KIND)

Company PRIOR OIL COMPANY
Address 720 UNION TRUST BLDG. PARKERSBURG, W. VA.
Farm W. H. PIGOTT Acres 29
Location (waters) _____
Well No. 1 Elev. 1010'
District CENTRAL County DODDRIDGE
The surface of tract is owned in fee by Henrietta Pigott
Address WEST UNION, W. VA.
Mineral rights are owned by HENRIETTA PIGOTT, ETAL
Address WEST UNION, W. VA.
Drilling commenced 10/24/63
Drilling completed 11/23/63
Date Shot _____ From _____ To _____
With _____
Open Flow _____ /10ths Water in _____ Inch
_____ /10ths Merc. in _____ Inch
Volume _____ Cu. Ft.
Rock Pressure _____ lbs. _____ hrs.
Oil _____ bbls., 1st 24 hrs.
WELL ACIDIZED 200 gal.
WELL FRACTURED 300 sacks - 350 bbls.

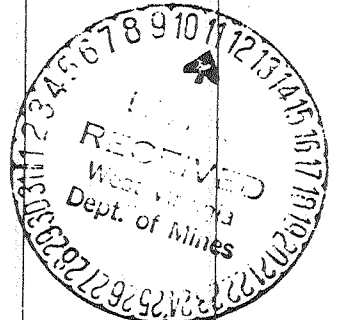
Casing and Tubing	Used in Drilling	Left in Well	Packers
Size			Kind of Packer
16	17'	17'	
13			
10	290'		Size of
8 3/4	1021'		
6 3/4			Depth set
5 1/2 4 1/2"	1936'	1936'	
3			Perf. top <u>OPEN HOLE</u>
2			Perf. bottom <u>FRAC.</u>
Liners Used			Perf. top _____
			Perf. bottom _____

CASING CEMENTED 4 1/2" SIZE 1936' No. 11/18/63 Date
18 sks. cement-Halliburton

COAL WAS ENCOUNTERED AT _____ FEET _____ INCHES
_____ FEET _____ INCHES
NO COAL
_____ FEET _____ INCHES _____ FEET _____ INCHES

RESULT AFTER TREATMENT 9-11 bbls. - 24 hrs.
ROCK PRESSURE AFTER TREATMENT 80#
Fresh Water NONE RECORDED Feet _____ Salt Water NONE RECORDED Feet _____

Formation	Color	Hard or Soft	Top	Bottom	Oil, Gas or Water	Depth	Remarks
Surface			0	14			
Gray sand			14	30			
Shale			30	50			
Red rock			50	79			
Slate shale			79	92			
Red rock			92	110			
Gray shale			110	140			
Red rock			140	194			
Sand & shells			194	220			
Red rock			220	336			
Sand			336	385			
Sandy lime			385	425			
Red rock			425	450			
Sand			450	550			
Red rock-shale			550	555			
Gray shale			555	605			
Lime-hard			605	630			
Shale-shells			630	660			
Slate			660	699			
Sandy lime			699	715			
Red rock			715	735			
Slate shells			735	750			
Red rock-shells			750	828			
Lime-hard			828	844			
Slate, sand, shells			844	864			
Gritty lime			864	912			
Gray lime-hard			912	935			



Formation	Color	Hard or Soft	Top	Bottom	Oil, Gas or Water	Depth Found	Remarks
Red rock -			935	955			
Lime-hard			955	990			
Slate-shells			990	1013			
Lime			1013	1051			
Dark shale			1051	1072			
Sand			1072	1095			
Gray shale			1095	1113			
Lime-med. hard			1113	1125			
Sand			1125	1145			
Slate, sand, shells			1145	1155			
Hard lime q			1155	1175			
Gray slate			1175	1230			
Dark lime			1230	1255			
Gray slate			1255	1275			
Slate, sand, shells			1275	1290			
Lime			1290	1306			
Shale			1306	1332			
Sand			1332	1480			
Sandy shale			1480	1560			
Sand			1560	1680			
Slate, sand, shells			1680	1692			
Sand			1692	1713			
Dark shale			1713	1726			
Dark lime			1726	1745			
Sand & shale			1745	1775			
Red lime			1775	1795			
Dark lime			1795	1828			
Pencil slate			1828	1840			
Big lime			1840	1926			
Injun sand			1926	1964	Gas & oil	1933-1935	
Sand & shale			1964	1985 T.D.	Oil	1935-1970	

Date November 29, 1963

APPROVED PRIOR OIL COMPANY, Owner

By Edward R. Johnson Manager
(Title)