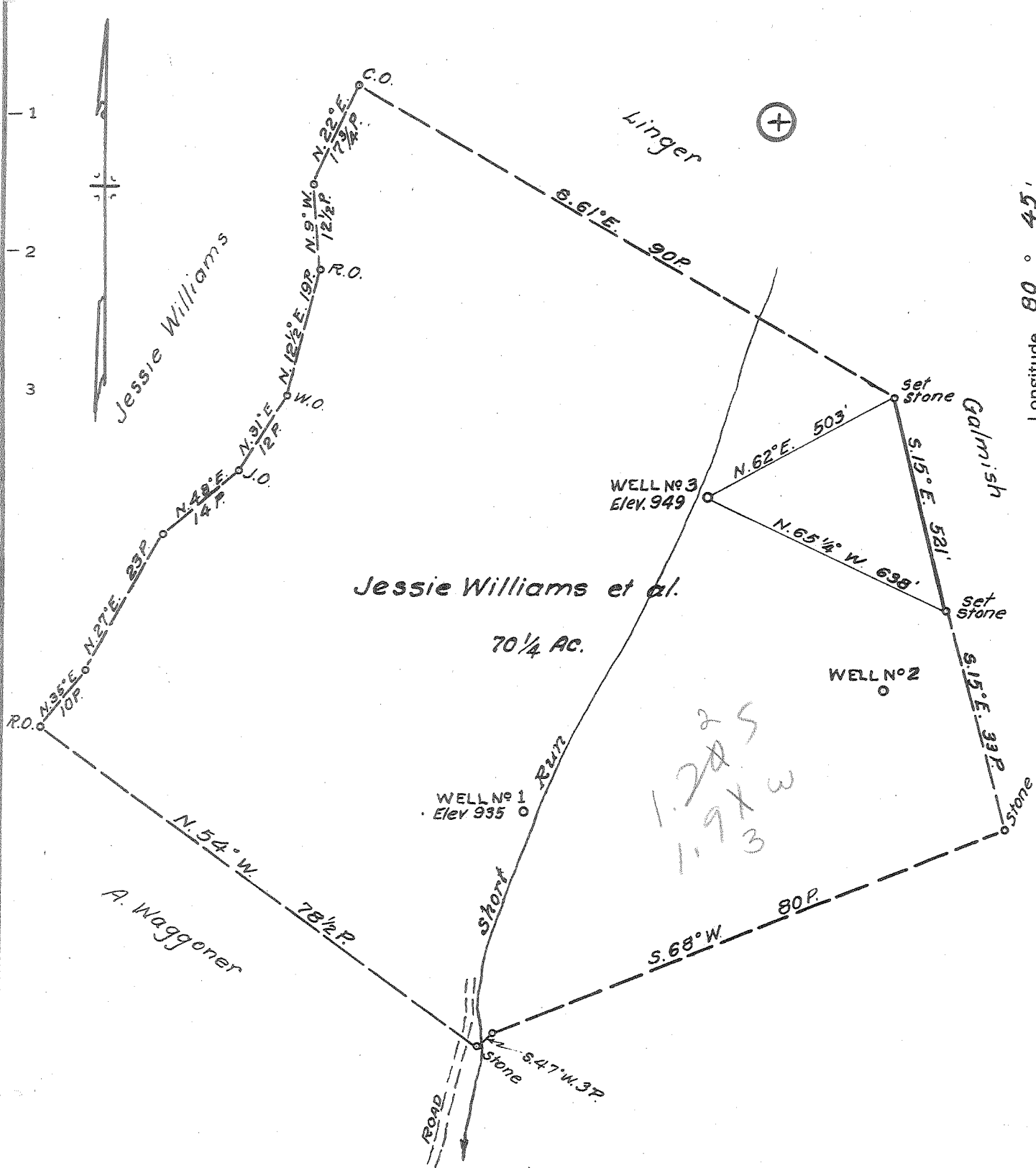


Latitude 39° 10'

Longitude 80° 45'



MINIMUM ERROR OF CLOSURE 1/500

SOURCE OF ELEVATION Well No. 1, this farm (Jessie Williams) Elev. 935

New Location
 Drill Deeper
 Abandonment

"I, THE UNDERSIGNED, HEREBY CERTIFY THAT THIS MAP IS CORRECT TO THE BEST OF MY KNOWLEDGE AND BELIEF AND SHOWS ALL THE INFORMATION REQUIRED BY PARAGRAPH 6 OF THE RULES AND REGULATIONS OF THE OIL AND GAS SECTION OF THE MINING LAWS OF WEST VIRGINIA."

Company Williams Oil & Gas Co. - M. T. Williams, Agt.
 Address Parkersburg, W. Va.
 Farm Jessie Williams et al.
 Tract 1 Acres 70 1/4 Ac. Lease No. _____
 Well (Farm) No. 3 Serial No. _____
 Elevation (Spirit Level) 949
 Quadrangle Holbrook - E.C. Map G-8-1
 County Doddridge District Cove
 Engineer Parker E. Peters
 Engineer's Registration No. 485
 File No. _____ Drawing No. _____
 Date Nov. 8, 1963 Scale 1" = 20 P.

STATE OF WEST VIRGINIA
 DEPARTMENT OF MINES
 OIL AND GAS DIVISION
 CHARLESTON

WELL LOCATION MAP
 FILE NO. Dod-1074

+ Denotes location of well on United States Topographic Maps, scale 1 to 62,500, latitude and longitude lines being represented by border lines as shown.

- Denotes one inch spaces on border line of original tracing.

6-6-133



STATE OF WEST VIRGINIA
DEPARTMENT OF MINES
OIL AND GAS DIVISION **4**

Rotary
Spudder
Cable Tools
Storage *Oil show Gas well*
Oil or Gas Well O & G
(KIND)

Quadrangle Holbrook

WELL RECORD

Permit No. Dod-1074

Company Williams Oil & Gas Company
Address 2200 Nora St., Parkersburg, W.Va.
Farm Jessie Williams Acres 75
Location (waters) Middle Fork
Well No. 3 Elev. 949'
District Cove County Doddridge
The surface of tract is owned in fee by Jessie Williams
Address Auburn, W. Va.
Mineral rights are owned by J. Williams & Bell Heirs
Address _____
Drilling commenced 1-6-64
Drilling completed 2-21-64
Date Shot _____ From _____ To _____
With _____
Open Flow /10ths Water in _____ Inch
/10ths Merc. in _____ Inch
Volume _____ Cu. Ft.
Rock Pressure _____ lbs. _____ hrs.
Oil _____ bbls., 1st 24 hrs.
WELL ACIDIZED _____

Casing and Tubing	Used in Drilling	Left in Well	Packers
Size			Kind of Packer
16			
18			
10	249'	249	Size of
8 1/2	909'	-0-	
6 1/2			Depth set
5 3/16	1769'	1769'	
3			Perf. top
2			Perf. bottom
Liners Used			Perf. top
			Perf. bottom

CASING CEMENTED 5 3/16 SIZE 1769 No. Ft. _____ Date _____
85 lbs cement; 8 hrs aquapels - D. Mill
COAL WAS ENCOUNTERED AT _____ FEET _____ INCHES
_____ FEET _____ INCHES FEET _____ INCHES
_____ FEET _____ INCHES FEET _____ INCHES

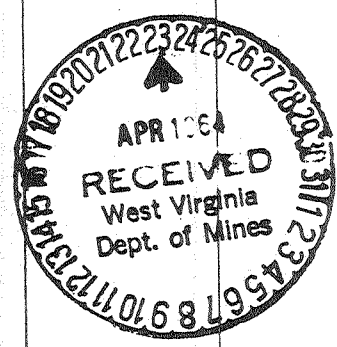
WELL FRACTURED 3-17-64 - 30,000# sand; 34,500 Gal. water
average pressure 1407#

RESULT AFTER TREATMENT Showing of oil - 100 M cu. ft. Gas (estimated)

ROCK PRESSURE AFTER TREATMENT 400# after shut in 12 hrs.

Fresh Water 35' Feet Salt Water 770' Feet

Formation	Color	Hard or Soft	Top	Bottom	Oil, Gas or Water	Depth	Remarks
Soil			0	3			
Red Rock			3	8			
Sand			8	15			
Slate & Shells			15	95	Water at 35		
Red Rock			95	115			
Sand			115	130			
Slate			130	142			
Red Rock			142	160			
Slate Shells			160	172			
Sand			172	193			
Slate			193	205			
Sand			205	218			
Slate			218	223			
Sand			223	247			
Slate			247	270			
RED Rock			270	275			
SLATE Shells			275	353			
Lime Shells			353	465			
Red Rock			465	480			
Lime Shale			480	505			
Red Lime			505	530			
White Slate			530	545			
Red Rock			545	605			
Lime			605	625			
Pink Rock			625	650			
Lime & Sand			650	680			
Slate Shells			680	704			
Pink Rock			704	730			
Sand			730	785	Water at 770		



Formation	Color	Hard or Soft	Top 4	Bottom	Oil, Gas or Water	Depth Found	Remarks
Slate Shells			785	840			
Black Slate			840	855			
Slate Shells			855	890			
Sand			890	929			
Slate Shells			929	1065			
No. 1 Salt Sand			1065	1088			
Slate			1088	1090			
Sand			1090	1102			
Slate			1102	1125			
No. 2 Salt Sand			1125	1150			
Slate Shells			1150	1315			
Stray Sand			1315	1363			
Slate Shells			1363	1395			
No. 3 Salt Sand			1395	1470			
Black Slate			1470	1520	Showing of gas		
Maxton Sand			1520	1574			
Black Slate			1574	1620	Showing of gas		
Slate & Lime Shells			1620	1656			
Red Lime			1656	1660			
Pencil Cave			1660	1667			
Little Lime			1667	1690			
Blue Monday			1690	1720			
Big Lime			1720	1785			
Big Injun			1785	1830			
Lime			1830	1835			
Big Injun			1835	1850			
Slate Shells			1850	1980			
Weir Sand			1980	2095			
Slate			2095	2185			
Sand			2185	2195			
Slate Shells			2195	2280			
Gritty Lime			2280	2325			
Slate			2325	2401			
Gordon			2401	2407	Gas (Blew out in 48 hrs.		
Slate			2407	2459	Total Depth		

Date 4-17, 1964

APPROVED Williams Oil & Gas Co, Owner

By M. T. Williams Agt
(Title)