

Company PRIOR OIL COMPANY

Address UNION TRUST BLDG, PARKERSBURG, W. VA.

Farm AUDRA DOTSON

Tract 1 Acres 41.12 Lease No. _____

Well (Farm) No. 2 Serial No. _____

Elevation (Spirit Level) 1038

Quadrangle WEST UNION - 5C

County DODDRIDGE District CENTRAL

Engineer Gordon C. Rallett

Engineer's Registration No. 4052

File No. _____ Drawing No. _____

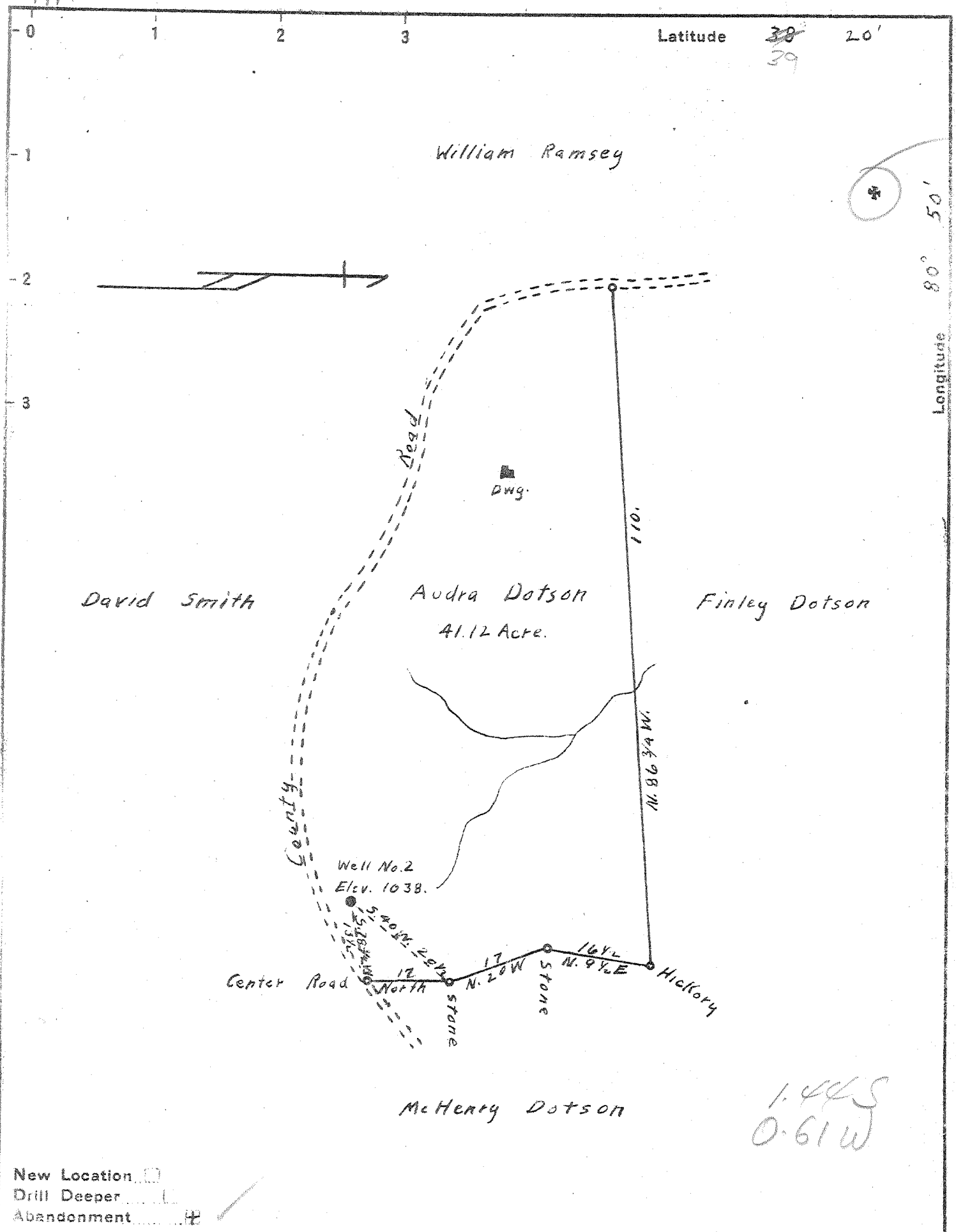
Date JANUARY 27, 1964 Scale 1" = 100'

STATE OF WEST VIRGINIA
DEPARTMENT OF MINES
OIL AND GAS DIVISION
CHARLESTON

WELL LOCATION MAP
FILE NO. DOD-1025-R
was 017401A, 71458

+ Denotes location of well on United States Topographic Maps, scale 1 to 62,500, latitude and longitude lines being represented by border lines as shown.

— Denotes one inch spaces on border line of original tracing.



Company Reno Oil Co.
 Address Sistersville, W. Va.
 Farm Audra Dotson
 Tract _____ Acres 41.12 Lease No. _____
 Well (Farm) No. 2 Serial No. _____
 Elevation (Spirit Level) 1038.
 Quadrangle West Union
 County Doddridge District Central
 Engineer A. K. Westfall
 Engineer's Registration No. Surveyor
 File No. _____ Drawing No. _____
 Date June 11, 1942 Scale 1" = 20 Poles

STATE OF WEST VIRGINIA
 DEPARTMENT OF MINES
 OIL AND GAS DIVISION
 CHARLESTON

WELL LOCATION MAP
 FILE NO. DOD-401-A
row 019 1095

+ Denotes location of well on United States Topographic Maps, scale 1 to 62,500, latitude and longitude lines being represented by border lines as shown.

- Denotes one inch spaces on border line of original tracing.