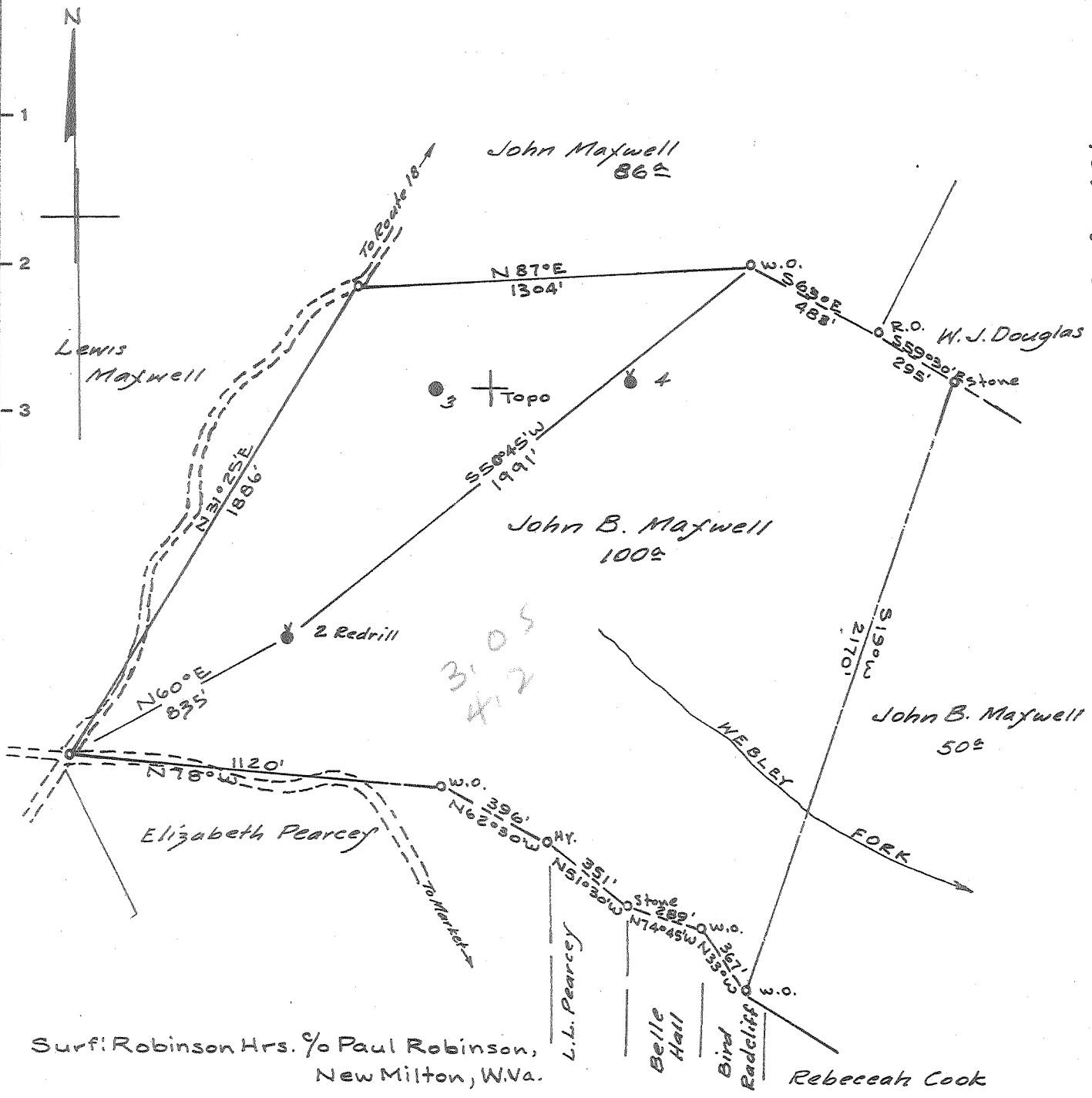


LATITUDE 39° 15'

LONGITUDE 80° 40'



Surf: Robinson Hrs. % Paul Robinson, New Milton, W.Va.

Coal: No Commercial Coal.

Minimum Error of Closure 1' in 200'

Source of Elevation U.S.G.S. Bronze Tablet, 88' South of Ref

mark at R.R. Spike in base of 20" Hickory Tree El. 1226.0'

I, the undersigned, hereby certify that this map is correct to the best of my knowledge and belief and shows all the information required by paragraph 6 of the rules and regulations of the oil and gas section of the mining laws of West Virginia.

- Redrill...
- Fracture.....
- New Location.....
- Drill Deeper.....
- Abandonment.....

Signed: A.C. Hillbert
Map No. N17 Squares: N S 17 E W T 8

Company PENNZOIL COMPANY
 Address P.O. Box 1588, Parkersburg, W.Va.
 Farm John B. Maxwell
 Tract _____ Acres 100 Lease No. 31317
 Well (Farm) No. 2 Redrill Serial No. _____
 Elevation (Spirit Level) 1125'
 Quadrangle VADIS - NW
 County DODDRIDGE District NEW MILTON
 Engineer A.C. Hillbert
 Engineer's Registration No. 2534
 File No. 1375 Drawing No. _____
 Date May 20, 1964 Scale 1"=500'

STATE OF WEST VIRGINIA
 DEPARTMENT OF MINES
 OIL AND GAS DIVISION
 CHARLESTON

WELL LOCATION MAP

FILE NO. DOD-1134-R
WAD 712A

+ Denotes location of well on United States Topographic Maps, scale 1 to 62,500, latitude and longitude lines being represented by border lines as shown.

- Denotes one inch spaces on border line of original tracing.



STATE OF WEST VIRGINIA
DEPARTMENT OF MINES
OIL AND GAS DIVISION

595

Permit No. 714-A -> now 1134 **WELL RECORD**

Oil or Gas Well X (KIND)

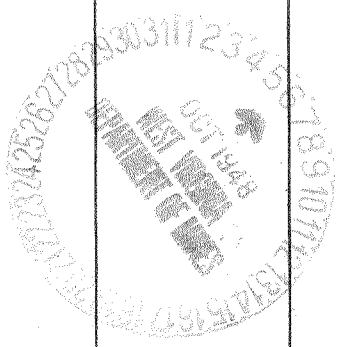
Company Joe Rubin S. Beren H Strauss
Address 2008 E. 7th St. Parkersburg, W. Va.
Farm J. B. Maxwell Acres 100
Location (waters) _____
Well No. #2 Elev. _____
District New Milton County Doddridge
The surface of tract is owned in fee by _____
Address _____
Mineral rights are owned by _____
Address _____
Drilling commenced _____
Drilling completed May 4, 1900
Date Shot _____ From _____ To _____
With _____

Open Flow /10ths Water in _____ Inch
/10ths Merc. in _____ Inch
Volume _____ Cu. Ft.
Rock Pressure _____ lbs. _____ hrs.
Oil _____ bbls., 1st 24 hrs.
Fresh water _____ feet _____ feet
Salt water _____ feet _____ feet

| Casing and Tubing | Used in Drilling | Left in Well | Packers |
|-------------------|------------------|--------------|----------------|
| Size | | | |
| 16 | | | Kind of Packer |
| 13 | | | No record |
| 10 | 352 | 352 | Size of |
| 8 1/4 | 1035 | 1035 | |
| 6% | 1820 | 1820 | Depth set |
| 5 3/16 | 1877 | 1877 | |
| 3 | | | Perf. top |
| 2 | | | Perf. bottom |
| Liners Used | | | Perf. top |
| | | | Perf. bottom |

CASING CEMENTED _____ SIZE _____ No. Ft. _____ Date _____
COAL WAS ENCOUNTERED AT _____ FEET _____ INCHES
_____ FEET _____ INCHES _____ FEET _____ INCHES
_____ FEET _____ INCHES _____ FEET _____ INCHES

| Formation | Color | Hard or Soft | Top | Bottom | Oil, Gas or Water | Depth Found | Remarks |
|--------------|-------|--------------|------|--------|-------------------|-------------|---------|
| Dunkard Sand | | | 1030 | 1050 | | | |
| Salt Sand | | | 1288 | 1392 | | | |
| Maxon Sand | | | 1495 | 1541 | | | |
| Big Lime | | | 1815 | 1880 | | | |
| Big Injun | | | 1880 | 1954 | | | |
| Fifty Foot | | | 2275 | 2320 | | | |
| Gordon Sand | | | 2531 | 2534 | | | |
| Total Depth | | | | 2562 | | | |



| Formation | Color | Hard or Soft | Top | Bottom | Oil, Gas or Water | Depth Found | Remarks |
|-----------|-------|--------------|-----|--------|-------------------|-------------|---------|
| | | | | | | | |
| | | | | | | | |
| | | | | | | | |
| | | | | | | | |
| | | | | | | | |
| | | | | | | | |
| | | | | | | | |
| | | | | | | | |
| | | | | | | | |
| | | | | | | | |
| | | | | | | | |
| | | | | | | | |
| | | | | | | | |
| | | | | | | | |
| | | | | | | | |
| | | | | | | | |
| | | | | | | | |
| | | | | | | | |
| | | | | | | | |
| | | | | | | | |
| | | | | | | | |
| | | | | | | | |
| | | | | | | | |
| | | | | | | | |
| | | | | | | | |
| | | | | | | | |
| | | | | | | | |
| | | | | | | | |

Date _____, 19____

APPROVED _____, Owner

By _____ (Title)



STATE OF WEST VIRGINIA
DEPARTMENT OF MINES
OIL AND GAS DIVISION 7

Quadrangle VADIS

WELL RECORD

Permit No. DOD-1134-Redrill

Oil or Gas Well _____
(KIND)

Company PENNZOIL COMPANY
Address P. O. Box 1588, Parkersburg, W. Va.
Farm J. B. Maxwell Acres 100
Location (waters) Webley Fork
Well No. 2-Redrill Elev. 1125-Floor
District New Milton County Doddrige
The surface of tract is owned in fee by Robinson Beirs
c/o Paul Robinson
Address New Milton, W. Va.
Mineral rights are owned by Paul Robinson, Attorney
Address New Milton, W. Va.
Drilling commenced June 12, 1964
Drilling completed June 25, 1964
Date Shot - From To
With
Open Flow /10ths Water in _____ Inch
/10ths Merc. in _____ Inch
Volume Show _____ Cu. Ft.
Rock Pressure _____ lbs. _____ hrs.
Oil Show _____ bbls., 1st 24 hrs.
WELL ACIDIZED _____

| Casing and Tubing | Used in Drilling | Left in Well | Packers |
|-------------------|------------------|--------------|----------------|
| Size | | | Kind of Packer |
| 16" | 16' | 16' | - |
| 13 | | | Size of |
| 10 | | | Depth set |
| 8 5/8" | 150' | NONE | Perf. top |
| 7" | 1820' | 1820' | Perf. bottom |
| 4 1/2" | 2011' | 2011' | Perf. top |
| 3 | | | Perf. bottom |
| 2 | | | |
| Liners Used | | | |

CASING CEMENTED 4 1/2" SIZE 2011 No. Ft. 6/29/64 Date

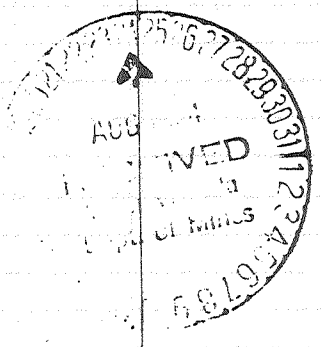
COAL WAS ENCOUNTERED AT _____ FEET _____ INCHES
_____ FEET _____ INCHES
_____ FEET _____ INCHES

WELL FRACTURED. 7/7/64 - Used: 1,134 Bbls. Water, 45,000 Lbs. 20-40 Sand, 300 Gals. Mud Acid, 175 Lbs. J-98, 350 Lbs. J-84, 25 Gals. Detergent and 40 Gals. Freflo

RESULT AFTER TREATMENT Gas = 300,000 Cu. Ft.
Oil = 5,881 bbls. day
ROCK PRESSURE AFTER TREATMENT 500 Lbs.

Fresh Water _____ Feet Salt Water _____ Feet

| Formation | Color | Hard or Soft | Top | Bottom | Oil, Gas or Water | Depth | Remarks |
|---|-------|--------------|-----|--------|-------------------|-------|---------|
| SEE BACK OF THIS SHEET FOR FORMATION RECORD | | | | | | | |



(7)

| FORMATION RECORD | | | | | | | | | |
|------------------|------|--------|------------------------|------|------|-----|--------|------------------------|------|
| KIND | TOP | BOTTOM | STEEL LINE MEAS. | TEST | KIND | TOP | BOTTOM | STEEL LINE MEAS. | TEST |
| Conductor | | 16 | | | | | | | |
| Dunkard Sand | 1030 | 1050 | | | | | | | |
| Salt Sand | 1288 | 1392 | | | | | | | |
| Maxon Sand | 1495 | 1541 | | | | | | | |
| Little Lime | 1783 | 1809 | | | | | | | |
| Blue Monday | 1809 | 1836 | | | | | | | |
| Gas Pay | | 1832 | | | | | | | |
| Big Lime | 1836 | 1898 | | | | | | | |
| Big Injun | 1898 | 1974 | | | | | | | |
| Oil Pay | 1958 | 1963 | | | | | | | |
| TOTAL DEPTH | | 2011 | | | | | | | |

RECEIVED
AUG 19 1964
LAND-LEASE
RECORDS DEPT.

(OVER)

Date August 21, 1964

APPROVED PENNZOIL COMPANY, Owner

By George W. Wilsman
George W. Wilsman, (Title Manager)
Land-Lease Records Department