

I, the undersigned, hereby certify that this map is correct to the best of my knowledge and belief, and that the same is a true and correct copy of the original.

W. H. Smith

New Location
 Drill Deeper
 Abandonment *4/74* Elevation reference: - Hope Well No. 3802 = 1055'
 Error in closure: - Less than 1' in 300'

Company Salem Pit Supply, Inc.
 Address Salem, W. Va.
 Farm O. A. Roach
 Tract Acres 87 - Lease No. _____
 Well (Farm) No. Two - Serial No. _____
 Elevation (Spirit Level) 42 SC
 Quadrangle Curtain 8.2 N.
 County Doddridge District Grant
 Engineer W. H. Smith
 Engineer's Registration No. 1227
 File No. _____ Drawing No. _____
 Date Nov. 23, 1964 Scale 1" = 660'

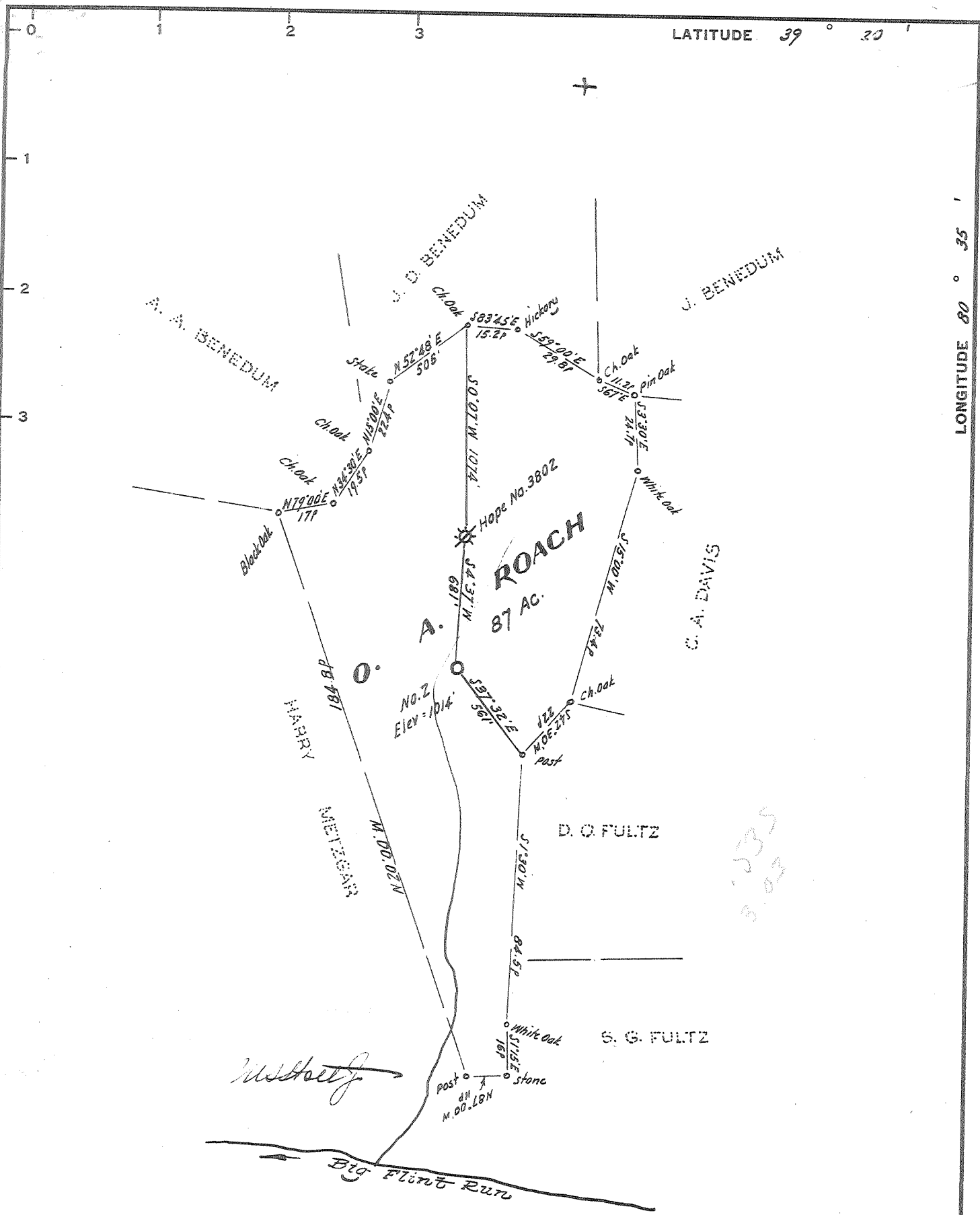
STATE OF WEST VIRGINIA
 DEPARTMENT OF MINES
 OIL AND GAS DIVISION
 CHARLESTON

WELL LOCATION MAP
 FILE NO. Dod-1200-P

+ Denotes location of well on United States Topographic Maps, scale 1 to 62,500, latitude and longitude lines being represented by border lines as shown.

- Denotes one inch spaces on border line of original tracing.

47 017



New Location
 Drill Deeper
 Abandonment

Elevation reference: - Hope Well No. 3802 = 1055'
 Error in closure: - Less than 1' in 200'

Company Prior Oil Company
 Address 224 Washington Bud. Belpre, Ohio
 Farm O.A. Roach
 Tract _____ Acres 87 Lease No. _____
 Well (Farm) No. Two Serial No. _____
 Elevation (Spirit Level) 1014
 Quadrangle Centerpoint - SC
 County Doddridge District Grant
 Engineer Missfeldt
 Engineer's Registration No. 1227
 File No. _____ Drawing No. _____
 Date Nov. 23, 1964 Scale 1" = 660'

STATE OF WEST VIRGINIA
 DEPARTMENT OF MINES
 OIL AND GAS DIVISION
 CHARLESTON

WELL LOCATION MAP
 FILE NO. Dod-1200

+ Denotes location of well on United States Topographic Maps, scale 1 to 62,500, latitude and longitude lines being represented by border lines as shown.
 - Denotes one inch spaces on border line of original tracing.



STATE OF WEST VIRGINIA
DEPARTMENT OF MINES
OIL AND GAS DIVISION

Rotary
Spudder
Cable Tools
Storage

Quadrangle CENTERPOINT

WELL RECORD

Permit No. DOD-1200

Oil or Gas Well GAS
(KIND)

Company PRIOR OIL COMPANY
Address 224 WASHINGTON BLVD., BELPRE, OHIO
Farm O. A. ROACH Acres 83
Location (waters) BIG FLINT
Well No. TWO Elev. 1014
District GRANT County DODDRIDGE
The surface of tract is owned in fee by MRS. W. A. FORD
Address WEST UNION, W. VA.
Mineral rights are owned by HARRISON-RITCHIE OIL & GAS CO.
Address CLARKSBURG, W. VA.
Drilling commenced 11/21/64
Drilling completed 12/22/64
Date Shot From To
With
Open Flow /10ths Water in Inch
/10ths Merc. in Inch
Volume Cu. Ft.
Rock Pressure lbs. hrs.
Oil bbls., 1st 24 hrs.
WELL ACIDIZED 250 GAL.
WELL FRACTURED 30,000# ROTARY-WELL DRILLED WITH MUD & CIRCULATING GEL

| Casing and Tubing | Used in Drilling | Left in Well | Packers |
|-------------------|------------------|--------------|-------------------|
| Size | | | Kind of Packer |
| 16 | | | |
| 13 | | | |
| 10 | | | Size of |
| 8 3/4 | n 100 | 100 | |
| 6 3/4 | | | Depth set |
| 5 3/16 | | | |
| 4 1/2 | 2104 | 2104 | Perf. top 1812 |
| 2 | | | Perf. bottom 1814 |
| Liners Used | | | Perf. top |
| | | | Perf. bottom |

CASING CEMENTED 4 1/2 SIZE 2104 No. Ft. 12/11/64 Date
for sh. cement - Drill
NO COAL
COAL WAS ENCOUNTERED AT FEET INCHES
FEET INCHES FEET INCHES
FEET INCHES FEET INCHES

RESULT AFTER TREATMENT 1,700 MCF
ROCK PRESSURE AFTER TREATMENT 450#
Fresh Water NONE RECORDED Feet Salt Water NONE RECORDED Feet

| Formation | Color | Hard or Soft | Top | Bottom | Oil, Gas or Water | Depth | Remarks |
|----------------|-------|--------------|------|--------|-------------------|-------|---------|
| Surface | | | 0 | 65 | | | |
| Shale | | | 65 | 115 | | | |
| Sandy shale | | | 115 | 145 | | | |
| Shale | | | 145 | 180 | | | |
| Sandy shale | | | 180 | 265 | | | |
| Shale | | | 265 | 345 | | | |
| Lime | | | 345 | 365 | | | |
| Lime & shale | | | 365 | 385 | | | |
| Lime | | | 385 | 395 | | | |
| Sand & lime | | | 395 | 410 | | | |
| Lime | | | 410 | 435 | | | |
| Shale | | | 435 | 525 | | | |
| Sand | | | 525 | 700 | | | |
| Shale & pyrite | | | 700 | 745 | | | |
| Shale | | | 745 | 1260 | | | |
| Sand | | | 1260 | 1435 | | | |
| Lime & Sand | | | 1435 | 1485 | | | |
| Sand | | | 1485 | 1815 | | | |
| Lime & shale | | | 1815 | 1865 | | | |
| Big Lime | | | 1865 | 1972 | | | |
| Sandy lime | | | 1972 | 2036 | | | |
| Shale | | | 2036 | 2096 | | | |

