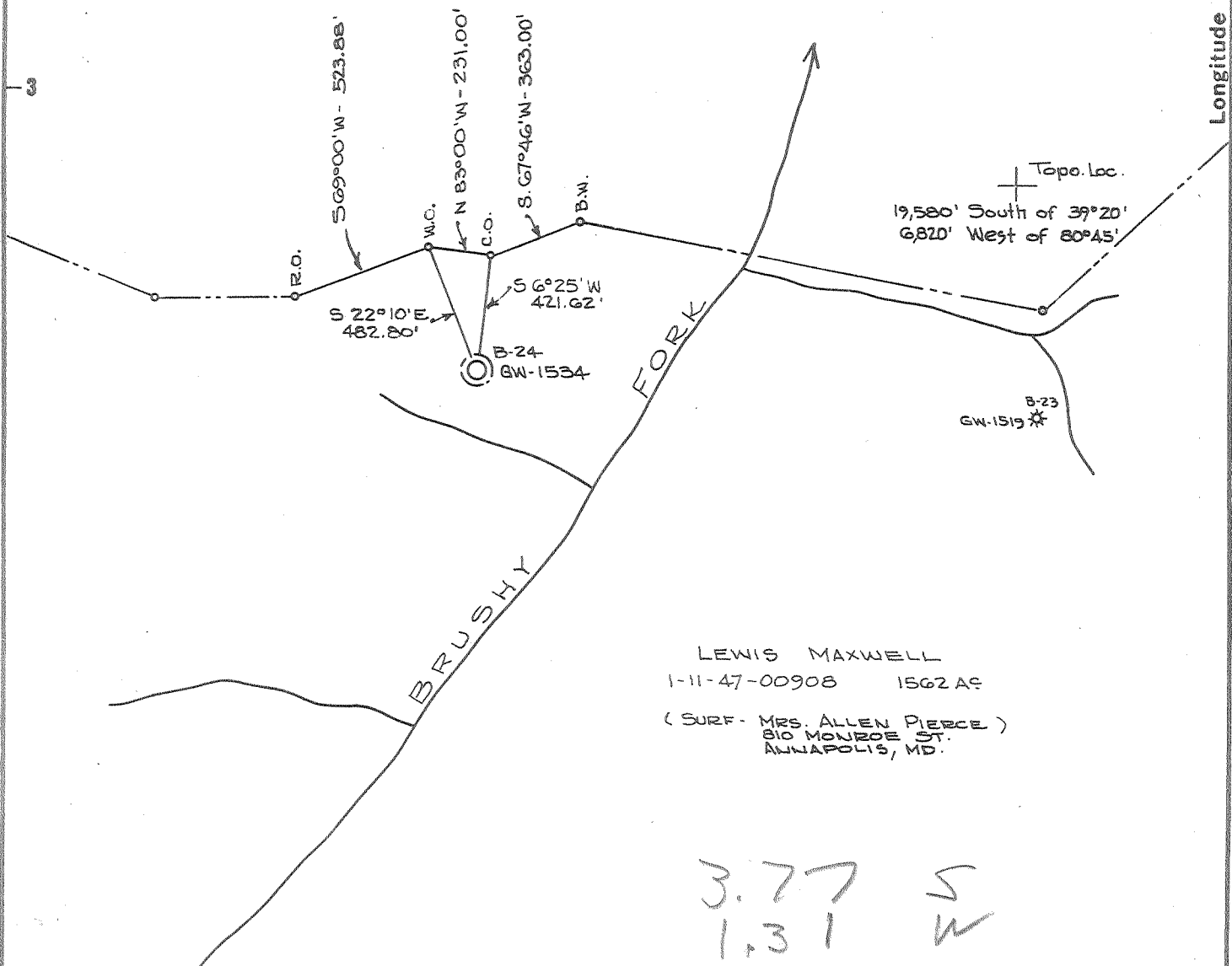


Latitude 39° 20'

Longitude 80° 45'

JOSEPH CHEUVRONT



LEWIS MAXWELL  
 1-11-47-00908 1562 AC  
 (SURF - MRS. ALLEN PIERCE)  
 810 MONROE ST.  
 ANNAPOLIS, MD.

3.77 S  
 1.31 W

NOTE - ELEVATION TAKEN FROM GW-1519

THE ACCURACY OF THIS SURVEY IS WITHIN THE LIMITS PRESCRIBED BY THE OIL AND GAS DIVISION OF THE DEPARTMENT OF MINES.

I, THE UNDERSIGNED, HEREBY CERTIFY THAT THIS MAP IS CORRECT TO THE BEST OF MY KNOWLEDGE AND BELIEF AND SHOWS ALL THE INFORMATION REQUIRED BY PARAGRAPH 6 OF THE RULES AND REGULATIONS OF THE OIL AND GAS SECTION OF THE MINING LAWS OF WEST VIRGINIA.

New Location   
 Drill Deeper   
 Abandonment

Company CITIES SERVICE OIL COMPANY  
 Address Box 873, CHARLESTON, W.VA.  
 Farm LEWIS MAXWELL "B"  
 Tract \_\_\_\_\_ Acres 1562 Lease No. 1-11-47-00908  
 Well (Farm) No. B-24 Serial No. GW-1534  
 Elevation (Spirit Level) 1017.38'  
 Quadrangle WEST UNION: 7-5375 W-131  
 County DODDRIDGE District WEST UNION  
 Engineer Wendell J. Moore  
 Engineer's Registration No. 2113  
 File No. \_\_\_\_\_ Drawing No. W-11-65  
 Date 8 MARCH 65 Scale 1"=600'

STATE OF WEST VIRGINIA  
 DEPARTMENT OF MINES  
 OIL AND GAS DIVISION  
 CHARLESTON

WELL LOCATION MAP  
 FILE NO. DOD-1231

+ Denotes location of well on United States Topographic Maps, scale 1 to 62500 latitude and longitude lines being represented by border lines as shown.

- Denotes one inch spaces on border line of original tracing.

Bag Samples 1500-TD

6-6-099



STATE OF WEST VIRGINIA  
DEPARTMENT OF MINES  
OIL AND GAS DIVISION / 0

Rotary   
Spudder   
Cable Tools   
Storage

Quadrangle West Union 7 SW

Permit No. Dod-1231

WELL RECORD

Oil or Gas Well Gas

(KIND)

Company Cities Service Oil Company  
Address Box 873, Charleston, W. Va. 25323  
Farm Lewis Maxwell Acres 1562  
Location (waters) Brushy Fork  
Well No. "B" 24, GW-1534 Elev. 1017.38'  
District West Union County Doddridge  
The surface of this well is owned by R. D. Pierce  
810 Monroe St. Address Annapolis, Md.  
Apt. #108  
Mineral rights are owned by Mrs. Grace Gaylord, et al  
(For further add. contact C. S. Oil Co)  
Address \_\_\_\_\_  
Drilling commenced 3-29-65  
Drilling completed 4-27-65  
Date Shot not shot From \_\_\_\_\_ To \_\_\_\_\_  
With \_\_\_\_\_  
Open Flow /10ths Water in \_\_\_\_\_ Inch  
/10ths Merc. in \_\_\_\_\_ Inch  
Volume 63,000 Cu. Ft.  
Rock Pressure 235 lbs. 64 hrs.  
Oil \_\_\_\_\_ bbls., 1st 24 hrs.  
WELL ACIDIZED not acidized  
WELL FRACTURED see attached sheet

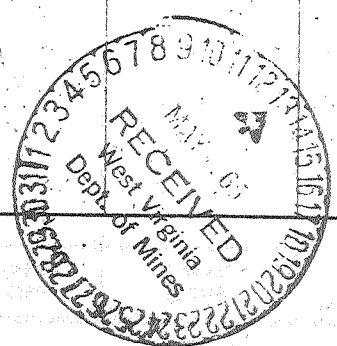
Casing and Tubing	Used in Drilling	Left in Well	Packers
Size			
16			Kind of Packer
13 3/8" 48#	18'	pulled	none
10 3/4" 32#	56'	56'	Size of
8 1/2" 25.55#	673'	673'	
7" 23#	1096'	pulled	Depth set
4 1/2" 9.5#	1981'	1981'	
			Perf. top
			Perf. bottom
			Perf. top
			Perf. bottom

CASING CEMENTED SIZE No. Ft. \_\_\_\_\_ Date \_\_\_\_\_  
see reverse side  
COAL WAS ENCOUNTERED AT none FEET \_\_\_\_\_ INCHES  
FEET \_\_\_\_\_ INCHES FEET \_\_\_\_\_ INCHES  
FEET \_\_\_\_\_ INCHES FEET \_\_\_\_\_ INCHES

RESULT AFTER TREATMENT 20/10 M, 3" = 1,565 MCF  
ROCK PRESSURE AFTER TREATMENT 120 hours 550# -- 144 hours 550#  
Fresh Water 135' Feet Salt Water \_\_\_\_\_ Feet

Formation	Color	Hard or Soft	Top	Bottom	Oil, Gas or Water	Depth	Remarks
Red Clay			0	18			
Sand			18	25			
Red Rock			25	52			
Lime			52	62			
Red Rock			62	122			
Sand			122	170	F. water	135'	1/2-10" blr/hr.
Slate and Shells			170	180			
Red Rock			180	205			
Slate and Shells			205	215			
Sand			215	235			
Red Rock			235	288			
Sand			288	317			
Slate			317	337			
Sand			337	350			
Slate			350	427			
Lime			427	447			
Slate and Red Rock			447	475			
Broken Lime			475	500			
Slate and Shells			500	545			
Pink Rock			545	575			
Slate and Shells			575	648			
Lime			648	670			
Slate and Pink Rock			670	708			
Lime			708	750			
Slate and Shells			750	780			
Pink Rock			780	800			
Slate and Shells			800	820			

(over)



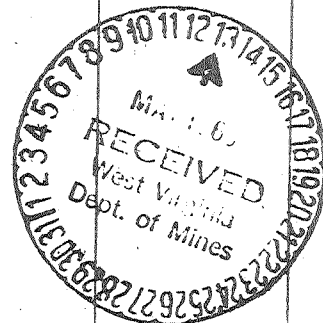
Formation	Color	Hard or Soft	Top /0	Bottom	Oil, Gas or Water	Depth Found	Remarks
Gritty Lime			820	830			
Sand			830	858			
Slate and Shells			858	900			
Sand			900	920			
Slate and Shells			920	970			
Sand			970	1025			
Slate and Shells			1025	1080			
Lime			1080	1090			
Sand			1090	1115			
Lime			1115	1130			
Sand			1130	1157			
Slate			1157	1160			
Sand			1160	1215			
Slate and Shells			1215	1227			
Sand			1227	1237			
Slate and Shells			1237	1275			
Sand			1275	1335			
Slate and Shells			1335	1380			
Sand			1380	1410			
Slate and Shells			1410	1550			
Gritty Lime			1550	1580			
Slate and Shells			1580	1591			
Sand			1591	1605			
Slate and Shells			1605	1688			
Sand			1688	1712			
Break			1712	1719			
Lime			1719	1729			
Blue Monday Sand			1729	1759	Gas	1729-36'	67 MCF
Pencil Cave			1759	1760	Oil	1770'	show
Big Lime			1760	1845			
Keener Sand			1845	1855			
Big Injun			1855	1885	Gas	1858-85'	incr. to 75M
Slate			1885	1890	Oil	1854-57'	light show
Sand			1890	1924	Gas	1915-24'	incr. to 94M
Slate			1924	1969			
Total depth-----				1969' Schl. Meas.			
Schlumberger Log shows:							
Blue Monday			1730	1760			
Big Lime			1764	1830			
Big Injun			1830	1926			
Casing Record							
4-6-65	Set 8-5/8" 28# J-55 casing with shoe at 668'DLM in 20' red mud-not cemented.						
4-10-65	Set 7" 23# J-55 casing with shoe at 1087'DLM in 20' red mud-R/L collar at 987' - not cemented.						
4-27-65	Set 4-1/2" 9.5# J-55 casing at 1969' with shoe. Circulated 70 bbls. mud and cemented with 40 sacks regular cement. Pumped plug to 1937', R/L nipple at 1457'. Centralizers at 1937', 1841; and 1778'. Used 2% Calcium and friction reducer in cementing.						
See additional information on attached sheet.							

Date..... 19.....

APPROVED....., Owner

By..... (Title)

Formation	Color	Hard or Soft	Top 10A	Bottom	Oil, Gas or Water	Depth Found	Remarks
Additional information on GW-1534, Lewis Maxwell "B" 24							
4-27-65							Ran Schlumberger Logs: Gamma Ray, Temperature, Caliper, Density and Induction. Schlumberger's total depth 1,969'.
4-30-65							Perforated Big Injun Sand 1860-80', 1885-87', 1898-1900', 1909-11', 1919-22' with 2 jets per foot. Swabbed and bailed dry. Gas gauging 63 MCF - one hour pickup 105#.
5-3-65							<u>FRACTURED THE BIG INJUN</u>  64 hour rock pressure 235#. Fraced the Big Injun Sand with 500 gallons MCA and 2,000 gallons 15% acid. Maximum pressure 1,300#. Used 35 ball sealers. Pumped in 45,000# 20-40 sand and 26,000 gallons water with 130,000 cu. ft. of Nitrogen, 600# of fluid loss additive and 35 gallons of More-flo. Maximum treating pressure 2,750#. Minimum treating pressure 2,575#. Average injection rate 32-1/2 bbls/minute. Dropped in 35 perf balls one half way through Frac Treatment. Pressure raised 50#. Used 648 bbls. of treating and load water. Flowed well back - gas too wet to gauge - estimated making 800 MCF.
Final open flow 5-4-65 20/10 M. 3" = 1,565 MCF							



Date May 12, 19 65

APPROVED Cities Service Oil Company, Owner

By L. D. Todd, District Sup't  
(Title)