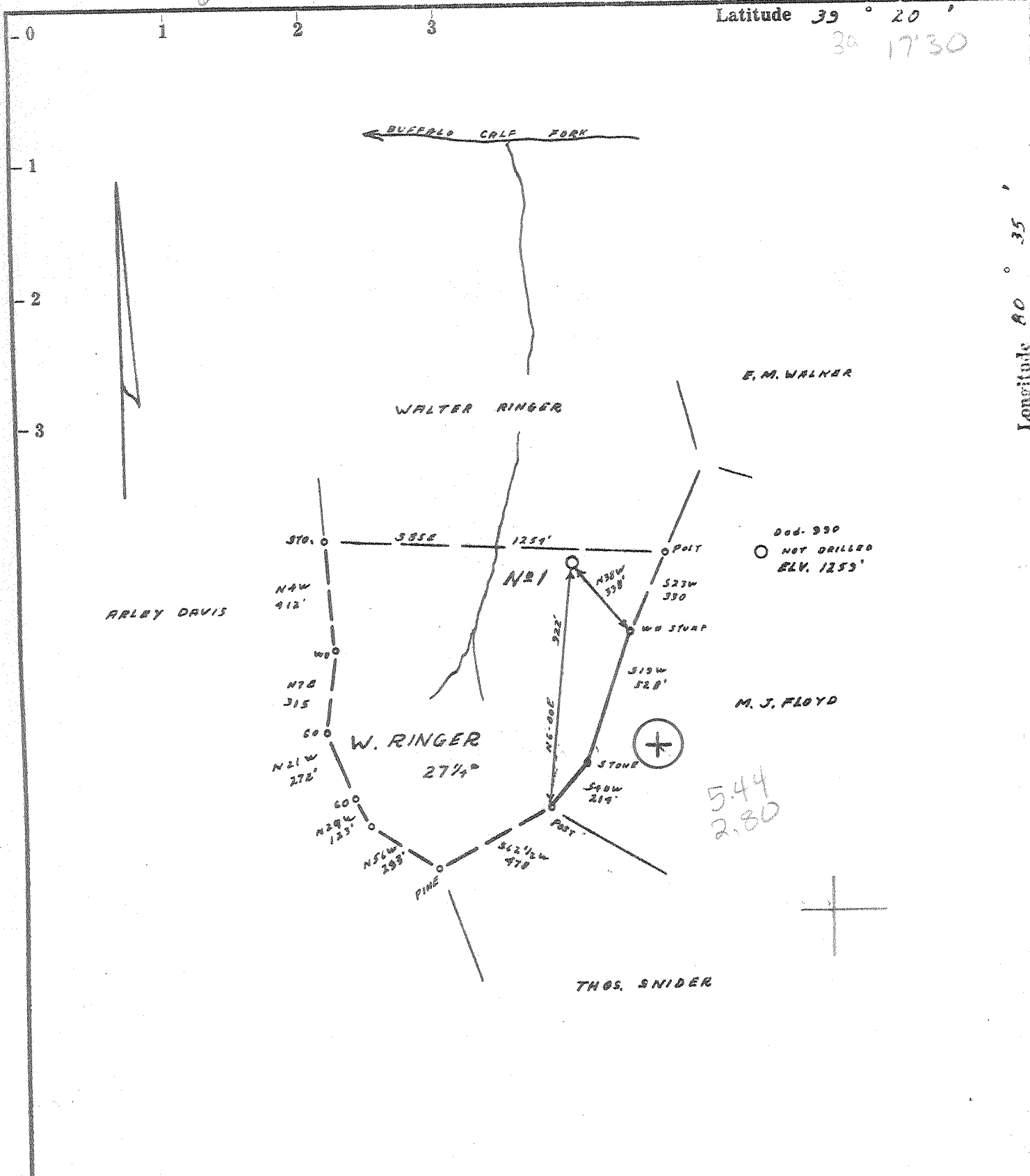


V29/74CEN

Latitude 39° 20'

38 17'30"

Longitude 80° 35' 00.32" 80"



- Fracture.....
- Redrill.....
- New Location
- Drill Deeper.....
- Abandonment.....

Source of Elevation Dod-990 ELV. 1259'  
 I, the undersigned, hereby certify that this map is correct to the best of my knowledge and belief and shows all the information required by paragraph 6 of the rules and regulations of the oil and gas section of the mining laws of West Virginia.  
 Minimum accuracy, one part in 200

Waco Oil and Gas Company WEBBER  
 Address Box 4 Morgantown, W. VA. 26351  
 Farm WALTER RINGER  
 Tract \_\_\_\_\_ Acres 27 1/4 Lease No. \_\_\_\_\_  
 Well (Farm) No. B-1 Serial No. \_\_\_\_\_  
 Elevation (Spirit Level) 1190'  
 Quadrangle CENTERPOINT ~~SMITHBERG~~ SC  
 County DODDRIDGE District GREENBRIER  
 Engineer James J. Jeffers  
 Engineer's Registration No. 1081  
 File No. 209/110 Drawing No. \_\_\_\_\_  
 Date 7-3-65 Scale 1" = 500'

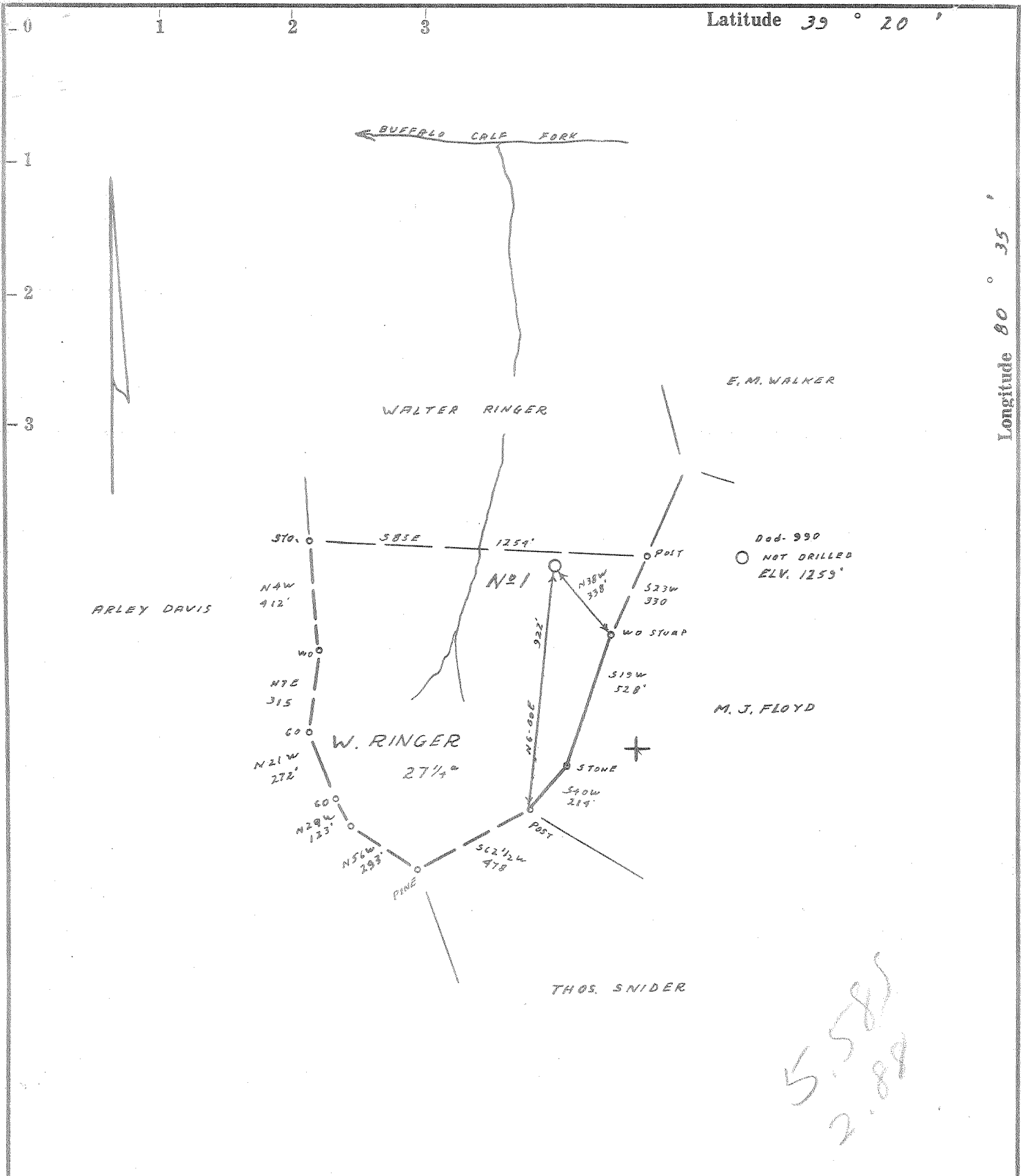
STATE OF WEST VIRGINIA  
 DEPARTMENT OF MINES  
 OIL AND GAS DIVISION  
 CHARLESTON

**WELL LOCATION MAP**  
 FILE NO. DOD-1242-P

Smithberg  
 +- Denotes location of well on United States Topographic Maps, scale 1 to 62,500, latitude and longitude lines being represented by border lines as shown.  
 — Denotes one inch spaces on border line of original tracing. 47-017

MM

P



5585  
2.88

- Fracture....
- Redrill.....
- New Location.
- Drill Deeper.....
- Abandonment.....

Source of Elevation Ded-990 ELV. 1259'

I, the undersigned, hereby certify that this map is correct to the best of my knowledge and belief and shows all the information required by paragraph 6 of the rules and regulations of the oil and gas section of the mining laws of West Virginia.

Minimum accuracy, one part in 200

Company J. E. WEBBER

Address MORGANSVILLE, W. VA.

Farm WALTER RINGER

Tract \_\_\_\_\_ Acres 27 1/4 Lease No. \_\_\_\_\_

Well (Farm) No. B-1 Serial No. \_\_\_\_\_

Elevation (Spirit Level) 1140'

Quadrangle CENTERPOINT SW 1/4 SC

County DODDRIDGE District GREENBRIER

Engineer James Jeffers

Engineer's Registration No. 1084

File No. 209/40 Drawing No. \_\_\_\_\_

Date 4-3-65 Scale 1" = 500'

STATE OF WEST VIRGINIA  
DEPARTMENT OF MINES  
OIL AND GAS DIVISION  
CHARLESTON

**WELL LOCATION MAP**  
FILE NO. DOD-1242

+ Denotes location of well on United States Topographic Maps, scale 1 to 62,500, latitude and longitude lines being represented by border lines as shown.

— Denotes one inch spaces on border line of original tracing.

6-6 94



STATE OF WEST VIRGINIA  
DEPARTMENT OF MINES  
OIL AND GAS DIVISION

Rotary   
Spudder   
Cable Tools   
Storage

Quadrangle Centerpoint SW 41

WELL RECORD 7

Permit No. DOD-1242

Oil or Gas Well GAS  
(KIND)

Company Webber Associates  
Address Morgansville, W. Va., Rt. #1  
Farm Walter Ringer Acres 27 1/4  
Location (waters) Buffalo Calf or Greenbrier Ck.  
Well No. B-1 ✓ Elev. 1140  
District Greenbrier County Doddridge  
The surface of tract is owned in fee by Walter Ringer  
Address Salem, W. Va. Rt. #1  
Mineral rights are owned by Walter Ringer, Etal  
Address Salem, W. Va. Rt. #1  
Drilling commenced May 24, 1965  
Drilling completed June 18, 1965  
Date Shot From To  
With

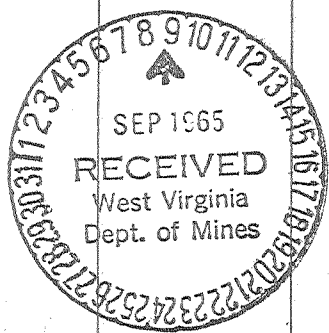
Casing and Tubing	Used in Drilling	Left in Well	Packers
Size			Kind of Packer
16.	7 1/2	7 1/2	
13.			
10.	500		Size of
8 3/4	1403	1403	
6 3/4			Depth set
5 3/16			
4 1/2	2390	2390	
3.			Perf. top
2.		2250	Perf. bottom
Liners Used			Perf. top
			Perf. bottom

Open Flow /10ths Water in. Inch  
/10ths Merc. in. Inch  
Volume No Natural Cu. Ft.  
Rock Pressure lbs. hrs.  
Oil bbls., 1st 24 hrs.  
WELL ACIDIZED (DETAILS)  
WELL FRACTURED (DETAILS) 1100 Bbls. 38,000 lbs. Sand

Attach copy of cementing record.  
CASING CEMENTED 6 1/2 SIZE 238 1/2 No. Ft. 6/22/65 Date  
Amount of cement used (bags) 55  
Name of Service Co. Dowell  
COAL WAS ENCOUNTERED AT 89 1/2 - 90 1/2 INCHES  
FEET INCHES FEET INCHES  
FEET INCHES FEET INCHES

RESULT AFTER TREATMENT (Initial open Flow or bbls.) 600,000 cu. ft. per day  
ROCK PRESSURE AFTER TREATMENT 920 lbs. HOURS 48 hrs.  
Fresh Water Feet Salt Water Maxon Feet  
Producing Sand 2062-2123 Depth 2390

Formation	Color	Hard or Soft	Top	Bottom	Oil, Gas or Water	Depth	Remarks
Red Clay			0	30			
Sand			30	90			
Slate			90	130			
Red Rock			130	135			
Lime			135	150			
Slate			150	155			
Red Rock			155	165			
Slate Shells			165	200			
Red Rock			200	225			
Slate Shells			225	250			
Sand			250	290			
Slate			290	340			
✓ Coal			340	342	(Surface Coal)		
Slate			342	375			
Lime			375	395			
Slate			395	410			
Red Rock			410	420			
Lime			420	435			
Slate Shells			435	445			
Red Rock			445	452			
Lime			452	464			
Red Rock			464	480			
Slate Shells			480	503			
Sand			503	525	Water		
Slate			525	547			
Sand			547	583			
Slate			583	620			
Red Rock			620	640			
Slate Shells			640	650			



Formation	Color	Hard or Soft	Top	Bottom 7	Oil, Gas or Water	Depth Found	Remarks
Red Rock			650	693			
Lime			693	714			
Red Rock			714	720			
Slate Shells			720	808			
Sand			808	829			
Slate			829	898			
Coal			898	906	Coal	898-906	Pittsburgh Coal
Slate			906	948			
Sand			948	963			
Lime			963	994			
Red Rock			994	1042			
Slate			1042	1107			
Red Rock			1107	1128			
Lime		Hard	1128	1158			
Slate		Soft	1158	1208			
Slate	Black		1208	1240			
Red Rock			1240	1254			
Slate Shells			1254	1285			
Lime			1285	1302			
Slate	Black		1302	1328			
Red Rock			1328	1355			
Slate Shells			1355	1378			
Slate			1378	1385			
Rock	Pink		1385	1398			
Lime			1398	1406			
Slate			1406	1430			
Green Cave			1430	1450			
Slate Shells			1450	1616			
Sand			1616	1622			
Slate			1622	1636			
Sand			1636	1650			
Slate			1650	1678			
Sand			1678	1714			
Slate			1714	1773			
Sand			1773	1860			
Slate			1860	1940			
Sand			1940	1960			
Slate			1960	1970			
Sand			1970	2005			
Slate			2005	2130			
Red Rock			2130	2145			
Slate			2145	2159			
Lime			2159	2193			
Slate			2193	2210			
Sand			2210	2220			
Pencil Cave			2220	2225			
Big Lime			2225	2304			
Sand			2304	2364	Gas	2345-50	
Slate			2364	2390	Oil	2350-56	
Bottom Hole				2390			

Date \_\_\_\_\_, 19\_\_\_\_

APPROVED \_\_\_\_\_, Owner

By \_\_\_\_\_ (Title)