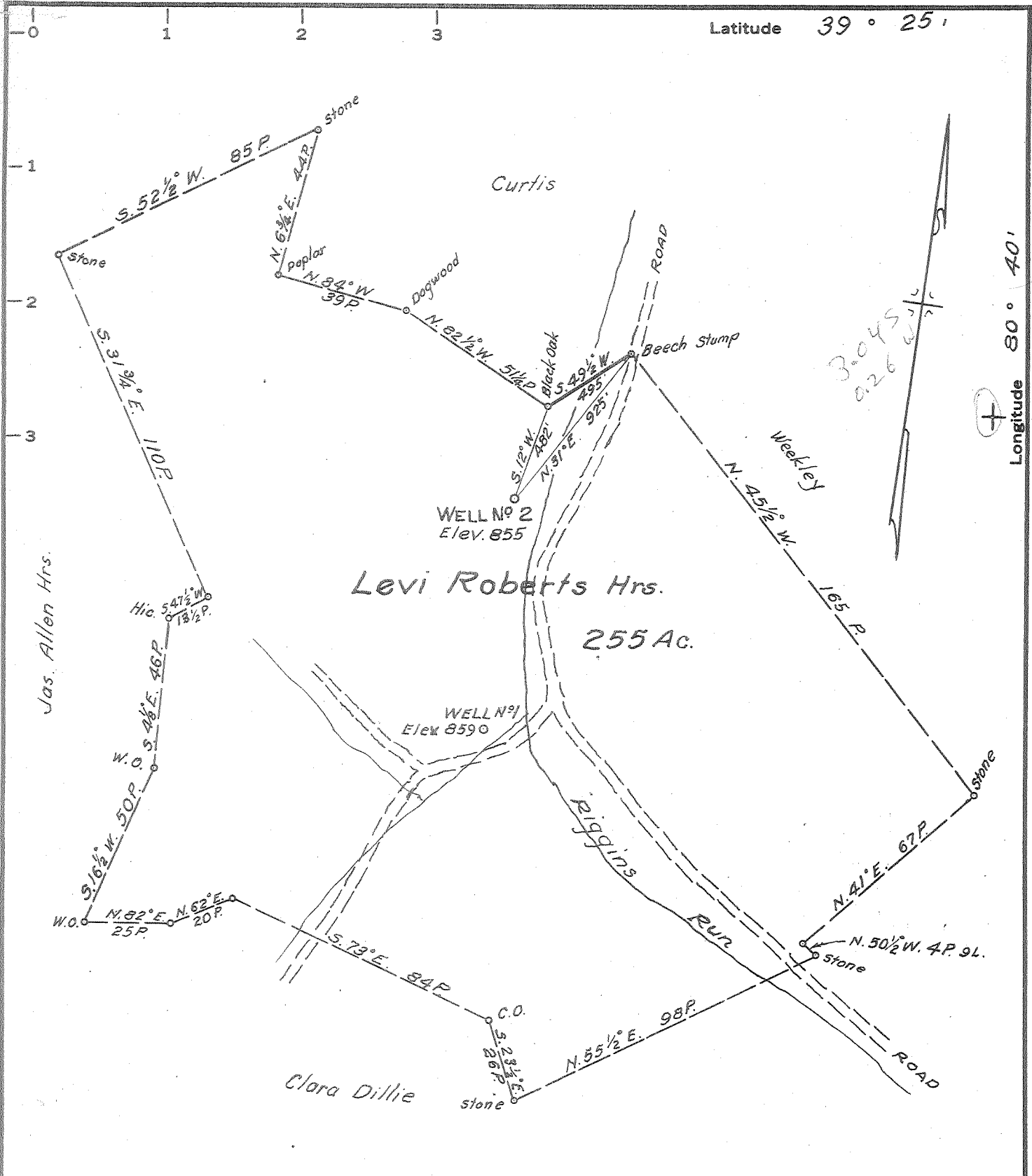


m P



MINIMUM ERROR OF CLOSURE 1/500
 SOURCE OF ELEVATION Well No. 1, this farm (Levi Roberts Hrs) Elev. 859

New Location
 Drill Deeper
 Abandonment

"I, THE UNDERSIGNED, HEREBY CERTIFY THAT THIS MAP IS CORRECT TO THE BEST OF MY KNOWLEDGE AND BELIEF AND SHOWS ALL THE INFORMATION REQUIRED BY PARAGRAPH 6 OF THE RULES AND REGULATIONS OF THE OIL AND GAS SECTION OF THE MINING LAWS OF WEST VIRGINIA."

Company Neds Run Oil & Gas Co. C.C. Cottrill, Agt.
 Address Pennsboro, W. Va.
 Farm Levi Roberts Hrs.
 Tract 1 Acres 255 Lease No. _____
 Well (Farm) No. (2) Serial No. _____
 Elevation (Spirit Level) 855
 Quadrangle Centerpoint - WC
 County Doddridge District M^cClellan
 Engineer Parker E. Peters
 Engineer's Registration No. 485
 File No. _____ Drawing No. _____
 Date July 29, 1965 Scale 1" = 40P.

STATE OF WEST VIRGINIA
 DEPARTMENT OF MINES
 OIL AND GAS DIVISION
 CHARLESTON
 WELL LOCATION MAP
 FILE NO. Dod-1302

+ Denotes location of well on United States Topographic Maps, scale 1 to 62,500, latitude and longitude lines being represented by border lines as shown.
 — Denotes one inch spaces on border line of original tracing.

6698



STATE OF WEST VIRGINIA
DEPARTMENT OF MINES
OIL AND GAS DIVISION 5

Rotary
Spudder
Cable Tools
Storage

Miss A. Kelley
1-31-66

Quadrangle _____

Permit No. DOD-1302

WELL RECORD

Oil or Gas Well Both
(KIND)

Company Ned's Run Oil And Gas Co
Address Star Route
Farm Levi Roberts Hrs. Acres 256
Location (waters) Riggins Run
Well No. 2 Elev. 855
District McClellan County Doddridge
The surface of tract is owned in fee by Arby Glaspell
Address Star Rt.
Mineral rights are owned by Levi Roberts Hrs.
Israel Roberts Address Farmington W. Va.
Drilling commenced November 4, 1965
Drilling completed 12-9-65
Date Shot _____ From _____ To _____
With _____
Open Flow _____ /10ths Water in _____ Inch
_____ /10ths Merc. in _____ Inch
Volume _____ Cu. Ft.
Rock Pressure 400 lbs. 24 hrs.
Oil (25) bbls., 1st 24 hrs.
WELL ACIDIZED (DETAILS) _____
WELL FRACTURED (DETAILS) 100 Bbls. Detergent 700 BBLs. Water 4 Ton Sand
RESULT AFTER TREATMENT (Initial open Flow or bbls.) 25 BBLs
ROCK PRESSURE AFTER TREATMENT 400 LBS. 24 Hrs. 100 MCF gas
Fresh Water _____ Feet Salt Water _____ Feet
Producing Sand Big Injun Depth 2027 Ft.

Casing and Tubing	Used in Drilling	Left in Well	Packers
Size			Kind of Packer
16			Size of Depth set Perf. top Perf. bottom
13 17 in.		None	
10			
8 1/4 1093		None	
6 3/4			
5 3/16		2037	
Liners Used			Perf. top <u>1925-4</u> Perf. bottom <u>1943-20</u> Perf. top _____ Perf. bottom _____

Attach copy of cementing record.
CASING CEMENTED _____ SIZE 4 1/2 No. Ft. 2037 Date _____
Amount of cement used (bags) 12.5
Name of Service Co. DOWELL
COAL WAS ENCOUNTERED AT 1/2 FEET 40 FEET 10 INCHES
FEET INCHES FEET INCHES
FEET INCHES FEET INCHES

Formation	Color	Hard or Soft	Top	Bottom	Oil, Gas or Water	Depth	Remarks
Top Soil			0	3			
Sand			3	12			
Creek Bed			12	17			
Slate			17	30			
Red Rock			30	40			
Slate			40	55			
Red Rock			55	65			
Slate			65	80			
Red Rock			80	90			
Slate			90	190			
Sand			190	230			
Slate L			230	270			
Lime			270	280			
Red Rock			280	290			
Slate and Red Rock	Red Rock		290	315			
Lime			315	360			
Slate			360	385			
Sand			385	395			
Slate			395	410			
Sand			410	435			
Slate			435	495	Water	495	
Lime			495	508			
Slate			508	540			
Sand			540	590			
Slate			590	620			
Pink Rock			620	628			
Slate and Rock	Rock		628	650			
Slate			650	695			
Pink Rock			695	710			



Formation	Color	Hard or Soft	Top 5	Bottom	Oil, Gas or Water	Depth Found	Remarks
Lime			710	715			
Slate			715	720			
Red Rock			720	765			
Slate Shells			765	825			
Red Rock			825	850			
Slate and Rock			850	998			
Sand			998	1008			
Slate			1008	1085			
Sand			1085	1145			
Slate and Shells			1145	1220			
Sand			1220	1240			
Slate			1240	1310			
Sand			1310	1325			
Slate			1325	1365			
Sand			1365	1480	Water	1430	
Slate and Sand			1480	1505			
Sand			1505	1555			
Slate and Shells			1555	1645			
Sand			1645	1740	Oil		
Slate			1740	1758			
Pink Rock			1758	1770			
Slate			1770	1789			
Lime			1789	1804			
Slate			1804	1819			
Blue Monday			1819	1830			
Break			1830	1832			
Big Lime			1832	1914			
Sand			1914	2028	Gas, Oil	1925-41	
Slate			2028		Gas	1993-2003	
Total Depth, 2040							

Date Jan 25, 1966

APPROVED W.D.S. Ryan Oil & Gas, Owner

By Orin D. Sease Agent

(Title)