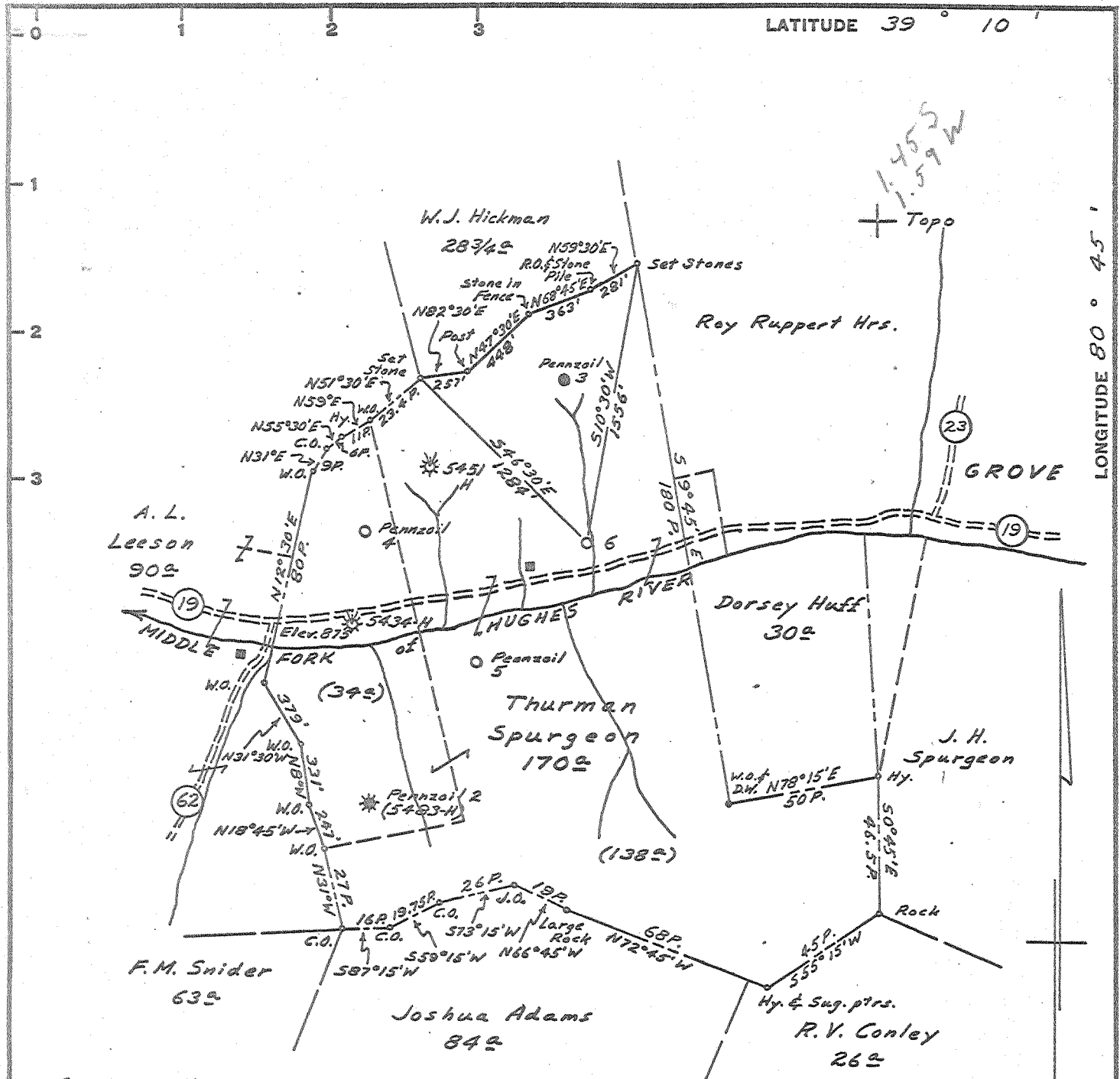


W 9-7-65



Surface: Nannie Spurgeon
 Auburn, West Virginia
 Coal: No Commercial Coal

Minimum Error of Closure 1' in 200'
 Source of Elevation H.N.G. Co. Well #5434 H (Abd. Permit Dod-1052A)
Elev. 875' ground.

- Fracture.....
- New Location.....
- Drill Deeper.....
- Abandonment.....

I, the undersigned, hereby certify that this map is correct to the best of my knowledge and belief and shows all the information required by paragraph 6 of the rules and regulations of the oil and gas section of the mining laws of West Virginia.

Signed: A.C. Hillert
 Map No. 647 Squares: N S 21 E W 9-10

| | |
|-----------------------------|-------------------------------------|
| Company | PENNZOIL COMPANY |
| Address | P. O. BOX 1588, PARKERSBURG, W. VA. |
| Farm | Thurman Spurgeon |
| Tract | Acres 170 Lease No. 71767 |
| Well (Farm) No. | 6 Serial No. |
| Elevation (Spirit Level) | 893.08' ground |
| Quadrangle | HOLBROOK E L |
| County | DODDRIDGE District COVE |
| Engineer | A.C. Hillert |
| Engineer's Registration No. | 2534 |
| File No. | 1416 Drawing No. |
| Date | Sept. 2, 1965 Scale 1" = 300' |

STATE OF WEST VIRGINIA
 DEPARTMENT OF MINES
 OIL AND GAS DIVISION
 CHARLESTON

WELL LOCATION MAP

FILE NO. Dod-1305

+ Denotes location of well on United States Topographic Maps, scale 1 to 62,500, latitude and longitude lines being represented by border lines as shown.

■ Denotes one inch spaces on border line of original tracing.



STATE OF WEST VIRGINIA
DEPARTMENT OF MINES
OIL AND GAS DIVISION

Rotary
Spudder
Cable Tools
Storage
Oil or Gas Well *Dry*
(KIND)

Quadrangle HOLBROOK
Permit No. DOD-1305

WELL RECORD

Company PENNZOIL COMPANY
Address P. O. Box 1588, Parkersburg, W. Va.
Farm Thurman Spurgeon Acres 170
Location (waters) _____
Well No. 6 Elev. 893.08'
District Cove County Doddridge
The surface of tract is owned in fee by Nannie Spurgeon
Address Auburn, W. Va.
Mineral rights are owned by LaVaughn Wolverton, et al
Address West Union, W. Va.

Drilling commenced October 10, 1965
Drilling completed October 18, 1965
Date Shot _____ From _____ To _____
With _____
Open Flow _____ 10ths Water in _____ Inch
_____ 10ths Merc. in _____ Inch
Volume _____ Cu. Ft.
Rock Pressure _____ lbs. _____ hrs.
Oil Show _____ bbls., 1st 24 hrs.
WELL ACIDIZED _____
WELL FRACTURED _____

| Casing and Tubing | Used in Drilling | Left in Well | Packers |
|-------------------|------------------|--------------|--------------------|
| Size | | | Kind of Packer |
| 16 | | | <u>Steel Shoe</u> |
| 13 | | | Size of _____ |
| 10 | <u>8-5/8"</u> | <u>225'</u> | <u>8-5/8"</u> |
| 6 3/4 | | | Depth set |
| 5 3/16 | | | <u>225'</u> |
| 3 | | | Perf. top _____ |
| 2 | | | Perf. bottom _____ |
| Liners Used | | | Perf. top _____ |
| | | | Perf. bottom _____ |

CASING CEMENTED 8-5/8" SIZE 225' No. Ft. 10-11-65 Date

COAL WAS ENCOUNTERED AT _____ FEET _____ INCHES
_____ FEET _____ INCHES _____ FEET _____ INCHES
_____ FEET _____ INCHES _____ FEET _____ INCHES

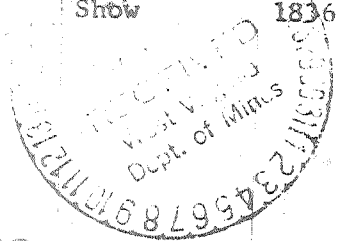
RESULT AFTER TREATMENT WILL PLUG AND ABANDON

ROCK PRESSURE AFTER TREATMENT

Fresh Water _____ Feet Salt Water _____ Feet

| Formation | Color | Hard or Soft | Top | Bottom | Oil, Gas or Water | Depth | Remarks |
|-------------------|-------|--------------|------|--------|-------------------|-------|-----------|
| oil & Shale | | | 0 | 75 | | | |
| and | | | 75 | 95 | | | |
| ilts | | | 95 | 100 | | | |
| and | | | 100 | 250 | | | |
| shale | | | 250 | 325 | | | |
| ilts & Sand | | | 325 | 400 | | | |
| ilts & Shale | | | 400 | 690 | | | |
| shale | | | 690 | 730 | | | |
| ilts & Sand | | | 730 | 835 | | | |
| shale & Silts | | | 835 | 1102 | | | |
| and | | | 1102 | 1125 | | | |
| shale | | | 1125 | 1305 | | | |
| and | | | 1305 | 1435 | | | |
| shale | | | 1435 | 1510 | | | |
| and | | | 1510 | 1565 | | | |
| black Shale | | | 1565 | 1666 | | | |
| little Lime | | | 1666 | 1688 | | | |
| shale | | | 1688 | 1695 | | | |
| ue Monday | | | 1695 | 1710 | Oil | Show | 1695-1706 |
| shale & Limestone | | | 1710 | 1712 | | | |
| g Lime | | | 1712 | 1769 | Oil | Show | 1714-1720 |
| g Injun | | | 1769 | 1848 | Oil | Show | 1836-1842 |
| ey Shale | | | 1848 | 1900 | | | |
| Total Depth | | | | 1900' | | | |

cored well - Injun - 1809 - 1851



(over)

UNGE S received 7/12/94 kla