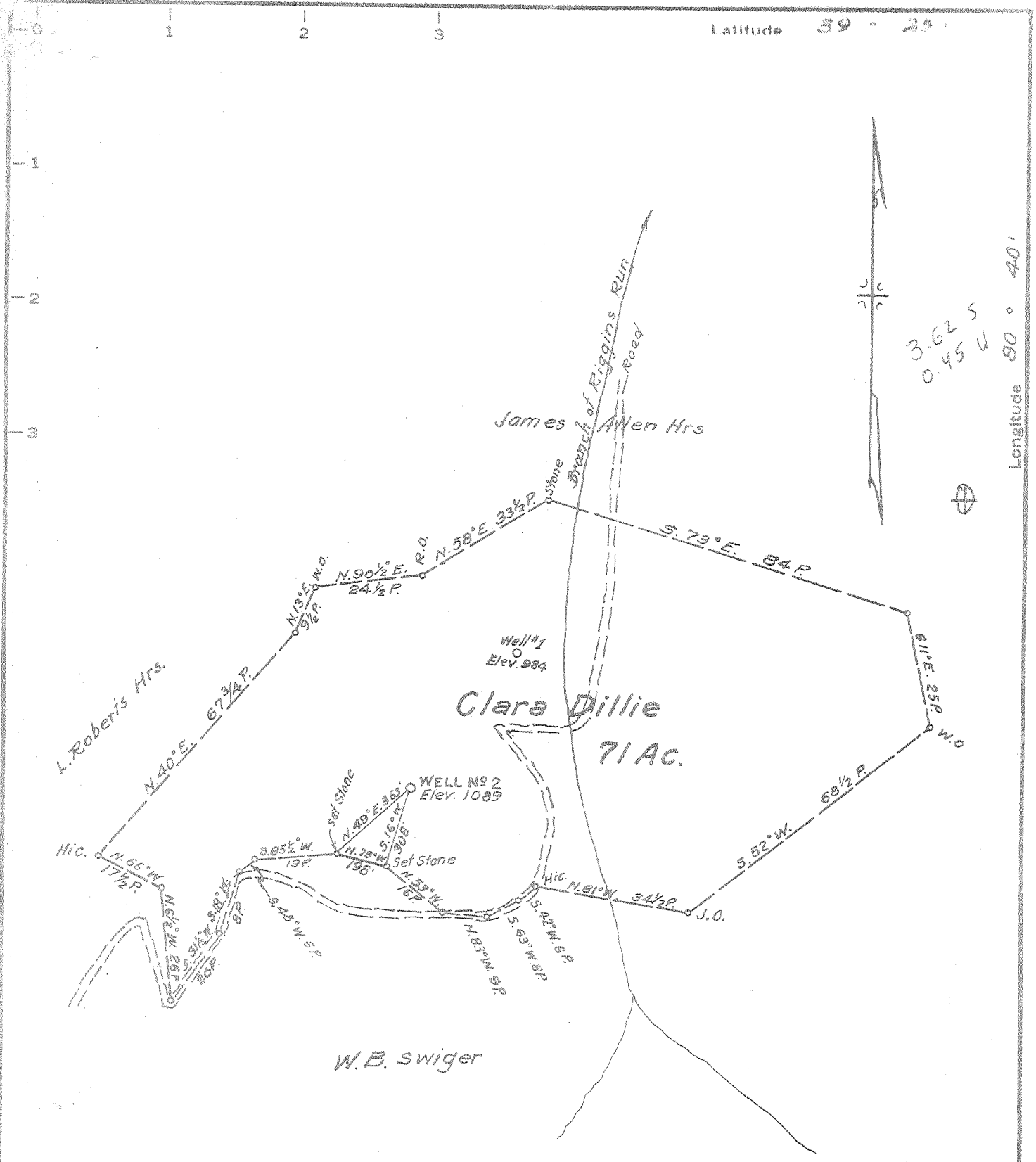


M P



Latitude 39° 25'

Longitude 80° 40'

3.62 S  
0.45 W

MINIMUM ERROR OF CLOSURE 1/300

SOURCE OF ELEVATION Well N<sup>o</sup> 1, this farm (Clara Dillie) Elev. 984

- New Location
- Drill Deeper
- Abandonment

"I, THE UNDERSIGNED, HEREBY CERTIFY THAT THIS MAP IS CORRECT TO THE BEST OF MY KNOWLEDGE AND BELIEF AND SHOWS ALL THE INFORMATION REQUIRED BY PARAGRAPH 6 OF THE RULES AND REGULATIONS OF THE OIL AND GAS SECTION OF THE MINING LAWS OF WEST VIRGINIA."

Company Clara Dillie Gas & Oil Lease, C.F. Burge, Agt  
 Address 611 High St, Waynesburg, Pa  
 Farm Clara Dillie  
 Tract 1 Acres 71 Lease No. \_\_\_\_\_  
 Well (Farm) No. (2) Serial No. \_\_\_\_\_  
 Elevation (Spirit Level) 1089  
 Quadrangle Centerpoint - WC  
 County Doddridge District McClellan  
 Engineer Parker E. Peters  
 Engineer's Registration No. 485  
 File No. \_\_\_\_\_ Drawing No. \_\_\_\_\_  
 Date Sept. 14, 1965 Scale 1" = 300'

STATE OF WEST VIRGINIA  
 DEPARTMENT OF MINES  
 OIL AND GAS DIVISION  
 CHARLESTON  
 WELL LOCATION MAP  
 FILE NO. 000-1326

+ Denotes location of well on United States Topographic Maps, scale 1 to 62,500, latitude and longitude lines being represented by border lines as shown.  
 — Denotes one inch spaces on border line of original tracing.



STATE OF WEST VIRGINIA  
DEPARTMENT OF MINES  
OIL AND GAS DIVISION 3

- Rotary
- Spudder
- Cable Tools
- Storage

Oil or Gas Well COMBINATION  
(KIND)

*For packing  
8-17-66  
UB*

Quadrangle \_\_\_\_\_  
Permit No. 1326 - Dod.

WELL RECORD

Company	<u>Clara Dilly Well #2</u>	Casing and tubing	Used in Drilling	Left in Well	Packers
Address	<u>c/o C. E. Burge E. High St., Waynesburg, Pa.</u>	Size			
Farm	<u>Clara Dilly</u> Acres <u>71</u>	16			Kind of Packer
Location (waters)	<u>Raggans Run</u>	13			Size of
Well No.	<u>2</u> Elev <u>1089</u>	10			Depth set
District	<u>McClellan</u> County <u>Doddridge</u>	8 1/4			Perf. top <u>2100</u>
The surface of tract is owned in fee by	<u>Clara Dilly</u>	6 5/8			Perf. bottom <u>2120</u>
Address	<u>Pennsboro, W. Va.</u>	5 3/16			Perf. top <u>2200</u>
Mineral rights are owned by	<u>Unknown</u>	4 1/2		<u>2235</u>	Perf. bottom
Address	_____	3			
Drilling commenced	<u>Sept. 23, 1965</u>	2			
Drilling completed	<u>Oct. 20, 1965</u>	Liners Used			
Date Shot	<u>Oct. 27, 1965</u> From _____ To _____				
With	_____				

Attach copy of cementing record.

Open Flow /10ths Water in \_\_\_\_\_ Inch  
/10ths Merc. in \_\_\_\_\_ Inch

Volume \_\_\_\_\_ Cu. Ft.

Rock Pressure 240 lbs. 24 HR hrs.

Oil 1 BL DAY bbls., 1st 24 hrs.

WELL ACIDIZED (DETAILS) \_\_\_\_\_

WELL FRACTURED (DETAILS) 800 BL WATER

RESULT AFTER TREATMENT (Initial open Flow or bbls.) 250,000 CU FT

ROCK PRESSURE AFTER TREATMENT 240 HOURS 24 HR

Fresh Water NAHE Feet Salt Water NAHE Feet

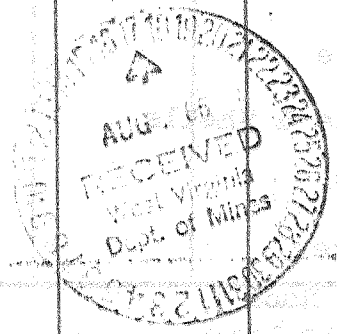
Producing Sand P.M.T.U.N. Depth \_\_\_\_\_

CASING CEMENTED 4 1/2 SIZE No. Ft. \_\_\_\_\_ Date \_\_\_\_\_  
Amount of cement used (bags) 95 sacks

Name of Service Co. Dowell Chemical

COAL WAS ENCOUNTERED AT None FEET \_\_\_\_\_ INCHES \_\_\_\_\_  
FEET \_\_\_\_\_ INCHES FEET \_\_\_\_\_ INCHES  
FEET \_\_\_\_\_ INCHES FEET \_\_\_\_\_ INCHES

Formation	Color	Hard or Soft	Top	Bottom	Oil, Gas or Water	Depth	Remarks
Top Soil			0	3			
Red Rock			3	10			
Yellow Clay			10	25			
Rock & Crevice			25	35			
Slate & R.R.			35	60			
Red Rock			60	80			
Sand			80	95			
Slate			95	290			
Red Rock			290	320			
Slate & Shells			320	525			
Pink Lime			525	575			
Slate & Shells			575	590			



Formation	Color	Hard or Soft	Top 3	Bottom	Oil, Gas or Water	Depth Found	Remarks
Sand			590	620			
Slate & Shells			620	195			
Lime Pitt			695	712			
Slate & Shells			712	750			
Sand			750	785			
Slate			785	835			
Pine Rock			835	845			
Slate			845	875			
Sand			875	888			
Slate			888	910			
Pink Rock			910	915			
Slate			915	937			
Sand			937	945			
Red Rock			945	980			
Slate			980	1050			
Red Rock			1050	1065			
Slate			1065	1130			
Sand			1130	1150			
Slate			1150	1320			
Sand			1320	1360			
Slate			1360	1375			
Sand			1375	1435			
Slate			1435	1445			
Sand			1445	1465			
Slate & Sand			1465	1520			
Sand			1520	1600			
Sand			1600	1690			
Slate & Shells			1690	1705			
Sand			1705	1740			
Slate			1740	1800			
Slate & Shells			1800	1825			
Sand			1825	1925			
Slate			1925	1945			
Pink Rock			1945	1985			
Little Lime			1985	2000			
Slate			2000	2009			
Blue Munday			2009	2083			
Big Lime			2033	2112			
Sand Big Injun			2112	2220			
Shale			2220	2235			

Date \_\_\_\_\_, 19\_\_\_\_

APPROVED \_\_\_\_\_, Owner

By \_\_\_\_\_

(Title)