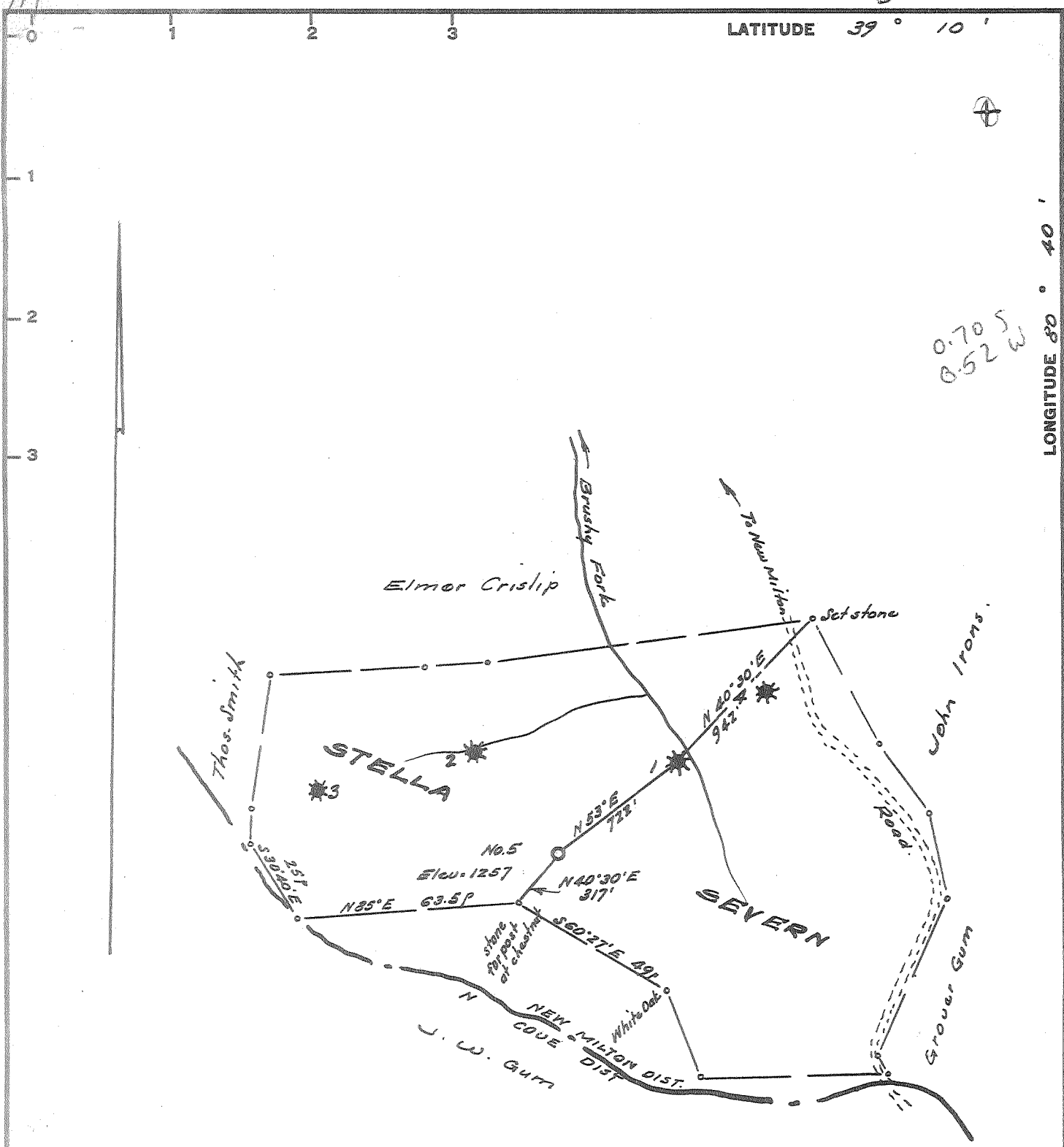


3-22-66 P.



W. H. Hoel

New Location.....
 Drill Deeper.....
 Abandonment.....

Elev. ref. :- Well No. 1 = 1079'
 Error in Closure :- Less than 1 in 200

Company R. Wayne Christensen
 Address 1161 N. Ballinger Hy., Flint, Mich
 Farm Stella Severn
 Tract _____ Acres 108 Lease No. _____
 Well (Farm) No. Five Serial No. _____
 Elevation (Spirit Level) 1257
 Quadrangle Ked's WC
 County Doddridge District New Milton
 Engineer W. H. Hoel
 Engineer's Registration No. 1227
 File No. _____ Drawing No. _____
 Date March 21, 1966 Scale 1" = 400' = 660'

STATE OF WEST VIRGINIA
 DEPARTMENT OF MINES
 OIL AND GAS DIVISION
 CHARLESTON

WELL LOCATION MAP
 FILE NO. 000-1359

6/6
 † Denotes location of well on United States Topographic Maps, scale 1 to 62,500, latitude and longitude lines being represented by border lines as shown.
 - Denotes one inch spaces on border line of original tracing.



STATE OF WEST VIRGINIA
DEPARTMENT OF MINES
OIL AND GAS DIVISION 3

Rotary
Spudder
Cable Tools
Storage

WELL RECORD

Oil or Gas Well oil
(KIND)

Form OG-10

Quadrangle

Permit No. DOD-1359

Company R. Wayne Christenson
Address 1161 N. Ballenger-Flint, Michigan
Farm Stella Severin Acres 108
Location (waters) Brushy Fork
Well No. FIVE (5) Elev.
District New Milton County Doddridge
The surface of tract is owned in fee by Stella Severin
R.F.D. New Milton
Mineral rights are owned by Stella Severin 1/2 Iora
Boyce & Fannie Booth 1/2 Clarksburg
Drilling commenced July 25th, 1966
Drilling completed August 29th, 1966 (Kirk Dr'l. Co.)
Date Shot From To
With

Casing and Tubing	Used in Drilling	Left in Well	Packers
Size			Kind of Packer
16" "	19'	19'	
13" "			
10" "	201'	201'	Size of
8 1/4" "	1245'	none	
6 3/8" "	2372'	none	Depth set
5 3/16" "			
4 1/2" "	2539'	2539'	Perf. top <u>2454'</u>
3" "			Perf. bottom <u>2469'</u>
Liners Used			Perf. top <u>(14 holes)</u>
			Perf. bottom

Open Flow /10ths Water in Inch
/10ths Merc. in Inch

Attach copy of cementing record.

Volume Cu. Ft.

CASING CEMENTED yes SIZE 4 1/2 No. Ft. 2539' Date

Rock Pressure lbs. hrs.

Amount of cement used (bags) (70 bags)

Oil 10 bbls., 1st 24 hrs.

Name of Service Co. Lawson Cement Co.

WELL ACIDIZED (DETAILS)

COAL WAS ENCOUNTERED AT FEET INCHES

WELL FRACTURED (DETAILS) Haliburton (invoice enclosed)

FEET INCHES FEET INCHES

FEET INCHES FEET INCHES

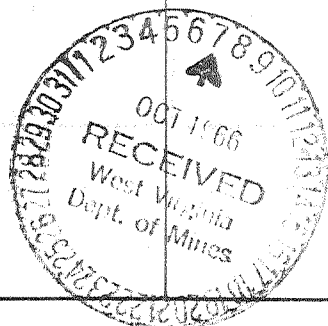
RESULT AFTER TREATMENT (Initial open Flow or bbls.) 10 bbls.

ROCK PRESSURE AFTER TREATMENT 600 # HOURS

Fresh Water none Feet Salt Water none on log Feet 1775' to 1843'

Producing Sand Big Injun Depth 2454' to 2469'

Formation	Color	Hard or Soft	Top	Bottom	Oil, Gas or Water	Depth	Remarks
Red-rock		soft	0	12			
sand-crevice		"	12	32			crevice
sand		"	32	44			
red rock		"	44	54			
sand		"	54	87			
red rock		"	87	118			
sand		hard	118	130			
shells & r Rock		hard	130	166			
sand		hard	166	178			
shells & r Rock		"	178	197			
sand		"	197	235			
shale & r Rock		soft	235	274			
sand		"	274	290			
shale & r Rock		"	290	336			
sand		hard	336	362			
shale		soft	362	426			
slate-sandy		"	426	459			
red rock		"	459	477			
lime		hard	477	497			
lime & r rock		"	497	510			
lime-sandy		"	510	525			
red rock		soft	525	544			
sand & slate		med.	544	569			
sand & lime		hard	569	575			
red rock		soft	575	615			
slate & shells		med	615	665			
red rock		soft	665	689			
lime-sandy		hard	689	714			
red rock		soft	714	721			
sand		hard	721	736			



(over)

Formation	Color	Hard or Soft	Top 3	Bottom	Oil, Gas or Water	Depth Found	Remarks
Red rock		soft	736	776			
sand		"	776	810			
sand & slate		med	810	820			
sand		hard	820	850			
shale		soft	850	856			
sand		"	856	878			
sand & slate		med	878	896			
sand		hard	896	962			
slate		soft	962	995			
sand		med	995	1050			
Red rock		soft	1050	1056			
lime & slate		med	1056	1066			
slate & red rock		soft	1066	1100			
sand		hard	1100	1142			
red rock		soft	1142	1147			
r rock & lime		med	1147	1170			
red rock		soft	1170	1210			
sand		hard	1210	1221			
red rock		soft	1221	1238			
lime-sandy		hard	1238	1247			
slate		soft	1247	1280			
lime sandy		hard	1280	1317			
red rock		soft	1317	1340			
lime-sandy		hard	1340	1365			
slate-sandy		med	1365	1402			
lime-sandy		hard	1402	1430			
sand		"	1430	1450			
slate-sandy		med	1450	1480			
sand		"	1480	1535			
slate & shells		"	1535	1775			
sand		hard	1775	1843	2 bailers water per hour		
slate sandy		med	1843	1956			
sand		hard	1956	1975			
sand & slate		med	1975	2132			
sand		hard	2132	2157			
red rock & slate		soft	2157	2216			
r rock-slate-lime		med	2216	2293			
lime & slate		hard	2293	2314			
slate		soft	2314	2319			
lime		hard	2319	2347	Little Lime		
slate & lime		med	2347	2355			
lime		hard	2355	2414	Big-Lime		
sand & lime	INJUN	"	2414	2430	Cored (oil show)		
sand		"	2430	2503			
sand		"	2503	2522			
slate		soft	2522	2539			
				2539	Total Depth		

Date Oct 3, 1965

APPROVED W. Wayne Chertman, Owner

By _____ (Title)