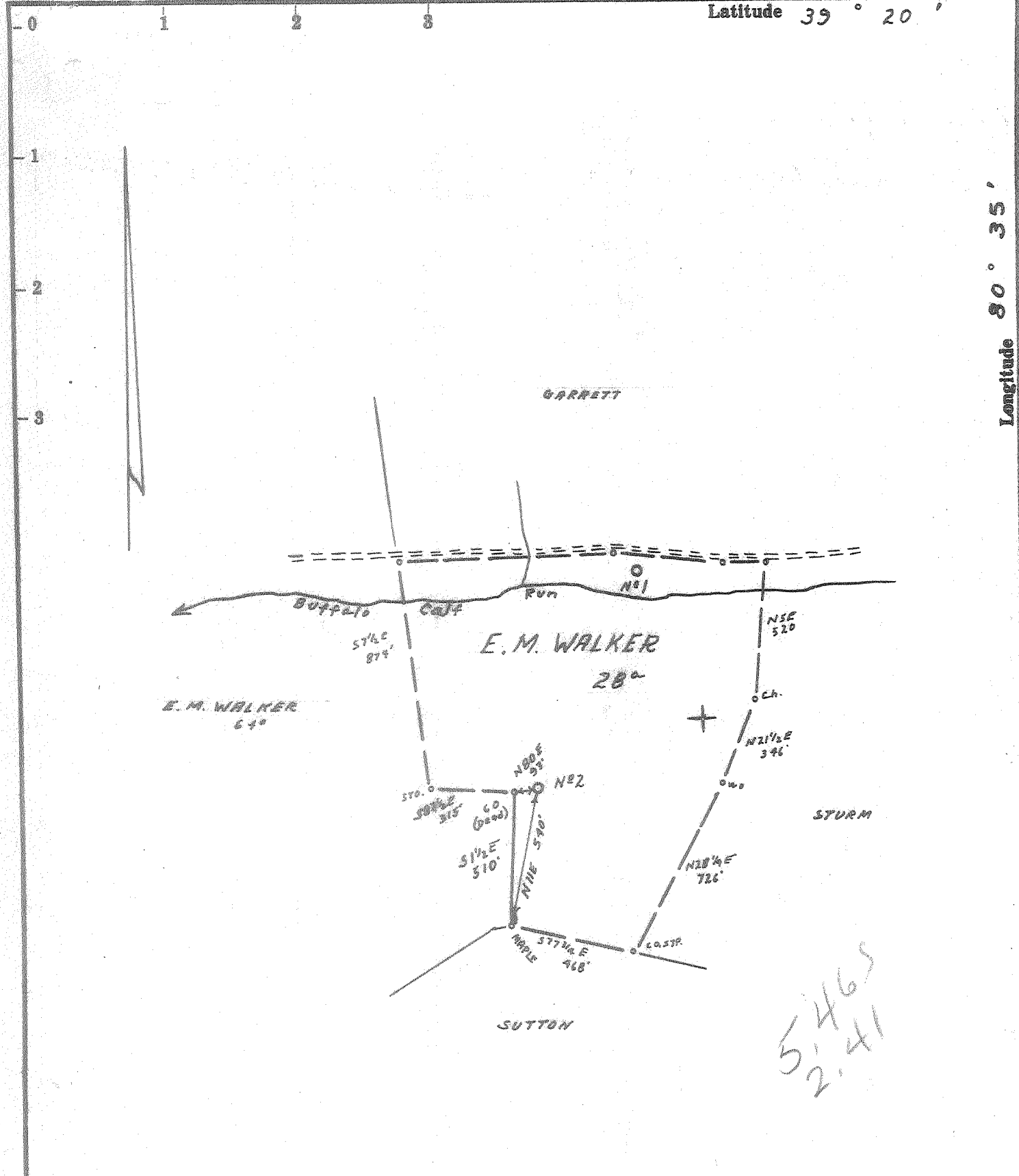


Latitude 39° 20'

Longitude 80° 35'



5465
241

- Fracture.....
- Redrill.....
- New Location.
- Drill Deeper.....
- Abandonment.....

Source of Elevation No. 1 WELL ELV. 890'

I, the undersigned, hereby certify that this map is correct to the best of my knowledge and belief and shows all the information required by paragraph 6 of the rules and regulations of the oil and gas section of the mining laws of West Virginia.

Minimum accuracy, one part in 200

Company J. E. WEBBER

Address MORGANSVILLE, W. VA.

Farm E. M. WALKER

Tract 2 Acres 28 Lease No. _____

Well (Farm) No. (2) Serial No. _____

Elevation (Spirit Level) 1164'

Quadrangle CENTERPOINT SW 35 SC

County DODDRIDGE District GREENBRIER

Engineer James J. Jeffries

Engineer's Registration No. 11084

File No. 211/58 Drawing No. _____

Date 2-19-66 Scale 1" = 500'

STATE OF WEST VIRGINIA
DEPARTMENT OF MINES
OIL AND GAS DIVISION
CHARLESTON

WELL LOCATION MAP
FILE NO. DOD-1374

+ Denotes location of well on United States Topographic Maps, scale 1 to 62,500, latitude and longitude lines being represented by border lines as shown.

— Denotes one inch spaces on border line of original tracing.



STATE OF WEST VIRGINIA
DEPARTMENT OF MINES
OIL AND GAS DIVISION 6

- Rotary
- Spudder
- Cable Tools
- Storage

Quadrangle CenterPoint
 Permit No. D0D 1374

WELL RECORD

Oil or Gas Well Gas
 (KIND)

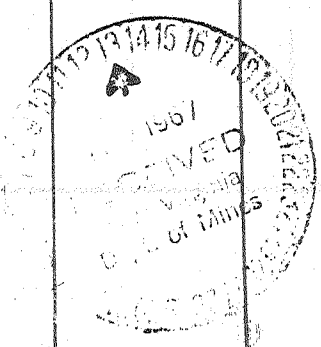
Company Webber Associates
 Address Morgansville, W. Va.
 Farm E. Walker Acres 33
 Location (waters) Buffalo Calf
 Well No. 2 Elev. 1164
 District Greenbrier County Doddridge
 The surface of tract is owned in fee by Ed. Walker
 Address Salen, W. Va.
 Mineral rights are owned by Walker et all
 Address Salen, W. Va.
 Drilling commenced April 1966
 Drilling completed June 1, 1966
 Date Shot From To

Casing and Tubing	Used in Drilling	Left in Well	Packers
Size			Kind of Packer
16	20	20	
13			Size of
10	520	520	
8 1/4	1190	1190	Depth set
6 3/4			
5 3/16			Perf. top
4 1/2	2355	2355	Perf. bottom
3			Perf. top
2			Perf. bottom
Liners Used			

With
 Open Flow /10ths Water in Inch
 /10ths Merc. in Inch
 Volume 25,000 Nat. Cu. Ft.
 Rock Pressure lbs. hrs.
 Oil bbls., 1st 24 hrs.
 WELL ACIDIZED (DETAILS)
 WELL FRACTURED (DETAILS) 2000 lbs. 31,000 # sand
 RESULT AFTER TREATMENT (Initial open Flow or bbls.) 1,050 MCF
 ROCK PRESSURE AFTER TREATMENT 610 HOURS 24 hrs.
 Fresh Water Feet Salt Water Feet
 Producing Sand Big Spring Depth

Attach copy of cementing record.
 CASING CEMENTED 1 1/2 SIZE 2355 No. Ft. Date
 Amount of cement used (bags)
 Name of Service Co. Dowell
 COAL WAS ENCOUNTERED AT FEET INCHES
 FEET INCHES FEET INCHES
 FEET INCHES FEET INCHES

Formation	Color	Hard or Soft	Top	Bottom	Oil, Gas or Water	Depth	Remarks
Red Rock	and Shells		0	50			
Slate	and shells		50	70			
Sand			70	80			
Slate			80	95			
Red Rock			95	153			
Slate			153	190			
Red Rock			190	250			
Slate			250	262			
Sand			263	295			
Slate			295	340			
Coal			340	342			
Slate and Shells			342	390			
Red Rock			390	395			
Slate and shells			395	409			
Red Rock			409	421			
Lime			421	442			
Slate and Shells			442	450			
Red Rock			450	485			
Slate			485	490			
Sand			490	525			
Slate			545	548			
Sand			548	585			
Slate			585	630			
Red Rock			630	640			
Slate			640	650			
Red Rock			650	693			
Lime			693	718			
White Slate			718	731			
Sand			731	760			



Formation	Color	Hard or Soft	Top	Bottom	Oil, Gas or Water	Depth Found	Remarks
Slate and Shells			760	800			
Sand			800	815			
Slate and Shells			815	852			
Coal			852	860			
Slate and Shells			860	930			
Sand			930	940			
Slate and Shells			940	946			
Sand			956	973			
Slate			973	1000			
Red Rock			1000	1057			
Slate and Shells			1057	1085			
Red Rock			1085	1145			
Slate and Shells			1145	1215			
Black Slate			1215	1215			
Red Rock			1215	1257			
Slate			1257	1374			
Sand			1374	1374			
Sand			1374	1399			
Black Slate			1399	1415			
Pink Rock			1415	1425			
Slate and Shells			1425	1660			
Sand			1660	1709			
Black Slate			1709	1790			
Sand			1790	1870			
Slate and Shells			1870	1950			
Sand			1950	2015			
Slate and Shells			2015	2125			
Sand			2125	2176			
Lime			2176	2183			
Pencil cave			2183	2195			
Big Lime			2195	2204			
Big Injun Sand			2204	2332			
Slate			2332	2359			

Date Jan 20, 1967

APPROVED Walter Assoc Owner

By Jack E. Walker (Title)