

Longitude 80° 35'

- Fracture....
- Redrill.....
- New Location.
- Drill Deeper.....
- Abandonment.....

Source of Elevation ROAD FARK, EAST OF LOC. ELV. 830' USGS

I, the undersigned, hereby certify that this map is correct to the best of my knowledge and belief and shows all the information required by paragraph 6 of the rules and regulations of the oil and gas section of the mining laws of West Virginia.

Minimum accuracy, one part in 200

Company WACO OIL & GAS
JACK L. WEBBER
 Address MORGANSVILLE, W.VA. 26351
 Farm ANCEL & VANCE SUTTON
 Tract _____ Acres 44 Lease No. _____
 Well (Farm) No. 1 Serial No. 1
 Elevation (Spirit Level) 1032
 Quadrangle VADIS
 County DODDRIDGE District GREENBRIER
 Engineer JAMES DUFFIN
 Engineer's Registration No. 1084
 File No. 210/110 Drawing No. _____
 Date 10-2-65 Scale 1" = 500'

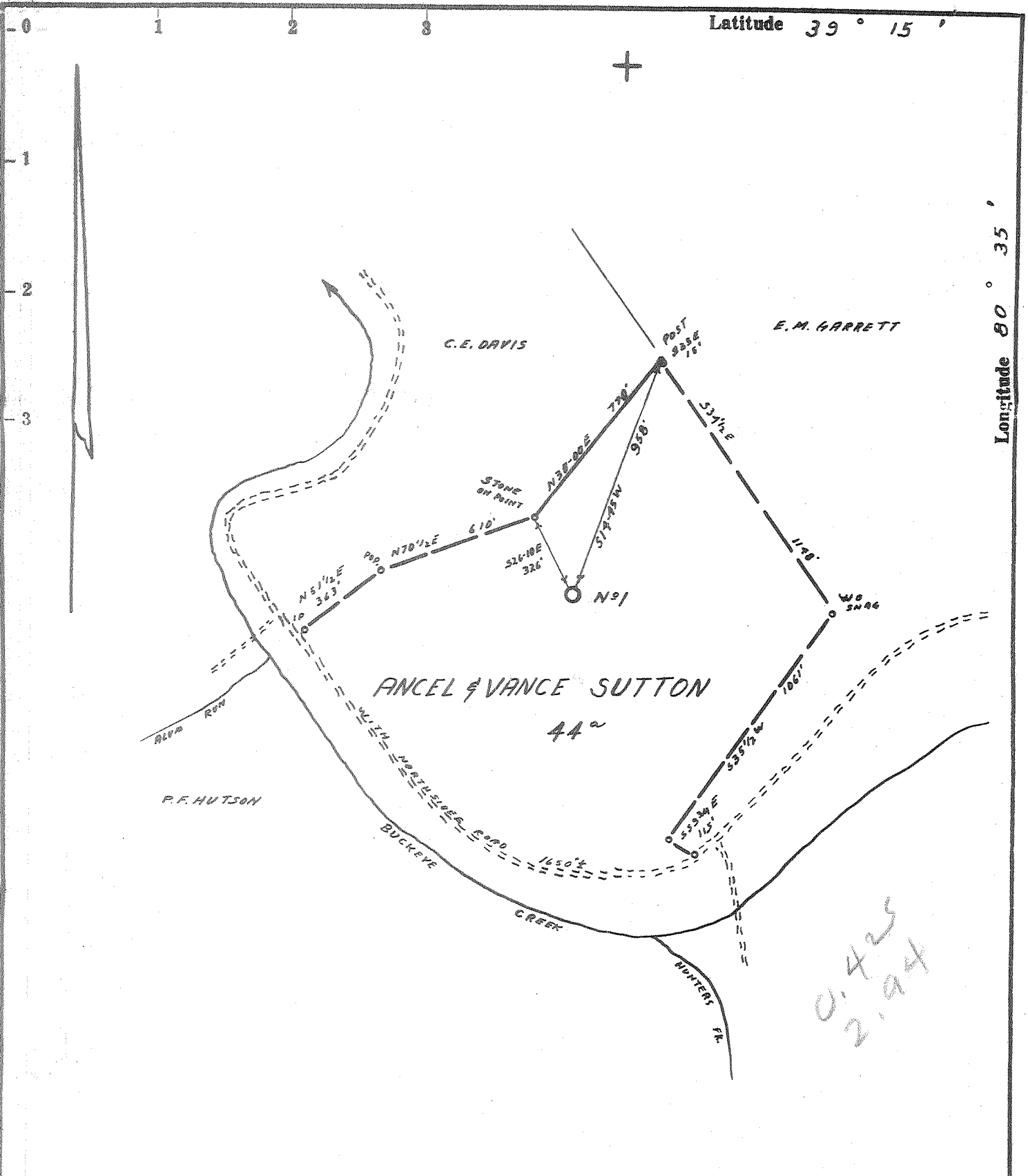
STATE OF WEST VIRGINIA
 DEPARTMENT OF MINES
 OIL AND GAS DIVISION
 CHARLESTON

WELL LOCATION MAP
 FILE NO. DOD-1396-P

+ Denotes location of well on United States Topographic Maps, scale 1 to 62,500, latitude and longitude lines being represented by border lines as shown.

— Denotes one inch spaces on border line of original tracing.

47-017



- Fracture.....
- Redrill.....
- New Location.
- Drill Deeper.....
- Abandonment.....

Source of Elevation ROAD FORK, EAST OF LOC. ELEV. 830' USGS

I, the undersigned, hereby certify that this map is correct to the best of my knowledge and belief and shows all the information required by paragraph 6 of the rules and regulations of the oil and gas section of the mining laws of West Virginia.

Minimum accuracy, one part in 200

Company	JACK E. WEBBER	
Address	MORGANSVILLE, W.VA.	
Farm	ANCEL & VANCE SUTTON	
Tract	Acres 44 [±]	Lease No. _____
Well (Farm) No.	1	Serial No. 1
Elevation (Spirit Level)	1032' OIL-KIA	
Quadrangle	VADIS	NW23 NC
County	DODDRIDGE	District GREENBRIER
Engineer	<i>James J. Jeffers</i>	
Engineer's Registration No.	1084	
File No.	210/110	Drawing No. _____
Date	10-2-65	Scale 1" = 500'

STATE OF WEST VIRGINIA
DEPARTMENT OF MINES
OIL AND GAS DIVISION
CHARLESTON

WELL LOCATION MAP

FILE NO. DOD-1396

+ Denotes location of well on United States Topographic Maps, scale 1 to 62,500, latitude and longitude lines being represented by border lines as shown.

— Denotes one inch spaces on border line of original tracing.



STATE OF WEST VIRGINIA
DEPARTMENT OF MINES
OIL AND GAS DIVISION 13

- Rotary
- Spudder
- Cable Tools
- Storage

Quadrangle Center Point

Permit No. D&D. 1396

WELL RECORD

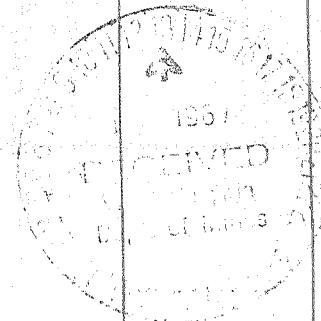
Oil or Gas Well Oil & Gas
(KIND)

Company Webber Assoc.
Address Morgansville, W. Va.
Farm Anell Sutton Acres 44
Location (waters) Greenbrier Creek 1032 Klau
Well No. 1 Elev. 1140
District Greenbrier County Doddridge
The surface of tract is owned in fee by Anell Sutton
Address Salem, W. Va.
Mineral rights are owned by Vance Sutton
Address Stubenville, Ohio
Drilling commenced May, 1966
Drilling completed July 1966
Date Shot From To
With
Open Flow /10ths Water in Show Inch
/10ths Merc. in Inch
Volume Cu. Ft.
Rock Pressure lbs. hrs.
Oil bbls., 1st 24 hrs.
WELL ACIDIZED (DETAILS)
WELL FRACTURED (DETAILS) 600 bbls. 20,000 pds. sand
RESULT AFTER TREATMENT (Initial open Flow or bbls.) 2 Bbl. day 100 MCF GAS
ROCK PRESSURE AFTER TREATMENT HOURS
Fresh Water Feet Salt Water Feet
Producing Sand Big Injun Depth

Casing and Tubing	Used in Drilling	Left in Well	Packers
Size	20	20	Kind of Packer
16			
13			
10	400	AAA	Size of
8 1/4	1020	1020	
6 3/4	1902		Depth set
5 3/16			
4 1/2	2280	2280	
3			Perf. top
2			Perf. bottom
Liners Used			Perf. top
			Perf. bottom

Attach copy of cementing record.
CASING CEMENTED 4 1/2 SIZE 2280 No. Ft. Date
Amount of cement used (bags) 37
Name of Service Co. Dowell
COAL WAS ENCOUNTERED AT 775 FEET INCHES
785 FEET INCHES FEET INCHES
FEET INCHES FEET INCHES

Formation	Color	Hard or Soft	Top	Bottom	Oil, Gas or Water	Depth	Remarks
Dirt			0	5			
Slate			5	35			
Sand			35	55			
Slate			55	100			
Red Rock			100	103			
Gray Slate			103	125			
Red Rock			125	129			
Coal			129	130			
Slate			130	150			
Slate			150	175			
Sand Hard			175	205			
Slate			205	210			
Sand			210	265			
Slate			265	275			
Sand			275	287			
Slate Dark			287	304			
Slate light			303	332			
Red Rock			332	349			
Slate and Shells			349	370			
Red Rock			370	375			
Sand shells			375	395			
Gray slate			395	410			
Sand			410	470			
Slate Gray			470	505			
Slate			505	515			
Cherty Lime			505	592			
Red Rock			592	692			
Slate			692	740			
Red Rock			740	740			
Slate			740	775			



Formation	Color	Oil, Gas or Water	Depth Feet	Remarks
			785	
			797	
			847	
			897	
			924	
			972	
			992	
			1012	
			1027	
			1042	
			1046	
			1050	
			1052	
			1077	
			1123	
			1126	
			1137	
			1192	
			1232	
			1272	
			1287	
			1320	
			1387	
			1546	
			1582	
			1822	
			1912	
			1912	
			2027	
			2032	
			2032	
			2057	
			2062	
			2097	
			2097	
			2107	
			2117	
			2160	
			2179	
			2179	
			2185	
			2185	
			2221	
			2265	
			2265	
			2285	

Date Jan 20, 1966

By Webb Assoc, Owner

Jack J. Webb