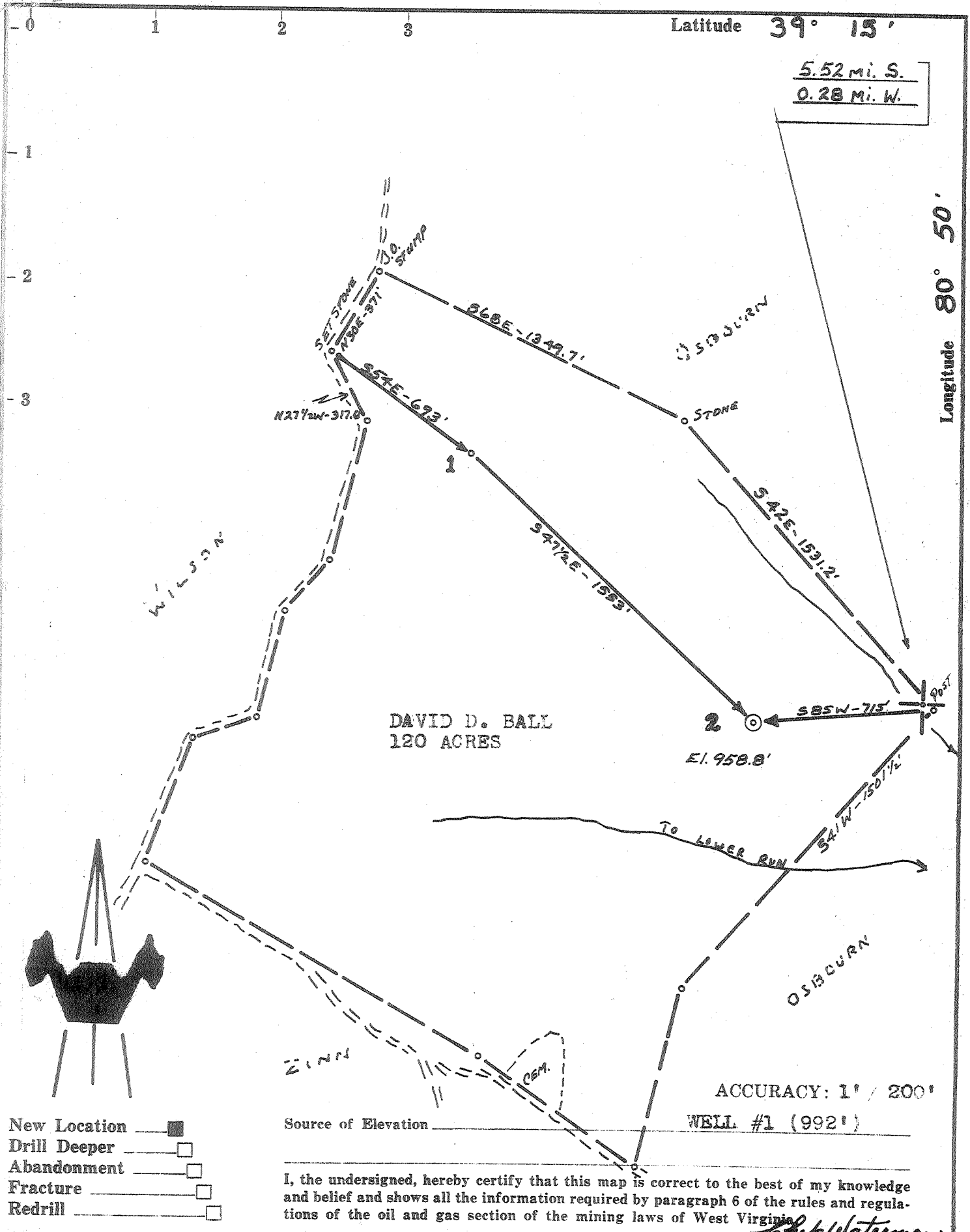


M P1



Company	FRANCES FRIESTAD
Address	ROCKFORD, ILLINOIS
Farm	DAVID D. BALL
Tract	Acres 120 Lease No.
Well (Farm) No.	2 Serial No.
Elevation (Spirit Level)	958.8'
Quadrangle	HOLBROOK - NC
County	DODDRIDGE District SOUTHWEST
Engineer	CHET WATERMAN
Engineer's Registration No.	3788
File No.	66003-153 Drawing No.
Date	3/16/66 Scale 1" = 500'

STATE OF WEST VIRGINIA
DEPARTMENT OF MINES
OIL AND GAS DIVISION
CHARLESTON

WELL LOCATION MAP
FILE NO. DOD - 1405

+ Denotes location of well on United States Topographic Maps, scale 1 to 62,500, latitude and longitude lines being represented by border lines as shown.

— Denotes one inch spaces on border line of original tracing.

6-6-133



STATE OF WEST VIRGINIA
DEPARTMENT OF MINES
OIL AND GAS DIVISION

Rotary
Spudder
Cable Tools
Storage

Quadrangle Holbrook SW

Permit No. DOD - 1405

WELL RECORD

Oil or Gas Well GAS
(KIND)

Company FRANCIS M. FRIESTAD
Address 1104 Campus Hills Blvd.-Rockford, Ill.
Farm David Ball Acres 120
Location (waters) Bear Fork
Well No. 2 (two) Elev. 959'
District Southwest County Doddridge
The surface of tract is owned in fee by David Ball
Address Oxford, W. Va.
Mineral rights are owned by Same
Address _____

Drilling commenced Sept. 5, 1966
Drilling completed Oct. 3, 1966
Date Shot none From _____ To _____
With _____
Open Flow /10ths Water in _____ Inch
/10ths Merc. in _____ Inch
Volume 60 m _____ Cu. Ft.
Rock Pressure _____ lbs. _____ hrs.
Oil _____ bbls., 1st 24 hrs.
WELL ACIDIZED (DETAILS) no

WELL FRACTURED (DETAILS) 31,500 gals. water-120 sks.20-40,130 sks.10-20, 33.5 BPM at 1750 psi.

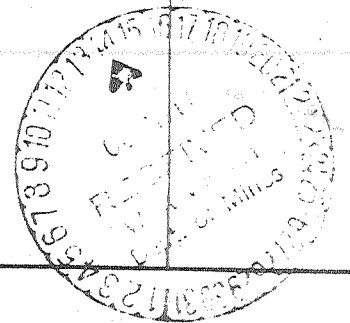
RESULT AFTER TREATMENT (Initial open Flow or bbls.) 2,000 mcf
ROCK PRESSURE AFTER TREATMENT 650 HOURS 14
Fresh Water 45 Feet 1090'
Producing Sand Big Injun Depth 1922 - 1990

Casing and Tubing	Used in Drilling	Left in Well	Packers
Size			Kind of Packer
16			
13	15'	15'	
10	434'		Size of
8 1/4	1114'		
6 3/4			Depth set
5 3/16			
4 1/2	2022'	2022'	
3			Perf. top 1972
2			Perf. bottom 1983
Liners Used			Perf. top
			Perf. bottom

Attach copy of cementing record.
CASING CEMENTED 4 1/2" SIZE 2022 No. Ft. 10/3/66 Date
Amount of cement used (bags) 60 sks. Common
Name of Service Co. Dowell
COAL WAS ENCOUNTERED AT none FEET _____ INCHES
_____ FEET _____ INCHES
_____ FEET _____ INCHES

Formation	Color	Hard or Soft	Top	Bottom	Oil, Gas or Water	Depth	Remarks
top soil			0	5			
sand	yellow		5	20			
sand	white		20	45			
red rock			45	130			
sand			130	150			
red rock			150	170			
slate			170	190			
red rock			190	218			
sand			218	235			
lime			235	250			
slate			250	258			
red rock&lime			258	355			
sand			355	365			
slate			365	390			
red rock			390	425			
sand			425	459			
slate & shells			459	550			
sand			550	575			
slate			575	619			
red rock			619	712			

O-V-E-R



Formation	Color	Hard or Soft	Top	Bottom	Oil, Gas or Water	Depth Found	Remarks
slate			712	732			
lime			732	765			
slate			765	780			
sand			780	812			
slate	black		812	830			
red rock			830	850			
lime			850	865			
sand			865	905			
slate			905	940			
sand			940	962	smell oil	940-50	
slate			962	970	gas	965-74	
sand			970	1005			
slate			1005	1040			
slate & shells			1040	1080			
lime			1080	1100			
slate			1100	1160			
sand			1160	1235	show oil	1165	
slate			1235	1245			
sand			1245	1310			
slate&shells			1310	1480			
sand			1480	1570	show oil	1480-94	
slate&shells			1570	1680			
sand			1680	1730			Salt sand
slate	black		1730	1795			
lime			1795	1805			Little Ln.
slate			1805	1818			
sand			1818	1828	gas	182	Blue Monday
lime			1828	1905	gas	1915, 1938	Big Lime
sand			1905	1963	oil	1940	Big Injun
slate			1963	1999			
Total Depth	-Driller			1999			
	Gamma Ray log shows			2025			
							Measurements should be corrected down 26' from drill record.

Date October 13, 1966

APPROVED Francis M. Friestad, Owner

By [Signature] Consultant