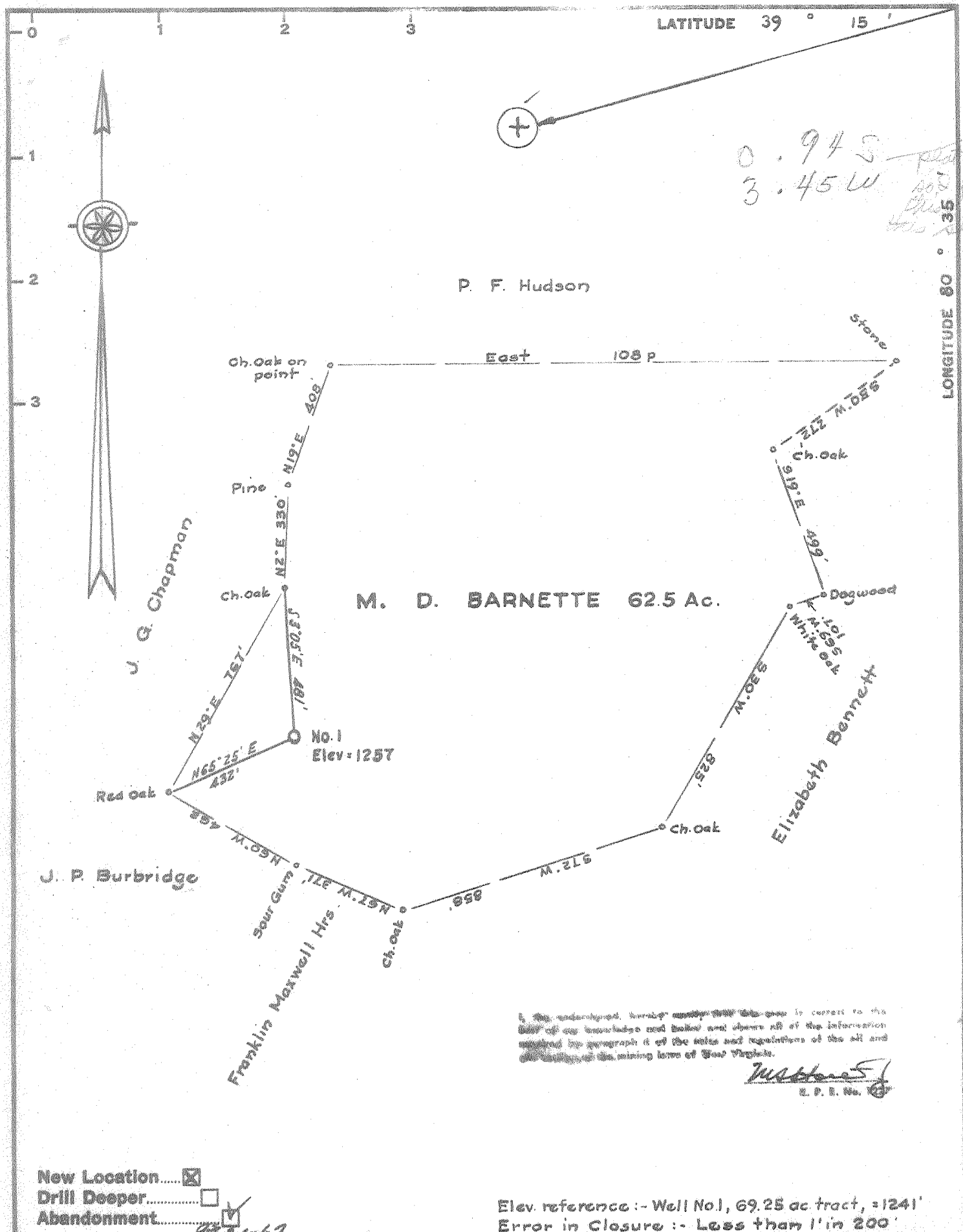


12-24-66



0.945
3.45 W
Used this plot to micro out this on sheet 1.2.

I, the undersigned, hereby certify that this map is correct to the best of my knowledge and belief and where all of the information required by paragraph (f) of the rules and regulations of the oil and gas commission of the mining laws of West Virginia.

Mustine S.
E. P. S. No. 123

New Location
Drill Deeper
Abandonment
90-21-67

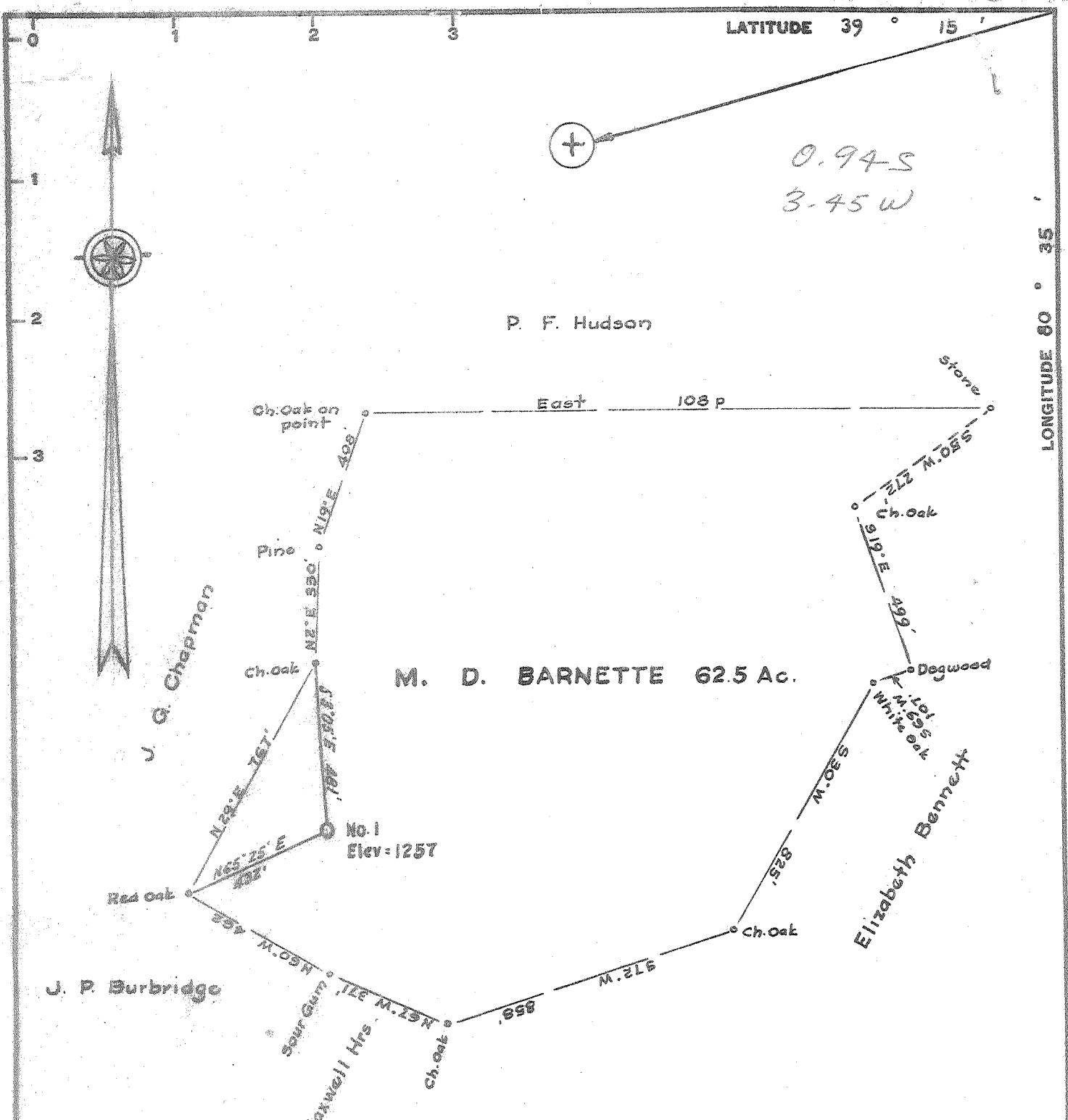
Elev. reference :- Well No.1, 69.25 ac tract, =1241'
Error in Closure :- Less than 1' in 200'

Company LITTLE SWISS OIL & GAS CO.
 Address P.O. Box 1834, Huntington, W. Va.
 Farm M. D. Barnette
 Tract _____ Acres 62.5 Lease No. _____
 Well (Farm) No. One Serial No. _____
 Elevation (Spirit Level) 1257
 Quadrangle Yadis *NC*
 County Doddridge District Greenbrier
 Engineer *Mustine S.*
 Engineer's Registration No. 1287
 File No. _____ Drawing No. _____
 Date Oct. 18, 1966 Scale 1" = 400'

STATE OF WEST VIRGINIA
DEPARTMENT OF MINES
OIL AND GAS DIVISION
CHARLESTON

WELL LOCATION MAP
FILE NO. DOD - 1417-P

+ Denotes location of well on United States Topographic Maps, scale 1 to 62,500, latitude and longitude lines being represented by border lines as shown.
- Denotes one inch spaces on border line of original tracing.



I, the undersigned, hereby certify that this map is correct to the best of my knowledge and belief and shows all of the information required by paragraph 6 of the rules and regulations of the oil and gas division of the mining laws of West Virginia.

W. P. E. No. 10
 W. P. E. No. 10

New Location
 Drill Deeper
 Abandonment

Elev. reference :- Well No. 1, 69.25 ac. tract, = 1241'
 Error in Closure :- Less than 1' in 200'

Company LITTLE SWISS OIL & GAS CO.
 Address P.O. Box 1834, Huntington, W. Va.
 Farm M. D. Barnette
 Tract Acres 62.5 Lease No. _____
 Well (Farm) No. One Serial No. _____
 Elevation (Spirit Level) 1257'
 Quadrangle Yadis NC
 County Doddridge District Greenbrier
 Engineer *W. P. E. No. 10*
 Engineer's Registration No. 1227
 File No. _____ Drawing No. _____
 Date Oct. 18, 1966 Scale 1" = 400'

STATE OF WEST VIRGINIA
 DEPARTMENT OF MINES
 OIL AND GAS DIVISION
 CHARLESTON

WELL LOCATION MAP
 FILE NO. DOD - 1417

+ Denotes location of well on United States Topographic Maps, scale 1 to 62,500, latitude and longitude lines being represented by border lines as shown.
 - Denotes one inch spaces on border line of original tracing.

6-0 99



STATE OF WEST VIRGINIA
DEPARTMENT OF MINES
OIL AND GAS DIVISION / 2

Rotary
Spudder
Cable Tools
Storage

Quadrangle.....

Permit No. DOD-1417

WELL RECORD

Oil or Gas Well Gas
(KIND)

Company Joseph H. Hager & Virgil E. Stanley
DBA Little Swiss Oil & Gas Company
Address P.O. Box 1834, Huntington, W.Va. 25719
Farm M.D. Barnett Acres 62
Location (waters) Alumbank
Well No. Sarah Barnett Well #1 Elev. 1257
District Greenbrier County Doddridge
The surface of tract is owned in fee by.....

Mineral rights are owned by M.D. Barnett Heirs
Clarksburg, West Virginia

Drilling commenced 11-14-66
Drilling completed 12-31-66

Date Shot From..... To.....
With.....

Open Flow /10ths Water in..... Inch
/10ths Merc. in..... Inch

Volume..... Cu. Ft.

Rock Pressure..... lbs..... hrs.

Oil..... bbls., 1st 24 hrs.

WELL ACIDIZED (DETAILS).....

WELL FRACTURED (DETAILS) 500 gal. 15% Hcl. Acid 50,000# 20/40 Sand
1300 barrels fresh water

RESULT AFTER TREATMENT (Initial open Flow or bbls.) 500,000

ROCK PRESSURE AFTER TREATMENT 520 HOURS

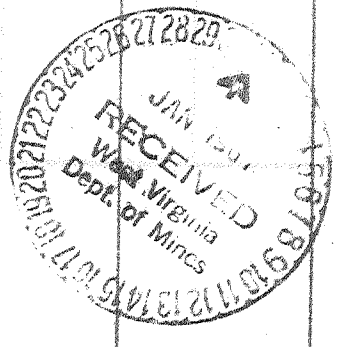
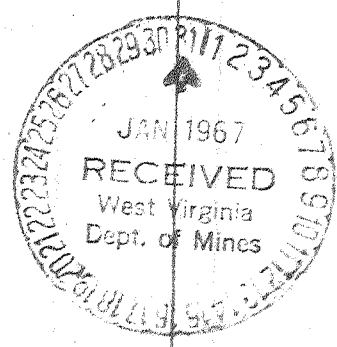
Fresh Water..... Feet..... Salt Water..... Feet.....

Producing Sand Big Injun Depth 2480

Casing and Tubing	Used in Drilling	Left in Well	Packers
Size			Kind of Packer
16	25	25	
13	361		
10			Size of
8 1/4	1740	1740	
6 3/4			Depth set
5 3/16		2480	
4 1/2			
3			Perf. top 2384
2			Perf. bottom
Liners Used			Perf. top 2400
			Perf. bottom 2415

Attach copy of cementing record.
CASING CEMENTED 4-1/2 SIZE No. Ft. 1-1-67 Date
Amount of cement used (bags) 85
Name of Service Co. Halliburton Company
COAL WAS ENCOUNTERED AT 935 FEET 941 INCHES
FEET INCHES FEET INCHES
FEET INCHES FEET INCHES

Formation	Color	Hard or Soft	Top	Bottom	Oil, Gas or Water	Depth	Remarks
Top Soil		S	0	17			
Sand	Blue	H	17	30			
Rock	Red	S	30	64			
Sand	Blue	H	64	80			
Rock	Red	S	80	90			
Shale	Blue	S	90	124			
Rock	Red	S	124	135			
Sand	Blue	H	135	170			
Rock	Red	S	170	195			
Shale	Blue	S	195	207			
Sand	Gray	H	207	230			
Coal		S	230	231			
Rock	Red	S	231	255			
Sandy Shale	Blue	H	255	320			
Coal		S	320	322			
Slate	Gray	S	322	348			
Sand	White	S	348	400			
Shale	Gray	S	400	440			
Rock	Red	S	440	502			
Sand	Gray	S	502	518			
Shale	Blue	S	518	545			
Sand	White	H	545	566			
Rock	Red	S	566	595			
Sand	Gray	H	595	630			
Shale	Gray	S	630	714			
Rock	Red	S	714	775			
Sandy Shale	Blue	H	775	822			
Sand	White	S	822	842			
Shale	Blue	S	842	920			



Formation	Color	Hard or Soft	Top 12	Bottom	Oil, Gas or Water	Depth Found	Remarks
Slate	Gray	S	920	935			
Coal		S	935	941			
Shale	Gray	S	941	970			
Sand	White	H	970	987			
Shale	Blue	S	987	1100			
Rock	Red	S	1100	1120			
Shale	Blue	S	1120	1190			
Rock	Red	S	1190	1200			
Shale	Blue	S	1200	1360			
Rock	Red	S	1360	1376			
Shale	Blue	H	1376	1405			
Slate	Gray	S	1405	1430			
Sand	Gray	H	1430	1525			
Sandy Shale	Blue	H	1525	1572			
Slate	Gray	S	1572	1590			
Sandy Shale	Blue	H	1590	1630			
Slate	Gray	S	1630	1675			
Salt Sand	Gray	H	1675	1786	Water at	1693'	
Shale	Gray	S	1786	1825			
Salt Sand	Gray	H	1825	1870			
Slate	Gray	S	1870	1940			
Shale	Blue	S	1940	1976			
Sand	Gray	H	1976	2020			
Slate	Gray	S	2020	2035			
Sand	Gray	H	2035	2046			
Slate	Black	S	2046	2085			
Shale	Gray	S	2085	2142			
Slate	Black	S	2142	2175			
Shale	Gray	S	2175	2184			
Sand	White	H	2184	2208			
Sandy Shale	Blue	H	2208	2232			
Little Lime		H	2232	2250			
Slate	Gray	S	2250	2274			
Big Lime		H	2274	2365	Oil at	2358'	
Injun Sand		H	2365	2419			
Sandy Shale	Blue	S	2419				

Date January 27, 1967

APPROVED Joseph H. Hagen, Owner

By _____ Partner

(Title)