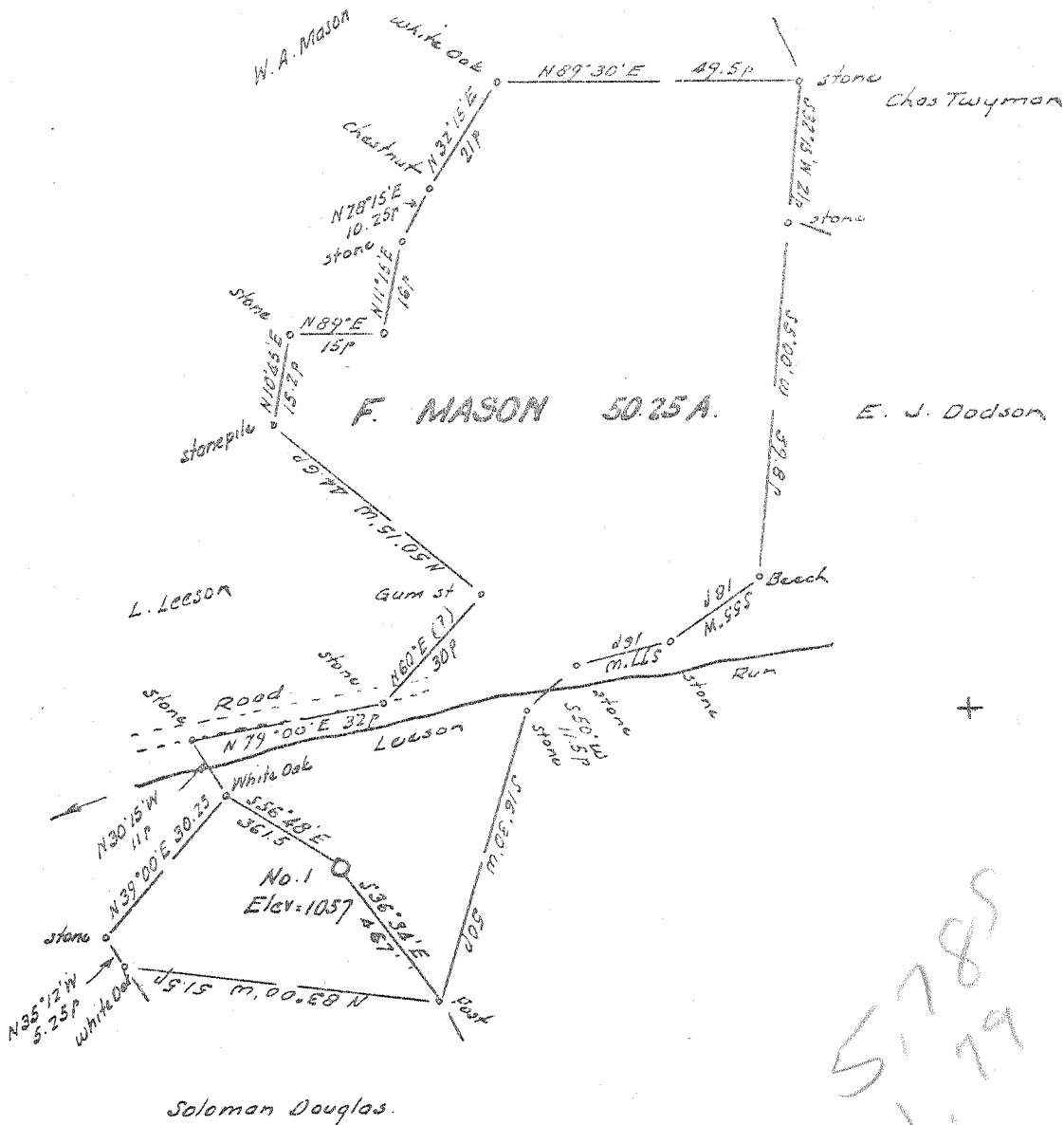


LATITUDE 39 ° 22'

LONGITUDE 80 ° 50'



New Location   
 Drill Deeper   
 Abandonment  2-27-68

Elev. ref. - Elev. top Greenwood Hill - 1078  
 Error in Closure - Less than 1 in 200'

*W. J. ...*

Company Farrall L. Prior  
 Address 224 Washington Blvd. Balnear, Ohio  
 Farm F. Mason  
 Tract \_\_\_\_\_ Acres 50.25 Lease No. \_\_\_\_\_  
 Well (Farm) No. One Serial No. \_\_\_\_\_  
 Elevation (Spirit Level) 1057  
 Quadrangle West Union 5C  
 County Doddridge District Central  
 Engineer W. J. ...  
 Engineer's Registration No. 1227  
 File No. \_\_\_\_\_ Drawing No. \_\_\_\_\_  
 Date Feb. 10, 1967 Scale 1" = 320' = 495'

STATE OF WEST VIRGINIA  
 DEPARTMENT OF MINES  
 OIL AND GAS DIVISION  
 CHARLESTON

WELL LOCATION MAP  
 FILE NO. 000-1439-P

+ Denotes location of well on United States Topographic Maps, scale 1 to 62,500, latitude and longitude lines being represented by border lines as shown.

- Denotes one inch spaces on border line of original tracing.



STATE OF WEST VIRGINIA  
DEPARTMENT OF MINES  
OIL AND GAS DIVISION 2

Rotary   
Spudder   
Cable Tools   
Storage

Quadrangle West Union

WELL RECORD

Oil or Gas Well Oil & Gas  
(KIND) Flow

Permit No. DOD-1439

Company Farrell L. Prior  
Address 224 Washington Blvd., Belpre, Ohio  
Farm F. Mason Acres 50.25  
Location (waters) \_\_\_\_\_  
Well No. 1 Elev. 1057  
District Central County Doddridge  
The surface of tract is owned in fee by F. Mason  
Address West Union, W. Va.  
Mineral rights are owned by F. Mason  
Address West Union, W. Va.  
Drilling commenced March 30, 1967  
Drilling completed May 11, 1967  
Date Shot \_\_\_\_\_ From \_\_\_\_\_ To \_\_\_\_\_  
With \_\_\_\_\_  
Open Flow \_\_\_\_\_ /10ths Water in \_\_\_\_\_ Inch  
\_\_\_\_\_ /10ths Merc. in \_\_\_\_\_ Inch  
Volume \_\_\_\_\_ Cu. Ft.  
Rock Pressure \_\_\_\_\_ lbs. \_\_\_\_\_ hrs.  
Oil \_\_\_\_\_ bbls., 1st 24 hrs.  
WELL ACIDIZED 500 Gallons MCA

Casing and Tubing	Used in Drilling	Left in Well	Packers
Size			
<del>xx</del> 14	20' 3"	20' 3"	Kind of Packer
13.			
10.			Size of
<del>xxx</del> 8 5/8	1158'		Depth set
<del>xxx</del> 7"	1783'		
5 3/16			
<del>xx</del> 4 1/2		2226	Perf. top <u>2157</u>
2			Perf. bottom <u>2177</u>
Liners Used			Perf. top _____
			Perf. bottom _____

CASING CEMENTED 4 1/2 SIZE 2226 No. Ft. 5/12/67 Date

COAL WAS ENCOUNTERED AT \_\_\_\_\_ FEET \_\_\_\_\_ INCHES  
\_\_\_\_\_ FEET \_\_\_\_\_ INCHES \_\_\_\_\_ FEET \_\_\_\_\_ INCHES  
\_\_\_\_\_ FEET \_\_\_\_\_ INCHES \_\_\_\_\_ FEET \_\_\_\_\_ INCHES

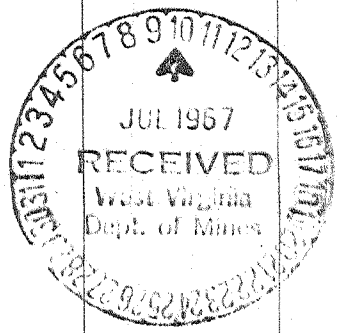
WELL FRACTURED 605 Barrels Water and 200 Sacks Sand

RESULT AFTER TREATMENT 5 Barrels per day *Big Injun*

ROCK PRESSURE AFTER TREATMENT 225 Lbs.

Fresh Water \_\_\_\_\_ Feet Salt Water \_\_\_\_\_ Feet

Formation	Color	Hard or Soft	Top	Bottom	Oil, Gas or Water	Depth	Remarks
and			0	20			
ed rock			20	129			
late			129	143			
and			143	160			
ed rock			160	170			
late and lime			170	192			
and			192	235			
late and lime			235	276			
ed rock			276	287			
late and shells			287	304			
and			304	310			
late and lime			310	376			
ed rock			376	385			
late and shells			385	415			
ed rock			415	440			
lime			440	459			
and			459	473			
ed rock and lime			473	495			
late and lime			495	590			
ed rock and lime			590	672			
late and shells			672	691			
and			691	725			
late and lime			725	734			
and			734	763			
ed rock and lime			763	775			
late and lime			775	800			
lime		Hard	800	820			
late			820	900			
and		Hard	900	915			
late and lime			915	922			



(over)

Formation	Color	Hard or Soft	Top	Bottom	Oil, Gas or Water	Depth Found	Remarks
Red Rock			922	960			
Lime			960	996			
Red rock			996	1030			
Lime & slate			1030	1050			
Lime		Hard	1050	1072			
Red rock			1072	1080			
Lime & slate			1080	1116			
Black slate			1116	1138			
Red rock			1138	1150			
Lime			1150	1162			
Red rock			1162	1180			
Slate & shells			1180	1306			
Lime			1306	1335			
Sand			1335	1370			
Lime & slate			1370	1470			
Sand			1470	1540			
Slate & lime			1540	1581			
Black slate			1581	1589			
Lime			1589	1612			
Sand			1612	1640			
Slate			1640	1744			
Sand			1744	1775			
Slate			1775	1783			
Sand			1783	1825			
Lime			1825	1856			
Slate & shells			1856	1923			
Sand - Maxon			1923	1961			
Slate			1961	1964			
Lime			1964	1986			
Slate			1986	2036			
Lime			2036	2052			
Slate			2052	2056			
Lime <i>Big Lime</i>			2056	2140			
Sand <i>Big Finjun</i>			2140	2183			
Slate			2183	2226			

TD

Date July 7, 1967

APPROVED Harold S. Grier, Owner

By \_\_\_\_\_ (Title)