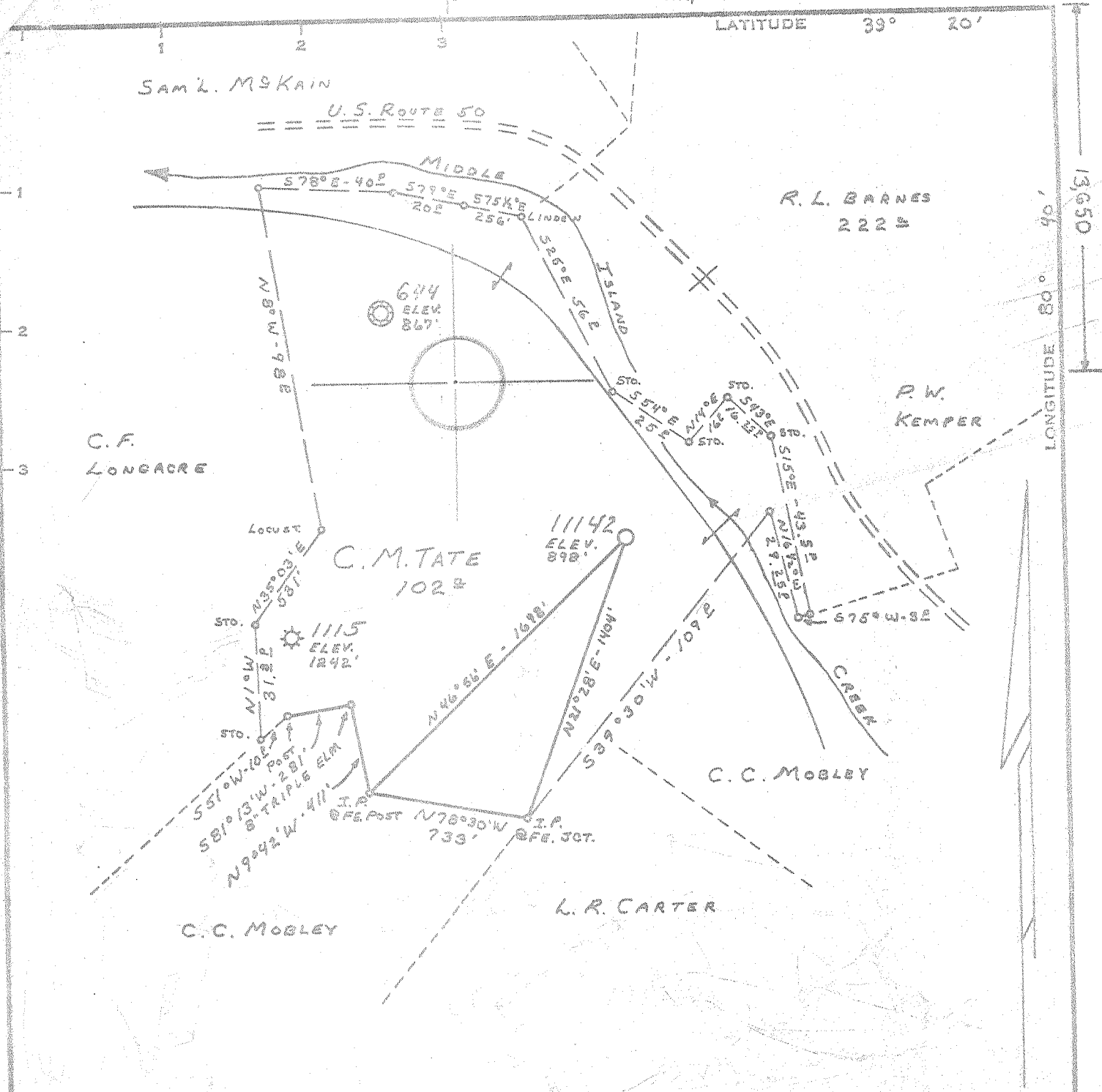


22,375

LATITUDE 39° 20'

LONGITUDE 80° 40'



Minimum Error of Closure 1' IN 200'
 Source of Elevation B. M. - U.S.C. F.G.S. STANDARD DISC B-81-1943
ELEV. 797'

"I, the undersigned, hereby certify that this map is correct to the best of my knowledge and belief and shows all the information required by paragraph 6 of the rules and regulations of the oil and gas section of the mining laws of West Virginia."

J 258
W 4.30

REVISED
 New Location
 Drill Deeper
 Abandonment

MAP SHEET 60 S-10, W-8

F.B. 1526 PG. 20
F.B. 1497 PG. 34-35

Company CONSOLIDATED GAS SUPPLY CORP.
 Address CLARKSBURG, W. VA.
 Farm C. M. TATE
 Tract _____ Acres 102[±] Lease No. 4404
 Well (Farm) No. *1115 - *644 A&B Serial No. 11142
 Elevation (Spirit Level) 898'
 Quadrangle CENTERPOINT SW
 County DOODRIDGE District WEST UNION
 Engineer Jackson M. Jarvis
 Engineer's Registration No. 2397
 File No. _____ Drawing No. _____
 Date 3-10-69 Scale 1" = 660'

STATE OF WEST VIRGINIA
 DEPARTMENT OF MINES
 OIL AND GAS DIVISION
 CHARLESTON

WELL LOCATION MAP
 FILE NO. DOD-1549-REX.

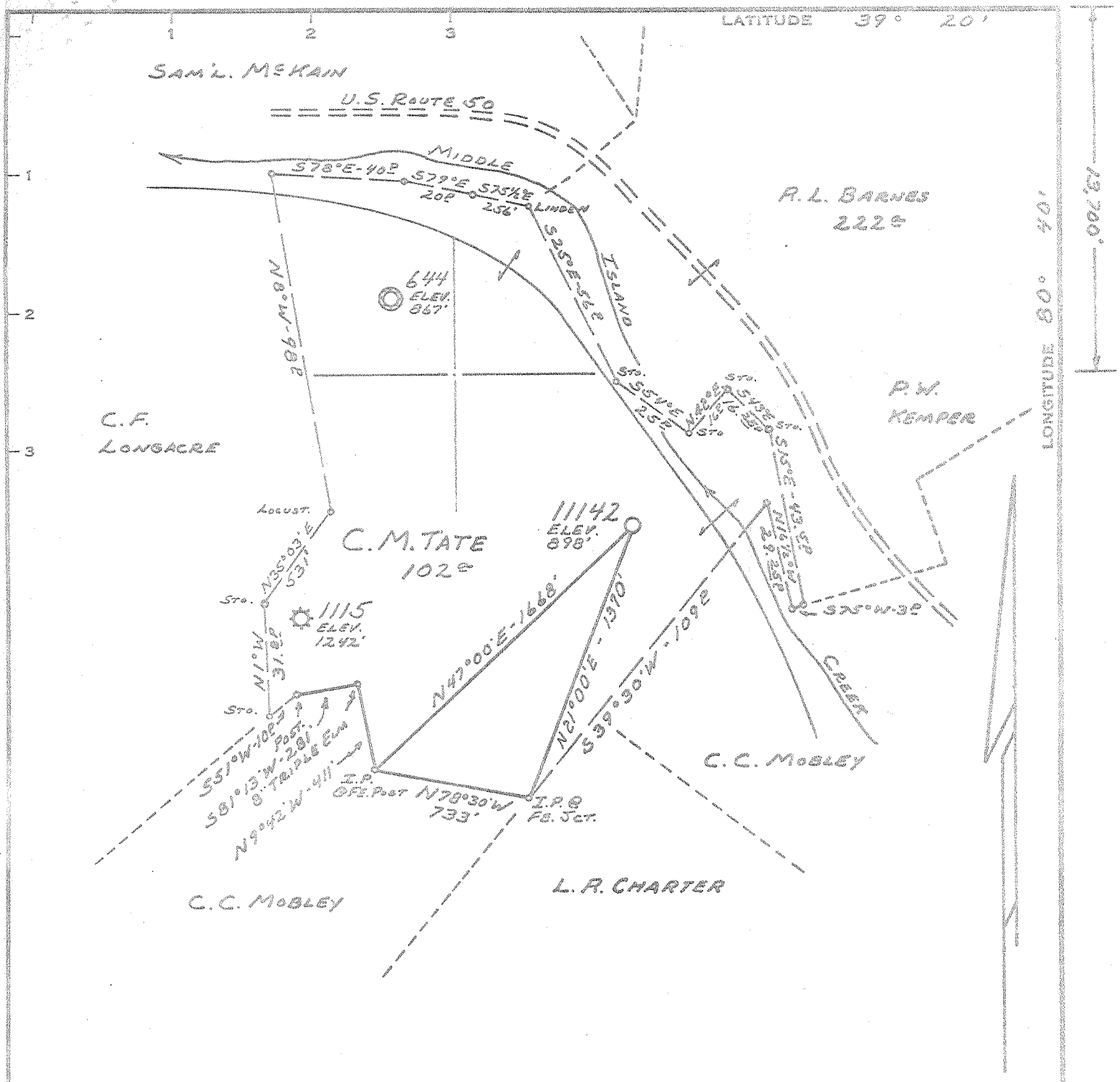
+ Denotes location of well on United States Topographic Maps, scale 1 to 62,500, latitude and longitude lines being represented by border lines as shown.
 - Denotes one inch spaces on border line of original tracing.

22,400'

LATITUDE 39° 20'

LONGITUDE 80° 40'

19,200'



Minimum Error of Closure 1' IN 200'
 Source of Elevation B.M. - U.S.C. & G.S. STANDARD DISC. B-81-1943
ELEV. 797'
 "I, the undersigned, hereby certify that this map is correct to the best of my knowledge and belief and shows all the information required by paragraph 6 of the rules and regulations of the oil and gas section of the mining laws of West Virginia."

- New Location
- Drill Deeper
- Abandonment

MAP SHEET 60 S-10, W-8 F.B. 1497 PG. 34-35

Company CONSOLIDATED GAS SUPPLY CORP
 Address CLARKSBURG, W. VA.
 Farm C. M. TATE
 Tract Acres 102[±] Lease No. 4404
 Well (Farm) No. #1115 - #644 ADD. Serial No. 11142
 Elevation (Spirit Level) 898'
 Quadrangle CENTERPOINT SW
 County DODDRIDGE District WEST UNION
 Engineer Jackson M. Jorva
 Engineer's Registration No. 2397
 File No. Drawing No.
 Date 3-10-69 Scale 1" = 660'

STATE OF WEST VIRGINIA
 DEPARTMENT OF MINES
 OIL AND GAS DIVISION
 CHARLESTON

WELL LOCATION MAP
 FILE NO. Dod-1549

+ Denotes location of well on United States Topographic Maps, scale 1 to 62,500, latitude and longitude lines being represented by border lines as shown.
 - Denotes one inch spaces on border line of original tracing.

WR-35
Rev (5-01)

DATE: 06/17/2005
API #: 47 017 01549F

State of West Virginia
Department of Environmental Protection
Office of Oil and Gas

Handwritten initials

Well Operator's Report of Well Work

Farm name: Cantrell, Danny & Barbara Operator Well No.: DTI 11142

LOCATION: Elevation: 910' Quadrangle: Smithburg 7.5'

District: West Union County: Doddridge
Latitude: 13,535 Feet South of 39 Deg. 20 Min. 00 Sec.
Longitude 10,650 Feet West of 80 Deg. 42 Min. 30 Sec.

Company: Dominion Transmission, Inc

| | Casing & Tubing | Used in drilling | Left in well | Cement fill up Cu. Ft. |
|--|-----------------|------------------|--------------|------------------------|
| Address: 445 W Main Street Clarksburg, WV 26301 | | | | |
| Agent: James D. Blasingame | | | | |
| Inspector: Mike Underwood | | | | |
| Date Permit Issued: 08/30/2004 | | | | |
| Date Well Work Commenced: | | | | |
| Date Well Work Completed: 06/01/2005 | | | | |
| Verbal Plugging: N/A | | See | Previous | WR-35 for |
| Date Permission granted on: N/A | | existing | Casing prog. | |
| Rotary X Cable Rig | | | | |
| Total Depth (feet): | | | | |
| Fresh Water Depth (ft.): N/A | | | | |
| Salt Water Depth (ft.): N/A | | | | |
| Is coal being mined in area (N/Y)? N | | | | |
| Coal Depths ft.): N/A | | | | |

OPEN FLOW DATA

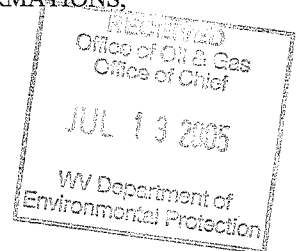
Producing formation Keener 1723-1733'
Blue Monday Pay zone depth (ft) 1639-1649'
Gas: Initial open flow - MCF/d Oil: Initial open flow 0 Bbl/d
Final open flow 42 MCF/d Final open flow 0 Bbl/d
Time of open flow between initial and final tests 12 Hours
Static rock Pressure 30 psig (surface pressure) after 12 Hours

*Commingled with previous formations

Second producing formation _____ Pay zone depth (ft) _____
Gas: Initial open flow _____ MCF/d Oil: Initial open flow _____ Bbl/d
Final open flow _____ MCF/d Final open flow _____ Bbl/d
Time of open flow between initial and final tests _____ Hours
Static rock Pressure _____ psig (surface pressure) after _____ Hours

NOTE: ON BACK OF THIS FORM PUT THE FOLLOWING: 1). DETAILS OF PERFORATED INTERVALS, FRACTURING OR STIMULATING, PHYSICAL CHANGE, ETC. 2). THE WELL LOG WHICH IS A SYSTEMATIC DETAILED GEOLOGICAL RECORD OF ALL FORMATIONS, INCLUDING COAL ENCOUNTERED BY THE WELLBORE.

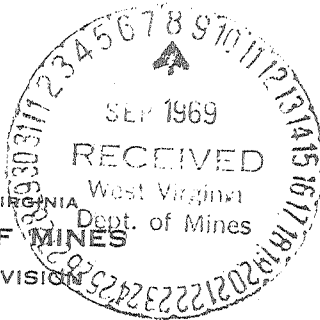
Signed: James D. Blasingame
By: James D. Blasingame
Date: 7/6/05



NR

DODD 1549 F

AUG 26 2005



STATE OF WEST VIRGINIA
DEPARTMENT OF MINES
OIL AND GAS DIVISION

- Rotary
- Spudder
- Cable Tools
- Storage

Quadrangle CENTERPOINT
Permit No. DOD-1549-Rev

WELL RECORD

Oil or Gas Well (GAS)
(KIND)

Company Consolidated Gas Supply Corporation
Address 445 W. Main St., Clarksburg, W. Va.
Farm C. M. Tate Acres 102
Location (waters)
Well No. 11142 Elev. 898
District West Union County Doddridge
The surface of tract is owned in fee by
Address
Mineral rights are owned by
Address
Drilling commenced 5-14-69
Drilling completed 6-12-69
Date Shot Not Shot From To

| Casing and Tubing Size | Used in Drilling | Left in Well | Packers |
|------------------------|------------------|--------------|--------------------------|
| 16 | | | Kind of Packer |
| 13 | 62 | 62 | |
| 10 | 336 | 336 | Size of |
| 8 1/4 | 1112 | 1112 | |
| 6 5/8 | | | Depth set |
| 5 3/16 | | | |
| 4 1/2 | 1938 | 1938 | |
| 3 | | | Perf. top <u>1768</u> |
| 2 | | | Perf. bottom <u>1788</u> |
| Liners Used | | | Perf. top |
| | | | Perf. bottom |

Open Flow 10ths Water in Inch
10ths Merc. in Inch
Volume 16 M Natural Cu. Ft.
Rock Pressure 180 lbs. 1 hrs.

Attach copy of cementing record.
CASING CEMENTED 4 1/2" csg. w/130 bags SIZE No. Ft. Date
Amount of cement used (bags) 130 Name of Service Co. Halliburton

1637' Show Only bbls. 1st 24 hrs.
ACIDIZED (DETAILS) No
FRACTURED (DETAILS) 6-16-69 with 800 bbls. water, 500 gals. acid, 60,000# sand, & 2500 HBE.

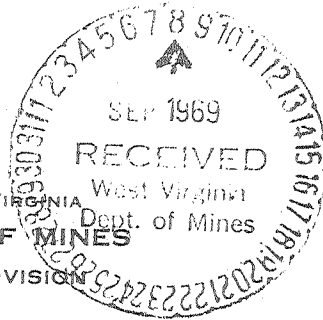
COAL WAS ENCOUNTERED AT None FEET INCHES
FEET INCHES
FEET INCHES
FEET INCHES

AFTER TREATMENT (Initial open flow or bbls.) 2 1/4 1/4 v" or
PRESSURE AFTER TREATMENT 190# H2O00S 14 days
105' 200' Feet
Injun Salt Water

730,000 730 MCFGPD

| Color | Hard or Soft | Top | Bottom | Oil, Gas or Water | Depth | Remarks |
|-------|--------------|------|--------|-------------------|-------|----------|
| | | 0 | 50 | | | |
| | | 50 | 105 | | | |
| | | 105 | 235 | | | |
| | | 235 | 425 | Water | | |
| | | 425 | 440 | Water | 105' | Fresh |
| | | 440 | 711 | | 200' | Fresh |
| | | 711 | 1155 | | | |
| | | 1155 | 1242 | | | |
| | | 1242 | 1275 | | | |
| | | 1275 | 1318 | | | |
| | | 1318 | 1370 | | | |
| | | 1370 | 1485 | | | |
| | | 1485 | 1614 | Gas | 1450' | Show |
| | | 1614 | 1634 | | | |
| | | 1634 | 1637 | | | |
| | | 1637 | 1652 | Oil | 1637' | Show |
| | | 1652 | 1729 | | | |
| | | 1729 | 1855 | | | |
| | | 1855 | 1947 | Gas & Oil | 1729' | Show Oil |
| | | 1947 | 1947 | | | |

Consolidated Gas Supply Corporation
445 W. Main St., Clarksburg, W. Va.
September 5, 1969



STATE OF WEST VIRGINIA
DEPARTMENT OF MINES
OIL AND GAS DIVISION

Rotary
Spudder
Cable Tools
Storage

Quadrangle.....CENTERPOINT

Permit No.....DOD-1549-Rev

WELL RECORD

Oil or Gas Well (GAS)
(KIND)

Company Consolidated Gas Supply Corporation
Address 445 W. Main St., Clarksburg, W. Va.
Farm C. M. Tate Acres 102
Location (waters) _____
Well No. 11142 Elev. 898
District West Union County Doddridge
The surface of tract is owned in fee by _____
Address _____

Mineral rights are owned by _____
Address _____

Drilling commenced 5-14-69
Drilling completed 6-12-69

Date Shot Not Shot From _____ To _____
With _____

Open Flow 1/10ths Water in _____ Inch
1/10ths Merc. in _____ Inch

Volume 16 M Natural _____ Cu. Ft.
Rock Pressure 180 lbs. 1 hrs.

Oil 1637' Show Only _____ bbls., 1st 24 hrs.
WELL ACIDIZED (DETAILS) No

WELL FRACTURED (DETAILS) 6-16-69 with 800 bbls. water, 500 gals. acid, 60,000# sand, & 2500 HHP.

RESULT AFTER TREATMENT (Initial open Flow or bbls.) 2 1/2 Hrs. @ 140' or 730,000 730 MCFGPD

ROCK PRESSURE AFTER TREATMENT 190# XXXXX 14 days

Fresh Water 105' 200' Feet
Producing Sand Injun Depth 1768-1788'

| Casing and Tubing | Used in Drilling | Left in Well | Packers |
|-------------------|------------------|--------------|---------------------------------------|
| Size | | | Kind of Packer |
| 16 | | | |
| 13 | 62 | 62 | |
| 10 | 336 | 336 | Size of |
| 8 1/4 | 1112 | 1112 | |
| 6 3/4 | | | Depth set |
| 5 3/16 | | | |
| 4 1/2 | 1938 | 1938 | |
| 3 | | | Perf. top <u>1768</u> |
| 2 | | | Perf. bottom <u>1788</u> |
| Liners Used | | | Perf. top _____ Perf. bottom _____ |

Attach copy of cementing record.
CASING CEMENTED _____ SIZE _____ No. Ft. _____ Date _____
Amount of cement used (bags) 4 1/2" csg. w/130 bags--Halliburton
Name of Service Co. Halliburton
COAL WAS ENCOUNTERED AT None FEET _____ INCHES _____
FEET _____ INCHES _____ FEET _____ INCHES _____
FEET _____ INCHES _____ FEET _____ INCHES _____

| Formation | Color | Hard or Soft | Top | Bottom | Oil, Gas or Water | Depth | Remarks |
|------------------|-------|--------------|------|--------|-------------------|-------|----------|
| Sand & Shale | | | 0 | 50 | | | |
| Slate & Red Rock | | | 50 | 105 | | | |
| Sand & Lime | | | 105 | 235 | Water | 105' | Fresh |
| Slate & Shale | | | 235 | 425 | Water | 200' | Fresh |
| Lime | | | 425 | 440 | | | |
| Sand & Shale | | | 440 | 711 | | | |
| Slate & Shells | | | 711 | 1155 | | | |
| 1st Salt | | | 1155 | 1242 | | | |
| Lime | | | 1242 | 1275 | | | |
| 2nd Salt | | | 1275 | 1318 | | | |
| Slate | | | 1318 | 1370 | | | |
| 3rd Salt | | | 1370 | 1485 | Gas | 1450' | Show |
| Sand & Slate | | | 1485 | 1614 | | | |
| Little Lime | | | 1614 | 1634 | | | |
| Slate | | | 1634 | 1637 | Oil | 1637' | Show |
| Blue Monday | | | 1637 | 1652 | | | |
| Big Lime | | | 1652 | 1729 | | | |
| Injun | | | 1729 | 1855 | Gas & Oil | 1729' | Show Oil |
| Slate & Shells | | | 1855 | 1947 | | | |
| TD | | | | 1947 | | | |

Consolidated Gas Supply Corporation
445 W. Main St., Clarksburg, W. Va.
September 5, 1969