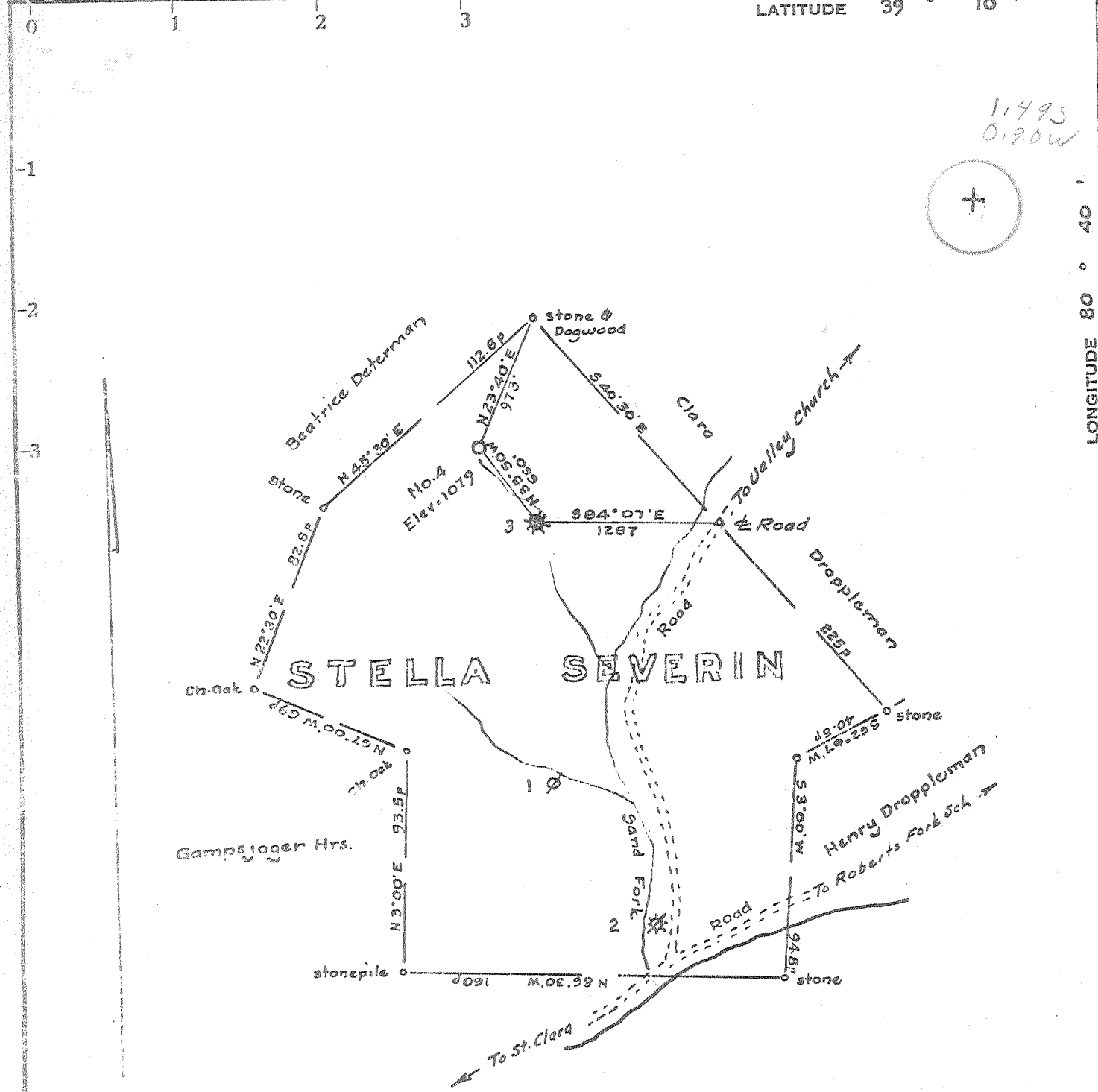
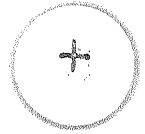


1,495
0,90W



Minimum Error of Closure 1 in 200

Source of Elevation Elev. Well No 2 - Plugged = 887

- Fracture
- New Location
- Drill Deeper
- Abandonment

I, the undersigned, hereby certify that this map is correct to the best of my knowledge and belief and shows all the information required by paragraph 6 of the rules and regulations of the oil and gas section of the mining laws of West Virginia.

Signed: W. H. J.
Squares: N S E W

Map No.

Company JOHN R. WARREN, dba Warren Drilg. Co.
 Address United Founders Tower, Oklahoma City
 Farm Stella Severn
 Tract _____ Acres 265.54 Lease No. _____
 Well (Farm) No. Four Serial No. _____
 Elevation (Spirit Level) 1079
 Quadrangle Vadis WC
 County Doddridge District Cove
 Engineer W. H. J.
 Engineer's Registration No. 1227
 File No. _____ Drawing No. _____
 Date June 16, 1970 Scale 1" = 600' = 990'

STATE OF WEST VIRGINIA
DEPARTMENT OF MINES
OIL AND GAS DIVISION
CHARLESTON

WELL LOCATION MAP

FILE NO. DOD - 1592

+ Denotes location of well on United States Topographic Maps, scale 1 to 62,500, latitude and longitude lines being represented by border lines as shown.

- Denotes one inch spaces on border line of original tracing.



STATE OF WEST VIRGINIA
DEPARTMENT OF MINES
OIL AND GAS DIVISION 3

- Rotary
- Spudder
- Cable Tools
- Storage

Gas
W. NO. 1

39-15
4-24

Vadis SW

WELL RECORD

Oil or Gas Well Comb. (KIND)

Permit No. DOD - 1592

Company JOHN R. WARREN DBA WARREN DRG. CO.
 Address 1215 United Founders Building
 Oklahoma City, Oklahoma 73112
 Name Stella Severin Acres 265.54
 Location (waters) Roberts Fork
 Well No. 4 Elev. 1079'
 District Cove County Doddridge
 The surface of tract is owned in fee by Ashcraft
 Address St Clara, W.Va.
 Mineral rights are owned by Stella Severin et al
 Address New Milton, W.Va.
 Drilling commenced July 10, 1970
 Drilling completed October 24, 1970
 Rate Shot None From To

Casing and Tubing Size	Used in Drilling	Left in Well	Packers
16			Kind of Packer
13			
10	147	147	Size of
8 1/4	1116		
6 3/4	1626		Depth set
5 3/16			
4 1/2	2263	2263	
3			Perf. top
2			Perf. bottom
Liners Used			Perf. top
			Perf. bottom

Open Flow /10ths Water in show Inch
 /10ths Merc. in Inch
 Volume Cu. Ft.
 Back Pressure lbs. hrs.
 bbls., 1st 24 hrs.

Attach copy of cementing record.
 CASING CEMENTED 4 1/2" SIZE 250' No. Ft. 10/26/70 Date
 Amount of cement used (bags) 50 sks. Type I
 Name of Service Co. Halliburton
 COAL WAS ENCOUNTERED AT FEET INCHES
 FEET INCHES FEET INCHES
 FEET INCHES FEET INCHES

WELL FRACTURED (DETAILS) Big Injun-15000# 20-40, 30000#10-20 sand; 28.4BPM at 2126 psi
 Blue Monday-14000# 20-40 sand 25.7 at 2313 psi
 RESULT AFTER TREATMENT (Initial open flow or bbls.) 850 mcf + 1/2 BOPD
 BACK PRESSURE AFTER TREATMENT 675 HOURS 18
 Fresh Water 20 Feet Salt Water 2032' Feet
 Producing Sand Big Injun & Blue Monday Depth 2248-55' 2086-2137'

Formation	Color	Hard or Soft	Top	Bottom	Oil, Gas or Water	Depth	Remarks
soil			0	15			
sand			15	65			
red rock			65	85			
lime			85	135			
slate			135	195			
red rock			195	302			
slate			302	318			
red rock			318	525			
sand			525	590			
lime			590	652			
slate			652	680			(?)
red rock			680	695			
slate			695	725			
lime			725	745			
sand			745	814			
red rock		soft	814	958			cave
slate&shells			958	980			
sandy lime			980	1008			
slate	pink	soft	1008	1072			
red rock			1072	1082			
slate		soft	1082	1112			
sand			1112	1212			
slate			1212	1214	OVER		

RECEIVED
NOV 23 1970

Formation	Color	Hard or Soft	Top 3	Bottom	Oil, Gas or Water	Depth Found	Remarks
lime			1214	1260			
sand			1260	1315			
slate&shell			1315	1400			
lime			1400	1449			
lime	black		1449	1532			
sand			1532	1614			
slate			1614	1620			
lime			1620	1705			
sand			1705	1730			
slate&Lime			1730	1847			
sand			1847	1885			
slate			1885	1949			
sand			1949	1960			
red rock			1960	2020			
sand			2020	2044			
lime			2044	2086	Water	2032	hole full
slate			2086	2092			
sand			2092	2148	Gas	2107	
lime			2148	2188	Oil	2111	
sand			2188	2258	Gas	2194'	
slate			2258	2286			
TD			2286				

Date Nov. 21, 1970

APPROVED BY: Warren Drilling Company, Owner

By: _____ (Title)