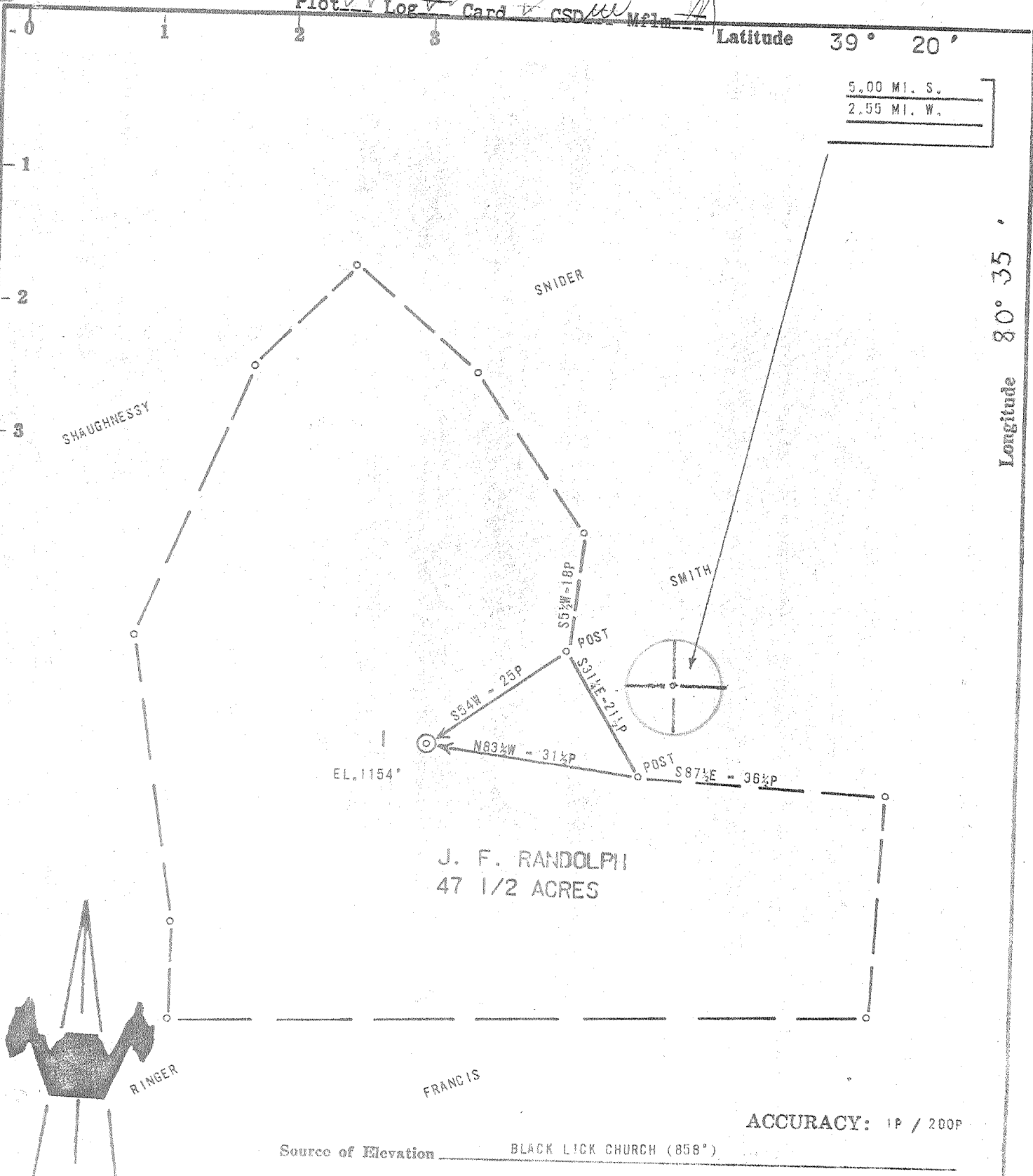


Latitude 39° 20'

5.00 MI. S.
2.55 MI. W.

Longitude 80° 35'



EL. 1154'

J. F. RANDOLPH
47 1/2 ACRES

ACCURACY: 1P / 200P

Source of Elevation BLACK LICK CHURCH (858')

- New Location
- Drill Deeper
- Abandonment
- Fracture
- Redrill

I, the undersigned, hereby certify that this map is correct to the best of my knowledge and belief and shows all the information required by paragraph 6 of the rules and regulations of the oil and gas section of the mining laws of West Virginia.

Chet Waterman

Company JOHN WARREN, DBA WARREN DRILLING COMPANY
 Address OKLAHOMA CITY, OKLA.
 Farm J. F. RANDOLPH
 Tract Acres 47 1/2 Lease No. _____
 Well (Farm) No. 1 Serial No. _____
 Elevation (Spirit Level) 1154'
 Quadrangle CENTERPOINT SC
 County BOURBON District GREENBRIER
 Engineer CHET WATERMAN
 Engineer's Registration No. 3788
 File No. 70003-408 Drawing No. _____
 Date 10/8/70 Scale 1" = 200'

STATE OF WEST VIRGINIA
DEPARTMENT OF MINES
OIL AND GAS DIVISION
CHARLESTON

WELL LOCATION MAP
FILE NO. D20-1600

+ Denotes location of well on United States Topographic Maps, scale 1 to 62,500, latitude and longitude lines being represented by border lines on charts.

Denotes one inch squares on border line of original tracing.



STATE OF WEST VIRGINIA
DEPARTMENT OF MINES
OIL AND GAS WELLS DIVISION

MAR 5 1971

Rotary
Spudder
Cable Tools
Storage

C. NOLL

Oil or Gas Well GAS
(KIND)

WELL RECORD

Quadrangle Centerpoint se

Permit No. DOD--1600

Company JOHN R. WARREN DBA WARREN DRG. CO.
Address 1215 UNITED FOUNDERS TOWER
OKLAHOMA CITY, OKLAHOMA 73112
Farm J.F. Randolph Acres 47.5a
Location (waters) Buffalo Calf Creek
Well No. One (1) Elev. 1154'
District Greenbrier County Doddridge
The surface of tract is owned in fee by Mr. Howard Davis
Address Salem, W. Va.
Mineral rights are owned by A.C. Ballouz Hrs.
Address New Martinsville WVa

Drilling commenced 1/9/71
Drilling completed 1/11/71
Date Shot none From To
With none

Open Flow 48/10ths Water in 5/8 Inch
 /10ths Merc. in Inch
Volume 63 Cu. Ft.
Rock Pressure Unknown lbs. hrs.
Oil smell bbls., 1st 24 hrs.
WELL ACIDIZED (DETAILS) no

WELL FRACTURED (DETAILS) 963 Bbls. water, 30000# 10-20 sand, 36.45 B/min. at 1906 psi

RESULT AFTER TREATMENT (Initial open Flow or bbls.) 1,988,000 cu. ft. /day 1,988 MCFGPD

ROCK PRESSURE AFTER TREATMENT 388 psi HOURS 24

Fresh Water 283 show Feet Salt Water Feet

Producing Sand Big Injun Depth 2330-2390'

Casing and Tubing	Used in Drilling	Left in Well	Packers
Size			Kind of Packer
16			
13			
10			Size of
8 1/4	959	959 --	250 sks. Type A
6 3/4			2% CaCl2-To Sur.
5 3/16			Depth 1st
4 1/2	2406	2406	
3			Perf. top
2			Perf. bottom
Liners Used			Perf. top <u>2361</u>
			Perf. bottom <u>2365'</u>

Attach copy of cementing record.
CASING CEMENTED 4 1/2 SIZE 2406 No. Fl. 1/12/71 Date
Amount of cement used (bags) 75 sks. / 1/2 #Floceal/sk.
Name of Service Co. Halliburton
COAL WAS ENCOUNTERED AT 930 FEET 48 INCHES
(18g)
FEET INCHES FEET INCHES
FEET INCHES FEET INCHES

Formation	Color	Hard or Soft	Top	Bottom	Oil, Gas or Water	Depth	Remarks
surface			0	5			
sand & RR			5	143			
sand			143	165			
red rock & shale			165	298			
sand			298	335			
slate			335	375			
lime			375	410			
slate & red rock			410	540			
sand			540	580			
slate, red rock			580	935			
coal			935	938			
shale			938	975			
sand			975	1005			
red rock & shale			1005	1280			
sand			1280	1305			
shale			1305	1340			
red rock & shale			1340	1605			
sand			1605	1650			
shale			1650	1670			
sand			1670	1720			
shale			1720	1788			
sand			1788	1825			
					over		

Formation	Color	Hard or Soft	Top /	Bottom	Oil, Gas or Water	Depth Found	Remarks
shale			1825	1870			
sand&shale			1870	1960			
sand			1960	2062			
shale			2062	2165			
sand			2165	2175			
shale			2175	2209			
lime			- 2209	2237			
shale			2237	2245			
lime			- 2245	2305			
sand <i>Big Injun</i>			2305	2390	gas	2344-70	Big Lime Big Injun
shale			2390	2435			
total depth			2435				

Date 2/27/71, 19

APPROVED WARREN DRILLING COMPANY

By *J. H. Cline* Consultant
(Title)