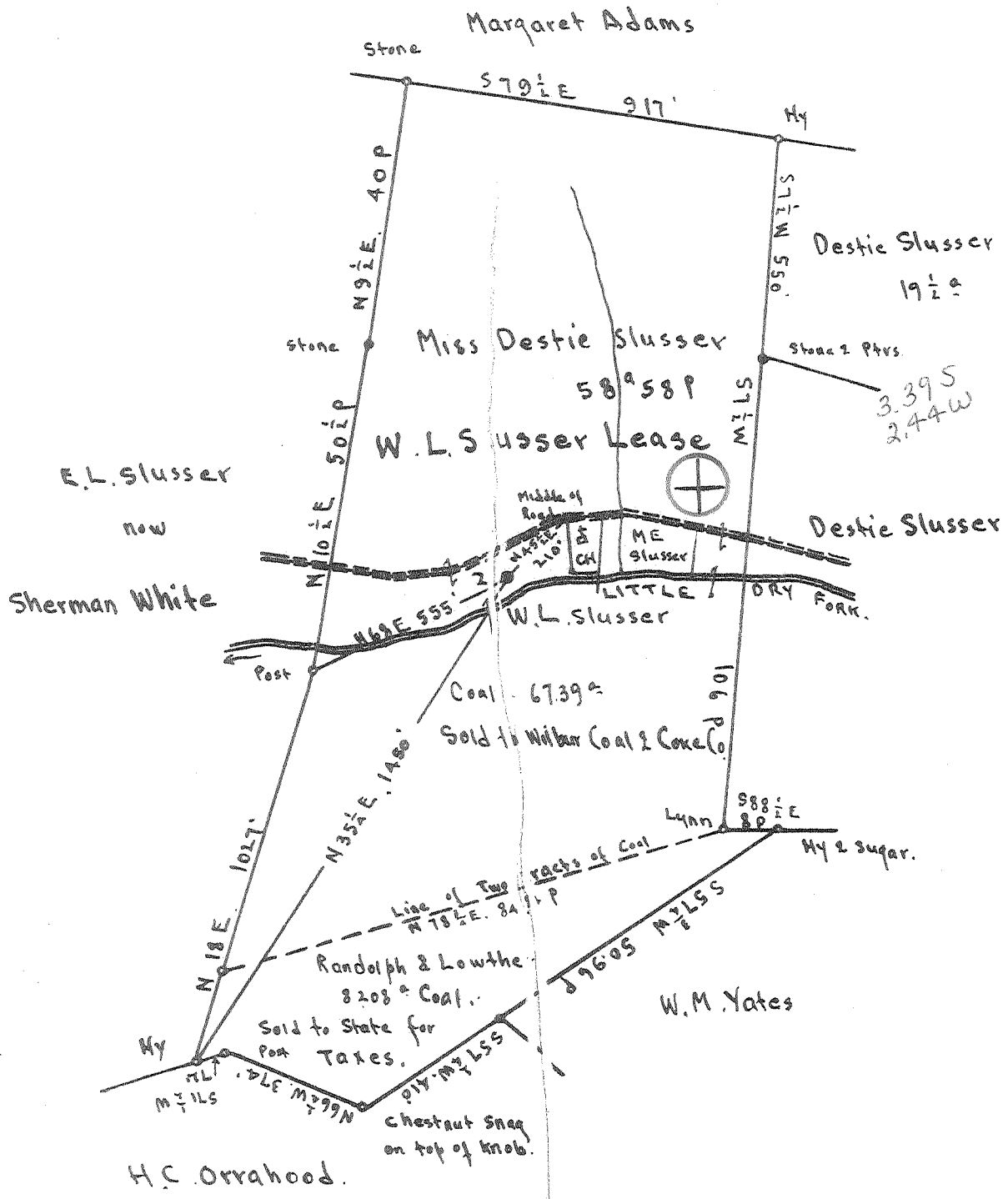


Latitude 39° 15'

Longitude 80° 30'

Scale 1" = 400 Feet



Surface: Miss Destie Slusser; Bi Isaac, Doddridge Co; W.Va.  
 Pittsburgh Coal: Formerly Wilbur Coal & Coke Co; Bethlehem Pa.  
 sold to state of W.Va. for Taxes in 1932. Title still in State of West Virginia.

- New Location...
- Drill Deeper...
- Abandonment...

On 400' Maps # 3852 & 3952, S 18-19 EA

Company GLENN L. HAUGHT & SONS  
 Address SMITHVILLE, WV 26178  
 Farm W.L. Slusser  
 Tract \_\_\_\_\_ Acres 76 2/3 a Lease No. \_\_\_\_\_  
 Well (Farm) No. 2 Serial No. \_\_\_\_\_  
 Elevation (Spirit Level) Floor - 974.00  
Ground - 972.50  
 Quadrangle VADIS NE  
 County DODDRIDGE District Greenbrier  
 Engineer E.C. Tabler  
 Engineer's Registration No. \_\_\_\_\_  
 File No. \_\_\_\_\_ Drawing No. \_\_\_\_\_  
 Date Feb 12<sup>th</sup> 1949 Scale 1" = 400 Feet

STATE OF WEST VIRGINIA  
 DEPARTMENT OF MINES  
 OIL AND GAS DIVISION  
 CHARLESTON

WELL LOCATION MAP

FILE NO. ~~DOD-615-A~~

N.W.: DOD-1785-RED-P

Denotes location of well on United States topographic Maps, scale 1 to 62,500, latitude and longitude lines being represented by border lines as shown.

Denotes one inch spaces on border line of original tracing.

47-017

AUG 6 1975



STATE OF WEST VIRGINIA  
DEPARTMENT OF MINES  
OIL AND GAS DIVISION

504

NOW: DODD  
1785-RED-P

WELL RECORD

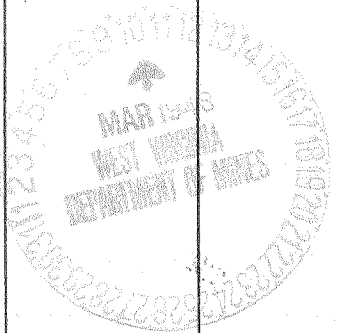
Permit No. \_\_\_\_\_ Oil or Gas Well \_\_\_\_\_ (KIND)

Company Bradford Supply Co.  
Address Box 572, Mattoon, Ill.  
Farm W.L. Slusser Acres 16 7/8  
Location (waters) \_\_\_\_\_  
Well No. Two Elev. 974  
District Greenbrier County Doddridge  
The surface of tract is owned in fee by \_\_\_\_\_  
Address \_\_\_\_\_  
Mineral rights are owned by \_\_\_\_\_  
Address \_\_\_\_\_  
Drilling commenced \_\_\_\_\_  
Drilling completed 1-1-1916  
Date Shot \_\_\_\_\_ From \_\_\_\_\_ To \_\_\_\_\_  
With \_\_\_\_\_  
Open Flow \_\_\_\_\_ /10ths Water in \_\_\_\_\_ Inch  
\_\_\_\_\_ /10ths Merc. in \_\_\_\_\_ Inch  
Volume \_\_\_\_\_ Cu. Ft.  
Rock Pressure \_\_\_\_\_ lbs. \_\_\_\_\_ hrs.  
Oil \_\_\_\_\_ bbls., 1st 24 hrs.  
Fresh water \_\_\_\_\_ feet \_\_\_\_\_ feet  
Salt water \_\_\_\_\_ feet \_\_\_\_\_ feet

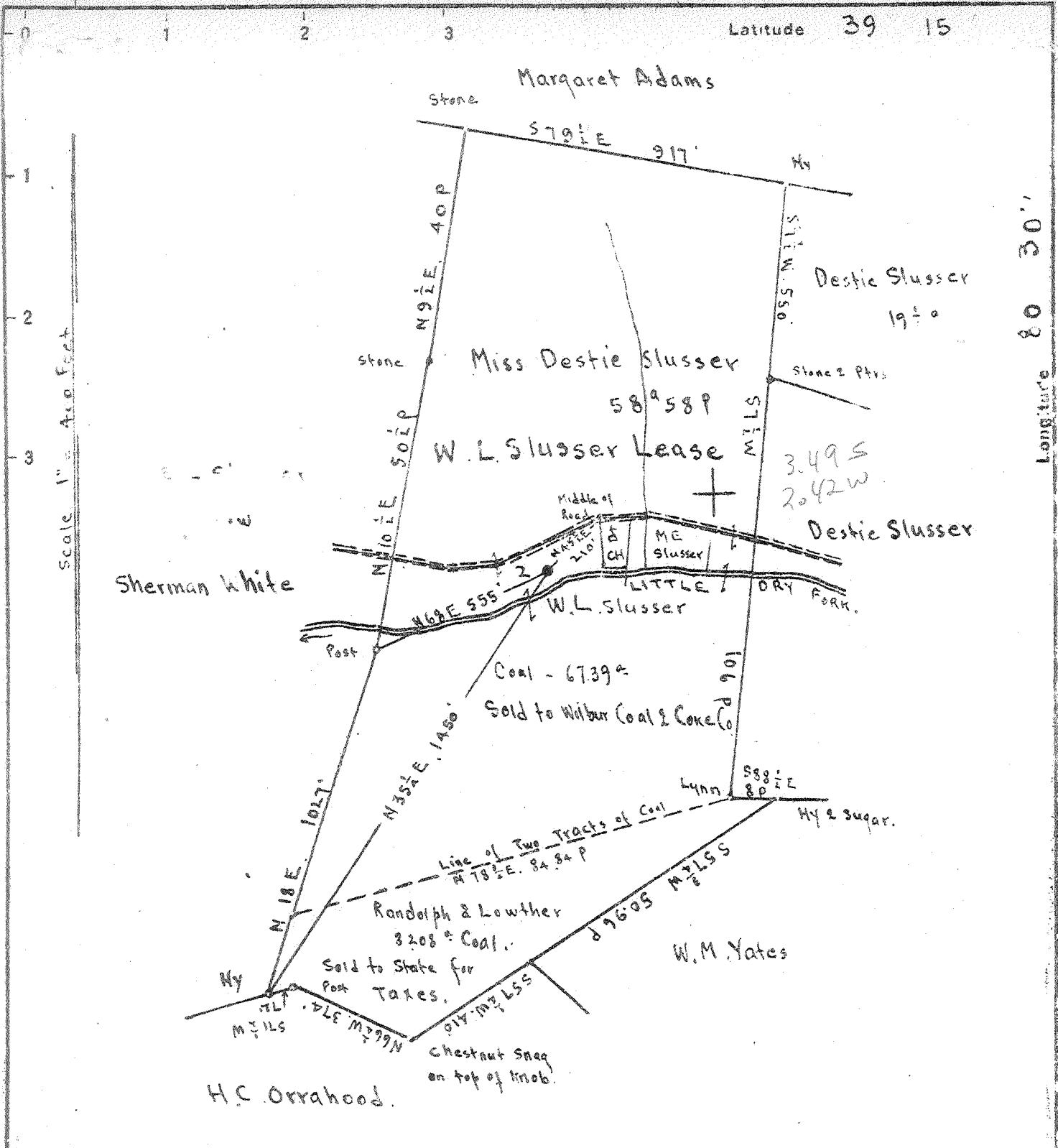
Casing and Tubing	Used in Drilling	Left in Well	Packers
Size			Kind of Packer
16			
13			
10	100'		Size of
8 1/2	825'		
6 5/8	1754'		Depth set
5 3/16			
3			Perf. top
2			Perf. bottom
Liners Used			Perf. top
			Perf. bottom

CASING CEMENTED \_\_\_\_\_ SIZE \_\_\_\_\_ No. Ft. \_\_\_\_\_ Date \_\_\_\_\_  
COAL WAS ENCOUNTERED AT 375 FEET 60 INCHES  
\_\_\_\_\_ FEET \_\_\_\_\_ INCHES \_\_\_\_\_ FEET \_\_\_\_\_ INCHES  
\_\_\_\_\_ FEET \_\_\_\_\_ INCHES \_\_\_\_\_ FEET \_\_\_\_\_ INCHES

Formation	Color	Hard or Soft	Top	Bottom	Oil, Gas or Water	Depth Found	Remarks
Pgh. Coal			375	380			
Lt. Dunkard.			728	798			
Big "			815	875			
1st. Salt			1179	1221			
2nd Salt.			1250	1485			
Maxon Sand.			1660	1670			
Big Lime.			1750	1804			
Big Injun.			1804	1923			
Gantz Sand			2157	2185			
30th Ft.			2350	2378			
Stray Sand.			2400	2422			
Gordon Sand.			2434	2466			
Total Depth.				2495			1st pay 2444-2449.







Surface: Miss Destie Slusser; Big Isaac, Doddridge Co.; W.Va.  
 Pittsburgh Coal: Formerly Wilbur Coal & Coke Co.; Bethlehem Pa.  
 Sold to state of W.Va. for Taxes in 1932. Title still in State of West Virginia.

- New Location
- Drill Deeper
- Abandonment

On 400' Maps # 3852 & 3952 S 18-19 E 4

Company Glenn Haight Bradford Supply Co., Inc.  
 Address Mattoon, Illinois  
 Farm W.L. Slusser  
 Tract \_\_\_\_\_ Acres 76 2/3 Lease No. \_\_\_\_\_  
 Well (Farm) No. 2 Serial No. \_\_\_\_\_  
 Elevation (Spirit Level) Floor - 974.00  
Ground - 972.50  
 Quadrangle VA015  
 County DODDRIDGE District Greenbrier  
 Engineer E.C. Tabler  
 Engineer's Registration No. \_\_\_\_\_  
 File No. \_\_\_\_\_ Drawing No. \_\_\_\_\_  
 Date Feb 12<sup>th</sup> 1949 Scale 1" = 400 Feet

STATE OF WEST VIRGINIA  
 DEPARTMENT OF MINES  
 OIL AND GAS DIVISION  
 CHARLESTON

WELL LOCATION MAP

FILE NO. DOD-613-A

NOW-DODD: 1785-Red-P

+ Denotes location of well on United States Topographic Maps, scale 1 to 62,500, latitude and longitude lines being represented by border lines as shown.

- Denotes one inch spaces on border line of original tracing.