

LATITUDE 39° 20' 00"



80° 37' 30"

LONGITUDE

7'5 OGIS topo location

7.5' loc 0.665
" 1.32 W

15' loc 0.665
(calc.) 3.55 W

Company _____

Farm _____

Elev. 990' - 7.5' topo bla 3/5/98
Centerpoint SC

Quad SMITHBURG 7 1/2'

County DODDRIIDGE

District GRANT

WELL LOCATION MAP

File No. 017-1959

HOPE NATURAL GAS COMPANY

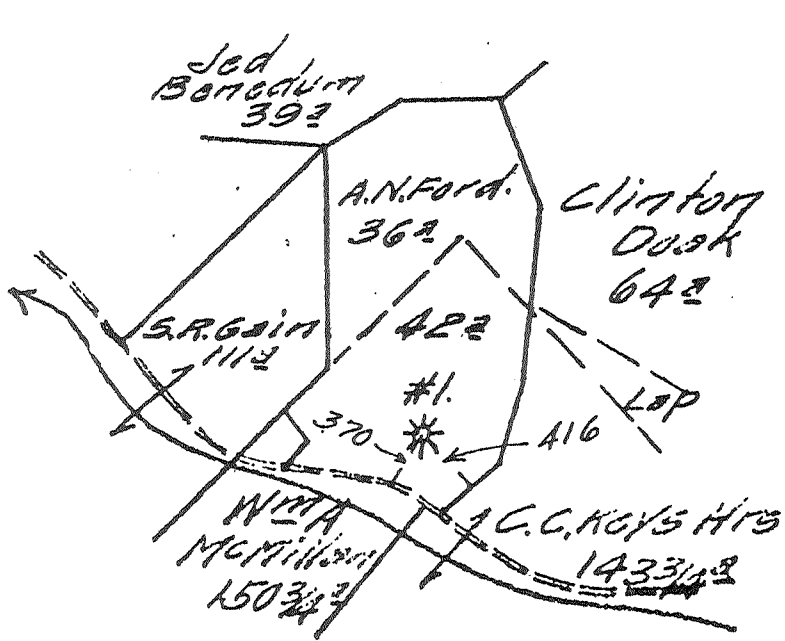
LOCATION FOR WELL No. *4842* *7-H*
Instructions *11*

On *above* Farm, on waters of *Bay*
 District, *Scott* County, West Virginia.

Lease No. *3326* Acres *78* N. S. *9* E. W. *3*
 Scale one inch equals *1/2* mile Location made in Pittsburgh *4-5-17* Sent to Clarksburg *4-26-17*

Location to be

017-1959



Well Book:
 Lease Book:
 Well Map *NOV 23 1917* J.C.L.
 Map Map *MAY 2 1911* A.S.D.
 APR 30 1917 E.H.S.

54

TITLE RESERVE

SPECIAL INSTRUCTIONS: COMPLETE WELL ON OR BEFORE

Same Lease on which Located Well No. *4842*

Location *Meas.* *4-4-17* by *G.H. Cunningham* As per plat, except as noted. On field map
4-5-17 Returned to Pittsburgh *4-5-17*

Location changed on account of

Authorized by _____ Date _____ Signed _____

Well No. 4842 ✓

REPAIR RECORD

Salem District

Farm Name A. N. Ford ✓

017-1959

N S 9 E W 3 ✓

Date First Work Done 2-22-56 ✓

Nature of Work Moving in tools ✓

Commenced:
Cleaning Out 2-22-56 (Hydrafrac) ✓
Drilling Deeper
Abandoning

Completed:
Cleaning Out 4-30-56 (Hydrafrac) ✓
Drilling Deeper
Abandoning

CASING AND TUBING RECORD

Size	Before Repairs		Pulled		Put in Well		After Repairs		Weight
	Tally	Steel Line	Tally	Steel Line	Tally	Steel Line	Tally	Steel Line	
7		1718	None		None			1718	
5-1/2	1756	1736	1756	1736	1772	1751	1772	1751	13 #
2-3/8	None			1719		1730		11(Abd)	

RECORD OF TREATING FORMATIONS

Date	Sand	DEPTH		TEST BEFORE			TEST AFTER			SHOT BY
		From	To	Read.	Liq.	Opp.	Read.	Liq.	Opp.	
				Quartz	Shooting Agent	Open or Tamped				

Date	Sand	DEPTH		Gallons	Acid Used	ACIDIZED BY
		From	To			

Date	Injur.	1820	1840	Bble.	Lbs.	Agent	Max. Press.	14/10 W	1	66/10 W	2	Halliburton
				28-56	Hydrafrac	Breakdown	45					
		Treating	35	X	"	2700						
		Flushing	X	3500	Sand	2700						
		Breakdown	28	X	Kero.	2700						
		Treating		X								
		Flushing		X								

(Casing collapsed - See other side)

RECORD OF ANY DEEPER DRILLING

Formation	Top	Bottom	Oil at	Gas at
Commenced drilling at depth of				
Hydrafrac only				
Geol. Dept. does not want to make any changes in formations, since Gamma Ray was taken only of Injun Sand - nothing above.				
Total Depth		1890		

PACKER RECORD

Size	Kind	Set At (Steel Line)
5-1/2	Hookwall Anchor	1751
PACKER PULLED		
Size 5-1/2	Kind Casing Shoe	
OIL PRODUCTION		
Estimated	bbl. per day	Sand
CLARKSBURG OFFICE ENTRIES		
Repair Card	W. B. J. 5/3/56	
Well Card	" "	
Memo Book		
Wall Map		
Map Sheets		

VOLUME AND PRESSURE REPORT

BEFORE CLEANING OUT (Take Test When Ready to Clean Out)

Date of Test	Flow Meter or Open Flow	CUBIC FEET			Sands Gas From	Time Blown
		Reading	Liquid Used	Opening		
2-23-56	FM	14/10	water	1"	Injun	2 hrs.

AFTER CLEANING OUT & hydrafrac

Date of Test	Flow Meter or Open Flow	CUBIC FEET			Sands Gas From	Time Blown
		Reading	Liquid Used	Opening		
4-23-56	FM	66/10	water	1/2	Injun	2 hrs.
(still returning oil from Fracture - Feeding Line - think production will continue to increase.) FGF.						

AFTER DRILLING DEEPER

Date of Test	Flow Meter or Open Flow	CUBIC FEET			Sands Gas From	Time Blown
		Reading	Liquid Used	Opening		