

LATITUDE 39° 25' 00"

80° 35' 00"

LONGITUDE



7'5 OGIS topo location

7.5' loc 1.27 S  
0.77 W

15' loc 1.27 S  
(calc.) 0.77 W

Company \_\_\_\_\_

Farm \_\_\_\_\_

Elev. 1110' - 715' topo. k/a 3/5/93  
Centerpoint C

Quad FOLSOM 7 1/2'

County DODDRIDGE

District MCCLELLAN

WELL LOCATION MAP

File No. 017-1970

# HOPE NATURAL GAS COMPANY

LOCATION FOR WELL No. *5916*

Instructions *N*

*Wetzel* DISTRICT

Farm, on waters of *Salmon Fork*

County, West Virginia

District, *Salmon Fork*

S. *4* E. *2* W.

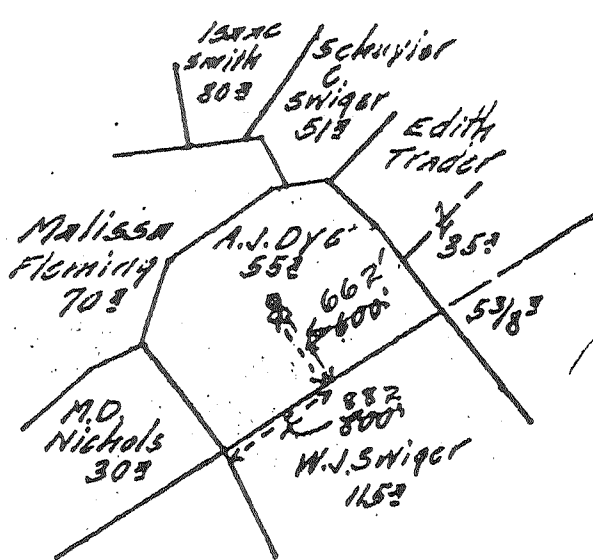
Lease No. *1033* Acres *5.5*

Scale one inch equals *80 feet* Location made in *Pittsburgh* *Dec 13, 1920* Sent to *Clarksburg* *Dec 14, 1920*

Location to be *600 feet from N. corner of section at a point 800 feet from center line of section as per plat.*

45

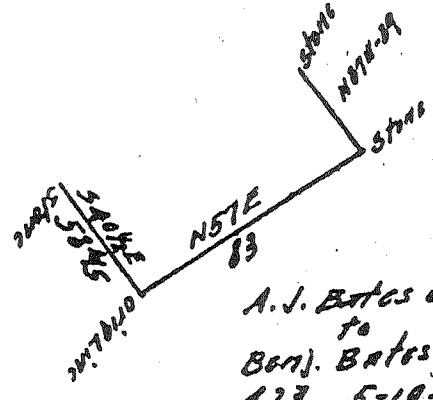
COPY SENT TO FIELD ENGINEER COMPANY



*API-017-1970*

Field Book 297 - 1 Elevation 11108

Note:-- USE NO. 2 Stake



*A.J. Bates et al to Benj. Bates 423 5-19-22*

45

DEC 24 1920  
 JAN 24 1921 A.J.G.D.  
 DEC 29 1920 U.S.S.

TITLE RESERVE

SPECIAL INSTRUCTIONS: COMPLETE WELL ON OR BEFORE *March 23, 1921*

Same Lease on which Located Well No.

Location Made *Dec. 16, 1920* by *H. D. Graham,* As per plat, except as noted. On field map

*Dec. 17, 1920.* Returned to Pittsburgh. *Dec. 17, 1920.*

Location changed on account of *Original location came in deep ravine*

Authorized by *J. B. Corrin,* Date *Dec. 17, 1920* Signed *S. H. Bradley,*  
 By - *Talley -*

Well No. 5916

Wetzel District

Located on A. J. Dye Farm
District McClellan County Doddridge State W. Va.

Location Made 12-16-20 First Work Done 12-20-20
Rig Commenced 12-28-20 Rig Completed 1-6-21
Drilling Commenced 1-14-21 Drilling Completed 3-16-21
Rig Contractor H.N.G.Co. Drilling Contractor H.N.G.Col.Stg.#215
Drillers J.W.Trough and Carl T. Bailley
Tool Dressers J.L.Horner and Wm.S.Wells

Table with 9 columns: FORMATION, Open or Close Hard or Soft, TOP, BOTTOM, Steel Line Measurements, Water Found Depth, Oil Found Depth, Gas Found Depth, REMARKS. Rows include Native Coal, Pittsburgh Coal, Sand, Little Dunkard, Big Dunkard, Gas Sand, First Salt, Second Salt, 3rd Salt, Nixon, Little Lime, Pencil Cave, Big Lime, Big Injun, Squaw, Berea, Gantz, Fifty Feet, Thirty Feet, Gordon Stray, Gordon, Fourth, Fifth Lime shell, Hayard, Total Depth 2931.

Table with 13 columns: SIZE, Charged to Well (Foot, in.), Put to Well (Foot, in.), Pulled Out (Foot, in.), Left in Well (Foot, in.), Transferred Before Completing (Foot, in.), Left at Well Not in Use (Foot, in.), and a note: If more than two strings of casing are left in hole, give reasons for leaving additional strings.

PACKER RECORD

Table with 5 columns: SIZE, KIND, Amount Anchor, Amount Above Anchor, REMARKS.

SHOOTING RECORD (If shot before or upon completion of well)

Table with 13 columns: DATE, Gauge, Top of Shot, Bottom of Shot, Diameter, Good, TEST BEFORE SHOT (Reading, Liquid, Opening), TEST AFTER SHOT (Reading, Liquid, Opening), Test Taken After Shot No. Hours, By Whom Shot.

CEMENTING RECORD

Date Cemented... Size Hole Cemented... Size Casing Cemented...
Top Pittsburgh Coal... Top Cementing... Amount Cement Used...
Bottom Pittsburgh Coal... Bottom Cementing... Amount Sand Used...
Mr. ... of ... Coal Company on ground when coal was cemented
Remarks: ... Signature of persons who cemented well

Approved by G. B. MEHEDITH Foreman

APR - 012 - 1970