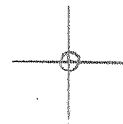


LATITUDE 39° 12' 30"



00' 45" 00"

LONGITUDE

7'5 OGIS topo location

7.5' loc	<u>0.615</u>	15' loc	<u>3.495</u>
	<u>0.68W</u>	(calc.)	<u>0.68W</u>

Company \_\_\_\_\_

Farm \_\_\_\_\_

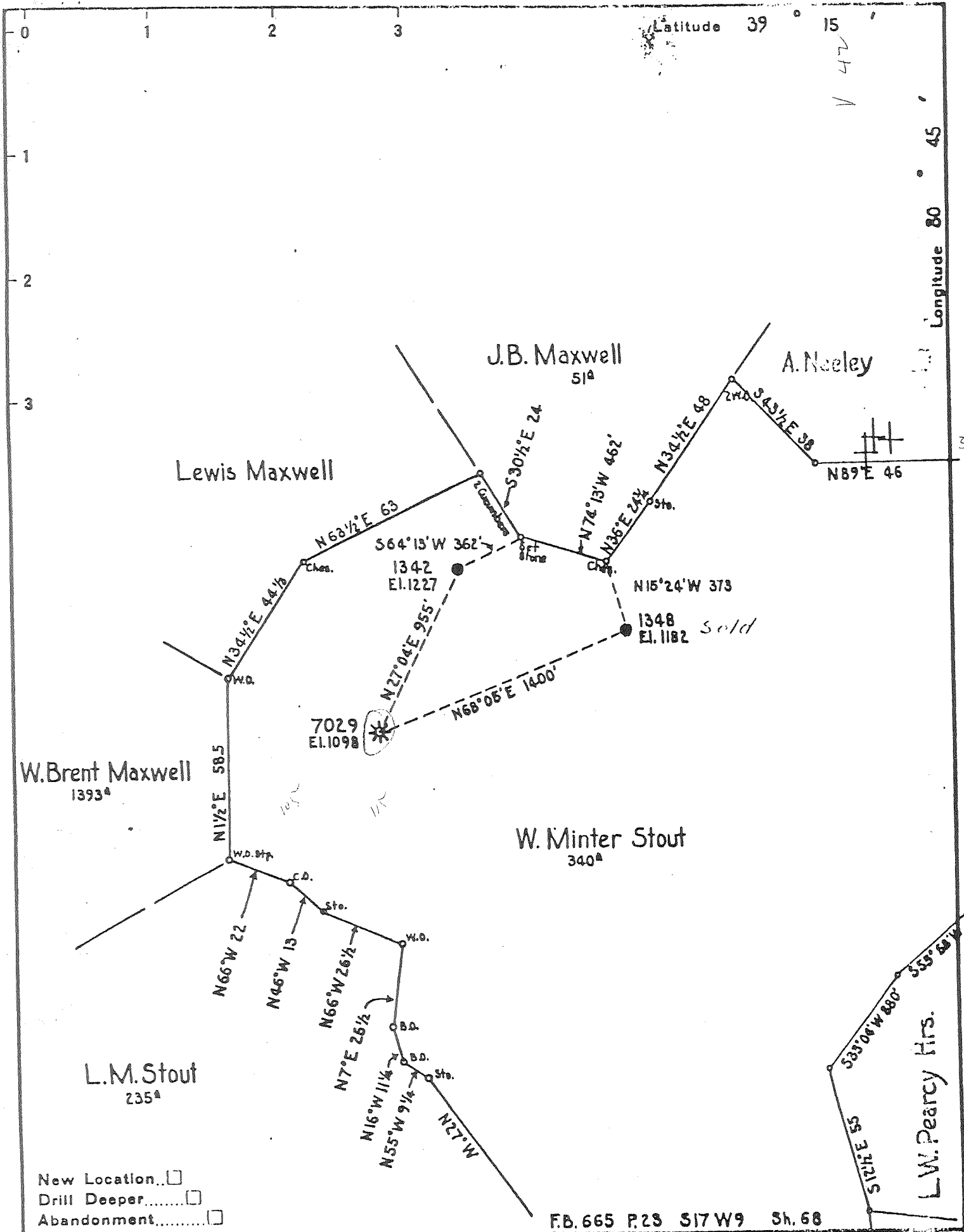
Quad Holbrook NE  
OXFORD 7 1/2'

County DODDRIIDGE

District SOUTHWEST

### WELL LOCATION MAP

File No. 017-1979



Company HOPE CONST. & REE. CO. & HOPE NAT. GAS CO.  
 Address CLARKSBURG, W. VA.  
 Farm W. Minter Stout  
 Tract \_\_\_\_\_ Acres 340 Lease No. 5193  
 Well (Farm) No. \_\_\_\_\_ Serial No. Hope 7029  
H.C.A.R. 1342  
1348  
 Elevation (Spirit Level) Shown Above  
 Quadrangle HOLBROOK  
 County DODDRIDGE District SOUTH WEST  
 Engineer Wm Bowers  
 Engineer's Registration No. 900  
 File No. \_\_\_\_\_ Drawing No. \_\_\_\_\_  
 Date Sept. 16, 1938 Scale 1" = 40 Ft.

STATE OF WEST VIRGINIA  
 DEPARTMENT OF MINES  
 OIL AND GAS DIVISION  
 CHARLESTON

**WELL LOCATION MAP**  
 FILE NO. 017-1979

+ Denotes location of well on United States Topographic Maps, scale 1 to 62,500, latitude and longitude lines being represented by border lines as shown.

- Denotes one inch spaces on border line of original tracing.

CASING AND TUBING RECORD

Size	Before Repairs	Pulled	Put in Well	After Repairs	Disposition of Amount Pulled
10	439			439	
8 1/2	1056			1056	
6 5/8	1778			1778	
5 3/16	---	---	1842-7	1842-7	Tally meas. 1825 Steel Line
2	1912	1912	None	None	

SHOOTING RECORD

Date	Quarts	Top of Shell	Bottom of Shell	Diameter	Sand	TEST BEFORE SHOT			TEST AFTER SHOT			Test Taken After Shot No. Hours	By Whom Shot
						Reading	Liquid	Opening	Reading	Liquid	Opening		
-15-45	40	1870	1885		Injun	24/10 M	1/2"	80/10 W	1"	20 days			
						34,000		67,357		50. ft.			

RECORD OF ANY DEEPER DRILLING

Formation	Top	Bottom	Names of Drillers	Time (Days)
			Ernest F. Casey	35
Not drilled deeper			Names of Tool Dressers	Time (Days)
			Clavious Marks	29
			Wm. Hurst	6

PACKER RECORD

(ALSO NOTE BELOW IF ANY PACKERS ARE PULLED)

Size	Kind	Anchor	Amount Above Anchor
5 3/16	Steel shoe	0	182 5

OIL AND GAS DISCOVERIES IN DEEPER DRILLING

Total Depth	Oil at	Ft. in	Sands
1922			
	Gas at	Ft. in	Sands

VOLUME AND PRESSURE REPORT

BEFORE REPAIRS

Reading	Liquid	Opening	Rock or Minute Pressure	Sands Gas From
30/10	water	1"		Injun

AFTER REPAIRS

VOLUME TEST

Date of Test	Flow Meter or Open Flow	Size of Opening	PITOT TUBE		OPEN FLOW	Sands Gas From
			Reading	Liquid Used		
10-12-45	FM	3/4	24/10	Mercury	76.500	Injun

PRESSURE TEST

Date of Test	Opening	1 Min.	2 Min.	3 Min.	4 Min.	5 Min.	6 Min.	7 Min.	8 Min.	9 Min.	10 Min.	30 Min.	60 Min.	Hrs. R.
10-12-45	5 3/16 Tubing	1	4	7	9	10	11	12	14	15	16	32	42	24

OIL: From None Sand

Estimated Production Bbl. per Day

Remarks: Shot and cleaned out. 5 3/16" casing set in 6 bags cement.

*A. R. Imbary*  
District Superintendent