

1702065A

WW-7
8-30-06



West Virginia Department of Environmental Protection
Office of Oil and Gas
WELL LOCATION FORM: GPS

API: 47-017-02065 WELL NO.: WV 604715 (Snider #4715)

FARM NAME: Snider

RESPONSIBLE PARTY NAME: EQT Production Company

COUNTY: Doddridge DISTRICT: South West ↗

QUADRANGLE: Oxford 7.5' ↙ ↘

SURFACE OWNER: Delbert and Barbara Osborne

ROYALTY OWNER: EQT Production Company, et al

UTM GPS NORTHING: 4333323

UTM GPS EASTING: 515444 GPS ELEVATION: 318 m (1042 ft)

The Responsible Party named above has chosen to submit GPS coordinates in lieu of preparing a new well location plat for a plugging permit or assigned API number on the above well. The Office of Oil and Gas will not accept GPS coordinates that do not meet the following requirements:

1. Datum: NAD 1983, Zone: 17 North, Coordinate Units: meters, Altitude: height above mean sea level (MSL) – meters.
2. Accuracy to Datum – 3.05 meters
3. Data Collection Method:

Survey grade GPS : Post Processed Differential
Real-Time Differential

Mapping Grade GPS X: Post Processed Differential X
Real-Time Differential

4. Letter size copy of the topography map showing the well location.

I the undersigned, hereby certify this data is correct to the best of my knowledge and belief and shows all the information required by law and the regulations issued and prescribed by the Office of Oil and Gas.

Stacy Osborn
Signature

PS # 2180
Title

9/30/14
Date

Received
Office of Oil & Gas
OCT 09 2014

1702065F

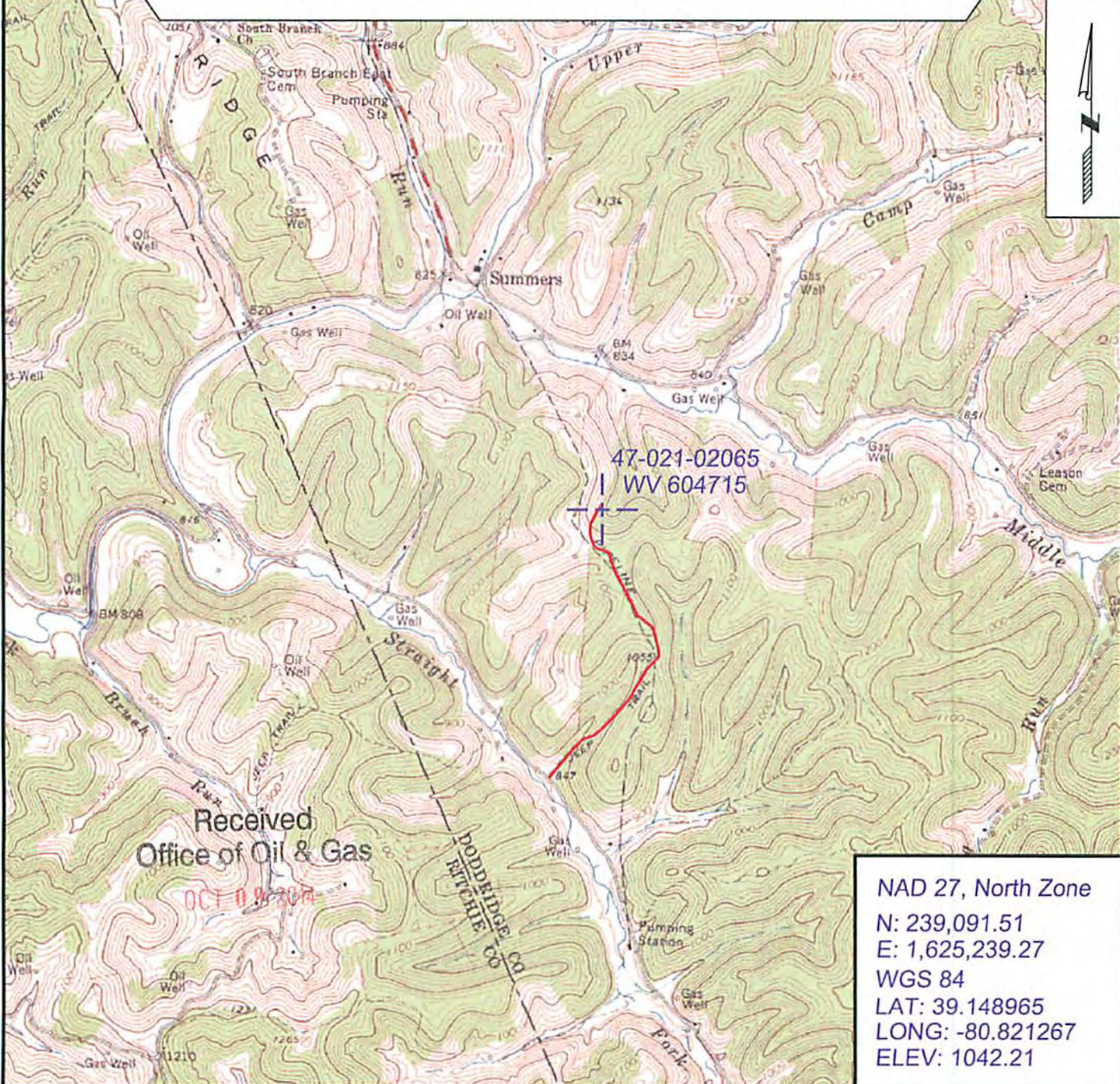
Topo Quad: Oxford 7.5' Scale: 1" = 2000'

County: Doddridge Date: September 29, 2014

District: South West Project No: 67-30-00-08

47-017-02065 WV 604715 (Snider #4715)

Topo



47-021-02065
WV 604715

Received
Office of Oil & Gas
OCT 09 2014

NAD 27, North Zone
 N: 239,091.51
 E: 1,625,239.27
 WGS 84
 LAT: 39.148965
 LONG: -80.821267
 ELEV: 1042.21



SURVEYING AND MAPPING SERVICES PERFORMED BY:
ALLEGHENY SURVEYS, INC.
 1-800-482-8606
 237 Birch River Road
 Birch River, WV 26610
 PH: (304) 649-8606
 FAX: (304) 649-8608

PREPARED FOR:
EQT Production Company
 P.O. Box 280
 Bridgeport, WV 26330

08/21/2015