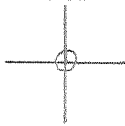


LATITUDE 39° 20' 00"



LONGITUDE 80° 35' 00"

7.5 OGIS topo location

7.5' loc, 0.13 S
1.39 W

15' loc 0.13 S
(calc.) 1.39 W

Company _____

Farm _____

Elevation topog. est. 1005'
Centerpoint SC

Quad SALEM 7 1/2'

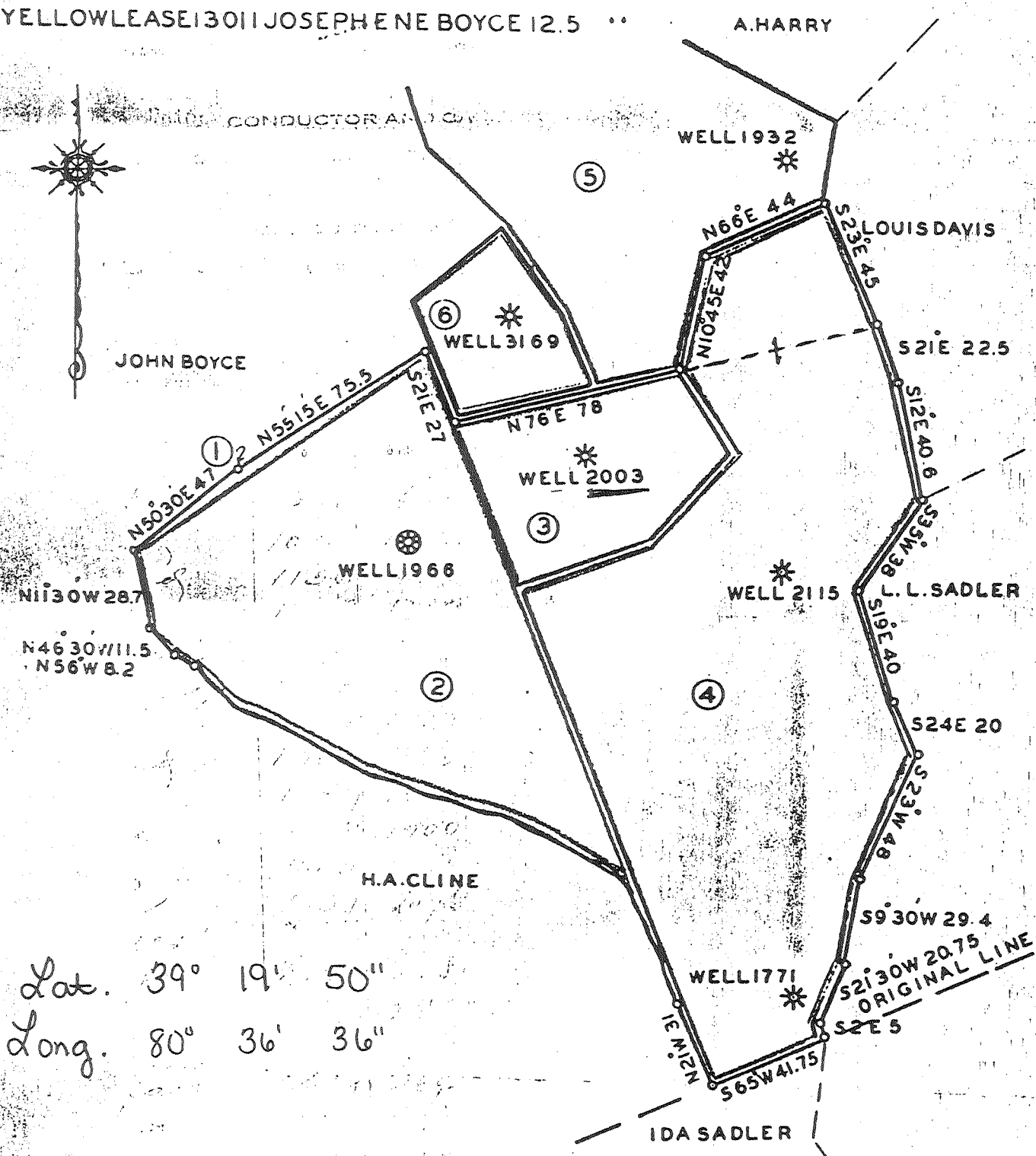
County DODDRIDGE

District MCCLELLAN

WELL LOCATION MAP

File No. 017-2165

- ① BLACK ORIGINAL MORTGAGE 256.5 ACRES
- ② BLUE LEASE 4626 J.R. BOYCE 46 "
- ③ BROWN LEASE 4627 " " 40 " SAME DESCRIPTION AS ②
- ④ RED LEASE 4642 " " 140 "
- ⑤ GREEN LEASE 4641 " " 76 "
- ⑥ YELLOW LEASE 13011 JOSEPH ENE BOYCE 12.5 "



Lat. 39° 19' 50"
 Long. 80° 36' 36"

017-2165

THE MANUFACTURERS LIGHT & HEAT CO.
 LEASES SITUATED IN
 M^cCLELLAN DISTRICT DODDRIDGE CO. W.VA.
 SCALE 1" = 50 RODS

3-11-33

Y-6
 631

Division **1163**
 248 Fourth Ave., Pittsburgh, Penna.
 Record of Well No. **15-20003** on **Gas R^{es} Eliz Boyce** Farm **40** Acres
 Field **McBlellan** District **Doddridge** County **WVa** State
 Rig Commenced **191** Completed **191**
 Drilling Commenced **Oct 23 1916** Completed **Dec 23 1916**
 Cost per foot _____ Contractor **Flint & Strother, Co** Address **Clarksburg, W. Va.**
 Drillers' Names **C. A. Snider, C. E. Flint & Friend Smith & H. Moore**

BOILER			ENGINE			RIG			
H. P.	No.	Name of Maker	H. P.	No.	Name of Maker	New	Old	Height	Name of Builder
-	-	-	-	-	-	-	Old	82	Oliver & Bros

CONDUCTOR AND CASING USED IN DRILLING									
Conductor	13 inch	10 inch	8 1/2 inch	6 3/4 inch	6 1/2 inch	5 3/4 inch	5 8-16 inch	6 inch	4 inch
16	-	325	125	1341			2714		

CONDUCTOR AND CASING LEFT IN WELL									
Conductor	13 inch	10 inch	8 1/2 inch	6 3/4 inch	6 1/2 inch	5 3/4 inch	5 8-16 inch	6 inch	4 inch
16	-			1941			2714		

OIL WELL										GAS WELL	
When Shot	Size of Torpedo	1st Day's Production	Tubing	Rods	Tanks	Size of Packer	Depth Set	Packed with	1st Minute's Pressure	Rock P	
								5 3/10	12 ft	95	

FORMATION	Top		Bottom		Thickness	REMARKS	
	Top	Bottom	Top	Bottom			
Pittsburgh Coal	620	628			8	Water at 225	
Little Dunkard	1083	1106			23		
Big Dunkard	1156	1163			7		
Gas Sand	1248	1359			111		
First Salt Sand	1346	1418			72		
Second Salt Sand	1480	1540			70		
Sand	1600	1627			27		
Maxon Sand	1700	1835			135		
Little Lime	1857	1879			22		
Pencil Cove	1879	1900			21		
Big Lime	1900	1957			57		
Big Injun	1957	2076			119		Gas 2005'-2010' - Gas 2068'-207
Squaw Shelled							
Werra Grit	2200	2281			81		
Fifty Foot	2433	2454			21		
Thirty Foot	2640	2664			24		
Gordon Stray	2689	2694			5		
Gordon Sand	2713	2732			19	Gas at 2718'-2724	
Fourth Sand	2753	2765			12		
Total Depth		2797				Well shot in 5" casing	

017-2165

Examined above information and measurements and found to be correct by **Flint & Strother** Contractor
 Examined and approved by _____
 NOTE-The above blank must be filled out carefully by the Contractor, with complete and accurate record of the Well, and accompany when the bill for drilling.
 All formations and known sands must be given by their proper name, with actual line measurements, and under the head of "Remarks" must be recorded at what depth Oil, Gas or Water was found, the quantity of same, the quality of the sand, and thickness of pay.
 Make no memoranda of boiler and engine if owned by contractor.