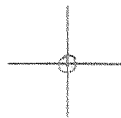


LATITUDE 39° 20' 00"



LONGITUDE 90° 55' 00"

7'5 OGIS topo location

7.5' loc	<u>0.275</u>	15' loc	<u>0.375</u>
	<u>1.17W</u>	(calc.)	<u>1.17W</u>

Company _____

Farm _____

Elevation top est. 1305'

Centerpoint

Quad SALEM 7 1/2' 50

County DODDRIDGE

District MCCLELLAN

WELL LOCATION MAP

File No. 017-2176

The New Britain Light & Heat Co

LOCATION FOR WELL No. 2115

Lease No. 70412 for 150 Acres, Madalia District.

DESCRIPTION

Well No. E on farm of Chas R Boyce
McNeill Dis't. Twp. Joddridge County W Va
350 feet from West line of Eddie Keys Farm
feet from _____ line of _____ Farm
feet from _____ line of _____ Farm
feet from _____ line of _____ Farm

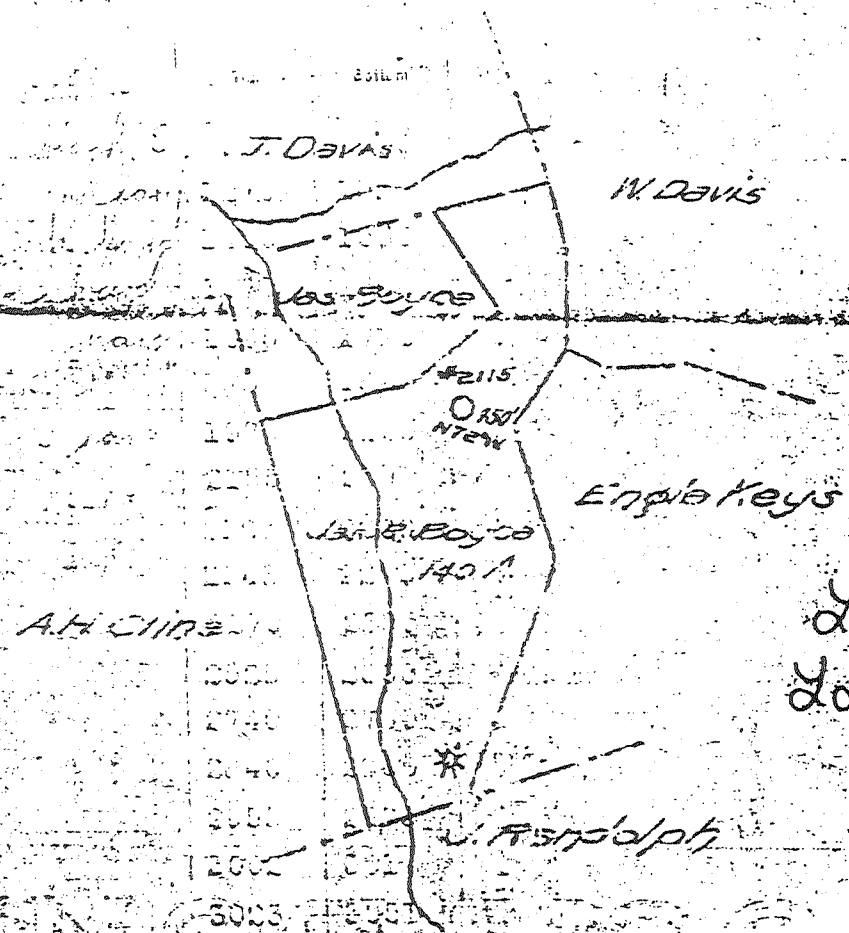
As shown on Sketch below. Scale of sketch: 1" equals 1320 feet

Location made March 21, 1917 Signed A Appel

Reservation around Buildings, none Feet. Chas E Baker, Foreman

SPECIAL CONDITIONS:—

WELL
1st Day Production
 tubing



Lat. 39° 19' 41"
Long. 80° 36' 31"

017-2176

Chas E Baker Dist. Supt. Pittsburgh, Pa. March 21, 1917

You are hereby authorized to commence work on above well at once, as well must be commenced by at once 1917, and must be completed by as soon as possible 1917

All charges for labor and material incident to above well must be charged to this Well No. 2115, and when work is completed report must be filled out on reverse side of this sheet and forwarded to Pittsburgh Office. Retain one copy of this order for your files.

APPROVED
[Signature]
APPROVED BY
[Signature]

Company

248 Fourth Ave., Pittsburgh, Penna.

Division

Record of Well No. 2115 on James R. Boyce Farm Acres
 Field McLellan District Township Donbridge County W. Va. State
 Rig Commenced 7/1/10 1917, Completed 7/1/13 1917
 Drilling Commenced 7/1/10 1917, Completed 7/1/13 1918
 Cost per foot Contractor Flint & Strother Co. Address Clarksburg, W. Va
 Drillers' Names S.L. Chatham, C.A. Dawson, J.D. Cottrill, Herman Morrison.

BOILER			ENGINE			RIG			
H. P.	No.	Name of Maker	H. P.	No.	Name of Maker	New	Old	Height	Name of Builder
								82'	H.H. Hazelwood

CONDUCTOR AND CASING USED IN DRILLING

Conductor	13 inch	10 inch	8 1/2 inch	6 3/4 inch	6 1/2 inch	5 1/2 inch	5 8-16 inch	5 inch	4 inch
16'		306	1424	2265			255'-2"		

CONDUCTOR AND CASING LEFT IN WELL

Conductor	13 inch	10 inch	8 1/2 inch	6 3/4 inch	6 1/2 inch	5 1/2 inch	5 8-16 inch	5 inch	4 inch	3 inch
16'				2262			255'-2"			

OIL WELL

GAS WELL

When Shot	Size of Torpedo	1st Day's Production	Tubing	Rods	Tanks	Size of Packer	Depth Set	Packed with	1st Minute's Pressure	Rock Press
FORMATION			Top	Bottom	Thickness					
Pittsburgh Coal black S			923	930	7				8	76
Little Dunkard dark hard			1270	1310	40					
Big Dunkard dark hard			1450	1500	110					
Gas Sand white hard			1575	1644	69					
First Salt Sand white hard			1690	1770	80					
Second Salt Sand dark			1785	1845	60					
Maxon Sand dark hard			1970	2105	135					
Little Lime			2155	2195	30					
Pencil Cave			2185	2200	15					
Big Lime			2243	2270	27					
Big Injun			2270	2385	115					
Berea Grit			2525	2600	75					
Fifty Foot			2740	2780	40					
Thirty Foot			2840	2865	25					
Gordon Stray			2955	2973	18					
Gordon Sand			3002	3012	10					
Fourth Sand			3023	3051	28					
Total Depth			3073							

12 ft water thru 2" opening
 12 ft 255'-2" of 5 1/2" casing
 section should be stay and
 to shut off cover steel shown
 on bottom R. & P. steel collar
 on top.
 Gas 2325 - 2333.
 Gas 3038.

OH
 O. H. Baker
 017-2176

Examined above information and measurements and found to be correct by

Examined and approved by

NOTE-The above blank must be filled out carefully by the Contractor, with a complete and accurate record of the Well, and accompany when presenting the bill for drilling.

All formations and known sands must be given by their proper name, with correct measurements, and under the head of "Remarks" that be recorded at what depth Oil, Gas or Water was found, the quantity of same, the quality of the sand, and thickness of pay.

Make no memoranda of boiler and engine if owned by contractor.