



1702198P

WW-7
5-02

West Virginia Department of Environmental Protection
Office of Oil & Gas

WELL LOCATION FORM: GPS

API: 47- 017 - 2198 WELL NO: No.8

FARM NAME: J.H. Bode

RESPONSIBLE PARTY NAME: S.L.Meadows Jr. Production Co.

COUNTY: Doddridge DISTRICT: Cove

QUADRANGLE: Oxford 7.5'

SURFACE OWNER: Timothy Defazio

ROYALTY OWNER: S.L. Meadows Production Co. et al.

UTM GPS NORTHING: 4,334,649 (NAD 83)

UTM GPS EASTING: 521,316 (NAD 83) GPS ELEVATION: 328 m. 1076 FT.

The Responsible Party named above has chosen to submit GPS coordinates in lieu of preparing a new well location plat for a plugging permit on the above well. The Office of Oil & Gas will not accept GPS coordinates that do not meet the following requirements:

1. Datum: NAD 1983, Zone:17 North, Coordinate Units: meters, Altitude: height above mean sea level (MSL) - meters.
2. Accuracy to Datum - 3.05 meters
3. Data Collection Method:

Survey Grade GPS Post Processed Differential
 Real-Time Differential
 Mapping Grade GPS Post Processed Differential
 Real-Time Differential

RECEIVED
Office of Oil and Gas
MAR 26 2013
Department of Environmental Protection

I the undersigned, hereby certify this data is correct to the best of my knowledge and belief and shows all the information required by law and the regulations issued and prescribed by the Office of Oil and Gas.

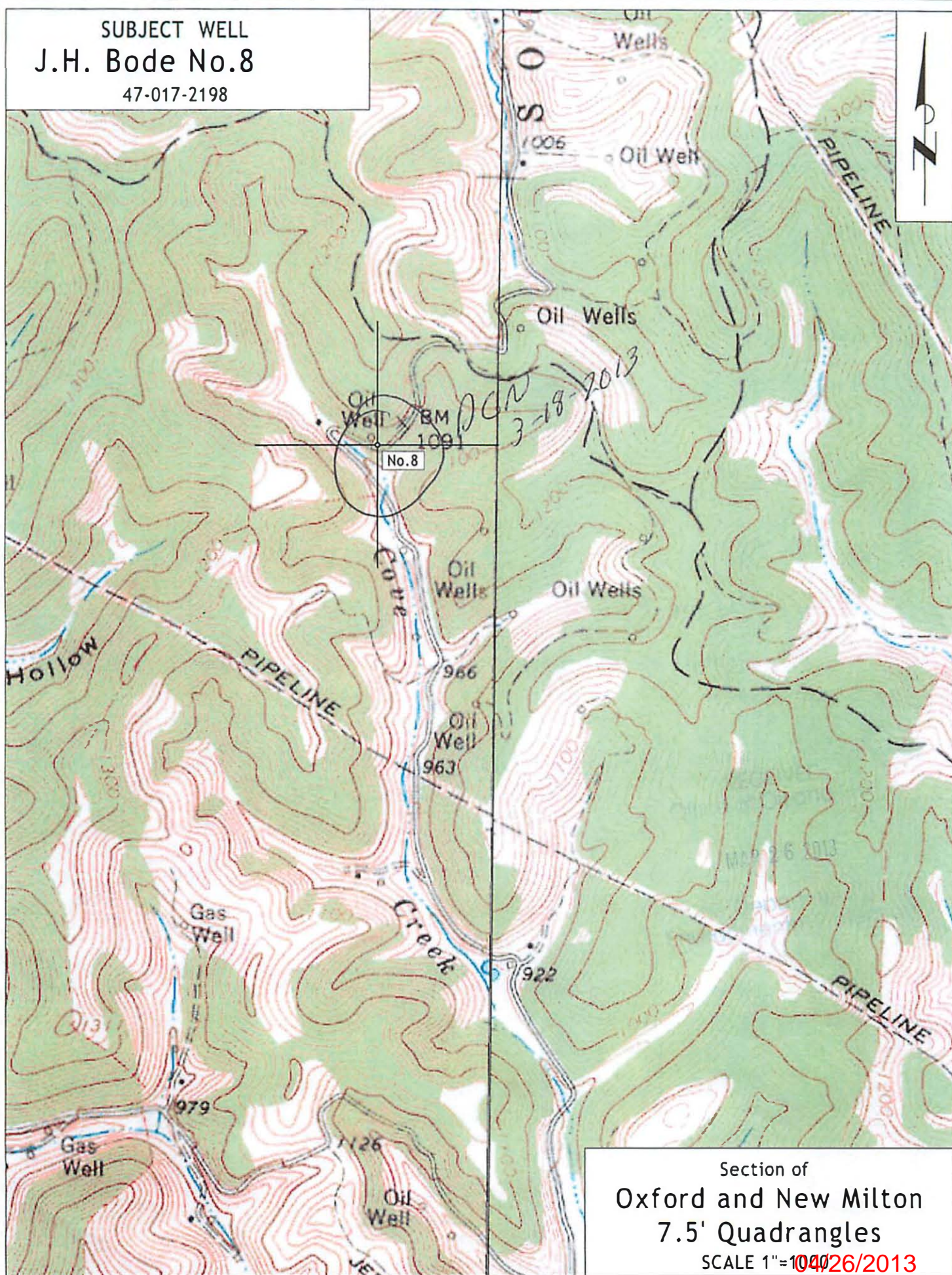
Timothy P. Roush
Signature

Professional Surveyor
Title

February 22, 2013
Date

04/26/2013

SUBJECT WELL
J.H. Bode No.8
47-017-2198



Section of
Oxford and New Milton
7.5' Quadrangles
SCALE 1"=~~100~~26/2013