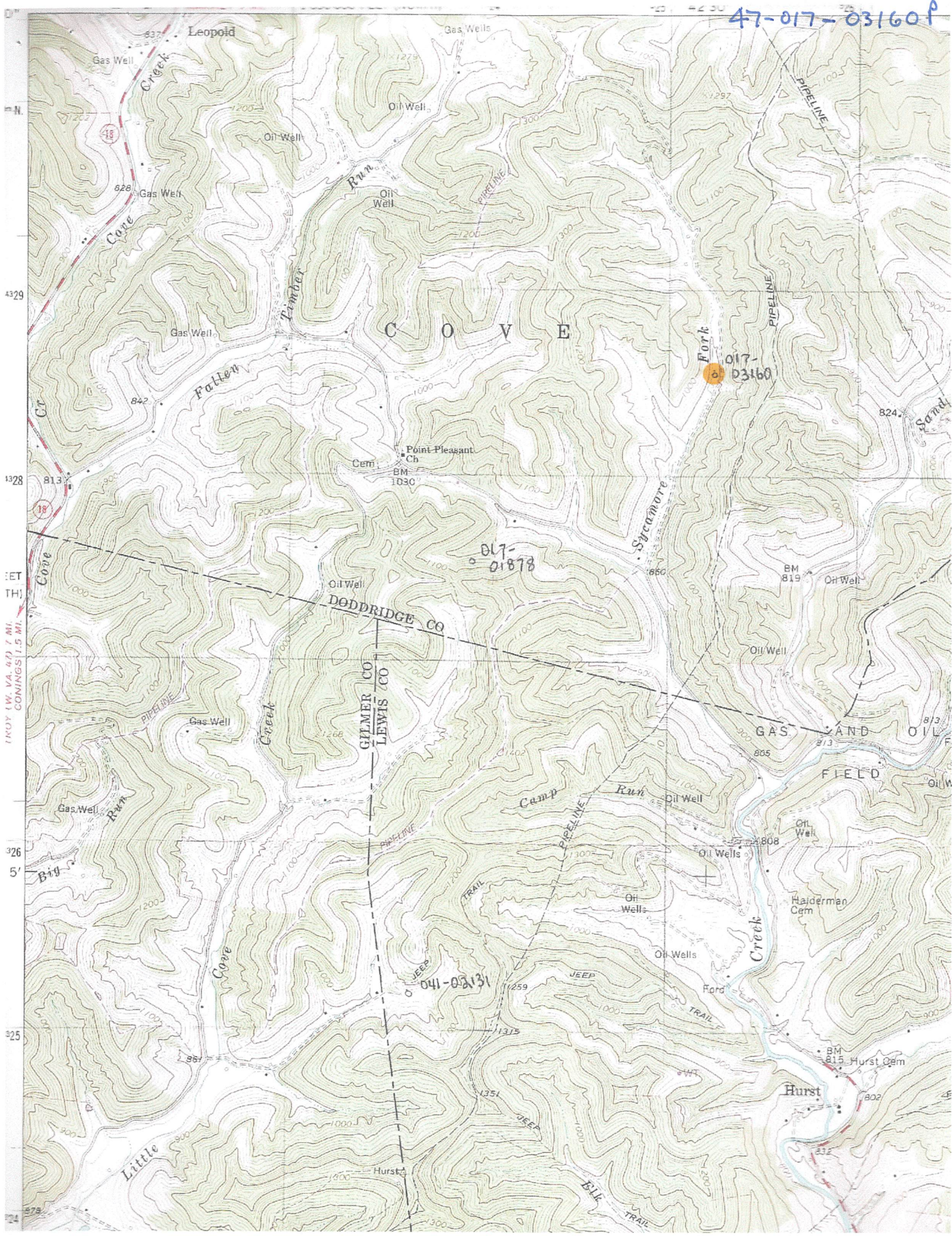


47-017-03160 F



1 INCH = 1.5 MILES

4329  
4328  
326  
5'  
325  
324

DODDRIDGE CO  
GILMER CO  
LEWIS CO

041-02131

017-01878

017-03160

Hurst

GAS SAND OIL FIELD

Leopold

C O V E

Fork

Cone Creek

Timber Run

Sycamore Fork

Camp Run

Little Cove

Hurston

Haiderman Cem

Point Pleasant Ch

Cem

BM 1030

BM 815

Hurst Cem

BM 819

BM 813

BM 805

BM 808

BM 802

BM 815

BM 802

BM 815

BM 802

BM 815

BM 802

BM 815

BM 802

BM 815

BM 802

BM 815

BM 802

BM 815

BM 802

BM 815

BM 802

BM 815

BM 802

BM 815

BM 802

BM 815

BM 802

BM 815

BM 802

BM 815

BM 802

BM 815

BM 802

BM 815

BM 802

BM 815

BM 802

BM 815

BM 802

BM 815

BM 802

BM 815

BM 802

BM 815

BM 802

BM 815

BM 802

BM 815

BM 802

BM 815

BM 802

BM 815

BM 802

BM 815

BM 802

BM 815

BM 802

BM 815

BM 802

BM 815

BM 802

BM 815

BM 802

BM 815

BM 802

BM 815

BM 802

BM 815

BM 802

BM 815

BM 802

BM 815

BM 802

BM 815

BM 802

BM 815

BM 802

BM 815

BM 802

BM 815

BM 802

BM 815

BM 802

BM 815

BM 802

BM 815

BM 802

BM 815

BM 802

BM 815

BM 802

BM 815

BM 802

BM 815

BM 802

BM 815

BM 802

BM 815

BM 802

BM 815

BM 802

BM 815

BM 802

BM 815

BM 802

BM 815

BM 802

BM 815

BM 802

BM 815

BM 802

BM 815

BM 802

BM 815

BM 802

BM 815

BM 802

BM 815

BM 802

BM 815

BM 802

BM 815

BM 802

BM 815

BM 802

BM 815

BM 802

BM 815

BM 802

BM 815

BM 802

BM 815

BM 802

BM 815

BM 802

BM 815

BM 802

BM 815

BM 802

BM 815

BM 802

BM 815

BM 802

BM 815

BM 802

BM 815

BM 802

BM 815

BM 802

BM 815

BM 802

BM 815

BM 802

BM 815

BM 802

BM 815

BM 802

BM 815

BM 802

BM 815

BM 802

BM 815

BM 802

BM 815

BM 802

BM 815

BM 802

BM 815

BM 802

BM 815

BM 802

BM 815

BM 802

BM 815

BM 802

BM 815

BM 802

BM 815

BM 802

BM 815

BM 802

BM 815

BM 802

BM 815

BM 802

BM 815

BM 802

BM 815

BM 802

BM 815

BM 802

BM 815

BM 802

BM 815

BM 802

BM 815

BM 802

BM 815

BM 802

BM 815

BM 802

BM 815

BM 802

BM 815

BM 802

BM 815

BM 802

BM 815

BM 802

BM 815

BM 802

BM 815

BM 802

BM 815

BM 802

BM 815

BM 802

BM 815

BM 802

BM 815

BM 802

BM 815

BM 802

BM 815

BM 802

BM 815

BM 802

BM 815

BM 802

BM 815

BM 802

BM 815

BM 802

BM 815

BM 802

BM 815

BM 802

BM 815

BM 802

BM 815

BM 802

BM 815

BM 802

BM 815

BM 802

BM 815

BM 802

BM 815

BM 802

BM 815

BM 802

BM 815

BM 802

BM 815

BM 802

BM 815

BM 802

BM 815

BM 802

BM 815

BM 802

BM 815

BM 802

BM 815

BM 802

BM 815

BM 802

BM 815

BM 802

BM 815

BM 802

BM 815



WW-7  
8-30-06



West Virginia Department of Environmental Protection  
Office of Oil and Gas

**WELL LOCATION FORM: GPS**

API: 47-017-03160 WELL NO.: 1

FARM NAME: I.R. Schmidt

RESPONSIBLE PARTY NAME: Mike Ross

COUNTY: Doddridge DISTRICT: Cove

QUADRANGLE: Vadis

SURFACE OWNER: Franklin Rastle

ROYALTY OWNER: I.R. Schmidt Heirs

UTM GPS NORTHING: 4328755.9

UTM GPS EASTING: 525265.4 GPS ELEVATION: 890'

The Responsible Party named above has chosen to submit GPS coordinates in lieu of preparing a new well location plat for a plugging permit or assigned API number on the above well. The Office of Oil and Gas will not accept GPS coordinates that do not meet the following requirements:

1. Datum: NAD 1983, Zone: 17 North, Coordinate Units: meters, Altitude: height above mean sea level (MSL) – meters.
2. Accuracy to Datum – 3.05 meters
3. Data Collection Method:

Survey grade GPS \_\_\_\_: Post Processed Differential \_\_\_\_

Real-Time Differential \_\_\_\_

Mapping Grade GPS \_\_\_\_: Post Processed Differential \_\_\_\_

Real-Time Differential \_\_\_\_

4. **Letter size copy of the topography map showing the well location.**

I the undersigned, hereby certify this data is correct to the best of my knowledge and belief and shows all the information required by law and the regulations issued and prescribed by the Office of Oil and Gas.

Mike Ross  
Signature

President  
Title

Feb. 20, 2020  
Date

RECEIVED  
Office of Oil and Gas  
MAR 05 2020  
WV Department of  
Environmental Protection