

HILL # 3

9125

LATITUDE 39° 17' 30"

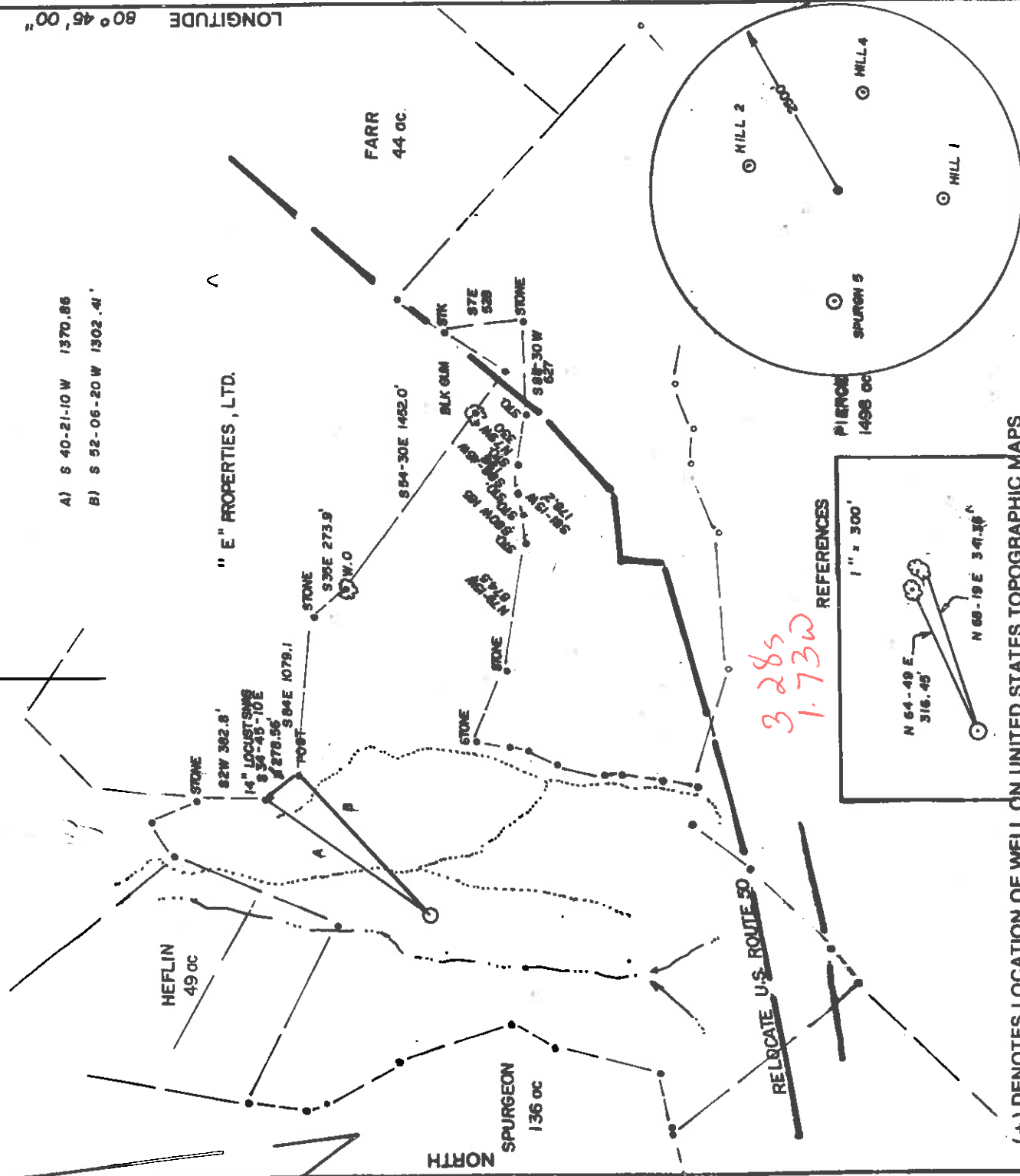
2225'

LONGITUDE 80° 45' 00"

- A) S 40-21-10 W 1370.86
- B) S 52-06-20 W 1302.41'

"E" PROPERTIES, LTD.

TOPO SPOT



3285
1.73W

(+) DENOTES LOCATION OF WELL ON UNITED STATES TOPOGRAPHIC MAPS

FILE NO. _____
 DRAWING NO. _____
 SCALE 1" = 1000'
 MINIMUM DEGREE OF ACCURACY 1 IN 200
 PROVEN SOURCE OF ELEVATION B.M. = 866 AT INTERS. OF ROADS

I THE UNDERSIGNED, HEREBY CERTIFY THAT THIS PLAT IS CORRECT TO THE BEST OF MY KNOWLEDGE AND BELIEF AND SHOWS ALL THE INFORMATION REQUIRED BY LAW AND THE REGULATIONS ISSUED AND PRESCRIBED BY THE DEPARTMENT OF ENERGY. *Robert J. Davis*
 (SIGNED) _____
 R.P.E. _____ I.L.S. _____ 800

PLACE SEAL HERE

STATE OF WEST VIRGINIA
DEPARTMENT OF ENERGY
OIL AND GAS DIVISION



DATE OCTOBER 31, 19 94
 OPERATOR'S WELL NO. _____
 API WELL NO. _____

WELL TYPE: OIL GAS LIQUID INJECTION _____ WASTE DISPOSAL _____
 (IF "GAS,") PRODUCTION STORAGE DEEP SHALLOW
 LOCATION: ELEVATION 1027 WATER SHED BRUSHY FORK
 DISTRICT WEST UNION COUNTY DODDRIDGE
 QUADRANGLE WEST UNION COUNTY DODDRIDGE
 SURFACE OWNER "E" PROPERTIES LTD. ACREAGE 188
 OIL & GAS ROYALTY OWNER CHELYBROOK HEIRS LEASE ACREAGE 194

47-017-04177

PROPOSED WORK: DRILL CONVERT DRILL DEEPER REDRILL FRACTURE OR STIMULATE PLUG OFF OLD FORMATION PERFORATE NEW FORMATION OTHER PHYSICAL CHANGE IN WELL (SPECIFY) _____

PLUG AND ABANDON CLEAN OUT AND REPLUG _____
 TARGET FORMATION ALEXANDER ESTIMATED DEPTH 5500
 WELL OPERATOR RARE EARTH MINERALS, INC DESIGNATED AGENT SAM SPATAFORE
 ADDRESS P.O. BOX 390, CLARKSBURG WV 240 ADDRESS PO. BOX 390 CLARKSBURG WV

Doddridge COUNTY NAME

PERMIT

State of West Virginia
Division of Environmental Protection
Section of Oil and Gas

OCT 17 1996

Permitting
Office of Oil & Gas Well Operator's Report of Well Work

Farm name: "E" PROPERTIES LTD. Operator Well No.: HILL #3

LOCATION: Elevation: 972.00 Quadrangle: WEST UNION

District: WEST UNION County: DODDRIDGE
Latitude: 14750 Feet south of 39 Deg. 20Min. 0 Sec.
Longitude 8500 Feet West of 80 Deg. 45 Min. 0 Sec.

Company: RARE EARTH MINERALS, INC.
507 BALTIMORE AVE., P.O.BX
CLARKSBURG, WV 26302-0390

Agent: SAMUEL S. SPATAFORE, II

Inspector: MIKE UNDERWOOD
Permit Issued: 10/31/94
Well work Commenced: 5/15/96
Well work Completed: 5/19/96
Verbal Plugging
Permission granted on: N/A
Rotary X Cable Rig
Total Depth (feet) 5480
Fresh water depths (ft) 75

Salt water depths (ft) 1180

Is coal being mined in area (Y/N)? N
Coal Depths (ft): 80-86

OPEN FLOW DATA

Producing formation Alexander Pay zone depth (ft) 5192-5202
Gas: Initial open flow 100 MCF/d Oil: Initial open flow N/A Bbl/d
Final open flow MCF/d Final open flow N/A Bbl/d
Time of open flow between initial and final tests 72 Hours
Static rock Pressure 1700 psig (surface pressure) after 4 Hours
Second producing formation Pay zone depth (ft)
Gas: Initial open flow MCF/d Oil: Initial open flow Bbl/d
Final open flow MCF/d Final open flow Bbl/d
Time of open flow between initial and final tests Hours
Static rock pressure psig (surface pressure) after Hours

NOTE: ON BACK OF THIS FORM PUT THE FOLLOWING: 1). DETAILS OF PERFORATED INTERVALS, FRACTURING OR STIMULATING, PHYSICAL CHANGE, ETC. 2). THE WELL LOG WHICH IS A SYSTEMATIC DETAILED GEOLOGICAL RECORD OF ALL FORMATIONS, INCLUDING COAL ENCOUNTERED BY THE WELLBORE.

For: RARE EARTH MINERALS, INC.

BY: 
Date: 10/16/96

| Size | Casing & Tubing | Used in Drilling | Left in Well | Cement Fill Up Cu. Ft. |
|--------|-----------------|------------------|--------------|------------------------|
| 11-3/4 | 30' | | | None |
| 8-5/8 | 977' | 977' | | CTS 374 ft. |
| 4-1/2 | 5401' | 5401' | | 2500' 640 ft. |

Alexander - Perforated from 5192 - 5202 with 30 holes
Water Frac - X-Link with 25,000# 20/40 Sand at 20 BPM
Using 230 BBL of water and 500 Gal. 15% Acid

DRILLING LOG

| | 0 - 700 | 1/2" Stream H ₂ O 75' |
|-----------------|-------------|----------------------------------|
| Sand & Shale RR | 700 - 1915 | |
| Shale | 1915 - 2000 | |
| Big Lime | 2000 - 2210 | Coal 80-86' |
| Shale | 2210 - 2310 | |
| Weir | 2310 - 2780 | |
| Sand Shale | 2780 - 2800 | |
| Gordon | 2800 - 3750 | |
| Shale | 3750 - 3780 | |
| Speechley | 3780 - 4030 | |
| Shale | 4030 - 4230 | |
| Balltown | 4230 - 4910 | |
| Shale | 4910 - 4930 | |
| Benson | 4930 - 5190 | |
| Shale | 5190 - 5210 | |
| Alexander | | |

TD

5480