

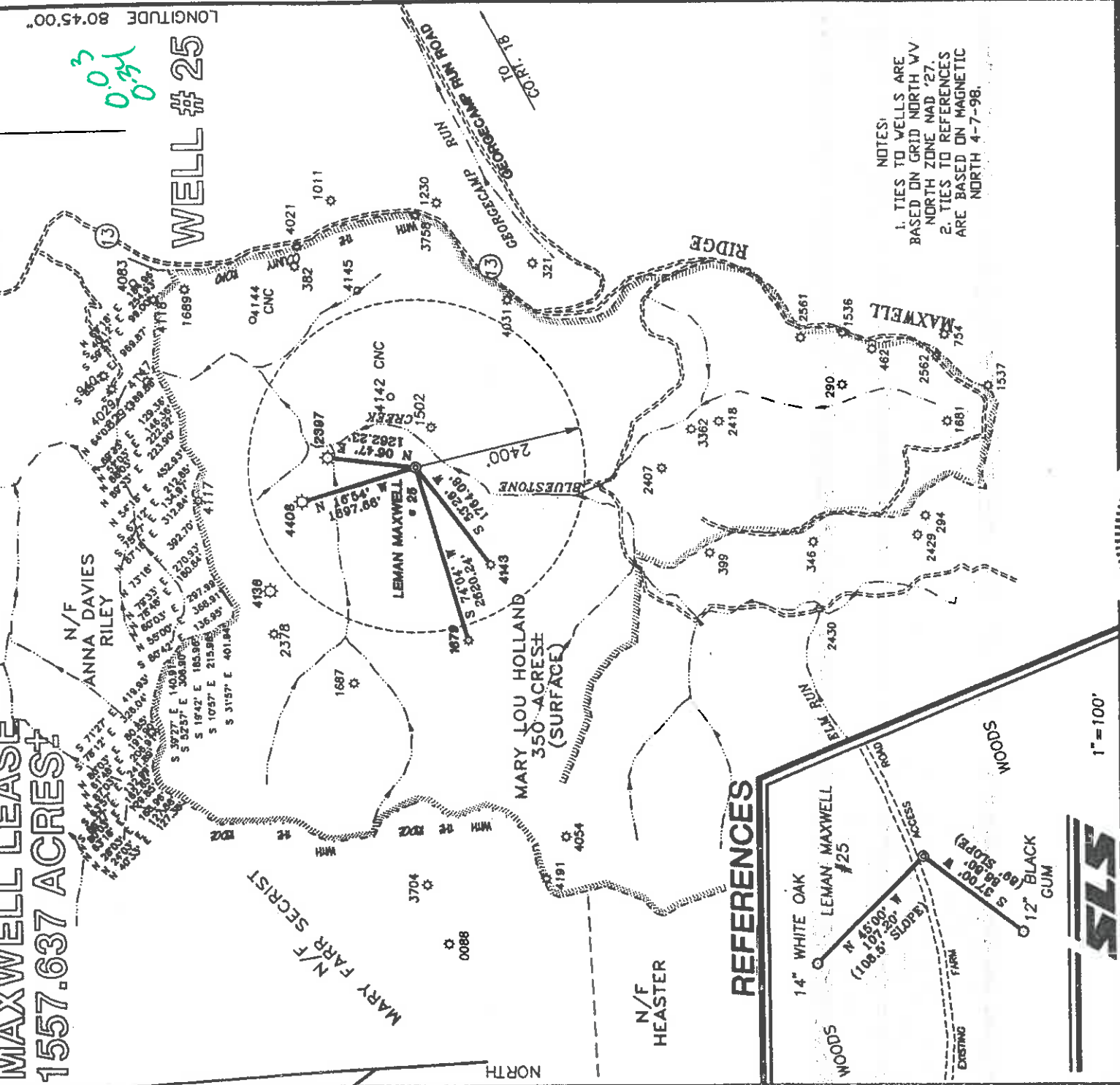
# MAXWELL LEASE 1557.637 ACRES

LATITUDE 39°15'00"

LONGITUDE 80°45'00"

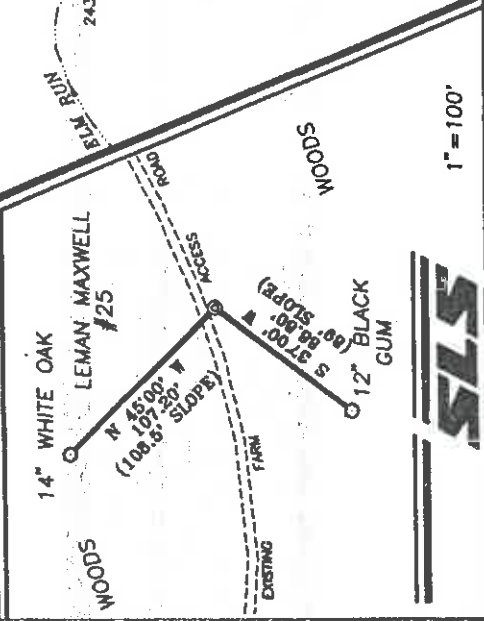
## WELL #25

0.34  
0.34



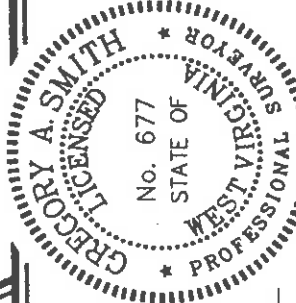
NOTES:  
 1. TIES TO WELLS ARE BASED ON GRID NORTH WV NORTH ZONE NAD '27.  
 2. TIES TO REFERENCES ARE BASED ON MAGNETIC NORTH 4-7-98.

### REFERENCES



I THE UNDERSIGNED, HEREBY CERTIFY THAT THIS PLAN IS CORRECT TO THE BEST OF MY KNOWLEDGE AND BELIEF AND SHOWS ALL THE INFORMATION REQUIRED BY LAW AND THE REGULATIONS ISSUED AND PRESCRIBED BY THE DEPARTMENT OF ENERGY.

P.S. *Gregory A. Smith*  
 677



MINIMUM DEGREE OF ACCURACY 1 / 200 FILE NO. 3149P25 (35-18)  
 PROVEN SOURCE OF ELEVATION TOP OF KNOB ELEVATION 1333' SCALE 1" = 2000'

WELL TYPE : OIL \_\_\_ GAS  INJECTION \_\_\_ WASTE LIQUID \_\_\_ IF "GAS" PRODUCTION \_\_\_ STORAGE \_\_\_ DEEP \_\_\_ SHALLOW \_\_\_ X

LOCATION : ELEVATION 964' WATERSHED BLUESTONE CREEK  
 DISTRICT WEST UNION COUNTY DODDRIDGE QUADRANGLE OXFORD 7.5'  
 SURFACE OWNER MARY LOU HOLLAND ACREAGE 1557.637  
 ROYALTY OWNER MARY LOU HOLLAND ET.AL. LEASE ACREAGE 1557.637  
 PROPOSED WORK : LEASE NO. \_\_\_\_\_  
 DRILL \_\_\_ X \_\_\_ CONVERT \_\_\_ DRILL DEEPER \_\_\_ REDRILL \_\_\_ FRACTURE OR STIMULATE \_\_\_ X \_\_\_ PLUG OFF OLD  
 FORMATION \_\_\_ PERFORATE NEW FORMATION \_\_\_ PLUG AND ABANDON \_\_\_ CLEAN OUT AND REPLUG \_\_\_ OTHER  
 PHYSICAL CHANGE IN WELL (SPECIFY) TARGET FORMATION ALEXANDER  
 ESTIMATED DEPTH 5500'

WELL OPERATOR ANVIL OIL COMPANY DESIGNATED AGENT JUSTIN M. HENDERSON  
 ADDRESS P.O.BOX 1230 FAIRMONT, WV 26554-1230 ADDRESS P.O.BOX 427 WEST UNION, WV 26456

(+) DENOTES LOCATION OF WELL ON UNITED STATES TOPOGRAPHIC MAPS.  
 DATE APRIL 15, 19 98  
 OPERATORS WELL NO. LEMAN MAXWELL #25  
 API WELL NO. 47-017-04439  
 STATE COUNTY PERMIT

STATE OF WEST VIRGINIA  
 DIVISION OF ENVIRONMENTAL PROTECTION  
 OFFICE OF OIL AND GAS

0000 4439

6-6-133

NR-3 RECEIVED  
Office of Oil & Gas  
Permitting  
JUN 06 2000  
WV Division of  
Environmental Protection

State of West Virginia  
Division of Environmental Protection  
Section of Oil and Gas

API # 47-17-04439  
28-May-98 ✓

Well Operator's Report of Well Work

Farm name: HOLLAND, MARY LOU Operator Well No.: L. MAXWELL #25  
LOCATION: Elevation: 964.00 Quadrangle: OXFORD

District: WEST UNION County: DODDRIDGE  
Latitude: 170 Feet South of 39 Deg. 15Min. 0 Sec.  
Longitude 1830 Feet West of 80 Deg. 45 Min. 0 Sec.

Company: ANVIL OIL CO., INC.  
P. O. BOX 1230  
FAIRMONT, WV 26554-1230

Agent: JUSTIN L. HENDERSON

Inspector: MIKE UNDERWOOD  
Permit Issued: 05/28/98  
Well work Commenced: 5-30-98  
Well work Completed: 6-15-99  
Verbal Plugging  
Permission granted on: \_\_\_\_\_  
Rotary  Cable \_\_\_\_\_ Rig,  
Total Depth (feet) 5500  
Fresh water depths (ft) \_\_\_\_\_

Salt water depths (ft) \_\_\_\_\_  
Is coal being mined in area (Y/N)? \_\_\_\_\_  
Coal Depths (ft): \_\_\_\_\_

Casing & Tubing Size	Used in Drilling	Left in Well	Cement Fill Up Cu. Ft.
11 3/4	24		
8 5/8	1163	1163	5
11/16	5017	5017	768

OPEN FLOW DATA

Producing formation Alx, Busan, Belthor + Spers Chiles Pay zone depth (ft) 11945-2926  
 Gas: Initial open flow \_\_\_\_\_ MCF/d Oil: Initial open flow \_\_\_\_\_ Bbl/d  
 Final open flow \_\_\_\_\_ MCF/d Final open flow \_\_\_\_\_ Bbl/d  
 Time of open flow between initial and final tests \_\_\_\_\_ Hours  
 Static rock Pressure \_\_\_\_\_ psig (surface pressure) after \_\_\_\_\_ Hours  
 Second producing formation \_\_\_\_\_ Pay zone depth (ft) \_\_\_\_\_  
 Gas: Initial open flow \_\_\_\_\_ MCF/d Oil: Initial open flow \_\_\_\_\_ Bbl/d  
 Final open flow \_\_\_\_\_ MCF/d Final open flow \_\_\_\_\_ Bbl/d  
 Time of open flow between initial and final tests \_\_\_\_\_ Hours  
 Static rock Pressure \_\_\_\_\_ psig (surface pressure) after \_\_\_\_\_ Hours

NOTE: ON BACK OF THIS FORM PUT THE FOLLOWING: 1). DETAILS OF PERFORATED INTERVALS, FRACTURING OR STIMULATING, PHYSICAL CHANGE, ETC. 2). THE WELL LOG WHICH IS A SYSTEMATIC DETAILED GEOLOGICAL RECORD OF ALL FORMATIONS, INCLUDING COAL ENCOUNTERED BY THE WELLBORE.

For: ANVIL OIL CO., INC.  
By: Justin L. Henderson

Date: April 1 2000

DODD 4439

JUN 9 2000

H/10X - Pent. 41943-41892 - 17 holes

Frac. 143 66/5 H20, 500 gal. Heid, 35000 # SK 413,000 set. 112

X/Basson - Pent. 41688-41148 - 15 holes

Frac. 142 66/5 H20, 750 gal. Heid 22,000 # SK 45,000 set. 112

Ba/Hawm - Pent. 3488-3732 - 12 holes

Frac. 172 66/5 H20, 500 gal. Heid, 35,000 # SK 410,000 set. 112

S Porc 6/10Y. Pent. 2976-3107 - 15 holes

Frac. 431 66/5. H20, 500 gal. Heid, 35,000 # SK. 4. 335,000 set. 112