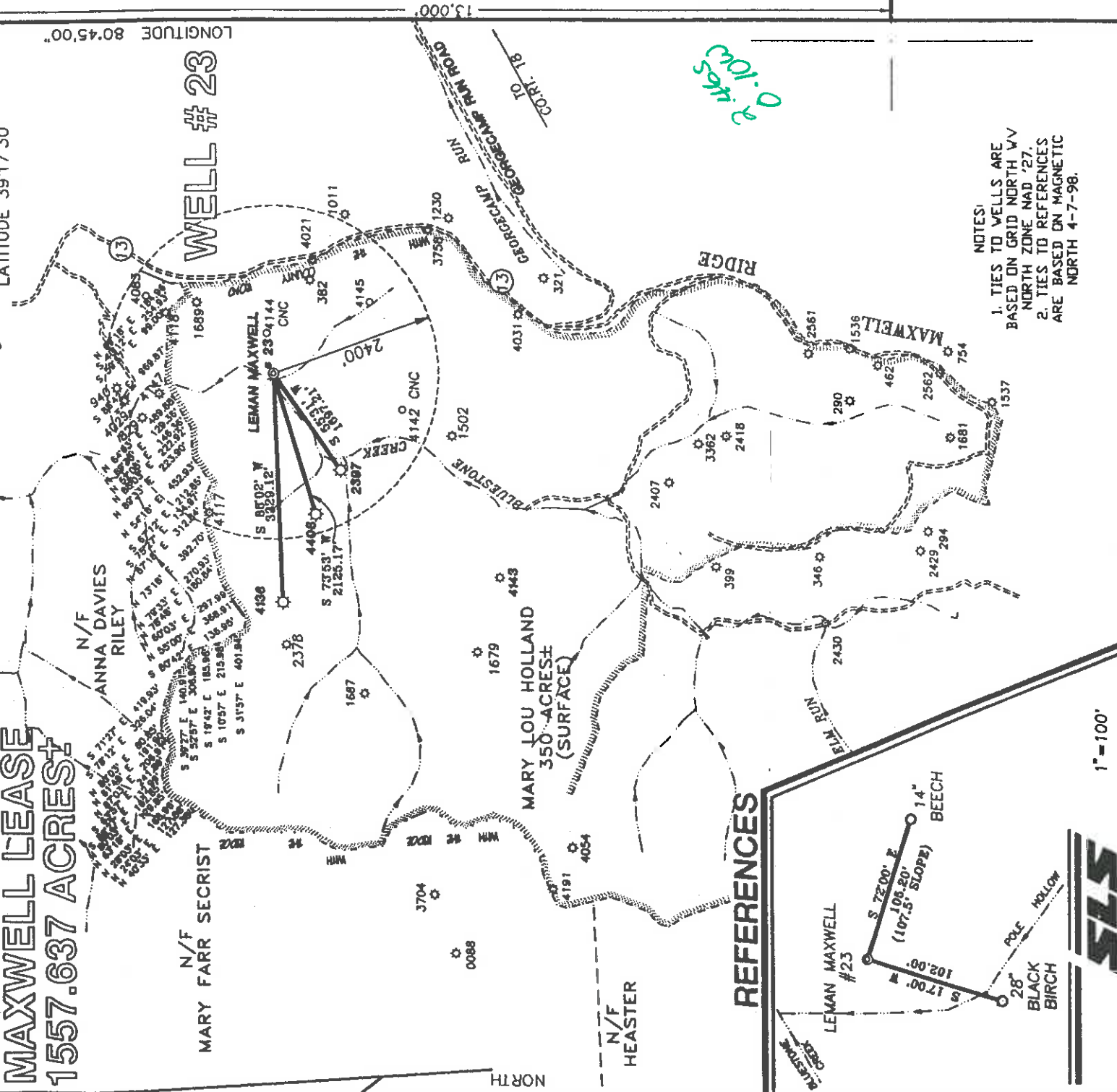


# MAXWELL LEASE 1557.637 ACRES

LATITUDE 39°17'30"

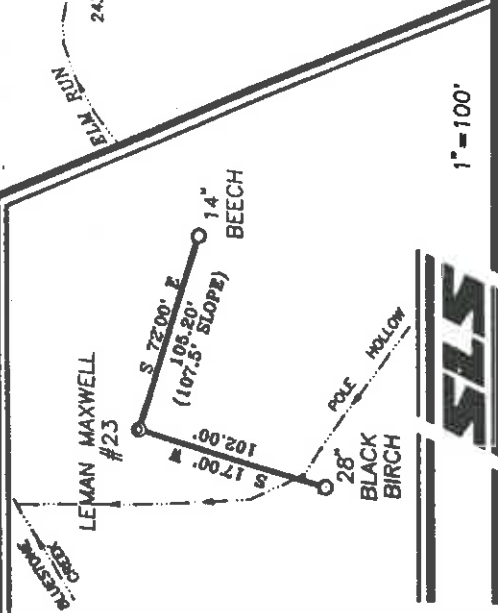
LONGITUDE 80°45'00"

## WELL #23



O.P. 47465

### REFERENCES



NOTES:  
 1. TIES TO WELLS ARE BASED ON GRID NORTH WV NORTH ZONE NAD '27.  
 2. TIES TO REFERENCES ARE BASED ON MAGNETIC NORTH 4-7-98.



I THE UNDERSIGNED, HEREBY CERTIFY THAT THIS PLAT IS CORRECT TO THE BEST OF MY KNOWLEDGE AND BELIEF AND SHOWS ALL THE INFORMATION REQUIRED BY LAW AND THE REGULATIONS ISSUED AND PRESCRIBED BY THE DEPARTMENT OF ENERGY.

P.S. *Gregory A. Smith*  
 677

(+) DENOTES LOCATION OF WELL ON UNITED STATES TOPOGRAPHIC MAPS.

DATE APRIL 14, 19 98  
 OPERATORS WELL NO. LEMAN MAXWELL #23  
 API WELL NO. 47-017-0446  
 STATE COUNTY PERMIT

MINIMUM DEGREE OF ACCURACY 1 / 200 FILE NO. 3149P23 (35-15)  
 PROVEN SOURCE SCALE 1" = 2000'  
 OF ELEVATION TOP OF KNOB ELEVATION 1333'

STATE OF WEST VIRGINIA  
 DIVISION OF ENVIRONMENTAL PROTECTION  
 OFFICE OF OIL AND GAS

WELL TYPE : OIL \_\_\_ GAS  INJECTION \_\_\_ DISPOSAL \_\_\_ "GAS" PRODUCTION  STORAGE \_\_\_ DEEP \_\_\_ SHALLOW

LOCATION : ELEVATION 852' WATERSHED POLE HOLLOW OF BLUESTONE CREEK  
 DISTRICT WEST UNION COUNTY DODDRIDGE QUADRANGLE WEST UNION 7.5'  
 SURFACE OWNER MARY LOU HOLLAND ACREAGE 1557.637  
 ROYALTY OWNER MARY LOU HOLLAND ET.AL. LEASE ACREAGE 1557.637  
 PROPOSED WORK : LEASE NO. \_\_\_\_\_  
 DRILL  CONVERT \_\_\_ DRILL DEEPER \_\_\_ REDRILL \_\_\_ FRACTURE OR STIMULATE  PLUG OFF OLD  
 FORMATION \_\_\_ PERFORATE NEW FORMATION \_\_\_ PLUG AND ABANDON \_\_\_ CLEAN OUT AND REPLUG \_\_\_ OTHER  
 PHYSICAL CHANGE IN WELL (SPECIFY) \_\_\_\_\_ TARGET FORMATION ALEXANDER  
 ESTIMATED DEPTH 5500'

WELL OPERATOR ANVIL OIL COMPANY DESIGNATED AGENT JUSTIN M. HENDERSON  
 ADDRESS P.O. BOX 1230 FAIRMONT, WV 26554-1230 ADDRESS P.O. BOX 427 WEST UNION, WV 26456

Dood 444/6

6-6-99

WR-35 RECEIVED  
Office of Oil & Gas  
Permitting  
JUN 06 2000  
WV Division of  
Environmental Protection

N<sup>c</sup>

11-Jun-98  
API # 47- 17-04446

State of West Virginia  
Division of Environmental Protection  
Section of Oil and Gas

Well Operator's Report of Well Work  
Reviewed JB

Farm name: HOLLAND, MARY LOU Operator Well No.: L. MAXWELL #23

LOCATION: Elevation: 852.00 Quadrangle: WEST UNION

District: WEST UNION County: DODDRIDGE  
Latitude: 13000 Feet South of 39 Deg. 17Min. 30 Sec.  
Longitude 300 Feet West of 80 Deg. 45 Min. 0 Sec.

Company: ANVIL OIL CO., INC.  
P. O. BOX 1230  
FAIRMONT, WV 26554-1230

Agent: JUSTIN L. HENDERSON

Inspector: MIKE UNDERWOOD  
Permit Issued: 06/11/98  
Well work Commenced: 6-21-98  
Well work Completed: 7-10-98  
Verbal Plugging  
Permission granted on: \_\_\_\_\_  
Rotary  Cable \_\_\_\_\_ Rig  
Total Depth (feet) 5038  
Fresh water depths (ft) \_\_\_\_\_

Salt water depths (ft) \_\_\_\_\_  
Is coal being mined in area (Y/N)? \_\_\_\_\_  
Coal Depths (ft): \_\_\_\_\_

Casing & Tubing Size	Used in Drilling	Left in Well	Cement Fill Up Cu. Ft.
1 3/4"	Zd	—	
8 5/8"	870	870	7475
4 1/2"	5000	5000	Surface

OPEN FLOW DATA

Producing formation Lx, Bossan, 2, 3, 4, 5, 6, 7, 8, 9, 10, 11, 12, 13, 14, 15, 16, 17, 18, 19, 20, 21, 22, 23, 24, 25, 26, 27, 28, 29, 30, 31, 32, 33, 34, 35, 36, 37, 38, 39, 40, 41, 42, 43, 44, 45, 46, 47, 48, 49, 50, 51, 52, 53, 54, 55, 56, 57, 58, 59, 60, 61, 62, 63, 64, 65, 66, 67, 68, 69, 70, 71, 72, 73, 74, 75, 76, 77, 78, 79, 80, 81, 82, 83, 84, 85, 86, 87, 88, 89, 90, 91, 92, 93, 94, 95, 96, 97, 98, 99, 100  
Gas: Initial open flow \_\_\_\_\_ MCF/d Oil: Initial open flow \_\_\_\_\_ Pay zone depth (ft) \_\_\_\_\_ Bbl/d  
Final open flow \_\_\_\_\_ MCF/d Final open flow \_\_\_\_\_ Bbl/d  
Time of open flow between initial and final tests \_\_\_\_\_ Hours  
Static rock Pressure \_\_\_\_\_ psig (surface pressure) after \_\_\_\_\_ Hours

4936-2950

Second producing formation \_\_\_\_\_ Pay zone depth (ft) \_\_\_\_\_  
Gas: Initial open flow \_\_\_\_\_ MCF/d Oil: Initial open flow \_\_\_\_\_ Bbl/d  
Final open flow \_\_\_\_\_ MCF/d Final open flow \_\_\_\_\_ Bbl/d  
Time of open flow between initial and final tests \_\_\_\_\_ Hours  
Static rock Pressure \_\_\_\_\_ psig (surface pressure) after \_\_\_\_\_ Hours

NOTE: ON BACK OF THIS FORM PUT THE FOLLOWING: 1). DETAILS OF PERFORATED INTERVALS, FRACTURING OR STIMULATING, PHYSICAL CHANGE, ETC. 2). THE WELL LOG WHICH IS A SYSTEMATIC DETAILED GEOLOGICAL RECORD OF ALL FORMATIONS, INCLUDING COAL ENCOUNTERED BY THE WELLBORE.

For: ANVIL OIL CO. INC.  
By: Justin L. Henderson  
Date: April 1, 2000

0000 4446

JUN 9 2000

Alex. Port. 4879-4938 - 14 holes

Fine - 180 bbls. Haz, 500 gals. Acid, 32,000 # sk. + 418,000 sq. ft.

Benson - Perf. 4587-90 - 13 holes

Fine. 170 bbls. Haz, 1800 gals. Acid, 35,000 # sk. + 412,000 sq. ft.

Balltown - Perf. 3710-13 - 13 holes

Fine. 140 bbls. Haz, 580 gals. Acid, 26,500 # sk. + 300,500 sq. ft.

Speac'hly - Perf. 2950-3064 - 12 holes

Fine - 163 bbls. Haz, 750 gals. Acid, 37,000 # sk. + 350,500 sq. ft.