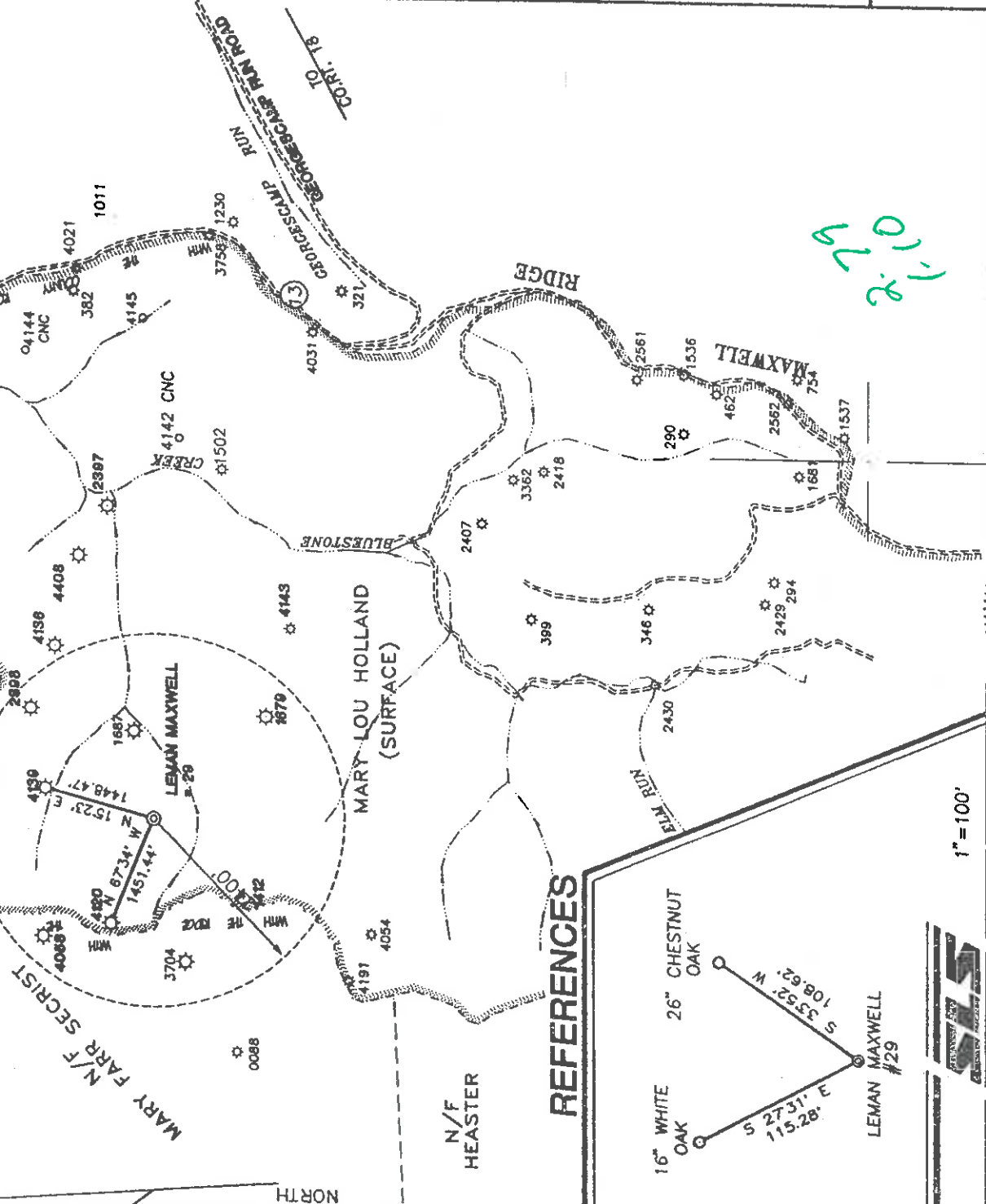


MAXWELL LEASE 1557.637 ACRES

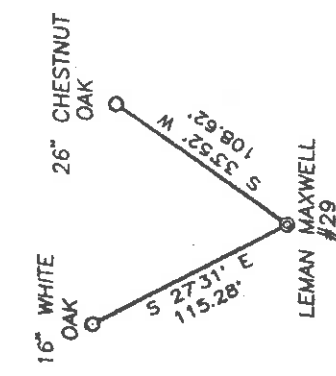
LATITUDE 39°17'30"

LONGITUDE 80°45'00"

WELL #29

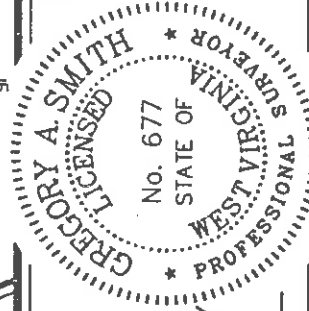


REFERENCES



I THE UNDERSIGNED, HEREBY CERTIFY THAT THIS PLAT IS CORRECT TO THE BEST OF MY KNOWLEDGE AND BELIEF AND SHOWS ALL THE INFORMATION REQUIRED BY LAW AND THE REGULATIONS ISSUED AND PRESCRIBED BY THE DEPARTMENT OF ENERGY.

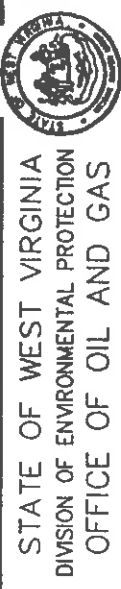
P.S. *Gregory A. Smith*
677



(+) DENOTES LOCATION OF WELL ON UNITED STATES TOPOGRAPHIC MAPS.
DATE JUNE 19, 19 98
OPERATORS WELL NO. LEMAN MAXWELL #29

API WELL NO. 47-017-04452
STATE 47 COUNTY 017 PERMIT 04452

MINIMUM DEGREE OF ACCURACY 1 / 200 FILE NO. 3149P29 (35-31)
PROVEN SOURCE OF ELEVATION TOP OF KNOB ELEVATION 1333' SCALE 1" = 2000'



WELL TYPE : OIL GAS LIQUID WASTE INJECTION DISPOSAL "GAS" PRODUCTION STORAGE DEEP SHALLOW

LOCATION : ELEVATION 1062' WATERSHED TRIBUTARY OF BLUESTONE CREEK

DISTRICT WEST UNION COUNTY DODDRIDGE QUADRANGLE WEST UNION 7.5'

SURFACE OWNER MARY LOU HOLLAND ACREAGE 1557.637

ROYALTY OWNER MARY LOU HOLLAND ET.AL. LEASE ACREAGE 1557.637 LEASE NO. _____

PROPOSED WORK : DRILL CONVERT DRILL DEEPER REDRILL FRACTURE OR STIMULATE PLUG OFF OLD

FORMATION PERFORATE NEW FORMATION PLUG AND ABANDON CLEAN OUT AND REPLUG OTHER _____

PHYSICAL CHANGE IN WELL (SPECIFY) _____ TARGET FORMATION ALEXANDER ESTIMATED DEPTH 5500'

WELL OPERATOR ANVL OIL COMPANY DESIGNATED AGENT JUSTIN M. HENDERSON
ADDRESS P.O.BOX 1230 FAIRMONT, WV 26554-1230 ADDRESS P.O.BOX 427 WEST UNION, WV 26456

6-6-133

D000

4452

RECEIVED
 WV Division of
 Environmental Protection
 JUN 06 2000

Office of Oil and Gas
 MAY 24 2000
 State of West Virginia
 Division of Environmental Protection
 Section of Oil and Gas

22-Jul-98
 API # 47-17-04452

Reviewed RS

Well Operator's Report of Well Work

Farm name: HOLLAND, MARY LOU Operator Well No.: L MAXWELL #29

LOCATION: Elevation: 1,062.00 Quadrangle: WEST UNION
 District: WEST UNION County: DODDRIDGE
 Latitude: 14700 Feet South of 39 Deg. 17Min. 30 Sec.
 Longitude 5790 Feet West of 80 Deg. 45 Min. 0 Sec.

Company: ANVIL OIL CO., INC.
 P. O. BOX 1230
 FAIRMONT, WV 26554-1230

Agent: JUSTIN L. HENDERSON

Inspector: MIKE UNDERWOOD
 Permit Issued: 07/22/98
 Well work Commenced: 8-7-98
 Well work Completed: 8-20-98
 Verbal Plugging
 Permission granted on: _____
 Rotary Cable Rig
 Total Depth (feet) 5387
 Fresh water depths (ft) _____
 Salt water depths (ft) _____
 Is coal being mined in area (Y/N)? _____
 Coal Depths (ft): _____

Casing & Tubing Size	Used in Drilling	Left in Well	Cement Fill Cu. Ft.
1 3/4	24	—	
8 5/8	1100	1100	to surface
4 1/2	5322	5322	837 SA

OPEN FLOW DATA

Producing formation Alex, Basser, B. Flow + 5' interval Pay zone depth (ft) _____
 Gas: Initial open flow _____ MCF/d Oil: Initial open flow _____ Bbl/d
 Final open flow _____ MCF/d Final open flow _____ Bbl/d
 Time of open flow between initial and final tests _____ Hours
 Static rock Pressure _____ psig (surface pressure) after _____ Hours
 Second producing formation _____ Pay zone depth (ft) _____
 Gas: Initial open flow _____ MCF/d Oil: Initial open flow _____ Bbl/d
 Final open flow _____ MCF/d Final open flow _____ Bbl/d
 Time of open flow between initial and final tests _____ Hours
 Static rock Pressure _____ psig (surface pressure) after _____ Hours

5246-3279-

NOTE: ON BACK OF THIS FORM PUT THE FOLLOWING: 1). DETAILS OF PERFORATED INTERVALS, FRACTURING OR STIMULATING, PHYSICAL CHANGE, ETC. 2). THE WELL LOG WHICH IS A SYSTEMATIC DETAILED GEOLOGICAL RECORD OF ALL FORMATIONS, INCLUDING COAL ENCOUNTERED BY THE WELLBORE.

For: ANVIL OIL CO., INC.
 By: Justin L. Henderson
 Date: April 1 2000

D000 4452

Flax, Prod. 5202-46-19 hafs

Flax, using - 125 bbls wets, 500 gals. Acid, 37000 # sd. + 330000 Sd. W. 2

Benson, Prod. 3913-16-10 hafs.

Flax. using - 122 bbls wets, 500 gals. Acid, 39000 # sd. + 335000 Sd. W. 2

Ballman/Bushard - Prod. 3200-4112-10 hafs

Flax. using - 145 bbls wets, 750 gals. Acid, 39000 # sd. + 370,000 Sd. W. 2

Speckley/Kearns - Prod. 3270-3398-17 hafs

Flax. using - 145 bbls wets, 750 gals. Acid, 39000 # sd. + 370000 Sd. W. 2