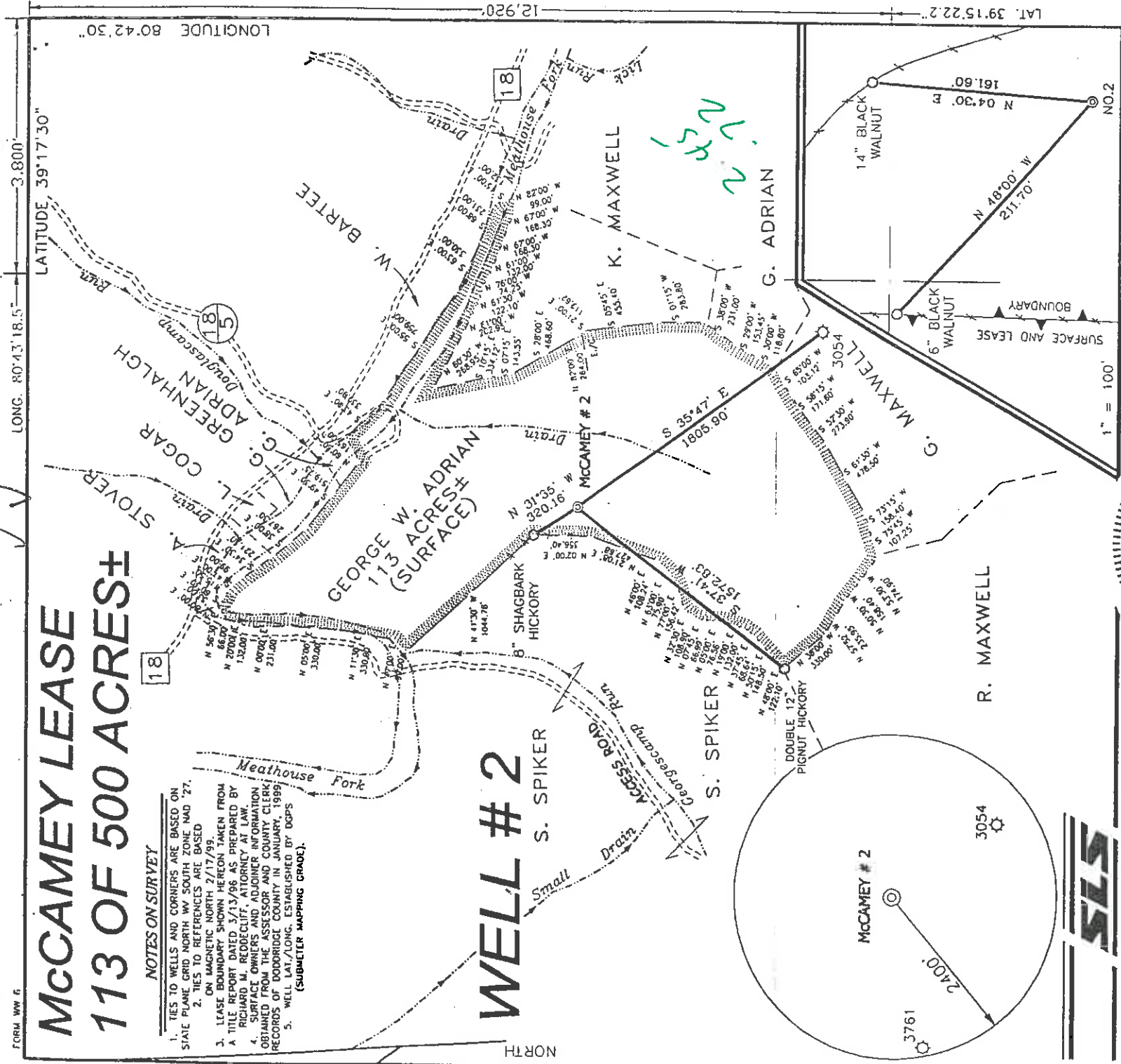


# MCCAMEY LEASE 113 OF 500 ACRES±

## NOTES ON SURVEY

1. LIES TO WELLS AND CORNERS ARE BASED ON STATE PLANE GRID NORTH WV SOUTH ZONE NAD 27.
2. TIES TO REFERENCES ARE BASED ON MAGNETIC NORTH 2/17/99.
3. LEASE BOUNDARY SHOWN HEREON TAKEN FROM A TITLE REPORT DATED 3/13/96 AS PREPARED BY RICHARD M. REDDECLIFF, ATTORNEY AT LAW.
4. SURFACE OWNERS AND ADJOINER INFORMATION OBTAINED FROM THE ASSESSOR AND COUNTY CLERK RECORDS OF DODDRIDGE COUNTY IN JANUARY, 1999.
5. WELL LAT./LONG. ESTABLISHED BY DCP'S (SUBMETER MAPPING GRADE).



LONG. 80°43'18.5"

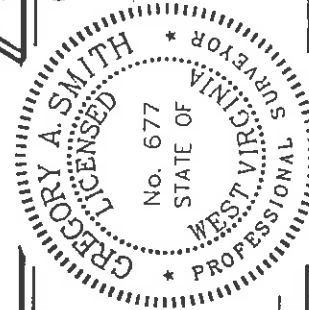
LATITUDE 39°17'30"

LONGITUDE 80°42'30"

NORTH

I THE UNDERSIGNED, HEREBY CERTIFY THAT THIS PLAT IS CORRECT TO THE BEST OF MY KNOWLEDGE AND BELIEF AND SHOWS ALL THE INFORMATION REQUIRED BY LAW AND THE REGULATIONS ISSUED AND PRESCRIBED BY THE DEPARTMENT OF ENERGY.

P.S. *Gregory A. Smith*  
677



(+) DENOTES LOCATION OF WELL ON UNITED STATES TOPOGRAPHIC MAPS.

DATE FEBRUARY 19 19 99  
OPERATORS WELL NO. MCCAMEY # 2

API WELL NO. 47-017 STATE COUNTY PERMIT NO. 04548

MINIMUM DEGREE OF ACCURACY 1 / 200 FILE NO. 4153P2 (69-70)  
PROVEN SOURCE OF ELEVATION SCALE 1" = 800'  
TOP OF KNOB ELEVATION 1263'

STATE OF WEST VIRGINIA  
DIVISION OF ENVIRONMENTAL PROTECTION  
OFFICE OF OIL AND GAS



WELL TYPE : OIL  GAS  INJECTION  DISPOSAL  WASTE  IF "GAS" PRODUCTION  STORAGE  DEEP  SHALLOW

LOCATION : ELEVATION 1097' WATERSHED MEATHOUSE FORK

DISTRICT NEW MILTON COUNTY DODDRIDGE QUADRANGLE SMITHBURG 7.5'

SURFACE OWNER GEORGE W. ADRIAN ET AL ACREAGE 113

ROYALTY OWNER LEWIS MAXWELL HEIRS ct al LEASE ACREAGE 500 OF 1100 LEASE NO. \_\_\_\_\_

PROPOSED WORK :  
 DRILL  CONVERT  DRILL DEEPER  REDRILL  FRACTURE OR STIMULATE  PLUG OFF OLD FORMATION  PERFORATE NEW FORMATION  PLUG AND ABANDON  CLEAN OUT (AND REPLUG) OTHER \_\_\_\_\_  
 PHYSICAL CHANGE IN WELL (SPECIFY) \_\_\_\_\_ TARGET FORMATION ALEXANDER ESTIMATED DEPTH 5600'

WELL OPERATOR KEY OIL COMPANY DESIGNATED AGENT JAN CHAPMAN  
 ADDRESS 22 GARTON PLAZA WESTON, WV 26452 ADDRESS 22 GARTON PLAZA WESTON, WV 26452

COUNTY NAME 0000  
PERMIT 4548

6-6 99

State of West Virginia  
Division of Environmental Protection  
Section of Oil and Gas

*Reviewed* 

Well Operator's Report of Well Work

Farm name: GEORGE W. ADRIAN, ET. AL.

Operator Well No. : McCAMEY #2

LOCATION: Elevation: 1097.00

Quadrangle: SMITHBURG

District: NEW MILTON  
Latitude: 12920 Feet South of 39 Deg. 17 Min. 30 Sec.  
Longitude: 3800 Feet West of 80 Deg. 42 Min. 30 Sec.

County: DODDRIDGE

Company: KEY OIL COMPANY  
22 GARTON PLAZA  
WESTON, WV 26452-0000

Agent: JAN E. CHAPMAN

Inspector: LARRY PARRISH  
Permit Issued: 04/25/00  
Well Work Commenced: 06/26/00  
Well Work Completed: 06/30/00

Verbal Plugging  
Permission granted on: \_\_\_\_\_ Rig  
Rotary X Cable \_\_\_\_\_ Rig  
Total Depth ( feet ) 2671'  
Fresh water depths ( ft ) NONE  
Salt water depths ( ft ) 270' ?

Is coal being mined in area ( Y / N ) ? N  
Coal Depths ( ft ) : NONE

OPEN FLOW DATA

Casing & Tubing Size	Used in Drilling	Left In Well	Cement Fill Up Cu. Ft.
8 5/8"	1098.15'	1098.15'	280 sks To Surface
4 1/2"	2605'	2605'	125 sks
2 3/8"		2475'	

RECEIVED  
Office of Oil & Gas Permitting  
OCT 18 2000  
WV Division of Environmental Protection

Injun Berea

Producing formation Gordon  
Gas: Initial open flow no show MCF / d Oil: Initial open flow 0 Bbl / d  
Final open flow 539 MCF / d Oil: Final open flow show Bbl / d  
Time of open flow between initial and final tests N/A Hours  
Static rock pressure 200 psig ( surface pressure ) after 96 Hours

1821' - 1922'  
2271' - 2290'  
2455' - 2520'

Second producing formation Commingled  
Gas: Initial open flow \_\_\_\_\_ MCF / d Oil: Initial open flow \_\_\_\_\_ Bbl / d  
Final open flow \_\_\_\_\_ MCF / d Oil: Final open flow \_\_\_\_\_ Bbl / d  
Time of open flow between initial and final tests \_\_\_\_\_ Hours  
Static rock pressure \_\_\_\_\_ psig ( surface pressure ) after \_\_\_\_\_ Hours

NOTE: ON BACK OF THIS FORM PUT THE FOLLOWING: 1). DETAILS OF PERFORATED INTERVALS, FRACTURING OR STIMULATING, PHYSICAL CHANGE, ETC. 2). THE WELL LOG WHICH IS A SYSTEMATIC DETAILED GEOLOGICAL RECORD OF ALL FORMATIONS, INCLUDING COAL ENCOUNTERED BY THE WELLBORE.

For: KEY-OIL COMPANY

By:   
Date: September 30, 2000

PRESIDENT

NOV 03 2000

D000 4548

McCamey #2 (47-017 -4548)  
Three Stage Foam Frac - Halliburton

1 <sup>st</sup> Stage:	Gordon ( 12 holes ) ( 2495' to 2514.25' )	60 Quality Foam. 500 gal. 15% HCL. 30,000# 20/40 sand, 321,000 SCF N2, 501 bbls foam.
2 <sup>nd</sup> Stage:	Berea ( 10 holes ) ( 2284.50' to 2286.75' )	60 Quality Foam. 750 gal 15% HCL. 20,000# 20/40 sand, 243,000 SCF N2, 378 bbls foam.
3 <sup>rd</sup> Stage:	Big Injun ( 19 holes ) ( 1839.50' to 1903.25' )	60 Quality Foam. 1,000 gal 15% HCL. 50,000# 20/40 sand, 458,000 SCF N2, 729 bbls foam.

WELL LOG

KB-GL	0	10	
Clay	10	15	
Shale & Red Rock	15	72	
Shale & Sand	72	259	
Sand	259	355	
Shale & Red Rock	355	726	
Sand & Shale	726	1219	
Sand	1219	1343	
Sand & Shale	1343	1729	
Little Lime	1729	1782	
Big Lime	1782	1821	
Big Injun	1821	1922	
Sand & Shale	1922	2063	
Weir	2063	2160	
Sand & Shale	2160	2271	
Berea	2271	2290	
Sand & Shale	2290	2455	
Gordon	2455	2520	
Shale	2520	2671	
TD	2671		

1/2" water @ 270'

Gas Checks

1713' - No Show  
1959' - No Show  
2456' - No Show

PMS 09 17 14