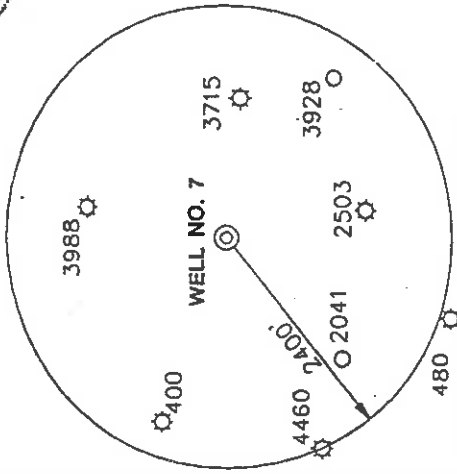
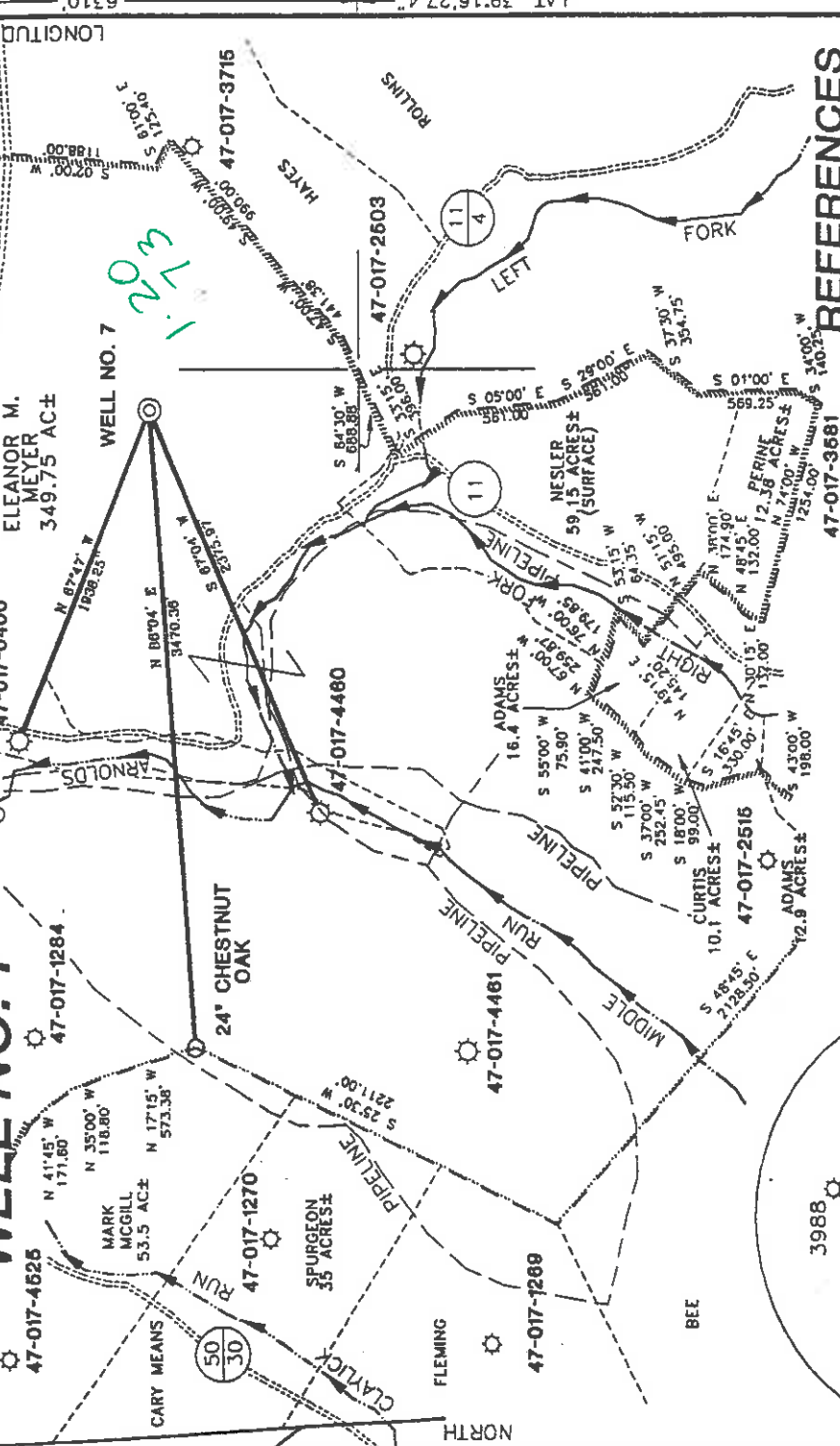


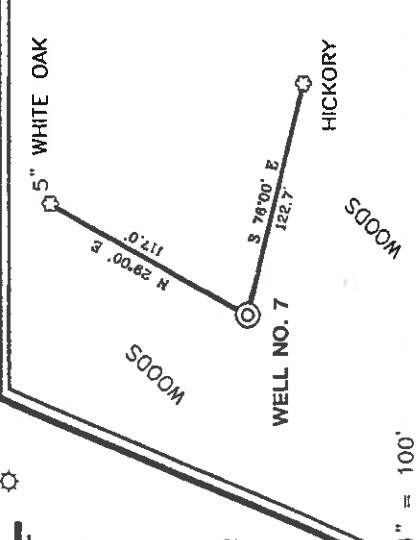
LEWIS MAXWELL LEASE

906 ACRES ± WELL NO. 7

LONG. 80°48'18.6" LATITUDE 39°17'30" LONGITUDE 80°47'30" LAT. 39.16274" 6310



REFERENCES



NOTES ON SURVEY

1. TIES TO WELLS AND CORNERS ARE BASED ON STATE PLANE GRID NORTH WW NORTH ZONE NAD '27.
2. TIES TO REFERENCES ARE BASED ON MAGNETIC NORTH 10-20-2000.
3. LEASE BOUNDARY SHOWN HEREON TAKEN FROM DEED BOOK 112 PAGE 91.
4. SURFACE OWNER AND ADJOINER INFORMATION TAKEN FROM THE ASSESSOR AND COUNTY CLERK RECORDS OF DODDRIDGE COUNTY IN OCTOBER, 2000.
5. WELL LAT./LONG. ESTABLISHED BY DGPS(SUBMETER MAPPING GRADE).



I THE UNDERSIGNED, HEREBY CERTIFY THAT THIS PLAT IS CORRECT TO THE BEST OF MY KNOWLEDGE AND BELIEF AND SHOWS ALL THE INFORMATION REQUIRED BY LAW AND THE REGULATIONS ISSUED AND PRESCRIBED BY THE DEPARTMENT OF ENERGY.

P.S. *Gregory A. Smith*
677

(+) DENOTES LOCATION OF WELL ON UNITED STATES TOPOGRAPHIC MAPS.
DATE OCTOBER 31, 2000
OPERATORS WELL NO. LEWIS MAXWELL NO. 7
API WELL NO. 47-017-017 COUNTY PERMIT

STATE OF WEST VIRGINIA
DIVISION OF ENVIRONMENTAL PROTECTION
OFFICE OF OIL AND GAS

MINIMUM DEGREE OF ACCURACY 1 / 200 FILE NO. 4185P7 (92-35)
PROVEN SOURCE OF ELEVATION JUNCTION OF ROADS ELEVATION 816'
SCALE 1" = 1000'

WELL TYPE : OIL GAS LIQUID WASTE DISPOSAL "GAS" PRODUCTION STORAGE DEEP SHALLOW
LOCATION : ELEVATION 1118' WATERSHED ARNOLD CREEK
DISTRICT CENTRAL COUNTY DODDRIDGE QUADRANGLE WEST UNION 7.5'
SURFACE OWNER ELEANOR M. MEYER ACREAGE 349.75±
ROYALTY OWNER LEWIS MAXWELL HEIRS, et al LEASE ACREAGE 960± LEASE NO. 7496
PROPOSED WORK :
DRILL CONVERT DRILL DEEPER REDRILL FRACTURE OR STIMULATE PLUG OFF OLD FORMATION PERFORATE NEW FORMATION PLUG AND ABANDON CLEAN OUT AND REPLUG OTHER
PHYSICAL CHANGE IN WELL (SPECIFY) _____ TARGET FORMATION ALEXANDER
ESTIMATED DEPTH 5600'

WELL OPERATOR KEY OIL COMPANY DESIGNATED AGENT JAN CHAPMAN
ADDRESS 22 GARTON PLAZA WESTON, WV 26452 ADDRESS 22 GARTON PLAZA WESTON, WV 26452

Dodd 4563

6-6 133 FEB 16 2001

09-10-01
API# 47-017-04563

State of West Virginia
Division of Environmental Protection
Section of Oil and Gas

APB

Well Operators Report of Well Work

Farm name: Meyer Operator Well #: Lewis Maxwell #7

Location: Elevation: 1118' Quadrangle: West Union 7.5'

District: Central County Doddridge
Latitude 6310 feet south of 80 Deg. 48 Min. 18 Sec.
Longitude 3810 feet west of 80 Deg. 47 Min. 30 Sec.

Company: Key Oil Company
22 Garton Plaza
Weston, WV 26452

Agent: Jan Chapman Casing Used in Left in Cement
Drilling Well Fill up

Inspector: Mike Underwood
Permit Issued: 02-14-01 8 5/8 1214 1123 255 sks
Well Work Commenced: 05-30-01
Well Work Completed: 06-4-01 4 1/2 5619 5456 490 sks

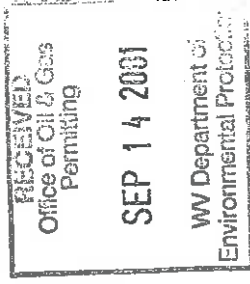
Verbal Plugging
Permission granted on:
Rotary Cable Rig
Total Depth (ft) 5619
Fresh water depth (ft) N/A
Salt water depth (ft) 1937
Is coal being mined in are (Y/N) N
Coal depths (ft) N/A

OPEN FLOW DATA

Producing formaton Alexander Pay zone depths (ft) 5297-5353
Gas: Initial open flow show mcf/d Oil: Initial open flow bbls/day
Final open flow 1579 mcf/d Final open flow bbls/day
Time of open flow between initial and final tests 48 Hours
Static rock pressure 1725 psig (surface pressure) after 48 Hours

Other producing formation Benson/Warren Pay zone depths (ft) 3431-5038
Gas: Initial open flow * mcf/day Oil: Initial open flow bbls/day
Final open flow * mcf/day Final open flow bbls/day
Time of open flow between initial and final tests 48 Hours
Static rock pressure * psig (surface pressure) after 48 Hours

* = Commingled zones



For: Key Oil Company
By: *[Signature]*

Date: 09-01-01

DODD 4563

SEP 21 2001

API # 47-017-04563
Maxwell #7

Stage #1 Alexander	perfs 5296 -5353	sand 600 sks	60 quality foam
Stage #2 Benson/Riley	4902-5038	400 sks	60 quality foam
Stage #3 Riley	4203-4611	500 sks	60 quality foam
Stage #4 Speechley/Warren	3450-3992	500 sks	60 quality foam

Drillers Log

Electric Log Tops

Sh/Sh	0	10	
Clay	10	15	
Sh/Sh	15	78	
Shale	78	199	
Sd	199	218	
Sd/Sh	218	315	
Sd/Sh	315	340	
Sd/Sh	340	464	
Sand	464	475	
Sh/Sh	475	500	
Sh/Sd	500	573	
Sand	573	578	
Sd/Sh	578	714	
Sand	714	740	
Sd/Sh	740	870	
RR/Sd/Sh	870	1146	
Sd/Sh	1146	1399	
Sd	1399	1436	
Sd/Sh	1436	2022	water @ 1937' 1/2"
L. Lime	2022	2035	gas odor @ 2286'
Shale	2035	2066	
B. Lime	2066	2202	
Injun	2202	2247	
Sd/Sh	2247	3459	
Warren	3459	3490	
Sd/Sh	3490	3869	
Ballown	3869	3950	
Sd/Sh	3950	4652	
Riley	4652	4652	
Sd/Sh	4652	5050	
Benson	5050	5065	
Sd/Sh	5065	5310	
Alexander	5310	5342	
Sd/Sh	5342	5619	
TD	5619		