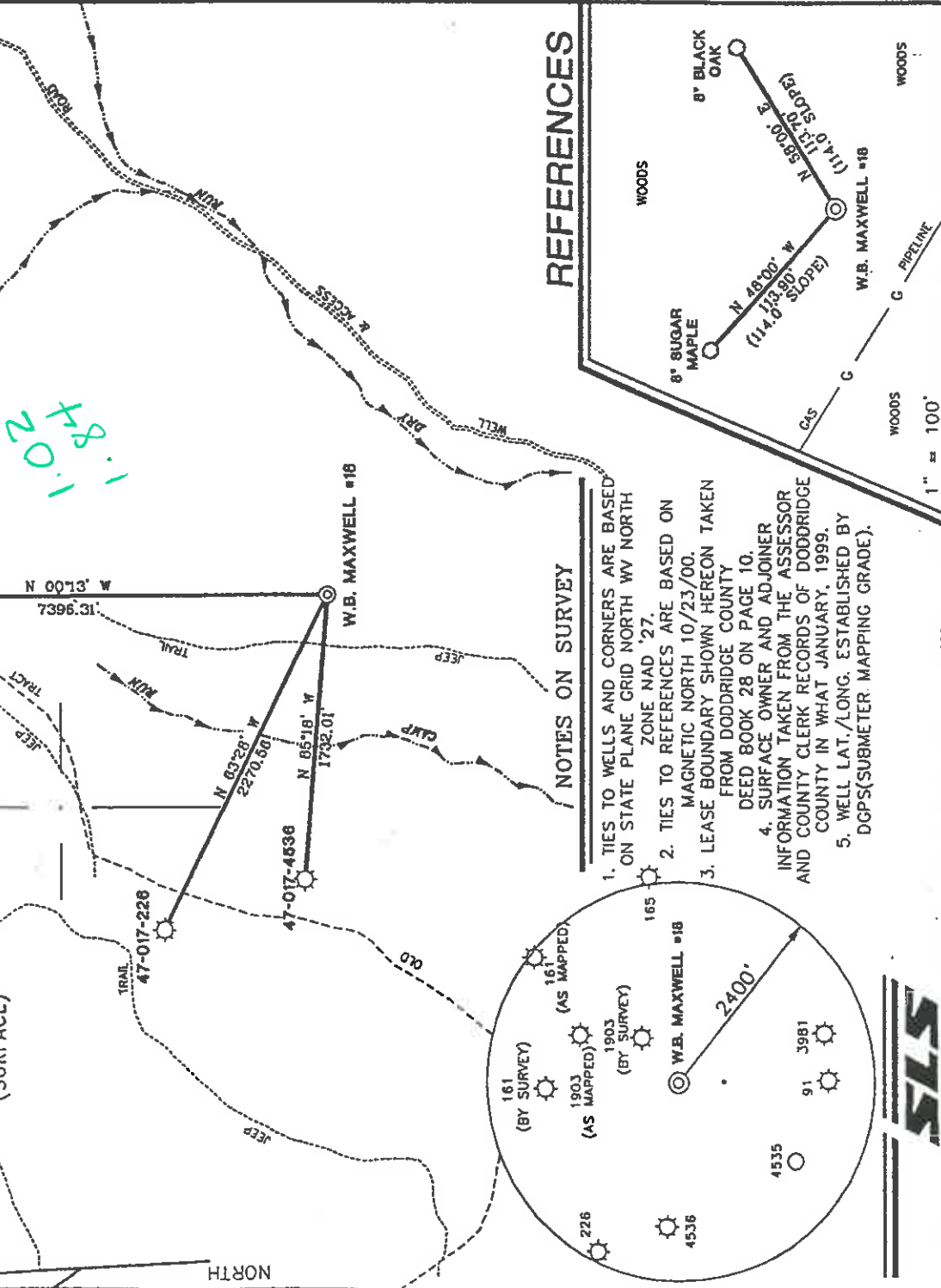


W.B. MAXWELL LEASE 2400 ACRES± WELL NO. 18

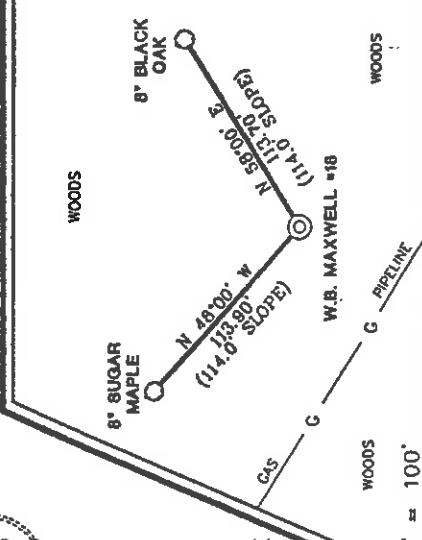
I.L. MORRIS
6,604 ACRES±
(SURFACE)



NOTES ON SURVEY

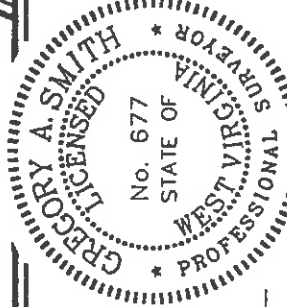
1. TIES TO WELLS AND CORNERS ARE BASED ON STATE PLANE GRID NORTH WV NORTH ZONE NAD '27.
2. TIES TO REFERENCES ARE BASED ON MAGNETIC NORTH 10/23/00.
3. LEASE BOUNDARY SHOWN HEREON TAKEN FROM DODDRIDGE COUNTY DEED BOOK 28 ON PAGE 10.
4. SURFACE OWNER AND ADJOINER INFORMATION TAKEN FROM THE ASSESSOR AND COUNTY CLERK RECORDS OF DODDRIDGE COUNTY IN WHAT JANUARY, 1999.
5. WELL LAT./LONG. ESTABLISHED BY DGPS(SUBMETER MAPPING GRADE).

REFERENCES



I THE UNDERSIGNED, HEREBY CERTIFY THAT THIS PLAT IS CORRECT TO THE BEST OF MY KNOWLEDGE AND BELIEF AND SHOWS ALL THE INFORMATION REQUIRED BY LAW AND THE REGULATIONS ISSUED AND PRESCRIBED BY THE DEPARTMENT OF ENERGY.

P.S. 677 *Gregory A. Smith*



(+) DENOTES LOCATION OF WELL ON UNITED STATES TOPOGRAPHIC MAPS.

DATE OCTOBER 23 20 00
 OPERATORS WELL NO. W.B. MAXWELL #18
 API WELL NO. 47-017-017 STATE COUNTY PERMIT NO. 04584

MINIMUM DEGREE OF ACCURACY 1 / 200 FILE NO. 4152P18(92-32)
 PROVEN SOURCE SCALE 1" = 1000'
 OF ELEVATION TOP OF KNOB 1421'

STATE OF WEST VIRGINIA
 DIVISION OF ENVIRONMENTAL PROTECTION
 OFFICE OF OIL AND GAS

WELL TYPE : OIL GAS LIQUID WASTE INJECTION DISPOSAL "GAS" PRODUCTION STORAGE DEEP SHALLOW

LOCATION : ELEVATION 1268' WATERSHED DRY RUN OF SOUTH FORK HUGHES RIVER
 DISTRICT SOUTHWEST COUNTY DODDRIDGE QUADRANGLE OXFORD 7.5'

SURFACE OWNER I.L. MORRIS ACREAGE 6,603.75
 ROYALTY OWNER W.B. MAXWELL HEIRS ET AL LEASE ACREAGE 2400
 PROPOSED WORK : LEASE NO. _____

DRILL CONVERT DRILL DEEPER REDRILL FRACTURE OR STIMULATE PLUG OFF OLD
 FORMATION PERFORATE NEW FORMATION PLUG AND ABANDON CLEAN OUT AND REPLUG OTHER _____
 PHYSICAL CHANGE IN WELL (SPECIFY) _____ TARGET FORMATION ALEXANDER
 ESTIMATED DEPTH MAY 25600 2001

WELL OPERATOR KEY OIL COMPANY DESIGNATED AGENT JAN CHAPMAN
 ADDRESS 22 GARTON PLAZA WESTON, WV 26452
 COUNTY NAME DODD PERMIT 4584
 ADDRESS 22 GARTON PLAZA WESTON, WV 26452

6-6 133

09-10-01
API# 47-017-04584

State of West Virginia
Division of Environmental Protection
Section of Oil and Gas

APB

Well Operators Report of Well Work

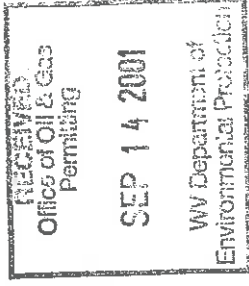
Farm name: I.L. Morris Operator Well #: W.B. Maxwell #18

Location: Elevation: 1268' Quadrangle: Oxford 7.5'

District: Southwest County Doddridge
Latitude 250 feet south of 39 Deg. 12 Min. 30 Sec.
Longitude 9720 feet west of 80 Deg. 45 Min. 00 Sec.

Company: Key Oil Company
22 Garton Plaza
Weston, WV 26452

Agent: Jan Chapman Casing Used in Left in Cement
Drilling Well Well Fill up
Inspector: Mike Underwood
Permit Issued: 05-3-01 11 3/4 140 132 55 sks
Well Work Commenced: 06-28-01 8 5/8 1738 1648 360 sks
Well Work Completed: 07-4-01 4 1/2 5367 5317 480 sks
Verbal Plugging
Permission granted on:
Rotary Cable Rig
Total Depth (ft) 5367'
Fresh water depth (ft) 878'
Salt water depth (ft) N/A
Is coal being mined in are (Y/N) N
Coal depths (ft) N/A



OPEN FLOW DATA

Producing formation Alexander Pay zone depths (ft) 5013-5212
Gas: Initial open flow show mcf/d Oil: Initial open flow bbls/day
Final open flow 1532 mcf/d Final open flow bbls/day
Time of open flow between initial and final tests 48 Hours
Static rock pressure 1650 psig (surface pressure) after 48 Hours

Other producing formation Benson/Warren Pay zone depths (ft) 3245-4854
Gas: Initial open flow * mcf/day Oil Initial open flow bbls/day
Final open flow * mcf/day Final open flow bbls/day
Time of open flow between initial and final tests 48 Hours
Static rock pressure * psig (surface pressure) after 48 Hours

* = Commingled zones

For: Key Oil Company
By: *[Signature]*

Date: 09-01-01

D000 4584

SEP 21 2001

API # 47-017-04564

W. B. Maxwell #18

Stage #1	perfs	sand	60 quality foam
Alexander	5013-5202	600 sks	60 quality foam
Stage #2			
Benson/Riley	4780-4854	400 sks	60 quality foam
Stage #3			
Riley	4000-4429	500 sks	60 quality foam
Stage #4			
Speechley/Warren	4256-3360	500 sks	60 quality foam

Drillers Log

Electric Log Tops

Sh	0	10	
Sd	10	14	
Sand	14	25	
Sd/Sh	25	50	
Sd	50	125	
Sand	125	183	
Shale	183	203	
Sand	203	220	
Shale	220	250	
Sand	250	235	
Sd/Sh	235	306	
Shale	306	358	
Sd/Sh	358	431	
Sd/Sh	431	486	water @ 417'
Sh/	486	533	
Sd/Sh	533	653	
Redrock	653	665	
Sd/Sh	665	720	
Sand	720	778	
Sd/Sh	778	1184	
Sd/Sh	1184	1320	
Sd/	1320	1422	
Sd/Sh	1422	1841	
L. Lime	1841	1877	
B. Lime	1877	1998	Gas Test @ 1927'
Injun	1998	2062	
Sd/Sh	2062	2837	Gas Test @ 2110'
Sd/Sh	2837	3280	Gas Test @ 3228'
Warren	3280	3325	
Sd/Sh	3325	3775	
Baltown	3775	3895	
Sh	3895	4490	
Riley	4490	4551	
Sd/Sh	4551	4870	
Benson	4870	4884	
Sd/Sh	4884	5168	
Alexander	5168	5230	
Sd/Sh	5230	5367	
TD	5367		