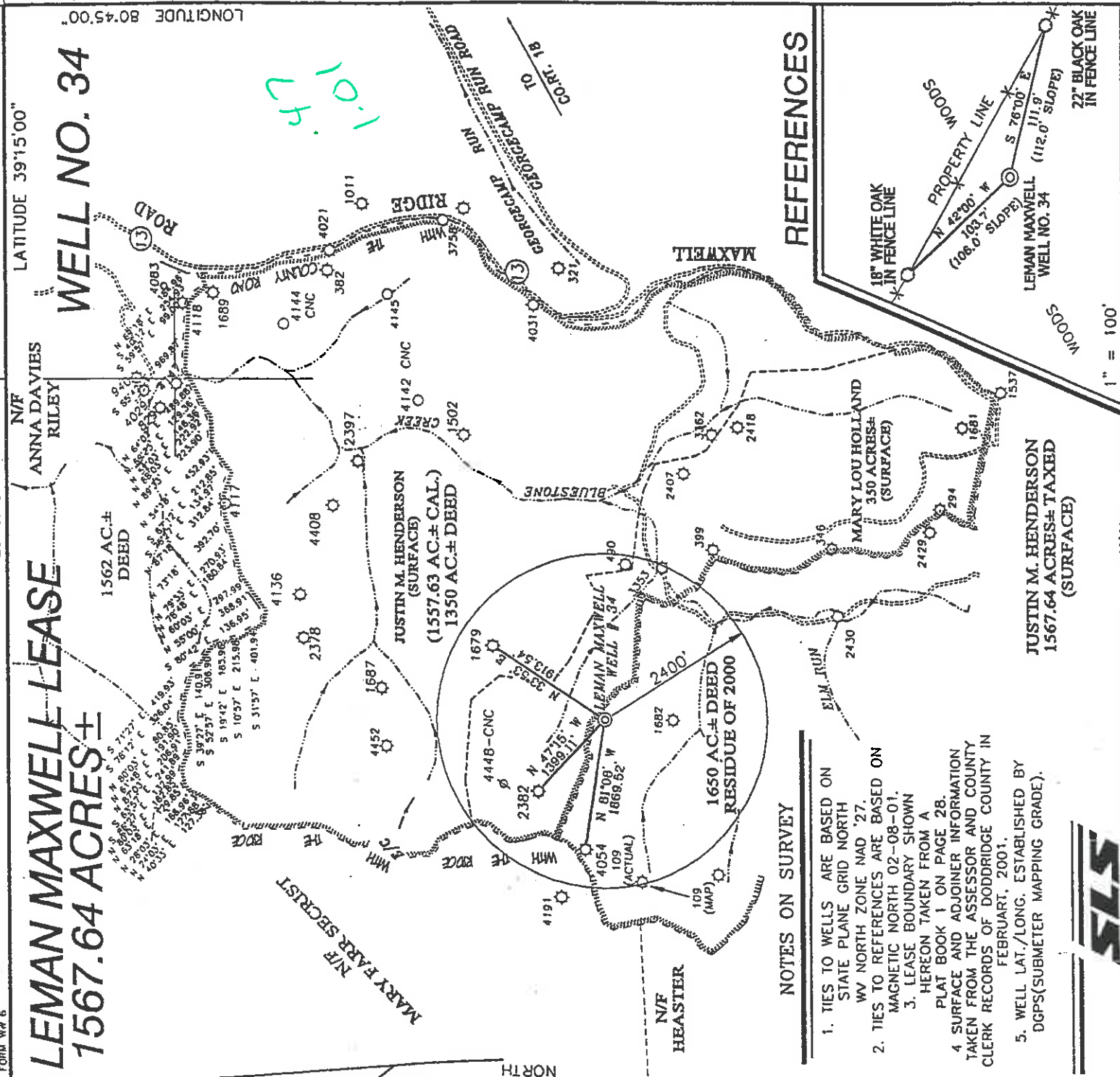


LEMAN MAXWELL LEASE 1567.64 ACRES±

WELL NO. 34

1.017



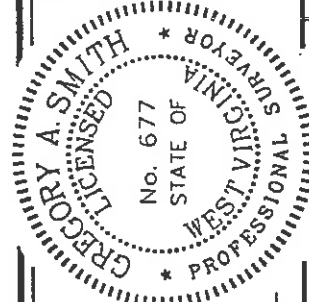
NOTES ON SURVEY

1. TIES TO WELLS ARE BASED ON STATE PLANE GRID NORTH WV NORTH ZONE NAD '27. TIES TO REFERENCES ARE BASED ON MAGNETIC NORTH 02-08-01.
2. TIES TO REFERENCES ARE BASED ON MAGNETIC NORTH 02-08-01.
3. LEASE BOUNDARY SHOWN HEREON TAKEN FROM A PLAT BOOK 1 ON PAGE 28.
4. SURFACE AND ADJOINER INFORMATION TAKEN FROM THE ASSESSOR AND COUNTY CLERK RECORDS OF DODDRIDGE COUNTY IN FEBRUARY, 2001.
5. WELL LAT./LONG. ESTABLISHED BY DGPS(SUBMETER MAPPING GRADE).



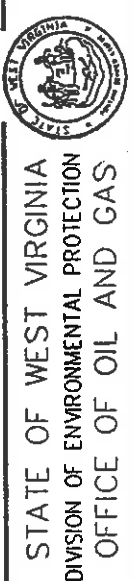
I THE UNDERSIGNED, HEREBY CERTIFY THAT THIS PLAT IS CORRECT TO THE BEST OF MY KNOWLEDGE AND BELIEF AND SHOWS ALL THE INFORMATION REQUIRED BY LAW AND THE REGULATIONS ISSUED AND PRESCRIBED BY THE DEPARTMENT OF ENERGY.

P.S. 677
Gregory A. Smith



(+) DENOTES LOCATION OF WELL ON UNITED STATES TOPOGRAPHIC MAPS.
DATE FEBRUARY 12, 20 01
OPERATORS WELL NO. LEMAN MAXWELL NO. 34

API WELL NO. 47-017-04602
STATE COUNTY PERMIT



MINIMUM DEGREE OF ACCURACY 1 / 200 FILE NO. 3100P34 (88-42)
SCALE 1" = 2000'
PROVEN SOURCE JUNCTION OF ROADS ELEVATION 897'

WELL TYPE : OIL GAS X INJECTION WASTE LIQUID WASTE IF
DISPOSAL "GAS" PRODUCTION X STORAGE X DEEP X SHALLOW X

LOCATION : ELEVATION 1143' WATERSHED TRIBUTARY OF BLUESTONE CREEK
DISTRICT WEST UNION COUNTY DODDRIDGE QUADRANGLE OXFORD 7.5

SURFACE OWNER JUSTIN M. HENDERSON ACREAGE 1567.64±
ROYALTY OWNER JUSTIN M. HENDERSON, ET AL 1567.64 TAXED LEASE ACREAGE 1650± OF 2000±

PROPOSED WORK :
DRILL X CONVERT DRILL DEEPER REDRILL X FRACTURE OR STIMULATE X PLUG OFF OLD
FORMATION PERFORATE NEW FORMATION PLUG AND ABANDON CLEAN OUT AND REPLUG OTHER
PHYSICAL CHANGE IN WELL (SPECIFY) TARGET FORMATION ALEXANDER
ESTIMATED DEPTH 5500' LEASE NO.

WELL OPERATOR ANVIL OIL COMPANY DESIGNATED AGENT JUSTIN M. HENDERSON
ADDRESS P.O. BOX 230 FAIRMONT, WV 26554 ADDRESS P.O. BOX 427 WEST UNION, WV 26456

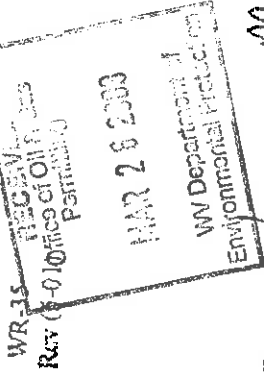
DODD. 4602

MAR-26-2003 12:49 AM AHVILCOMPANIES

5043631362

GCS

P.01



DATE: 9-19-01

API #: 47-017-4602

State of West Virginia
 Department of Environmental Protection
 Office of Oil and Gas

Well Operator's Report of Well Work

Farm name: Seaman Maxwell Operator Well No.: # 34

LOCATION: Elevation: 1143' Quadrangle: Oxford 7.5

District: West Union County: Doddridge
 Latitude: 39 Deg. 15 Min. 00 Sec.
 Longitude: 80 Deg. 46 Min. 08.3 Sec.

Company: Anvil Oil & Gas

Address:	Casing & Tubing	Used in drilling	Left in well	Cement fill up Cu. Ft.
<u>PO Box 1230</u>	<u>3 3/4"</u>	<u>30'</u>		
<u>FLATMENT WV 2653V</u>				
Agent: <u>JUSTIN HENDERSON</u>	<u>3 3/4"</u>	<u>1148'</u>	<u>1148'</u>	<u>To Surface</u>
Inspector:				
Date Permit Issued: <u>2-12-2001</u>	<u>4 1/2"</u>	<u>5280'</u>	<u>5220'</u>	<u>720' 543'</u>
Date Well Work Commenced: <u>7-9-01</u>				
Date Well Work Completed: <u>7-29-01</u>				
Verbal Plugging:				
Date Permission granted on:				
Rotary Cable Rig				
Total Depth (feet): <u>5500</u>				
Fresh Water Depth (ft.):				
Salt Water Depth (ft.):				
Is coal being mined in area (N/Y)? <u>NO</u>				
Coal Depths (ft.):				

OPEN FLOW DATA

Producing formation: Log Run
 Gas: Initial open flow 5.5 MCF/d Oil: Initial open flow 5.1 Bbl/d
 Final open flow 4.8 MCF/d Final open flow 4.8 Bbl/d
 Time of open flow between initial and final tests 4 Hours
 Static rock Pressure 1340 psig (surface pressure) after 4 1/2 Hours

Second producing formation
 Gas: Initial open flow MCF/d Oil: Initial open flow Bbl/d
 Final open flow MCF/d Final open flow Bbl/d
 Time of open flow between initial and final tests Hours
 Static rock Pressure psig (surface pressure) after Hours

NOTE: ON BACK OF THIS FORM PUT THE FOLLOWING: 1). DETAILS OF PERFORATED INTERVALS, FRACTURING OR STIMULATING, PHYSICAL CHANGE, ETC. 2). THE WELL LOG WHICH IS A SYSTEMATIC DETAILED GEOLOGICAL RECORD OF ALL FORMATIONS INCLUDING COAL ENCOUNTERED BY THE WELLBORE.

Signed: [Signature]
 By: President Anvil Oil & Gas

0000 4602

WT-017-41602

QOS

1. Alex - Park 5138-5148 - 15 holes

 Frac - 858 bbls H₂O, Acid 500 gals, sand 35000# N₂ 350,000 SK. CL₄ SK

2. Bensen - Park - 41705-41709?

 Frac. - 910 bbls. H₂O, Acid 500 gals SD. 25,000# N₂. 289,000 SK

3. Riley - Park - 41722 - 41728

 Frac. - 135 bbls H₂O, Acid 500 gals. SD. 25,000# N₂. 339,000 SK

4. Spoochley - Park - 3276 - 3154

 Frac - 958 bbls H₂O, Acid 500 gals SD. 37,000# N₂. 388,000 SK

