

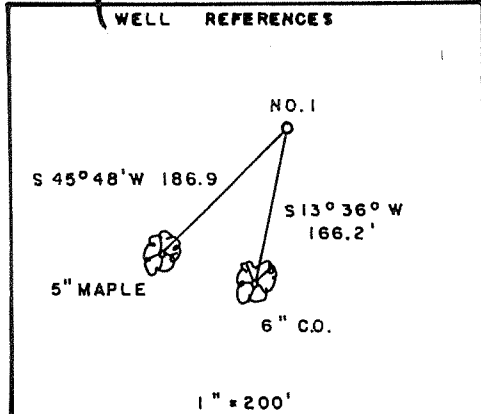
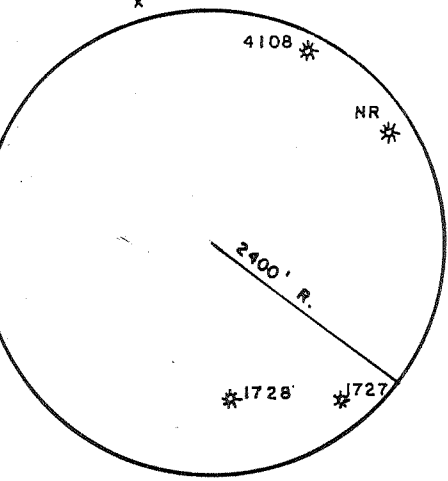
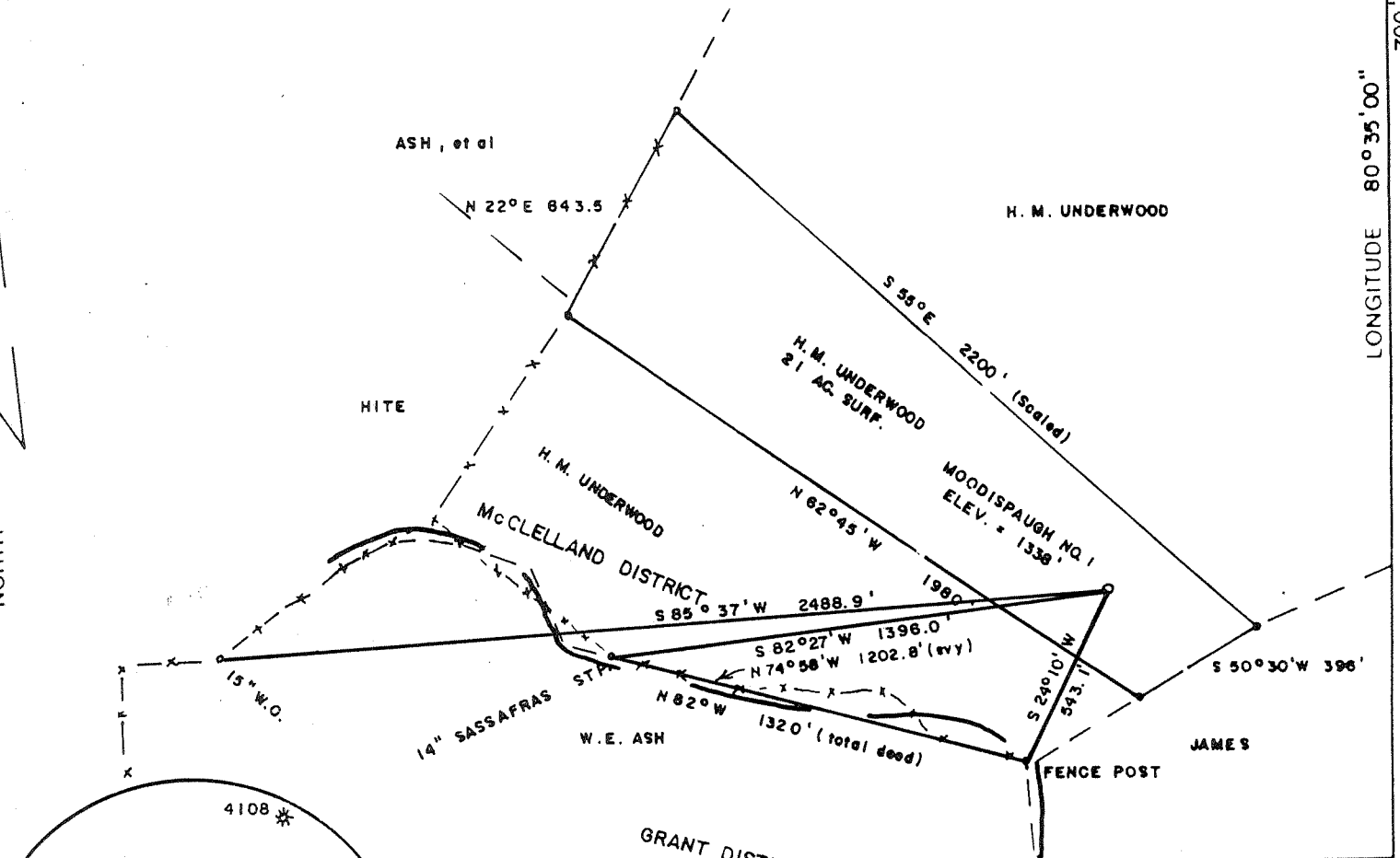
9620' W

LATITUDE 39° 20' 00"

LONGITUDE 80° 56' 08"

1.13  
1.82

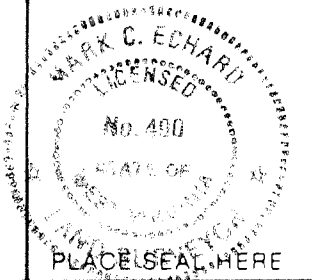
# MOODISPAUGH LEASE 21 AC.



(+) DENOTES LOCATION OF WELL ON UNITED STATES TOPOGRAPHIC MAPS

FILE NO. \_\_\_\_\_  
 DRAWING NO. \_\_\_\_\_  
 SCALE 1" = 500'  
 MINIMUM DEGREE OF ACCURACY 1/200  
 PROVEN SOURCE OF ELEVATION TOP OF KNOB SE OF LEASE ELEV. = 1275'

I THE UNDERSIGNED, HEREBY CERTIFY THAT THIS PLAT IS CORRECT TO THE BEST OF MY KNOWLEDGE AND BELIEF AND SHOWS ALL THE INFORMATION REQUIRED BY LAW AND THE REGULATIONS ISSUED AND PRESCRIBED BY THE DEPARTMENT OF ENERGY.  
 (SIGNED) Mark C. Echard  
 R.P.E. \_\_\_\_\_ L.L.S. 490



STATE OF WEST VIRGINIA  
 Division of Environmental Protection  
 OFFICE OF OIL AND GAS



DATE JUNE 8, 2001  
 OPERATOR'S WELL NO. ONE  
 API WELL NO. 47 017 04612

WELL TYPE: OIL    GAS    LIQUID INJECTION    WASTE DISPOSAL     
 (IF "GAS") PRODUCTION    STORAGE    DEEP    SHALLOW     
 LOCATION: ELEVATION 1338 WATERSHED POREY HOLLOW OF BIG BATTLE RUN  
 DISTRICT McCLELLAND COUNTY DODDRIDGE  
 QUADRANGLE SALEM

SURFACE OWNER HERALD MICHAEL UNDERWOOD ACREAGE 21  
 OIL & GAS ROYALTY OWNER RETA J. MOODISPAUGH LEASE ACREAGE 21

PROPOSED WORK: DRILL    CONVERT    DRILL DEEPER    REDRILL    FRACTURE OR STIMULATE    PLUG OFF OLD FORMATION    PERFORATE NEW FORMATION    OTHER PHYSICAL CHANGE IN WELL (SPECIFY) \_\_\_\_\_

PLUG AND ABANDON    CLEAN OUT AND REPLUG     
 TARGET FORMATION GORDON / INJUN ESTIMATED DEPTH 3100'  
 WELL OPERATOR D.A.C. DESIGNATED AGENT KENNETH MASON  
 ADDRESS P.O. BOX 99 ALMA, WV 26320 ADDRESS P.O. BOX 99 ALMA, WV 26320

COUNTY NAME DODD  
PERMIT 4612

JUN 15 2001

6-6 99

08-15-01  
API# 47-017-04612

State of West Virginia  
Division of Environmental Protection  
Section of Oil and Gas

Received AR

Well Operators Report of Well Work

Farm name: Underwood Operator Well #: Moodispaugh #1  
Location: Elevation: 1338' Quadrangle: Salem  
District: McClelland County: Doddridge  
Latitude 700 feet south of 39 Deg. 20 Min. 00 Sec.  
Longitude 9,620 feet west of 80 Deg. 35 Min. 00 Sec.

Company: Drilling Appalachian Corporation  
P.O. Box 99  
Alma WV 26320

Agent:	Kenneth Mason	Casing	Used in Drilling	Left in Well	Cement Fill up
Inspector:	Mike Underwood				
Permit Issued:	06-13-01	113/4	150	131	100sks
Well Work Commenced:	07-15-01				
Well Work Completed:	07-20-01	8 5/8	1625	1594	330 sks
Verbal Plugging					
Permission granted on:		4 1/2	3204	3157	290 sks
Rotary	Cable	Rig			
Total Depth (ft)	3204'				
Fresh water depth (ft)	1300'				
Salt water depth (ft)	N/A				
Is coal being mined in are (Y/N)	N				
Coal depths (ft)	790-795				

RECEIVED  
Office of Oil & Gas  
Permitting  
  
AUG 22 2001  
  
WV Department of  
Environmental Protection

OPEN FLOW DATA

Producing formation	Gordon	Pay zone depths (ft)	2870-3056
Gas: Initial open flow	show mcf/d	Oil: Initial open flow	bbbls/day
Final open flow	233 show mcf/d	Final open flow	bbbls/day
Time of open flow between initial and final tests			48 Hours
Static rock pressure	350# psig (surface pressure)	after	48 Hours
Other producing formation	Big Injun	Pay zone depths (ft)	2280-2392
Gas: Initial open flow	* mcf/day	Oil: Initial open flow	bbbls/day
Final open flow	* mcf/day	Final open flow	bbbls/day
Time of open flow between initial and final tests			48 Hours
Static rock pressure	psig (surface pressure)	after	48 Hours

\* = commingled zones

For: Drilling Appalachian Corporation

By: [Signature]  
Date: 08-15-01

AUG 24 2001

0000 4612

Moodispaugh #1  
07-24-01

Stage #1	perfs	sand	avg rate	isip
Gordon	2861-3044	300 sks	28 bpm	2188#
Stage #2				
Big Injun	2268-2384	300 sks	28 bpm	2328#

Drillers Log

Sh	0	180	
Sd	180	225	
Sd/Sh	225	790	
coal	790	795	
Sd/Sh	795	930	damp @ 205'
Coal	930	937	
Sd/Sh	937	1084	
Sd	1084	1121	
Sd/Sh	1121	2183	
Lime	2183	2192	
Sh	2192	2220	
Lime	2220	2282	
Sd	2282	2332	gas ck @ 2284 odor
Sd/Sh	2332	2526	gas ck @ 2302 odor
Sd	2526	2557	
Sh	2557	3045	gas ck @ 84 mcfs
Sd	3045	3060	
Sh	3060	3204	

Electric Log Tops

Big Lime	2137
Berea	2698
Gordon	2936

