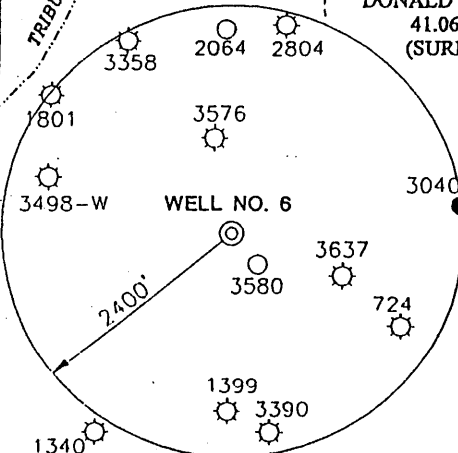
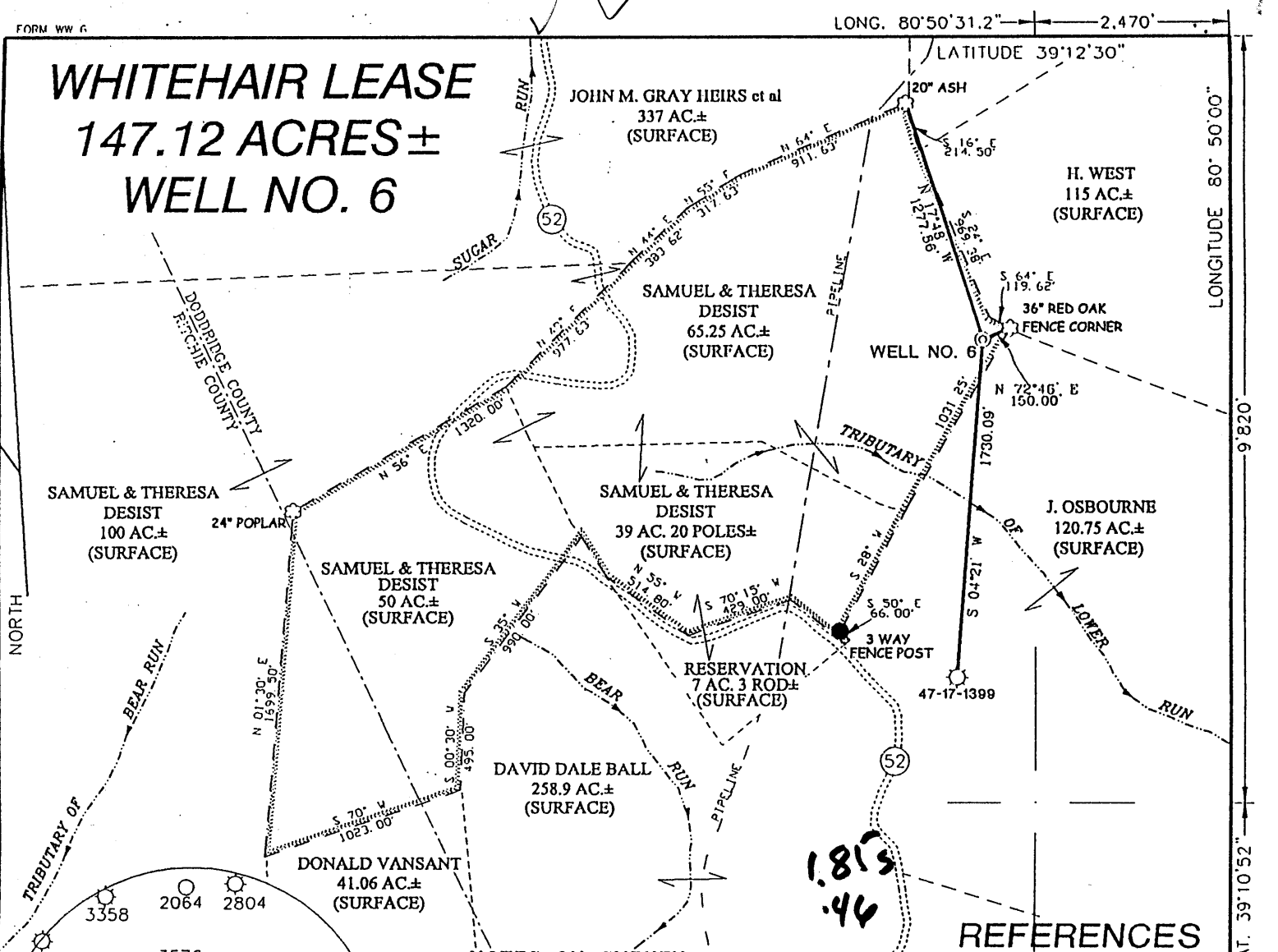


WHITEHAIR LEASE 147.12 ACRES± WELL NO. 6

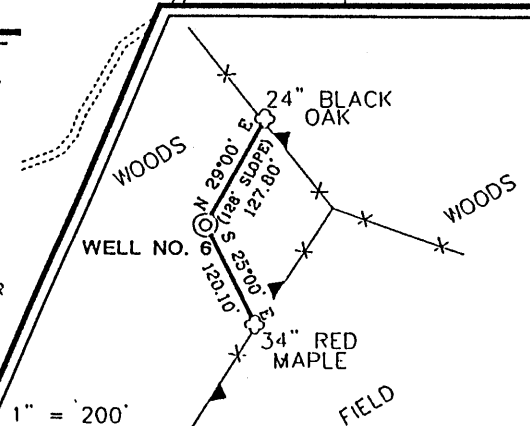


NOTES ON SURVEY

1. TIES TO WELLS AND CORNERS ARE BASED ON STATE PLANE GRID NORTH WV NORTH ZONE NAD '27.
2. TIES TO REFERENCES ARE BASED ON MAGNETIC NORTH 5/14/01
3. LEASE BOUNDARY SHOWN HEREON TAKEN FROM DEED BOOK 245 PAGES 188-189. RECORDED IN THE DODDRIDGE COUNTY CLERKS OFFICE
4. SURFACE OWNER AND ADJOINER INFORMATION TAKEN FROM THE ASSESSOR AND COUNTY CLERK RECORDS OF DODDRIDGE COUNTY IN JUNE, 2001.
5. WELL LAT./LONG. ESTABLISHED BY DGPS(SUBMETER MAPPING GRADE).

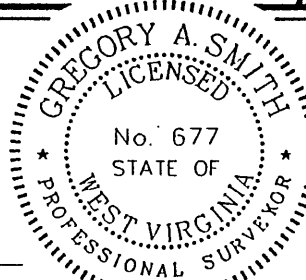
1.815
46

REFERENCES



I THE UNDERSIGNED, HEREBY CERTIFY THAT THIS PLAT IS CORRECT TO THE BEST OF MY KNOWLEDGE AND BELIEF AND SHOWS ALL THE INFORMATION REQUIRED BY LAW AND THE REGULATIONS ISSUED AND PRESCRIBED BY THE DEPARTMENT OF ENVIRONMENTAL PROTECTION

P.S. 677 Gregory A. Smith



(+) DENOTES LOCATION OF WELL ON UNITED STATES TOPOGRAPHIC MAPS.
 DATE JUNE 14, 2001
 OPERATORS WELL NO. WHITEHAIR NO.6
 API WELL NO. 47-17-04619
 STATE COUNTY PERMIT

MINIMUM DEGREE OF ACCURACY 1 / 200 FILE NO. 4352P6(104-28)
 PROVEN SOURCE OF ELEVATION TOP OF KNOB ELEVATION 1214' SCALE 1" = 800'

STATE OF WEST VIRGINIA
 DIVISION OF ENVIRONMENTAL PROTECTION
 OFFICE OF OIL AND GAS

WELL TYPE : OIL GAS LIQUID INJECTION WASTE DISPOSAL IF "GAS" PRODUCTION STORAGE DEEP SHALLOW

LOCATION : ELEVATION 1088' WATERSHED TRIBUTARY OF LOWER RUN
 DISTRICT SOUTHWEST COUNTY DODDRIDGE QUADRANGLE OXFORD 7.5'
 SURFACE OWNER SAMUEL AND THERESA F. DESIST ACREAGE 66.25 OF 147.12
 ROYALTY OWNER PAULINE WHITEHAIR ET. AL. LEASE ACREAGE 147.12
 PROPOSED WORK : LEASE NO. _____
 DRILL CONVERT DRILL DEEPER REDRILL FRACTURE OR STIMULATE PLUG OFF OLD FORMATION PERFORATE NEW FORMATION PLUG AND ABANDON CLEAN OUT AND REPLUG OTHER
 PHYSICAL CHANGE IN WELL (SPECIFY) _____ TARGET FORMATION ALEXANDER
 ESTIMATED DEPTH 5600'

WELL OPERATOR KEY OIL COMPANY DESIGNATED AGENT JAN CHAPMAN
 ADDRESS 22 GARTON PLAZA WESTON, WV 26452 ADDRESS 22 GARTON PLAZA WESTON, WV 26452

JUL 20 2001

6-6 133

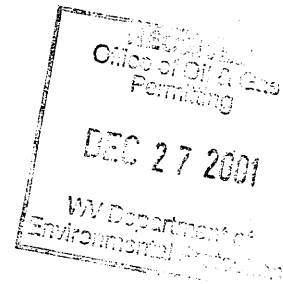
COUNTY NAME DODD PERMIT 4619

Ac P

State of West Virginia
Division of Environmental Protection
Section of Oil and Gas

Well Operators Report of Well Work

Farm name: Samuel Desist, et ux Operator Well #: Whitehair #6
Location: Elevation: 1088' Quadrangle: Oxford 7.5'
District: Southwest County: Doddridge
Latitude 9820 feet south of 39 Deg. 12 Min. 30 Sec.
Longitude 2470 feet west of 80 Deg. 50 Min. 00 Sec.



Company: Key Oil Company
22 Garton Plaza
Weston, WV 26452

Agent:	Jan Chapman	Casing	Used in Drilling	Left in Well	Cement Fill up
Inspector:	Mike Underwood				
Permit Issued:	6-14-01	8-5/8	1177	1085	220 sks
Well Work Commenced:	11-12-01	4-1/2	5263	5183	460 sks
Well Work Completed:	11-16-01				

Verbal Plugging
Permission granted on:
Rotary ___ Cable ___ Rig
Total Depth (ft) 5263'
Fresh water depth (ft) 45'
Salt water depth (ft) N/A
Is coal being mined in are (Y/N) N
Coal depths (ft) N/A

OPEN FLOW DATA

Producing formation Alexander/Elk	Pay zone depths (ft)	4990-5101
Gas: Initial open flow show mcf/d	Oil: Initial open flow	bbls/day
Final open flow 1571 mcf/d	Final open flow	bbls/day
Time of open flow between initial and final tests		Hours
Static rock pressure 1800# psig (surface pressure) after		Hours

Other producing formation Riley/Warren	Pay zone depths (ft)	3278-4781
Gas: Initial open flow * mcf/day	Oil: Initial open flow	bbls/day
Final open flow * mcf/day	Final open flow	bbls/day
Time of open flow between initial and final tests		48 Hours
Static rock pressure psig (surface pressure) after		48 Hours

* = commingled zones

For: Key Oil Company

By: *[Signature]*
Date: 12-1-01

FEB 01 2002

0000 4619

API # 47-017-04619

Stage #1	perfs	sand	
Alexander	4990-5102	600 sks	60 quality foam
Stage #2			
Benson/ 3 rd Riley	4710-4783	400 sks	60 quality foam
Stage #3			
Riley	4710-4783	400 sks	60 quality foam
Stage #4			
Upper Balltown/ Speechly Warren	3240-3724	500 sks	60 quality foam

Drillers Log

Electric Log Tops

KB/GL	0-10
Fill	10-15
Sh/RR	15-44
Sand/Sh	44-138 damp @ 46'
RR	138-165
Sd/Sh	165-248
RR	248-350
RR	350-370
RR	370-437
Sd/Sh	437-1002 Oil @ 1000'
Sand	1002-1070
Sd/Sh/RR	1070-1155
Sd/Sh	1155-1814 oil @ 1290 – odor
Little Lime	1814-1850 gas check @ 1830 – odor
Big Lime	1850-1950
Sd/Sh	1950-2240 gas check @ 2138 – odor
Sand	2240-2280
Sd/Sh	2280-3220
Warren	3220-3260
Sd/Sh	3260-3610
Balltown	3610-3750
Sd/Sh	3750-4400
Riley	4400-4435
Sd/Sh	4435-4795
Benson	4795-4840
Sd/Sh	4840-5263
TD	5263