

# CARROLL LEASE 31.5 ACRES± WELL NO. 2

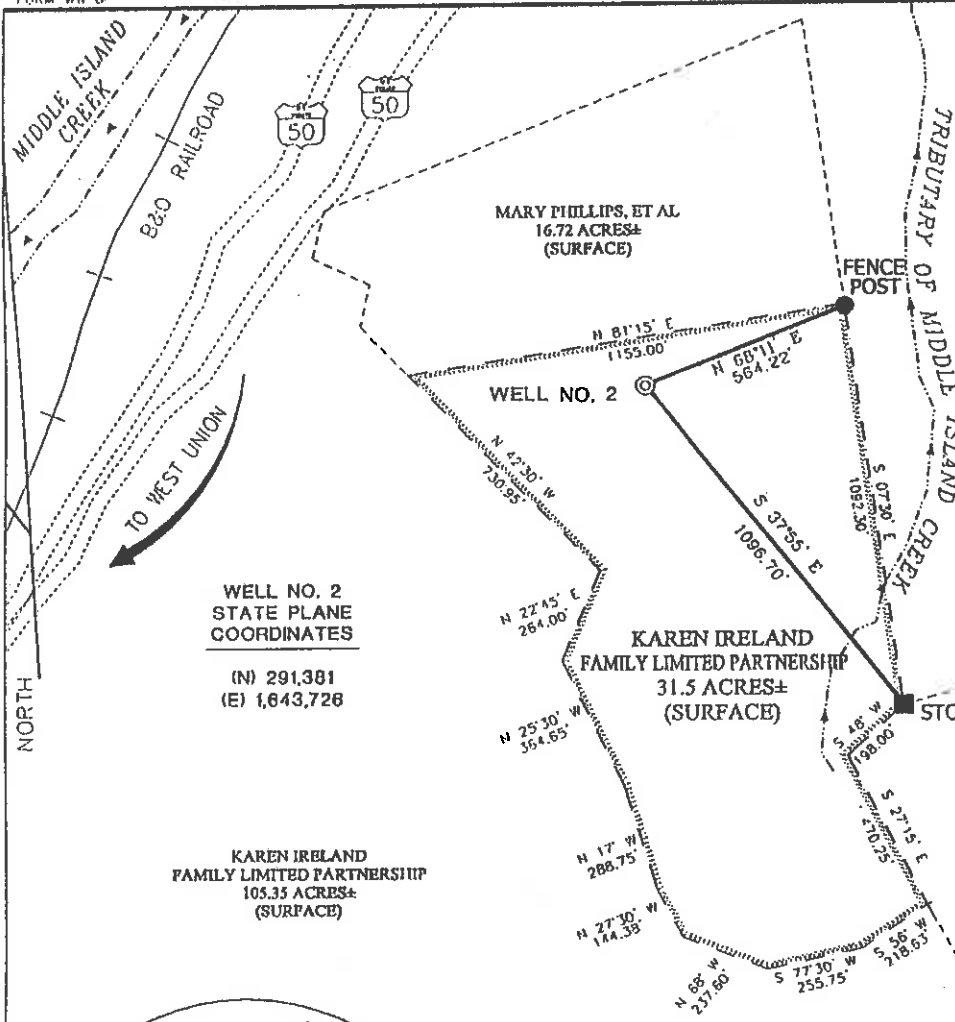
LONGITUDE 80°45'00"

014.610

LAT. 39°17'55.4"

COUNTY NAME

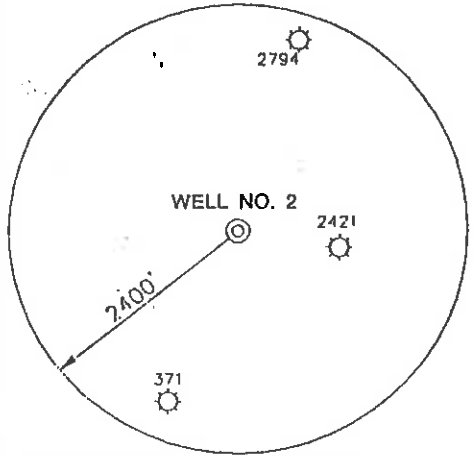
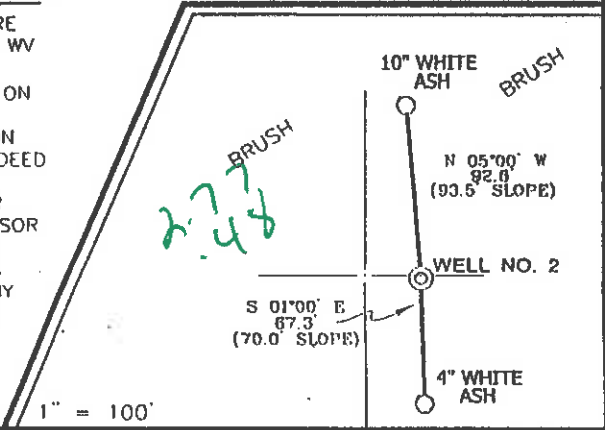
PERMIT



### NOTES ON SURVEY

1. TIES TO WELLS AND CORNERS ARE BASED ON STATE PLANE GRID NORTH WV NORTH ZONE NAD '27.
2. TIES TO REFERENCES ARE BASED ON MAGNETIC NORTH 5-24-01.
3. LEASE BOUNDARY SHOWN HEREON TAKEN FROM A DEED ON RECORD IN DEED BOOK 233 ON PAGE 636.
4. SURFACE OWNER AND ADJOINER INFORMATION TAKEN FROM THE ASSESSOR AND COUNTY CLERK RECORDS OF DODDRIDGE COUNTY IN MAY, 2001.
5. WELL LAT./LONG. ESTABLISHED BY DGPS(SUBMETER MAPPING GRADE).

### REFERENCES



I THE UNDERSIGNED, HEREBY CERTIFY THAT THIS PLAT IS CORRECT TO THE BEST OF MY KNOWLEDGE AND BELIEF AND SHOWS ALL THE INFORMATION REQUIRED BY LAW AND THE REGULATIONS ISSUED AND PRESCRIBED BY THE DEPARTMENT OF ENVIRONMENTAL PROTECTION.


P.S. *Gregory A. Smith*  
677



(+) DENOTES LOCATION OF WELL ON UNITED STATES TOPOGRAPHIC MAPS.  
DATE MAY 29, 20 01  
OPERATORS WELL NO. CARROLL NO. 2  
API WELL NO. 47 - 017 - 4639  
STATE COUNTY PERMIT

MINIMUM DEGREE OF ACCURACY 1 / 200 FILE NO. 4762P2 (109-1)  
PROVEN SOURCE OF ELEVATION TOP OF KNOB ELEVATION 1210' SCALE 1" = 500'

STATE OF WEST VIRGINIA  
DIVISION OF ENVIRONMENTAL PROTECTION  
OFFICE OF OIL AND GAS



WELL TYPE : OIL  GAS  LIQUID INJECTION  WASTE DISPOSAL  IF "GAS" PRODUCTION  STORAGE  DEEP  SHALLOW

LOCATION :  
ELEVATION 1054' WATERSHED TRIBUTARY OF MIDDLE ISLAND CREEK  
DISTRICT WEST UNION COUNTY DODDRIDGE QUADRANGLE WEST UNION 7.5'

SURFACE OWNER KAREN IRELAND FAMILY LIMITED PARTNERSHIP ACREAGE 31.5±  
ROYALTY OWNER R.S MAXWELL, et al LEASE ACREAGE 31.5±

PROPOSED WORK : LEASE NO. \_\_\_\_\_  
DRILL  CONVERT  DRILL DEEPER  REDRILL  FRACTURE OR STIMULATE  PLUG OFF OLD FORMATION  PERFORATE NEW FORMATION  PLUG AND ABANDON  CLEAN OUT AND REPLUG  OTHER \_\_\_\_\_  
PHYSICAL CHANGE IN WELL (SPECIFY) \_\_\_\_\_ TARGET FORMATION GORDON  
ESTIMATED DEPTH 3000'

WELL OPERATOR ALPHA GAS CORP. DESIGNATED AGENT JOHN SPIKER  
ADDRESS P.O. BOX 68 REYNOLDSVILLE, WV 26422 ADDRESS RT. 1 BOX 161-S JANE LEW, WV 26378

6-6 99

SEP 14 2001

0000

4639

State of West Virginia  
 Division of Environmental Protection  
 Section of Oil and Gas

Reviewed APV

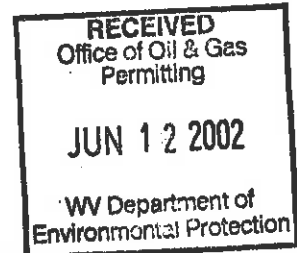
Well Operators Report of Well Work

Farm name: Carroll #2 Operator Well #: Carroll #2  
 Location: Elevation: 1,054' Quadrangle: West Union 7.5'  
 District: West Union County: Doddridge  
 Latitude 14,610 feet south of 39 Deg. 20 Min. 00 Sec.  
 Longitude 2,550 feet west of 80 Deg. 45 Min. 00 Sec.

Company: Alpha Gas Corp.  
 P.O. Box 68  
 Reynoldsville WV 26422

Agent: John Spiker Casing Used in Drilling Left in Well Cement Fill up

Inspector: Mike Underwood  
 Permit Issued: 09-10-01 11 3/4  
 Well Work Commenced: 05-11-02  
 Well Work Completed: 05-23-02 8 5/8 1032 1032 245 sks  
 Verbal Plugging  
 Permission granted on: 4 1/2 2815 2762 265 sks  
 Rotary  Cable  Rig  
 Total Depth (ft) 2815'  
 Fresh water depth (ft) N/A  
 Salt water depth (ft) N/A  
 Is coal being mined in are (Y/N) N  
 Coal depths (ft) N/A



OPEN FLOW DATA

Producing formation Big Injun Pay zone depths (ft) 1910-1988  
 Gas: Initial open flow 411 mcf/d Oil: Initial open flow bbls/day  
 Final open flow 500 mcf/d Final open flow bbls/day  
 Time of open flow between initial and final tests 48 Hours  
 Static rock pressure 340# psig (surface pressure) after 48 Hours

Other producing formation Gordon Pay zone depths (ft) 2634-2640  
 Gas: Initial open flow \* mcf/day Oil: Initial open flow bbls/day  
 Final open flow \* mcf/day Final open flow bbls/day  
 Time of open flow between initial and final tests 48 Hours  
 Static rock pressure psig (surface pressure) after 48 Hours  
 \* = commingled zones

For: Alpha Gas Corporation  
 By: [Signature]  
 Date: 05-30-02

JUN 14 2002

D000 4639

Carroll #2  
05-27-02

Stimulation

Stage #1	perfs	sand	avg rate	isip
Gordon	2768-2774	200 sks	24 bpm	2300#
Stage #2	1910-1984	500 sks	30 bpm	1900#

Drillers Log

Fill	0	15
Sh	15	135
Sd	135	145
Sd/Sh	145	1200
Sd	1200	1215
Sh	1215	1730
Sd	1730	1765
Sh	1765	1800
Lime	1800	1815
Sh	1815	1850
BL	1850	1910
Sd	1910	2040
Sh	2040	2620
Sd	2620	2645
Sh	2646	2815
Td	2815	

Electric Log Tops

Big Lime	1851
Keener	1908
Big Injun	1930
Berea	2399
Gordon	2620