

LONG. 80°15'29.7" LATITUDE 39°20'00"
 2.390'
 22.7 OF 54.2 ACRES ±
 WELL NO. 1
 CARROLL LEASE

C. LONGACRE ET AL
 88.37 ACRES ±
 (SURFACE)

LEONCE LABEL
 86.09 ACRES ±
 (SURFACE)

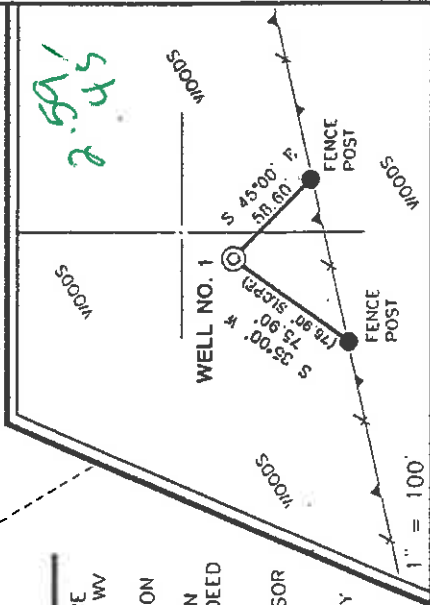
KAREN IRELAND
 FAMILY LIMITED PARTNERSHIP
 31.5 ACRES ±
 (SURFACE)

MARY PHILLIPS, ET AL
 16.72 ACRES ±
 (SURFACE)

KAREN IRELAND
 FAMILY LIMITED PARTNERSHIP
 105.35 ACRES ±
 (SURFACE)

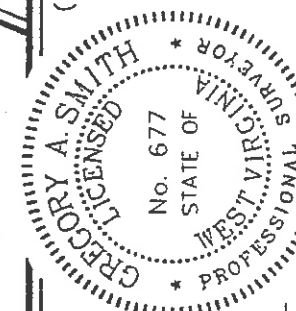
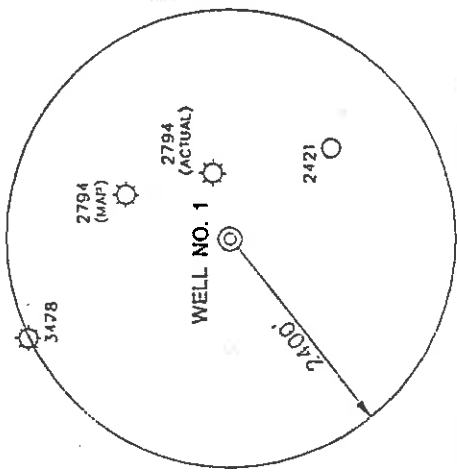
WELL NO. 1
 STATE PLANE
 COORDINATES
 (N) 292,330
 (E) 1,943,911

REFERENCES



NOTES ON SURVEY

1. TIES TO WELLS AND CORNERS ARE BASED ON STATE PLANE GRID NORTH WW NORTH ZONE NAD '27.
2. TIES TO REFERENCES ARE BASED ON MAGNETIC NORTH 5-24-01.
3. LEASE BOUNDARY SHOWN HEREON TAKEN FROM A DEED ON RECORD IN DEED BOOK 233 ON PAGE 636.
4. SURFACE OWNER AND ADJOINER INFORMATION TAKEN FROM THE ASSESSOR AND COUNTY CLERK RECORDS OF DODDRIDGE COUNTY IN MAY, 2001.
5. WELL LAT./LONG. ESTABLISHED BY DGPS(SUBMETER MAPPING GRADE).



I THE UNDERSIGNED, HEREBY CERTIFY THAT THIS PLAT IS CORRECT TO THE BEST OF MY KNOWLEDGE AND BELIEF AND SHOWS ALL THE INFORMATION REQUIRED BY LAW AND THE REGULATIONS ISSUED AND PRESCRIBED BY THE DEPARTMENT OF ENVIRONMENTAL PROTECTION.

P.S. *Gregory A. Smith*
 677

(+) DENOTES LOCATION OF WELL ON UNITED STATES TOPOGRAPHIC MAPS.
 DATE MAY 31 20 01
 OPERATORS WELL NO. CARROLL NO. 1
 API WELL NO. 47-017-4640
 STATE COUNTY PERMIT

MINIMUM DEGREE OF ACCURACY 1 / 200 FILE NO. 4762P1 (109-1)
 PROVEN SOURCE SCALE 1" = 500'
 OF ELEVATION TOP OF KNOB ELEVATION 1210'

STATE OF WEST VIRGINIA
 DIVISION OF ENVIRONMENTAL PROTECTION
 OFFICE OF OIL AND GAS

WELL TYPE : OIL GAS INJECTION WASTE IF "GAS" PRODUCTION STORAGE DEEP SHALLOW

LOCATION : ELEVATION 1027' WATERSHED MIDDLE ISLAND CREEK

DISTRICT WEST UNION COUNTY DODDRIDGE QUADRANGLE WEST UNION 7.5'
 SURFACE OWNER KAREN IRELAND FAMILY LIMITED PARTNERSHIP ACREAGE 22.7 ±
 ROYALTY OWNER R.S. MAXWELL, et al LEASE ACREAGE 22.7 OF 54.2 ±
 PROPOSED WORK : LEASE NO. _____

DRILL CONVERT DRILL DEEPER REDRILL FRACTURE OR STIMULATE PLUG-OFF OLD FORMATION PERFORATE NEW FORMATION PLUG AND ABANDON CLEAN OUT AND REPLUG OTHER _____
 PHYSICAL CHANGE IN WELL (SPECIFY) _____ TARGET FORMATION GORDON
 ESTIMATED DEPTH 3000'

WELL OPERATOR ALPHA GAS CORP DESIGNATED AGENT JOHN SPIKER
 ADDRESS P.O. BOX 68 REYNOLDSVILLE, WV 26422 ADDRESS RT. 1 BOX 161-S JANE LEWIS WV 26378

COUNTY NAME DODD PERMIT 4640

LONGITUDE 80°45'00" LAT. 39°17'44.8"

AM/9

04-15-03
API# 47-017-04640

State of West Virginia
Division of Environmental Protection
Section of Oil and Gas

Well Operators Report of Well Work

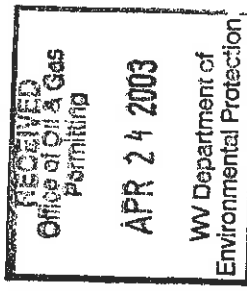
Farm name: Ireland Operator Well #: Carroll #1
Location: Elevation: 1,027' Quadrangle: West Union 7.5'
District: West Union County: Doddridge
Latitude 15,650 feet south of 39 Deg. 20 Min. 00 Sec.
Longitude 2,390 feet west of 80 Deg. 45 Min. 00 Sec.

Company: Alpha Gas Corp.
P.O. Box 68
Reynoldsville WV 26422

Agent: John Spiker Casing Used in Drilling Left in Well Cement Fill up

Inspector: Mike Underwood
Permit Issued: 09-10-01
Well Work Commenced: 03-20-02
Well Work Completed: 03-24-03
Verbal Plugging
Permission granted on:
Rotary Cable _____ Rig
Total Depth (ft) 2823'
Fresh water depth (ft) N/A
Salt water depth (ft) N/A
Is coal being mined in are (Y/N) N
Coal depths (ft) N/A

1031 245 sks
2823 235 sks



OPEN FLOW DATA

| | | | |
|---|------------------------------|----------------------|-----------|
| Producing formation | Big Injun | Pay zone depths (ft) | 1880-2004 |
| Gas: Initial open flow | small mcf/d | Initial open flow | bbbls/day |
| Final open flow | 500 mcf/d | Final open flow | bbbls/day |
| Time of open flow between initial and final tests | | Hours | 48 |
| Static rock pressure | 340# psig (surface pressure) | after | 48 Hours |
| Other producing formation | Gordon | Pay zone depths (ft) | 2590-2615 |
| Gas: Initial open flow | * mcf/day | Initial open flow | bbbls/day |
| Final open flow | * mcf/day | Final open flow | bbbls/day |
| Time of open flow between initial and final tests | | Hours | 48 |
| Static rock pressure | psig (surface pressure) | after | 48 Hours |

* = commingled zones

0000 4640

For: Alpha Gas Corporation
By: *[Signature]*
Date: 04-15-03

JUN 15 2003

Carroll #1
04-07-03

Stimulation

| Stage # | perfs | sand | avg rate | isip |
|-----------|-----------|---------|----------|-------|
| Gordon | 2602-2656 | 200 sks | 32 bpm | 2250# |
| Big Injun | 1978-2000 | 250 sks | 30 bpm | 1900# |
| Big Injun | 1876-1946 | 350 sks | 32 bpm | 1856# |

Drillers Log

| | | |
|-------|------|------|
| Fill | 0 | 15 |
| Sh | 15 | 135 |
| Sd | 135 | 145 |
| Sd/Sh | 145 | 1200 |
| Sd | 1200 | 1215 |
| Sh | 1215 | 1730 |
| Sd | 1730 | 1765 |
| Sh | 1765 | 1800 |
| Lime | 1800 | 1815 |
| Sh | 1815 | 1850 |
| BL | 1820 | 1875 |
| Sd | 1875 | 2010 |
| Sh | 2010 | 2560 |
| Sd | 2560 | 2625 |
| Sh | 2625 | 2823 |
| Td | 2823 | |

Electric Log Tops

| | |
|-----------|------|
| Big Lime | 1820 |
| Keener | 1876 |
| Big Injun | 1883 |
| Berea | 2370 |
| Gordon | 2556 |