

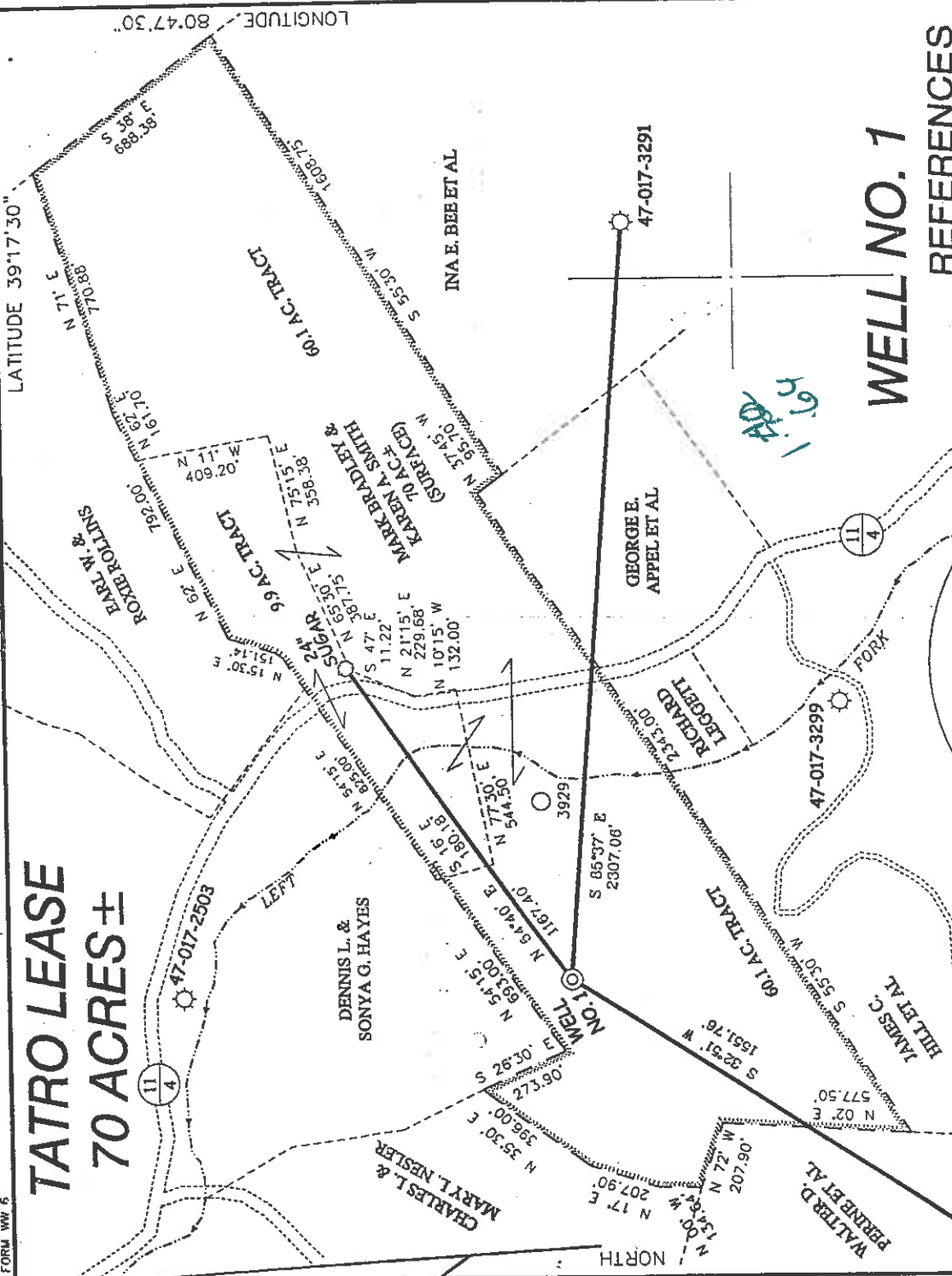
TATRO LEASE 70 ACRES ±

LONG. 80°48'13.7" →

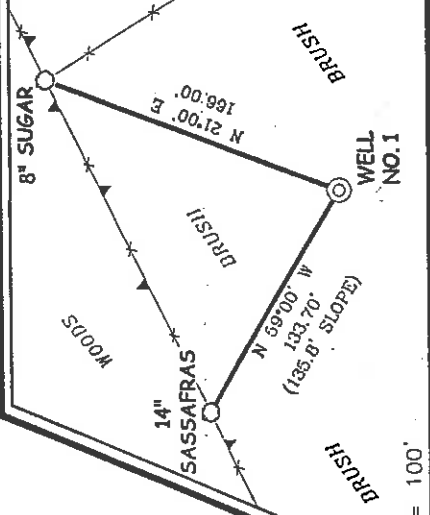
LATITUDE 39°17'30" →

LONGITUDE 80°47'30" →

LAT. 39°16'01.3" →



WELL NO. 1 REFERENCES



NOTES ON SURVEY

1. TIES TO WELLS AND CORNERS ARE BASED ON STATE PLANE GRID NORTH WV NORTH ZONE NAD '27.
2. TIES TO REFERENCES ARE BASED ON MAGNETIC NORTH 09/20/01.
3. LEASE BOUNDARY SHOWN HEREON TAKEN FROM DEED BOOK 237 PAGE 653.
4. SURFACE OWNER AND ADJOINER INFORMATION TAKEN FROM THE ASSESSOR AND COUNTY CLERK RECORDS OF DODDRIIDGE COUNTY IN SEPTEMBER, 2001.
5. WELL LAT./LONG. ESTABLISHED BY DGPS(SUBMETER MAPPING GRADE).



I THE UNDERSIGNED, HEREBY CERTIFY THAT THIS PLAT IS CORRECT TO THE BEST OF MY KNOWLEDGE AND BELIEF AND SHOWS ALL THE INFORMATION REQUIRED BY LAW AND THE REGULATIONS ISSUED AND PRESCRIBED BY THE DIVISION OF ENVIRONMENTAL PROTECTION.

P.S. *Gregory A. Smith*
677

(+) DENOTES LOCATION OF WELL ON UNITED STATES TOPOGRAPHIC MAPS.
DATE OCTOBER 1, 20 01
OPERATORS WELL NO. TATRO NO. 1
API WELL NO. 47 - 017-04655
STATE COUNTY PERMIT



STATE OF WEST VIRGINIA
DIVISION OF ENVIRONMENTAL PROTECTION
OFFICE OF OIL AND GAS

MINIMUM DEGREE OF ACCURACY 1 / 200 FILE NO. 4879P1 (114-6)
SCALE 1" = 500'
PROVEN SOURCE OF ELEVATION JUNCTION OF ROADS ELEVATION 816'

WELL TYPE : OIL GAS INJECTION WASTE LIQUID IF "GAS" PRODUCTION STORAGE DEEP SHALLOW

LOCATION : ELEVATION 1177' WATERSHED LEFT FORK OF ARNOLDS CREEK
DISTRICT WEST UNION COUNTY DODDRIIDGE QUADRANGLE WEST UNION 7.5'
SURFACE OWNER MARK BRADLEY SMITH AND KAREN A. SMITH ACREAGE 60.1 OF 70
ROYALTY OWNER W. TATRO HEIRS LEASE ACREAGE 70 LEASE NO. _____
PROPOSED WORK :
DRILL CONVERT DRILL DEEPER REDRILL FRACTURE OR STIMULATE PLUG OFF OLD FORMATION PERFORATE NEW FORMATION PLUG AND ABANDON CLEAN OUT AND REPLUG OTHER _____
PHYSICAL CHANGE IN WELL (SPECIFY) _____ TARGET FORMATION ALEXANDER ESTIMATED DEPTH 5600'

WELL OPERATOR KEY OIL COMPANY DESIGNATED AGENT JAN CHAPMAN
ADDRESS 22 GARTON PLAZA WESTON, WV 26452 ADDRESS 22 GARTON PLAZA WESTON, WV 26452

6-6 135

API # 47-017-04655
Tatro #1

Stage #1	perfs	sand	60 quality foam
Alexander	5263-5325	600 sks	
Stage #2			
Benson/Riley	4944-5008	350 sks	60 quality foam
Stage #3			
Riley/ Balltown	4172-4586	300 sks	60 quality foam
Stage #4			
Balltown	3407-3974	500 sks	60 quality foam

Drillers Log

Electric Log Tops

KB/GL	0-10	
Clay	10-14	
RR	14-20	
SD/Sh	20-200	water @ 80' ½" stream
RR/Sh	200-215	
Sd/Sh	215-420	
Shale	420-430	
Sd/Sh	430-635	
RR/Shale	635-701	
Sand	701-715	
Sd/Sh	715-1090	
Shale	1090-1104	
Sd/Sh	1104-1302	
Sand	1302-1410	
Sd/Sh	1410-2020	gas check @ 1505' odor
L. Lime	2020-2060	
B. Lime	2060-2194	
B. Injun	2914-2264	gas check @ 2257' oil odor
Sd/Sh	2264-3450	gas check @ 3409' oil odor
Warren	3450-3490	
Sd/Sh	3490-3990	
Balltown	3990-4140	gas check @ 4025' oil odor; gas check @ 4013' oil odor
Sd/Sh	4140-4640	
Riley	4640-4680	
Sd/Sh	4680-5030	
Benson	5030-5050	
Sd/Sh	5050-5290	
Alexander	5290-5360	
Sd/Sh	5360-5627	
Td	5627	

State of West Virginia
 Division of Environmental Protection
 Section of Oil and Gas

February 24, 2002
 API# 47-017-04655

*See morning Div
 books*

ARZ

Well Operators Report of Well Work

Farm name: Key Oil Company Operator Well #: Tatro #1
 Location: Elevation: 1177' Quadrangle: West Union 7.5'

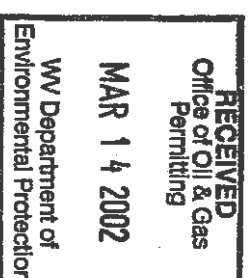
District: West Union County Doddridge
 Latitude 3,400 feet south of 39 Deg. 17 Min. 30 Sec.
 Longitude 8,960 feet west of 80 Deg. 47 Min. 30 Sec.

Company: Key Oil Company
 22 Garton Plaza
 Weston, WV 26452

Agent: Jan Chapman Casing Used in Left in Cement
 Drilling Well Fill up

Inspector: Mike Underwood
 Permit Issued: 12-27-01 8-5/8 1118 1118 240 sks
 Well Work Commenced: 02-03-02
 Well Work Completed: 02-13-02 4-1/2 5417 550 sks

Verbal Plugging
 Permission granted on:
 Rotary X Cable _____ Rig
 Total Depth (ft) 5627
 Fresh water depth (ft) 80'
 Salt water depth (ft) N/A
 Is coal being mined in are (Y/N) N
 Coal depths (ft)



OPEN FLOW DATA

Producing formation: Alexander Pay zone depths (ft) 5263-5324
 Gas: Initial open flow odor mcf/d Initial open flow bbls/day
 Final open flow 1532 mcf/d Final open flow bbls/day
 Time of open flow between initial and final tests 48 Hours
 Static rock pressure 1775 psig (surface pressure) after 48 Hours

Other producing formation: Balltown/Riley/Warren Pay zone depths (ft) 3407-5007
 Gas: Initial open flow * mcf/day Oil Initial open flow bbls/day
 Final open flow * mcf/day Final open flow bbls/day
 Time of open flow between initial and final tests 48 Hours
 Static rock pressure * psig (surface pressure) after 48 Hours
 *==commingled zones

For: Key Oil Company
 BY: *[Signature]*
 Date: 02-24-02

MAR 22 2002

0000 4655