

# J.E. McCONNELL HEIRS LEASE

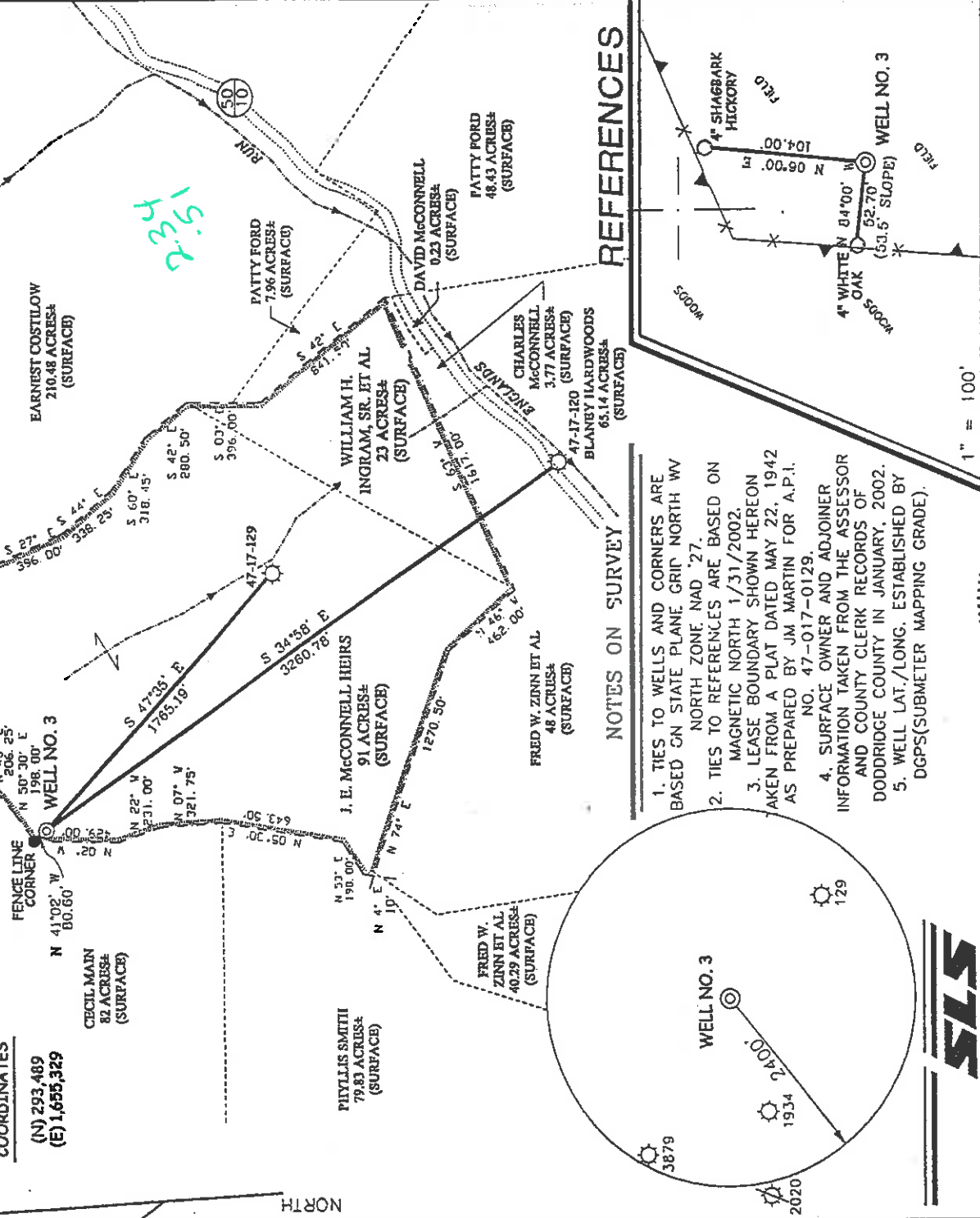
## 114 ACRES ±

### WELL NO. 3

WELL NO. 3  
STATE PLANE  
COORDINATES

(N) 293,489  
(E) 1,655,329

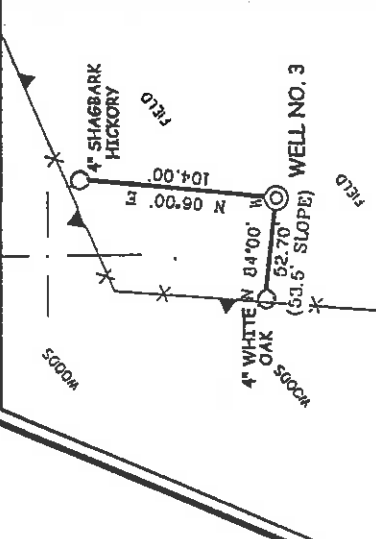
LONG. 80°43'04.6"    LATITUDE 39°20'00"  
12.350    4.710



#### NOTES ON SURVEY

1. TIES TO WELLS AND CORNERS ARE BASED ON STATE PLANE GRID NORTH WV NORTH ZONE, NAD '27. MAGNETIC NORTH 1/31/2002.
2. TIES TO REFERENCES ARE BASED ON MAGNETIC NORTH 1/31/2002.
3. LEASE BOUNDARY SHOWN HEREON TAKEN FROM A PLAT DATED MAY 22, 1942 AS PREPARED BY JM MARTIN FOR A.P.I. NO. 47-017-0129.
4. SURFACE OWNER AND ADJOINER INFORMATION TAKEN FROM THE ASSESSOR AND COUNTY CLERK RECORDS OF DODDRIDGE COUNTY IN JANUARY, 2002.
5. WELL LAT./LONG. ESTABLISHED BY DGPS(SUBMETER MAPPING GRADE).

#### REFERENCES



I THE UNDERSIGNED, HEREBY CERTIFY THAT THIS PLAT IS CORRECT TO THE BEST OF MY KNOWLEDGE AND BELIEF AND SHOWS ALL THE INFORMATION REQUIRED BY LAW AND THE REGULATIONS ISSUED AND PRESCRIBED BY THE DEPARTMENT OF ENVIRONMENTAL PROTECTION.

P.S. *Gregory A. Smith*  
677

(+) DENOTES LOCATION OF WELL ON UNITED STATES TOPOGRAPHIC MAPS.  
DATE FEBRUARY 9, 2002  
OPERATORS WELL NO. J. E. McCONNELL HEIRS NO. 3  
API WELL NO. 47-017-04668  
STATE COUNTY PERMIT

MINIMUM DEGREE OF ACCURACY 1 / 200 FILE NO. 4962P3(114-54)  
PROVEN SOURCE TOP OF KNOB 1322' SCALE 1" = 800'  
STATE OF WEST VIRGINIA DIVISION OF ENVIRONMENTAL PROTECTION OFFICE OF OIL AND GAS

WELL TYPE : OIL  GAS  INJECTION  WASTE  LIQUID  DISPOSAL  IF "GAS" PRODUCTION  STORAGE  DEEP  SHALLOW   
LOCATION : ELEVATION 1243' WATERSHED TRIBUTARY OF ENGLANDS RUN  
DISTRICT WEST UNION COUNTY DODDRIDGE QUADRANGLE SMITHBURG 7.5'  
SURFACE OWNER J. E. McCONNELL HEIRS ACREAGE 91  
ROYALTY OWNER J. E. McCONNELL HEIRS LEASE ACREAGE 114 LEASE NO. \_\_\_\_\_  
PROPOSED WORK :  
DRILL  CONVERT  DRILL DEEPER  REDRILL  FRACTURE OR STIMULATE  PLUG OFF OLD FORMATION  PERFORATE NEW FORMATION  PLUG AND ABANDON  CLEAN OUT AND REPLUG  OTHER \_\_\_\_\_  
PHYSICAL CHANGE IN WELL (SPECIFY) \_\_\_\_\_ TARGET FORMATION GORDON ESTIMATED DEPTH 2,900'

WELL OPERATOR KEY OIL COMPANY DESIGNATED AGENT JAN CHAPMAN  
ADDRESS 22 GARTON PLAZA WESTON, WV 26452 ADDRESS 22 GARTON PLAZA WESTON, WV 26452

6-6 99 MAY 3 - 2002

State of West Virginia  
Division of Environmental Protection  
Section of Oil and Gas

*AB*

Well Operator's Report of Well Work

Farm Name: J.E. MCCONNELL HEIRS

Operator Well No. : J.E. MCCONELL #3

LOCATION: Elevation: 1243'

Quadrangle: SMITHBURG

District: WEST UNION  
Latitude: 12350 Feet South of 39 Deg. 20 Min. 00 Sec.  
Longitude: 2710 Feet West of 80 Deg. 42 Min. 30 Sec.

County: DODDRIDGE

Company: KEY OIL COMPANY  
22 GARTON PLAZA  
WESTON, WV 26452-0000

Agent: JAN E. CHAPMAN

Inspector: MIKE UNDERWOOD  
Permit Issued: 05/03/02  
Well Work Commenced: 06/09/02  
Well Work Completed: 06/19/02

Verbal Plugging  
Permission granted on: \_\_\_\_\_ Rig  
Rotary X Cable \_\_\_\_\_  
Total Depth ( feet ) 3198'  
Fresh water depths ( ft ) 170'  
Salt water depths ( ft ) None

Is coal being mined in area ( Y / N ) ? N  
Coal Depths ( ft ) : NONE

OPEN FLOW DATA

Casing & Tubing Size	Used in Drilling	Left in Well	Cement Fill Up Cu. Ft.
8 5/8"	1233'	1233'	280 sks To Surface
4 1/2"	2824'	2824'	225 sks
2 3/8"		2716'	

RECEIVED  
Office of Oil & Gas  
Permitting  
JUL 05 2002  
WV Department of  
Environmental Protection

Keener Injun Gordon

Producing formation \_\_\_\_\_  
Gas: Initial open flow no show MCF / d Oil: Initial open flow 0 Bbl / d  
Final open flow 641 MCF / d Oil: Final open flow show Bbl / d  
Time of open flow between initial and final tests \_\_\_\_\_ Hours  
Static rock pressure 275 psig ( surface pressure ) after 48 - \_\_\_\_\_ Hours

2076' - 2088'  
2124' - 2161'  
2700' - 2756'

Second producing formation Commingled

Gas: Initial open flow \_\_\_\_\_ MCF / d Pay zone depth ( ft ) \_\_\_\_\_  
Final open flow \_\_\_\_\_ MCF / d Oil: Initial open flow \_\_\_\_\_ Bbl / d  
Time of open flow between initial and final tests \_\_\_\_\_ Hours  
Static rock pressure \_\_\_\_\_ psig ( surface pressure ) after \_\_\_\_\_ Hours

Pay zone depth ( ft ) \_\_\_\_\_

Oil: Initial open flow \_\_\_\_\_ Bbl / d  
Oil: Final open flow \_\_\_\_\_ Bbl / d  
Hours  
Hours

NOTE: ON BACK OF THIS FORM PUT THE FOLLOWING: 1). DETAILS OF PERFORATED INTERVALS, FRACTURING OR STIMULATING, PHYSICAL CHANGE, ETC. 2). THE WELL LOG WHICH IS A SYSTEMATIC DETAILED GEOLOGICAL RECORD OF ALL FORMATIONS, INCLUDING COAL ENCOUNTERED BY THE WELLBORE.

For: KEY OIL COMPANY

By: [Signature]  
Date: July 1, 2002

PRESIDENT

0000 4668

603 8302

J.E. McConnell #3 (47-017 -4668)  
Two Stage Foam Frac - B.J. Services

1<sup>st</sup> Stage: Gordon ( 12 holes ) ( 2736.50' to 2752.25' ) 60 Quality Foam. 500 gal. 15% HCL.  
40,000# 20/40 sand, 465,000 SCF N2,  
585 bbls foam.

2<sup>nd</sup> Stage: Big Injun ( 14 holes ) 2133' to 2148.50' ) 60 Quality Foam. 1,000 gal 15% HCL.  
Keener ( 5 holes ) ( 2097.50' to 2098' ) 60,000# 20/40 sand, 632,000 SCF N2,  
843 bbls foam.

WELL LOG

KB-GL	0	10	
Clay	10	15	
Sand	15	23	
Sand & Shale & Red Rock	23	435	
Shale & Sand	435	619	Damp @ 170'
Sand	619	624	
Sand & Shale	624	801	
Sand & Shale & Red Rock	801	1002	
Sand & Shale	1002	1457	
Sand & Shale	1457	1961	
Little Lime	1961	1993	
Blue Monday	1993	2010	
Big Lime	2010	2076	<u>Gas Checks</u>
Keener	2076	2088	1563' - Oil Odor
Shale & Lime	2088	2124	1948' - Oil Odor
Big Injun	2124	2161	2064' - Oil Odor
Sand & Shale	2161	2297	2696' - Oil Odor
Weir	2297	2406	
Sand & Shale	2406	2508	
Berea	2508	2528	
Sand & Shale	2528	2700	
Gordon	2700	2756	
Shale	2756	3026	
Fifth Sand	3026	3034	
Shale	3034	3198	
TD	3198		