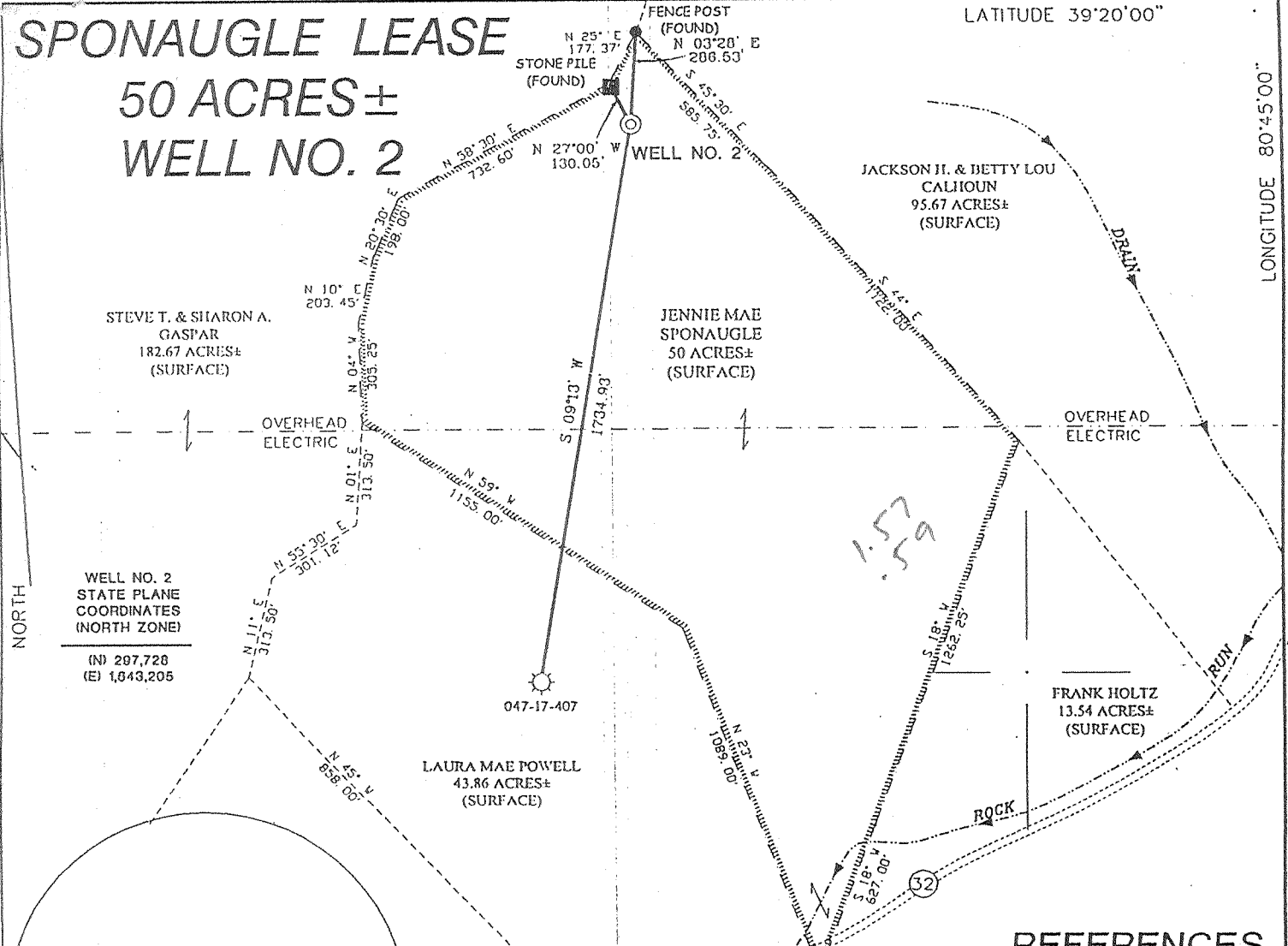


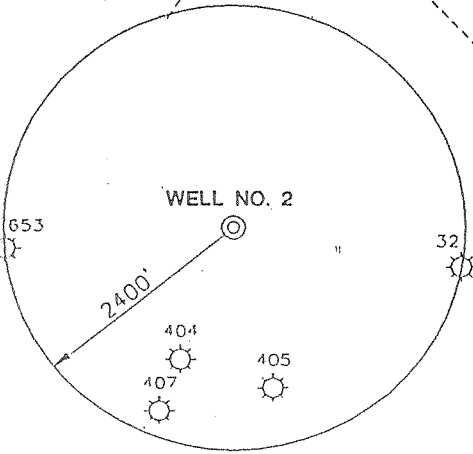
# SPONAUGLE LEASE

## 50 ACRES± WELL NO. 2



LONGITUDE 80°45'00"  
8.28  
LAT. 39°18'38.0"

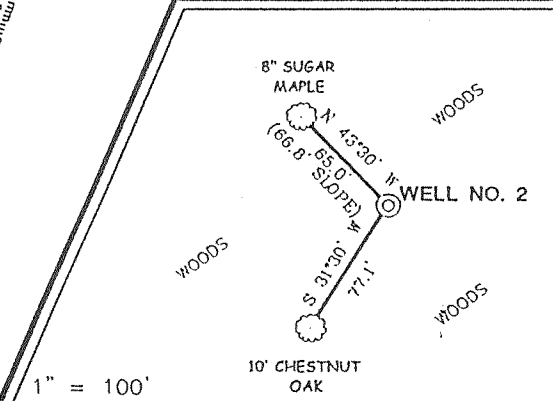
WELL NO. 2  
STATE PLANE  
COORDINATES  
(NORTH ZONE)  
(N) 287,728  
(E) 1,643,205



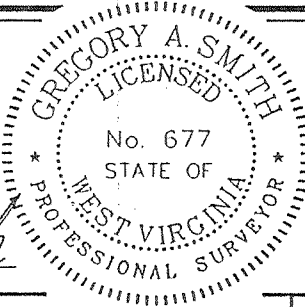
### NOTES ON SURVEY

1. TIES TO WELLS AND CORNERS ARE BASED ON STATE PLANE GRID NORTH WV NORTH ZONE NAD '27.
2. TIES TO REFERENCES ARE BASED ON MAGNETIC NORTH 8/9/02.
3. LEASE BOUNDARY SHOWN HEREON TAKEN FROM A TITLE OPINION AS PREPARED BY GARY MORRIS DATED JULY 29, 2002.
4. SURFACE OWNER AND ADJOINER INFORMATION TAKEN FROM THE ASSESSOR AND COUNTY CLERK RECORDS OF DODDRIDGE COUNTY IN AUGUST, 2002.
5. WELL LAT./LONG. ESTABLISHED BY DGPS(SUBMETER MAPPING GRADE).

### REFERENCES



I THE UNDERSIGNED, HEREBY CERTIFY THAT THIS PLAT IS CORRECT TO THE BEST OF MY KNOWLEDGE AND BELIEF AND SHOWS ALL THE INFORMATION REQUIRED BY LAW AND THE REGULATIONS ISSUED AND PRESCRIBED BY THE DIVISION OF ENVIRONMENTAL PROTECTION.



(+) DENOTES LOCATION OF WELL ON UNITED STATES TOPOGRAPHIC MAPS.  
 DATE AUGUST 10, 20 02  
 OPERATORS WELL NO. SPONAUGLE NO. 2  
 API WELL NO. 47-17-4702  
 STATE COUNTY PERMIT

MINIMUM DEGREE OF ACCURACY 1 / 200 FILE NO. 5092P2(126-34)  
 PROVEN SOURCE OF ELEVATION BENCH MARK ELEV. 833' SCALE 1" = 500'

STATE OF WEST VIRGINIA  
 DIVISION OF ENVIRONMENTAL PROTECTION  
 OFFICE OF OIL AND GAS



WELL TYPE : OIL  GAS  LIQUID INJECTION  WASTE DISPOSAL  IF "GAS" PRODUCTION  STORAGE  DEEP  SHALLOW

LOCATION :  
 ELEVATION 1232' WATERSHED ROCK RUN OF MIDDLE ISLAND CREEK  
 DISTRICT WEST UNION COUNTY DODDRIDGE QUADRANGLE WEST UNION 7.5'

SURFACE OWNER JENNIE MAE SPONAUGLE ET. AL. ACREAGE 50±  
 ROYALTY OWNER JENNIE MAE SPONAUGLE ET. AL. LEASE ACREAGE 50±

PROPOSED WORK :  
 LEASE NO. \_\_\_\_\_  
 DRILL  CONVERT  DRILL DEEPER  REDRILL  FRACTURE OR STIMULATE  PLUG OFF OLD FORMATION  PERFORATE NEW FORMATION  PLUG AND ABANDON  CLEAN OUT AND REPLUG  OTHER \_\_\_\_\_  
 PHYSICAL CHANGE IN WELL (SPECIFY) \_\_\_\_\_ TARGET FORMATION ALEXANDER  
 ESTIMATED DEPTH 5600

WELL OPERATOR KEY OIL COMPANY DESIGNATED AGENT JAN CHAPMAN  
 ADDRESS 22 GARTON PLAZA WESTON, WV 26452 ADDRESS 22 GARTON PLAZA WESTON, WV 26452

COUNTY NAME Dodd  
PERMIT 4702

6-6 (099)

State of West Virginia  
Division of Environmental Protection  
Section of Oil and Gas

*Handwritten signature*

Well Operator's Report of Well Work

Farm Name: JENNIE MAY SPONAUGLE, ET AL.

Operator Well No. : SPONAUGLE #2

LOCATION: Elevation: 1232.00

Quadrangle: WEST UNION

District: WEST UNION

County: DODDRIDGE

Latitude: 8,280 Feet South of 39 Deg. 20 Min. 00 Sec.

Longitude: 3,130 Feet West of 80 Deg. 45 Min. 00 Sec.

Company: KEY OIL COMPANY  
22 GARTON PLAZA  
WESTON, WV 26452-0000

Agent: JAN E. CHAPMAN

Inspector: MIKE UNDERWOOD  
Permit Issued: 09/09/02  
Well Work Commenced: 10/01/02  
Well Work Completed: 10/09/02

Verbal Plugging  
Permission granted on: \_\_\_\_\_  
Rotary X Cable \_\_\_\_\_ Rig  
Total Depth ( feet ) 5590'  
Fresh water depths ( ft ) 434'  
Salt water depths ( ft ) NONE

Is coal being mined in area ( Y / N )? N  
Coal Depths ( ft ): 317' (5')

Casing & Tubing Size	Used in Drilling	Left In Well	Cement Fill Up Cu. Ft.
8 5/8"	1239'	1239'	280 sks To Surface
4 1/2"	5551'	5551'	460 sks

Office of Oil and Gas Planning  
DEC 04 2002  
WV Department of Environmental Protection

OPEN FLOW DATA

Warren 3510' - 3562'  
 Speechley 3575' - 3670'  
 Rileys 4699' - 5124'  
 Benson 5164' - 5178'  
 Producing formation Alexander Pay zone depth ( ft ) 5410' - 5507'  
 Gas: Initial open flow Odor MCF / d Oil: Initial open flow 0 Bbl / d  
 Final open flow 1,517 MCF / d Oil: Final open flow show Bbl / d  
 Time of open flow between initial and final tests N/A Hours  
 Static rock pressure 1780 psig ( surface pressure ) after 96 Hours

Second producing formation Commingled Pay zone depth ( ft ) \_\_\_\_\_  
 Gas: Initial open flow \_\_\_\_\_ MCF / d Oil: Initial open flow \_\_\_\_\_ Bbl / d  
 Final open flow \_\_\_\_\_ MCF / d Oil: Final open flow \_\_\_\_\_ Bbl / d  
 Time of open flow between initial and final tests \_\_\_\_\_ Hours  
 Static rock pressure \_\_\_\_\_ psig ( surface pressure ) after \_\_\_\_\_ Hours

NOTE: ON BACK OF THIS FORM PUT THE FOLLOWING: 1). DETAILS OF PERFORATED INTERVALS, FRACTURING OR STIMULATING, PHYSICAL CHANGE, ETC. 2). THE WELL LOG WHICH IS A SYSTEMATIC DETAILED GEOLOGICAL RECORD OF ALL FORMATIONS, INCLUDING COAL ENCOUNTERED BY THE WELLBORE.

For: KEY OIL COMPANY

By: *[Signature]*  
Date: November 25, 2002

PRESIDENT  
JAN 17 2003

0000 4702

Sponaugle #2 (47-017 - 4702)  
Four Stage Foam Frac – BJ Services

1<sup>st</sup> Stage: Alexander ( 14 holes ) ( 5433.75' to 5494.25' ) 60 Quality Foam. 500 gal. 15% HCL.  
60,000# 20/40 sand, 550,000 SCF N2,  
819 bbls foam.

2<sup>nd</sup> Stage: Benson ( 10 holes ) ( 5172.75' to 5178.50' ) 60 Quality Foam. 750 gal 15% HCL.  
Third Riley ( 3 holes ) ( 5087.50' to 5088' ) 30,000# 20/40 sand, 370,000 SCF N2,  
529 bbls foam.

3<sup>rd</sup> Stage: Riley ( 13 holes ) ( 4711.50' to 4727' ) 60 Quality Foam 750 gal 15% HCL.  
5,000# 80/100 sand, 30,000# 20/40 sand,  
426,000 SCF N2, 607 bbls foam.

4<sup>th</sup> Stage: Speechley ( 7 holes ) ( 3618' to 3661.75' ) 60 Quality Foam. 750 gal 15% HCL.  
Warren ( 6 holes ) ( 3541.50' to 3551.25' ) 5,000# 80/100 sand, 35,000# 20/40 sand,  
464,000 SCF N2, 634 bbls foam.

WELL LOG

KB-GL	0	10
Fill	10	12
Sand	12	20
Sand & Shale & Red Rock	20	140
Sand & Shale	140	263
Sand	263	317
Coal	317	322
Sand	322	361
Sand & Shale & Red Rock	361	400
Sand	400	466
Sand & Shale & Red Rock	466	562
Sand	562	600
Sand & Shale	600	1100
Red Rock	1100	1193
Sand & Shale	1193	2110
Little Lime	2110	2120
Big Lime	2120	2166
Keener	2166	2222
Shale	2222	2230
Big Injun	2230	2312
Sand & Shale	2312	2435
Weir	2435	2527
Shale	2527	2638
Berea	2638	2655
Shale	2655	2840
Gordon	2840	2896
Shale	2896	3510
Warren	3510	3562
Shale	3562	3575
Speechley	3575	3670
Siltstone & Shale	3670	4699
Riley	4699	4750
Shale	4750	5042
Third Riley	5042	5124
Shale	5124	5164
Benson	5164	5178
Shale	5178	5410
Alexander	5410	5507
Sand & Shale	5507	5590
T.D.	5590	

½" water @ 434'

**Gas Checks**

2013' – No Show  
2247' - Odor  
3455' - Odor  
4208' - Odor  
4680' - Odor  
5115 - Odor  
5367' - Odor